



EXISTING PHOTOS
N.T.S.

PLAN NOTES:

- ALTHOUGH EVERY EFFORT HAS BEEN MADE IN PREPARING THESE PLANS AND CHECKING THEM FOR ACCURACY, THE CONTRACTORS MUST REVIEW ALL DETAILS OF THEIR TRADES AND BE RESPONSIBLE FOR THE SAME.
- DO NOT SCALE DIMENSIONS FROM DRAWINGS, CONSULT THE ARCHITECT WITH ANY QUESTIONS.
- ALL INTERIOR WALLS ARE DIMENSIONED STUD-TO-STUD UNLESS NOTED OTHERWISE. (SEE WINDOW TYPES FOR ACTUAL DIMENSIONS)
- PLACEMENT OF BUILDING COMPONENTS, MECHANICAL EQUIP. APPLIANCES AND ELECTRICAL COMPONENTS IS SUBJECT TO FIELD ADJUSTMENT. ACTUAL CONSTRUCTION MAY NOT CONFORM EXACTLY TO THE LOCATIONS INDICATED ON THESE DRAWINGS

GENERAL NOTES:

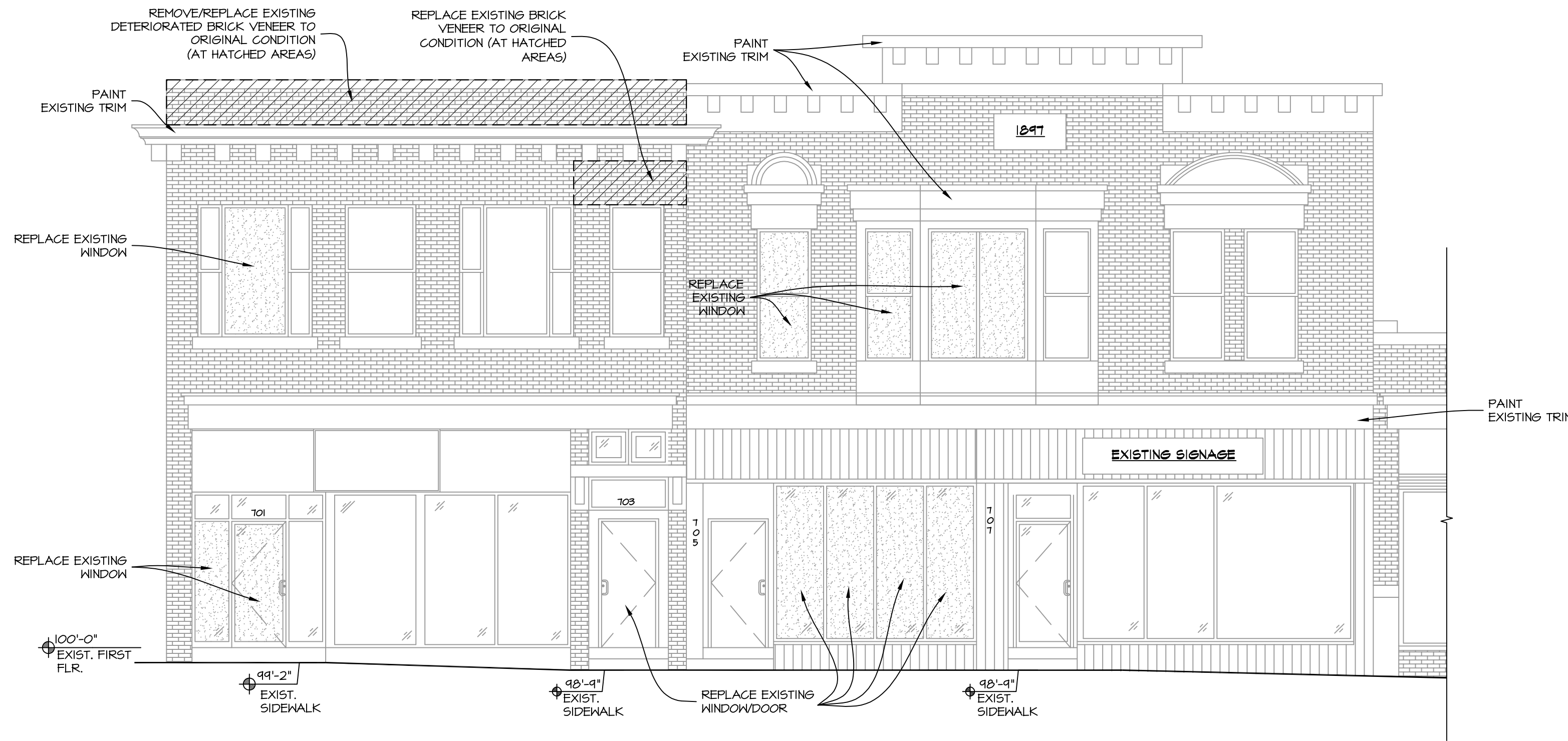
- THE DESIGNER MAINTAINS NO RESPONSIBILITY FOR THE GENERAL CONTRACTOR, SUBCONTRACTORS, OR THOSE WORKING IN SUCH CAPACITIES, FOR THE METHODS USED, OR LACK THEREOF, IN THE EXECUTION OF THE WORK AND SAFETY PROCEDURES AND PRECAUTIONS TAKEN AT THE PROJECT SITE.
- CONTRACTORS SHALL ASSUME FULL RESPONSIBILITY - UNRELIEVED BY REVIEW OF SHOP DRAWINGS NOR BY SUPERVISION OR PERIODIC OBSERVATION OF CONSTRUCTION FOR COMPLIANCE WITH THE CONTRACT DOCUMENTS - FOR DIMENSIONS TO BE CONFIRMED AND CORRELATED ON THE JOB SITE AND BETWEEN INDIVIDUAL DRAWINGS OR SETS OF DRAWINGS, FOR FABRICATION PROCESSES AND CONSTRUCTION TECHNIQUES (INCLUDING EXCAVATION, SHORING AND SCAFFOLDING, BRACING, ERECTION, FORM WORK, ETC.), FOR COORDINATION OF THE VARIOUS TRADES, FOR SAFE CONDITIONS ON THE JOB SITE, AND FOR THE PROTECTION OF THE PEOPLE AND PROPERTY AT THE JOB SITE.
- THE INFORMATION CONTAINED ON THE DRAWINGS IS IN ITSELF INCOMPLETE, AND VOID UNLESS USED IN CONJUNCTION WITH ALL THE SPECIFICATIONS, TRADE PRACTICES, OR APPLICABLE STANDARDS, CODES, ETC., INCORPORATED THEREIN BY REFERENCE, OF WHICH THE CONTRACTOR CERTIFIES KNOWLEDGE BY SIGNING THE CONTRACT.
- UNLESS NOTED OTHERWISE, ALL DETAILS, SECTIONS, AND NOTES ON THE DRAWINGS ARE INTENDED TO BE TYPICAL FOR SIMILAR SITUATIONS ELSEWHERE.
- UNLESS OTHERWISE SHOWN OR NOTED, THE GENERAL CONTRACTOR SHALL BE RESPONSIBLE FOR COORDINATING THE LOCATION AND THE PLACEMENT OF ANY INSERTS, HANGARS, PIPE SLEEVES, HOLES OR ANCHOR BOLTS THAT ARE REQUIRED BY THE MECHANICAL OR ELECTRICAL EQUIPMENT.
- THE CONTRACTOR SHALL COMPLY WITH THE LATEST OCCUPATIONAL SAFETY HEALTH ACT REQUIREMENTS.
- ALL STATE OF WISCONSIN, LOCAL AND O.S.H.A. SAFETY CODES SHALL BE A PART OF THESE PLANS, AND IT SHALL BE THE RESPONSIBILITY OF THE GENERAL CONTRACTOR TO SEE THAT ALL PARTIES THAT WORK AT OR VISIT THE JOB SITE COMPLY WITH SAME.

REVISIONS:
 6/4/21: CD'S ISSUED

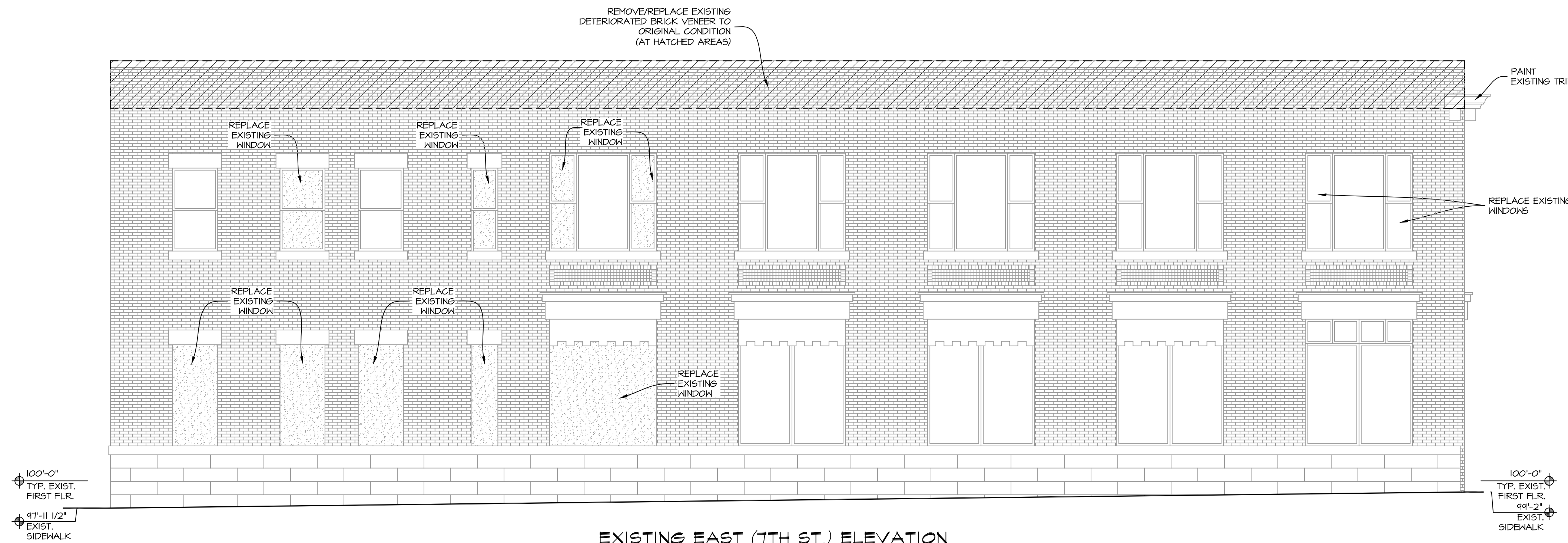
CONTRACTOR TO FIELD VERIFY ALL DIMENSIONS AND THE EXACT LOCATION OF EXISTING PLUMBING, MECHANICAL, AND STRUCTURAL COMPONENTS AND NOTIFY THE ARCHITECT IN WRITING OF ANY DISCREPANCIES.

SCOPE OF DRAWING:

THESE DRAWINGS INDICATE THE GENERAL SCOPE OF THE PROJECT IN TERMS OF ARCHITECTURAL DESIGN INTENT, THE DIMENSIONS OF THE BUILDING, THE MAJOR ARCHITECTURAL ELEMENTS AND THE TYPE OF STRUCTURAL, MECHANICAL AND ELECTRICAL SYSTEMS. THE DRAWINGS DO NOT NECESSARILY INDICATE OR DESCRIBE ALL WORK REQUIRED FOR FULL PERFORMANCE AND COMPLETION OF THE REQUIREMENTS OF THE CONTRACT. ON THE BASIS OF GENERAL SCOPE INDICATED OR DESCRIBED, THE TRADE CONTRACTORS SHALL FURNISH ALL ITEMS REQUIRED FOR THE PROPER EXECUTION AND COMPLETION OF THE WORK INTENDED.



EXISTING NORTH (MITCHELL ST.) ELEVATION
 3/16" = 1'-0"



EXISTING EAST (7TH ST.) ELEVATION
 3/16" = 1'-0"

MITCHELL STREET REMODEL

701-707 W MITCHELL ST
 MILWAUKEE, WI

SHEET TITLE:
 EXISTING ELEVATIONS, EXISTING PHOTOS, & GENERAL NOTES

A-1

DATE: JUNE 4TH, 2021

PROJECT NUMBER: 19-104.4