

BHD KPI Report Q1 2021

**Children's Community Mental Health
Services and Wraparound Milwaukee**

Report Overview



**Unique Families
Served**
2,086

Children's Community Mental Health Services and Wraparound Milwaukee is a unique system of care for children with serious emotional, behavioral, and mental health needs and their families.

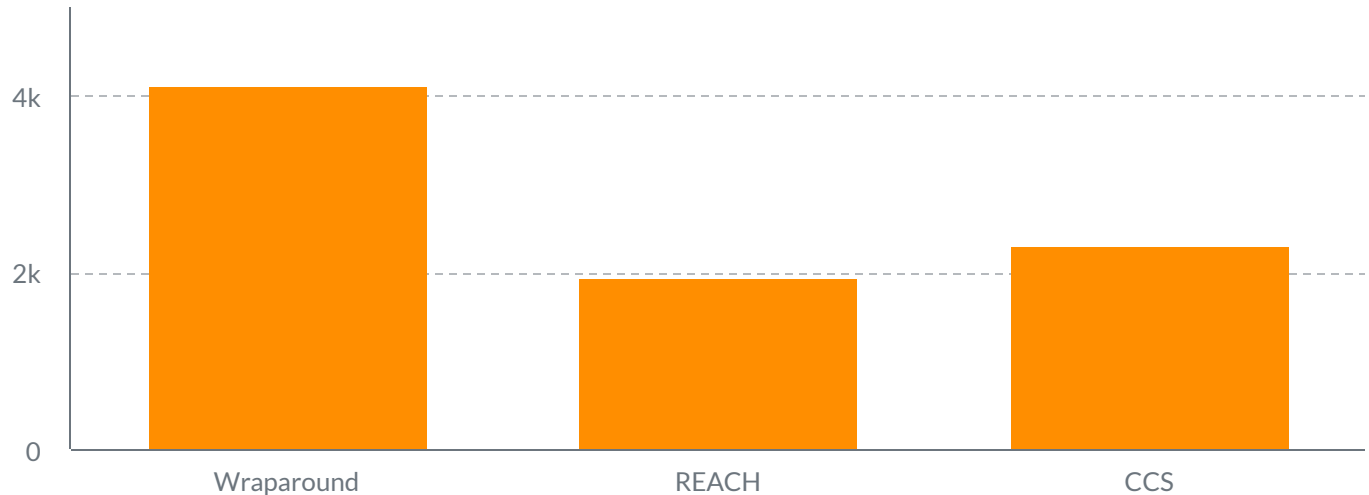
This report seeks to present information about quality care, costs, and outcomes framed by Wraparound values and DHHS values.

Average Cost of Care - average cost of care per family per month by program in the past quarter

Population Health Metrics - social support, home placement stability, and out-of-home recidivism

Outcomes - overall satisfactions, functionality, permanency at discharge, natural supports, and how well youth/caregiver is doing at discharge

Average Cost Per Family



Wraparound
\$4,117

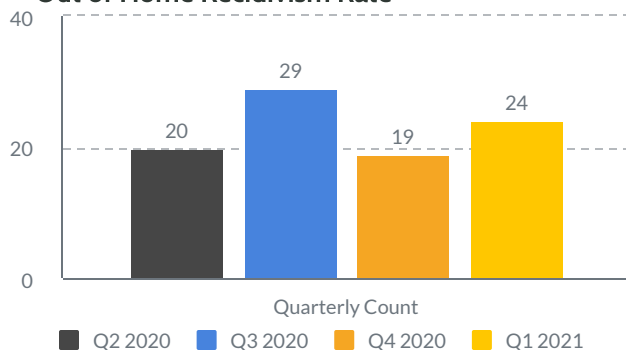
REACH
\$1,935

CCS
\$2,318

Average costs are based on the services utilized per family per month in the past quarter in Wraparound, REACH, and CCS.

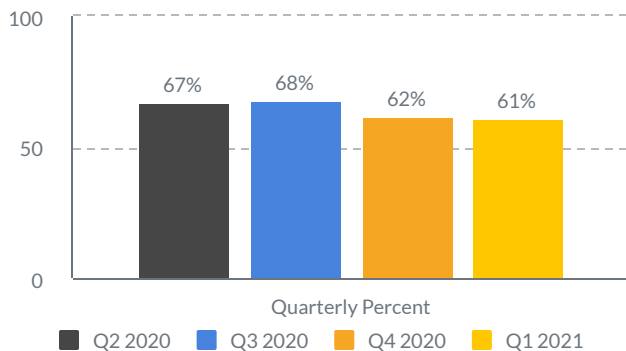
Population Health

Out of Home Recidivism Rate



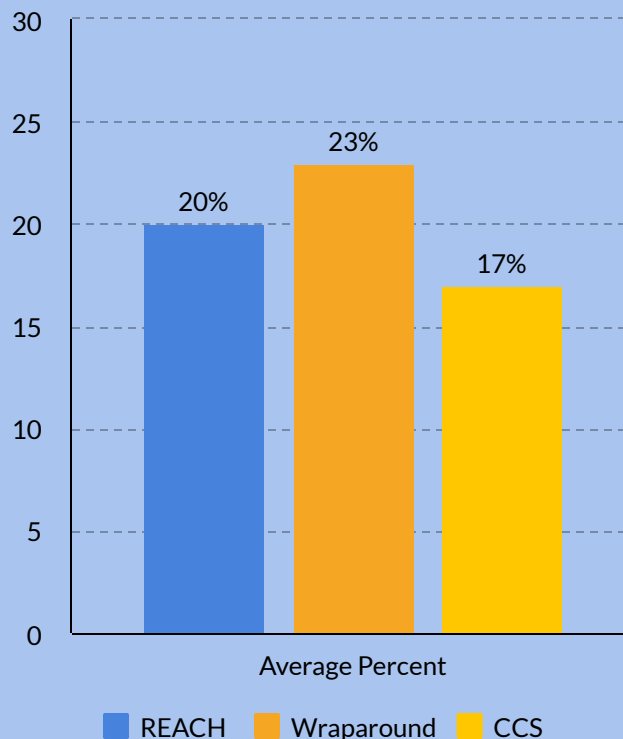
Number of youth in Wraparound and REACH who moved from a home-type setting to an out of home type setting within each quarter displayed.

Legal Permanency Stability Rate



Percent of Wraparound youth in a home-type setting in the past four quarters.

Percent of Natural Supports

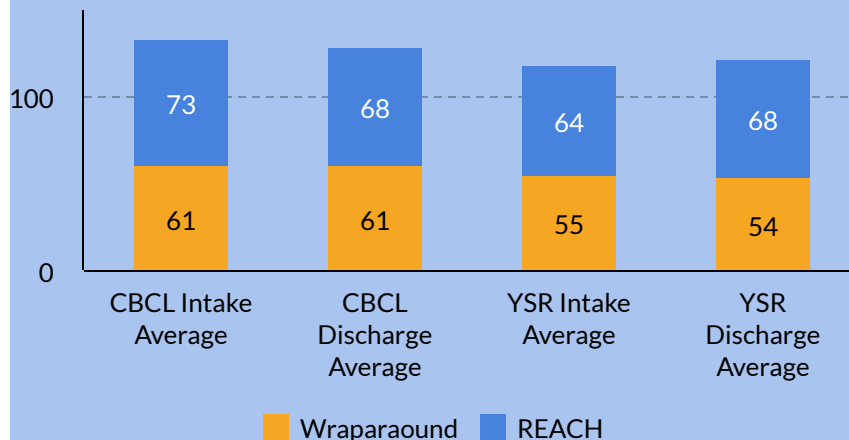


Average percent of natural supports on teams in the past quarter.

Outcomes



Functionality



Average functionality scores of youth and their caregivers discharged in the past quarter. Data accounts for intake score averages and the last scores recorded among youth discharged from Wraparound and REACH in the past quarter. Please note that decreased scores upon discharge is good!



Permanency at Discharge

80.67%

Percent of discharged youth placed in a home-type setting. Includes Wraparound, REACH, and CCS in the past quarter.



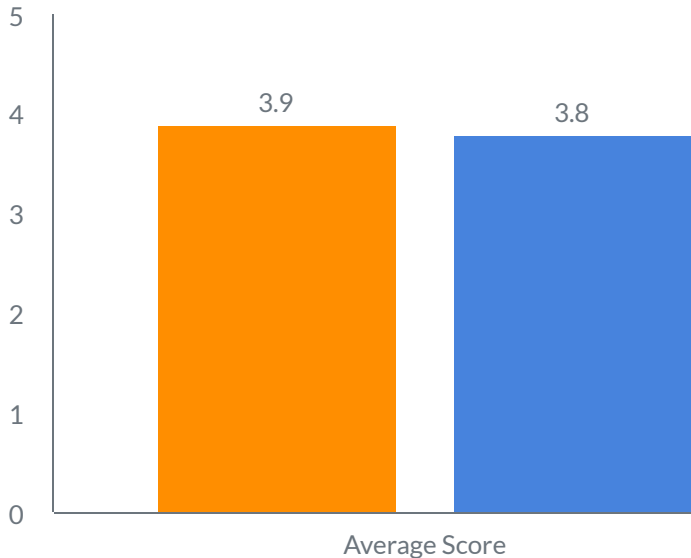
Family Satisfaction
Overall Average
Score

4.8

For Wraparound and REACH families in the past quarter

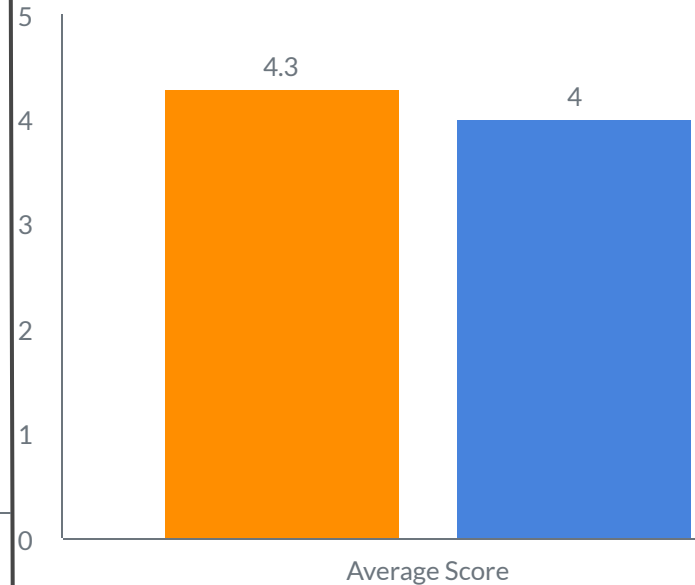
Wraparound and REACH Perceived Outcomes

Youth Perceptions



Getting along with friends and family
How well youth is doing

Caregiver Perceptions



Natural Supports How Well Family is Doing

*Scores are from voluntary dis-enrollment surveys given to caregivers and youth in Wraparound and REACH programs in the past quarter. These categories can be found on the annual CCS survey: MHSIP.

Wraparound Discharges

52

REACH Discharges

70

CCS Discharges

48