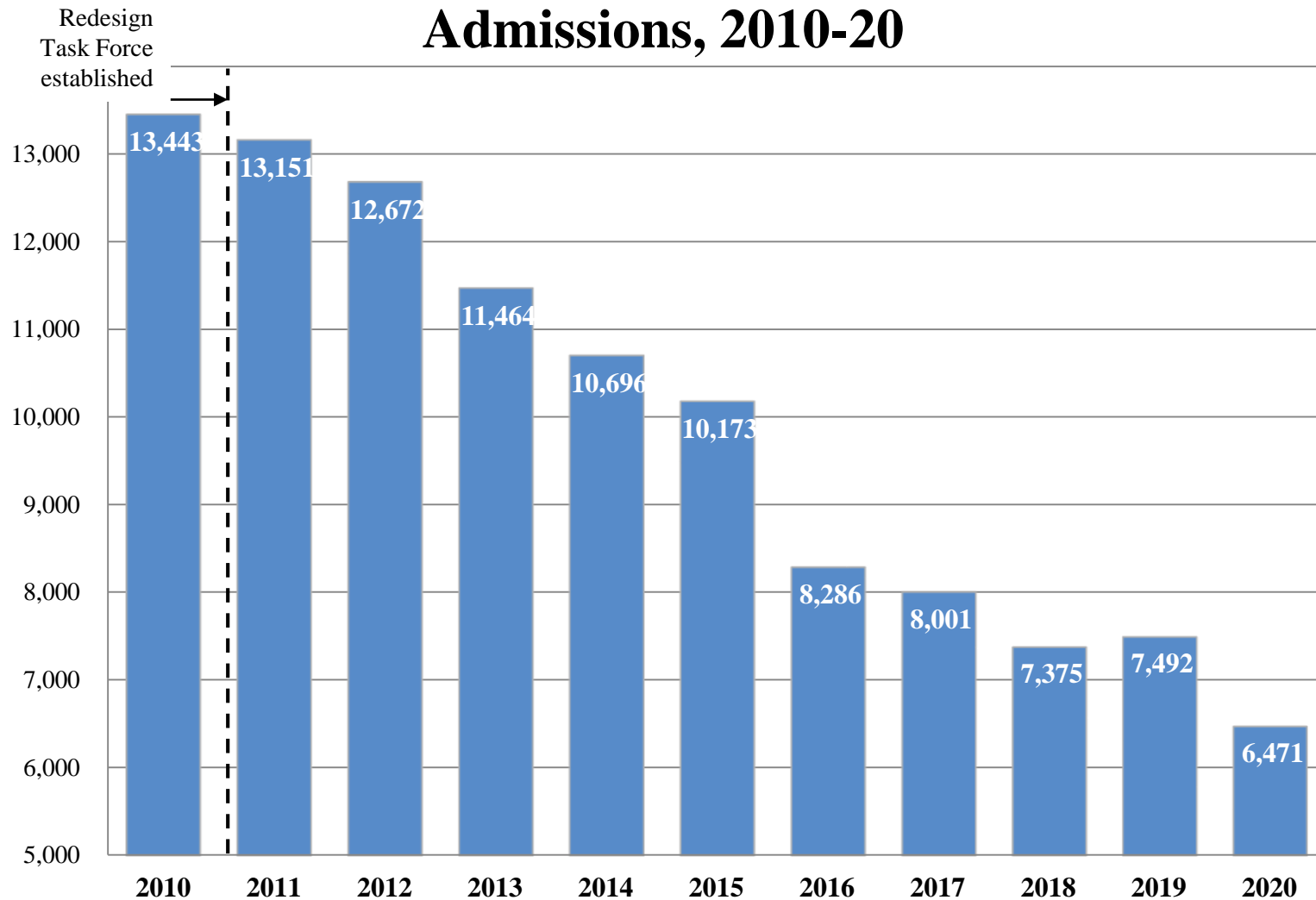


# Data Dashboard

## Milwaukee County Behavioral Health Division

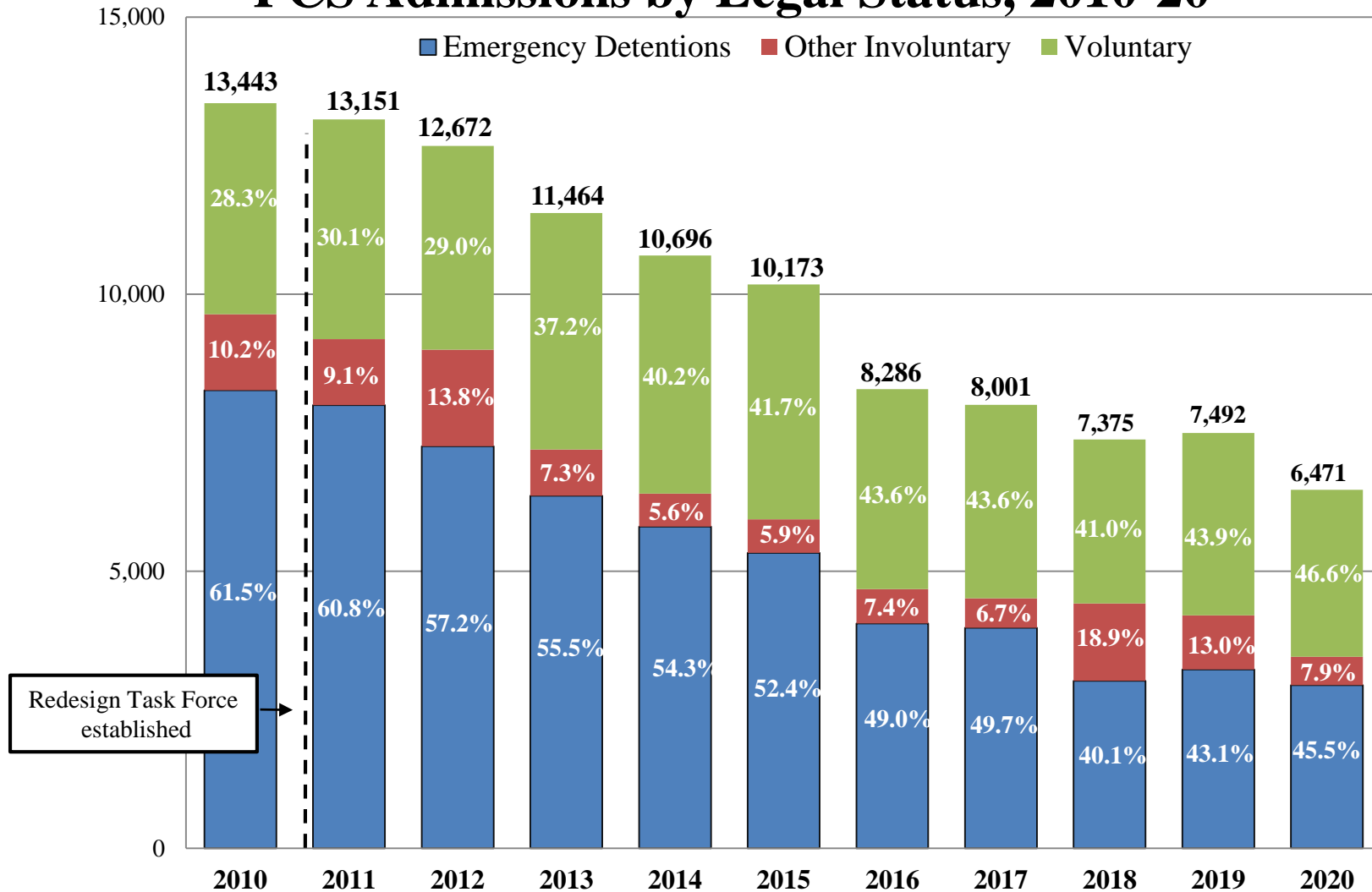
Revised January 28, 2021

# Psychiatric Crisis Service (PCS) Admissions, 2010-20



**PCS:** Psychiatric Crisis Service (Behavioral Health Division emergency department)

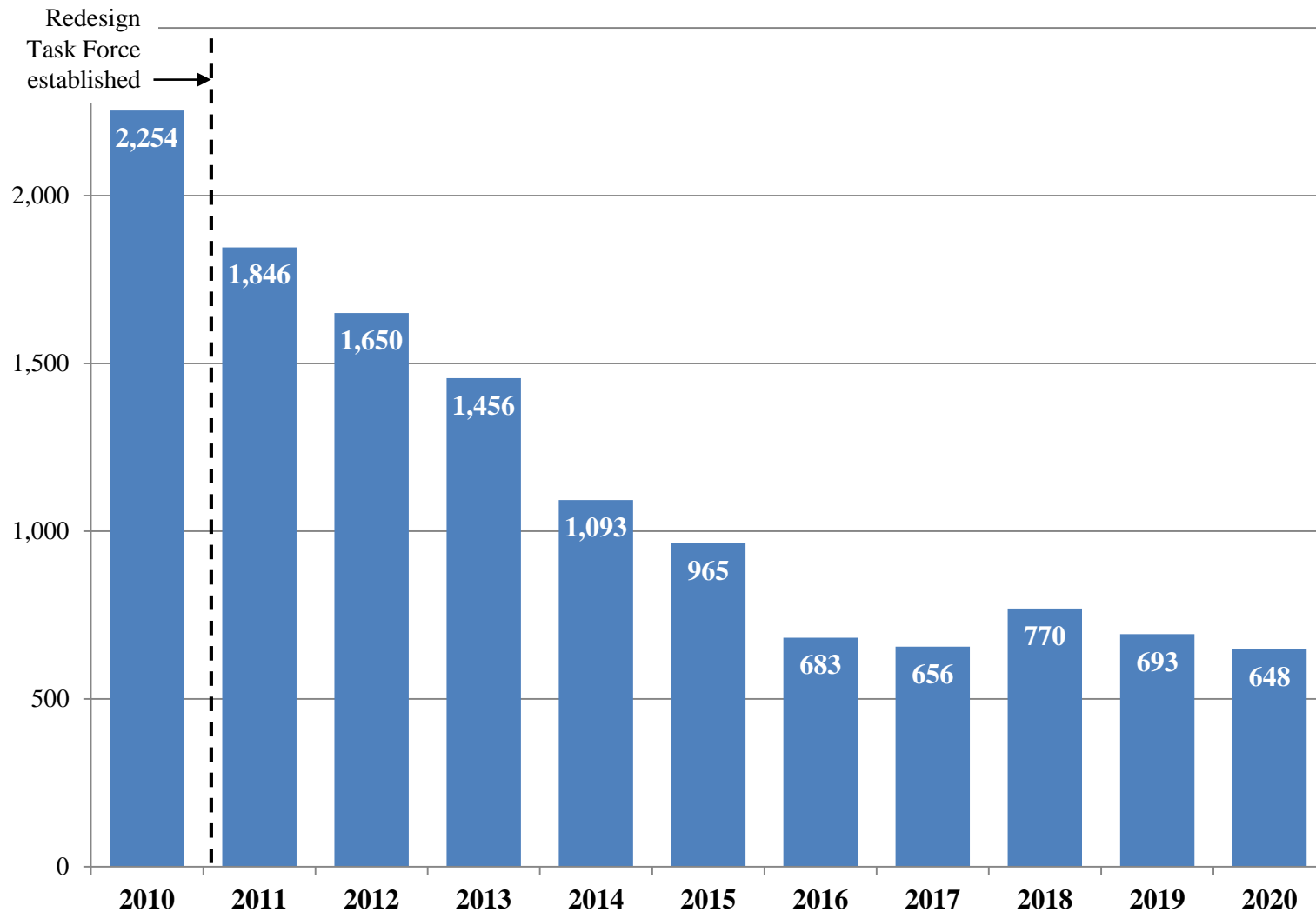
# PCS Admissions by Legal Status, 2010-20



**PCS:** Psychiatric Crisis Service (Behavioral Health Division emergency department)

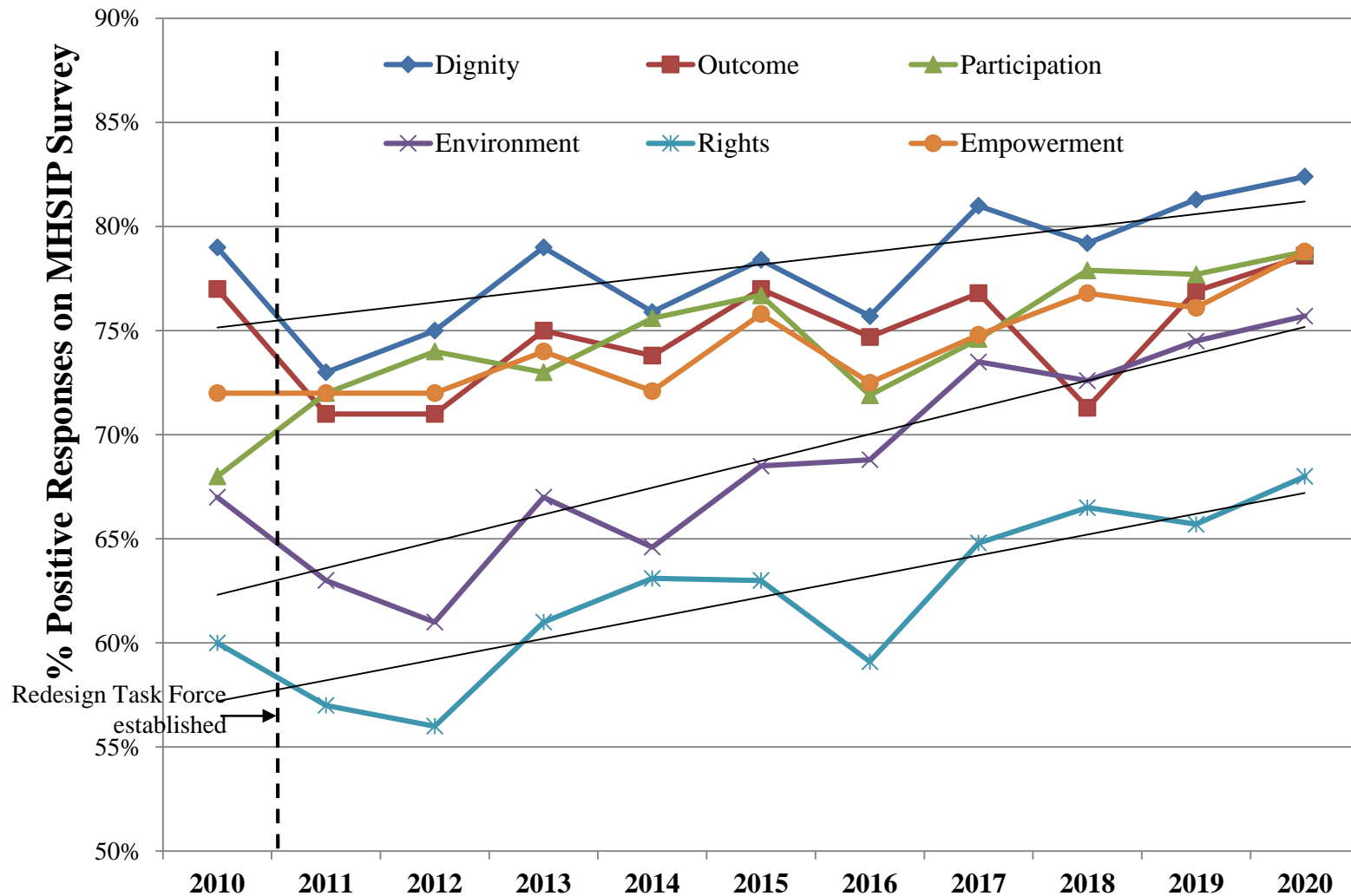
**Other Involuntary:** Three-Party Petition, Treatment Director Affidavit, Treatment Director Supplement, Re-Detention from Conditional Release, Re-Detention / Not Follow Stipulations

# BHD Adult Inpatient Admissions, 2010-20



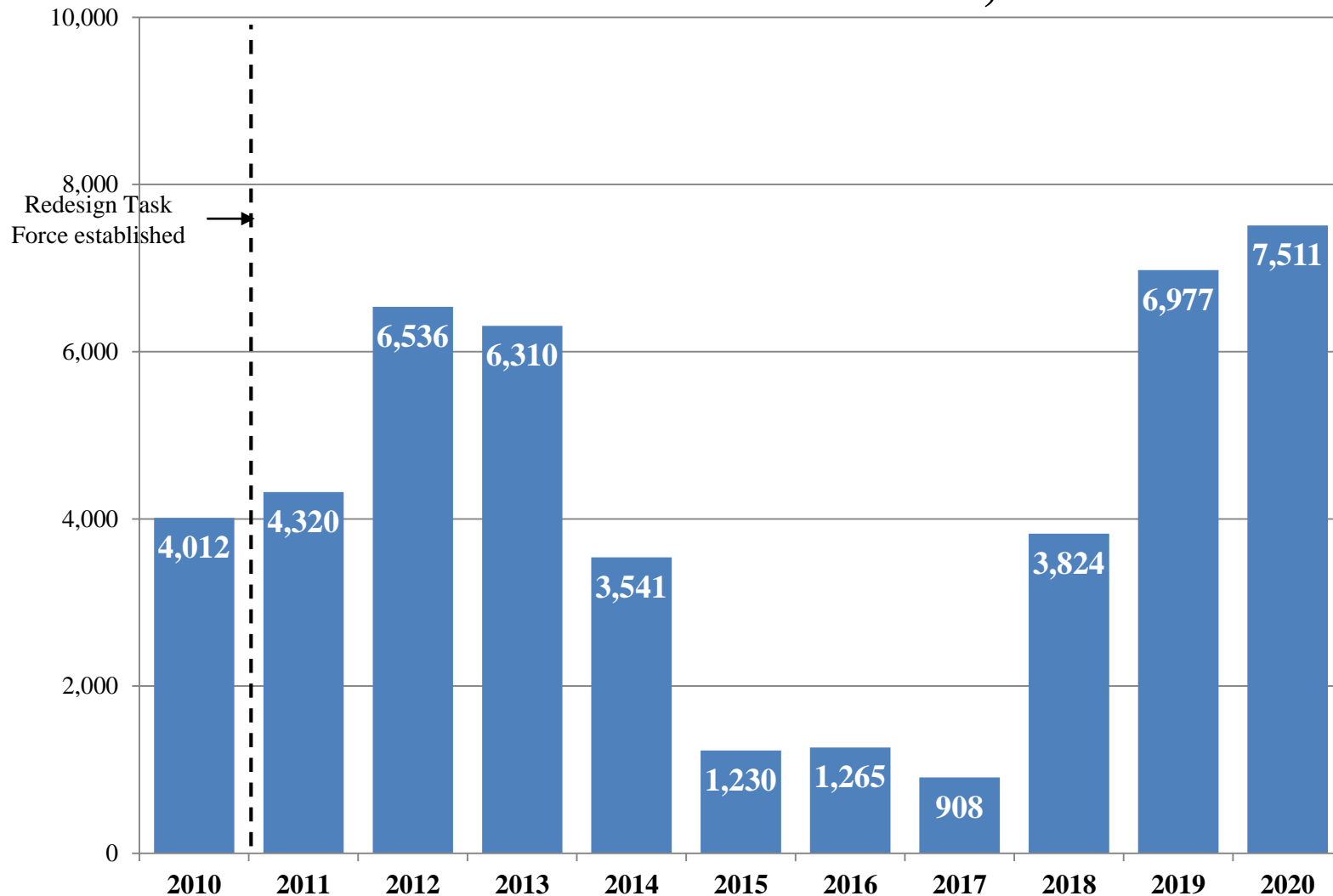
Capacity on BHD inpatient units (Adult & Child/Adolescent) was 108 from 2008-11. Staffed capacity was reduced to 91 in 2012, 78 in 2013, and 64 in 2014. There are three adult units (16, 18, and 18 beds) and one Child/Adolescent unit (12 beds).

# BHD Adult Inpatient – Satisfaction, 2010-20



Issues addressed by domain: **Dignity** – respect, recovery-oriented staff; **Outcome** – crisis planning, reduced symptoms, social improvement; **Participation** – engaging community provider(s), involved in discharge planning; **Environment** – atmosphere, privacy, safety, comfort; **Rights** – grievances addressed, safety refusing treatment; **Empowerment** – choice, helpful contact

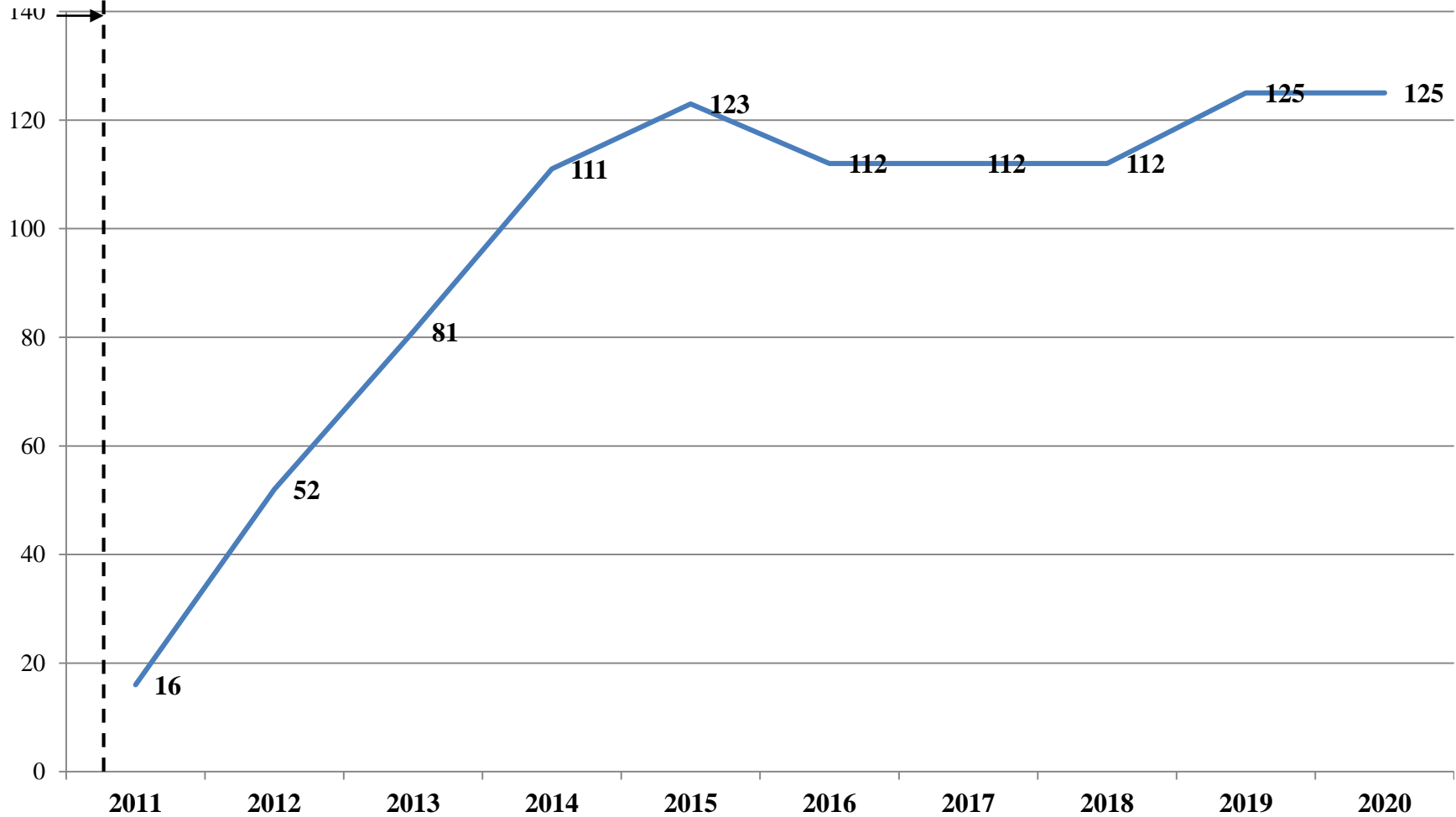
# BHD Access Clinic Client Sessions, 2010-20



The **Access Clinic** is a walk-in center (located at the Milwaukee County Mental Health Complex) providing mental health assessment and referral for individuals without insurance.

# Certified Peer Specialists in Milwaukee County, 2011-20

Redesign  
Task Force  
established



Capacity on BHD inpatient units (Adult & Child/Adolescent) was 108 from 2008-11. Staffed capacity was reduced to 91 in 2012, 78 in 2013, and 64 in 2014. There are three adult units (16, 18, and 18 beds) and one Child/Adolescent unit (12 beds).

## **2020 Client Experience Survey Results**

**4.16**

**Average**

**(out of a possible 5; average  
of the 4 core questions)**

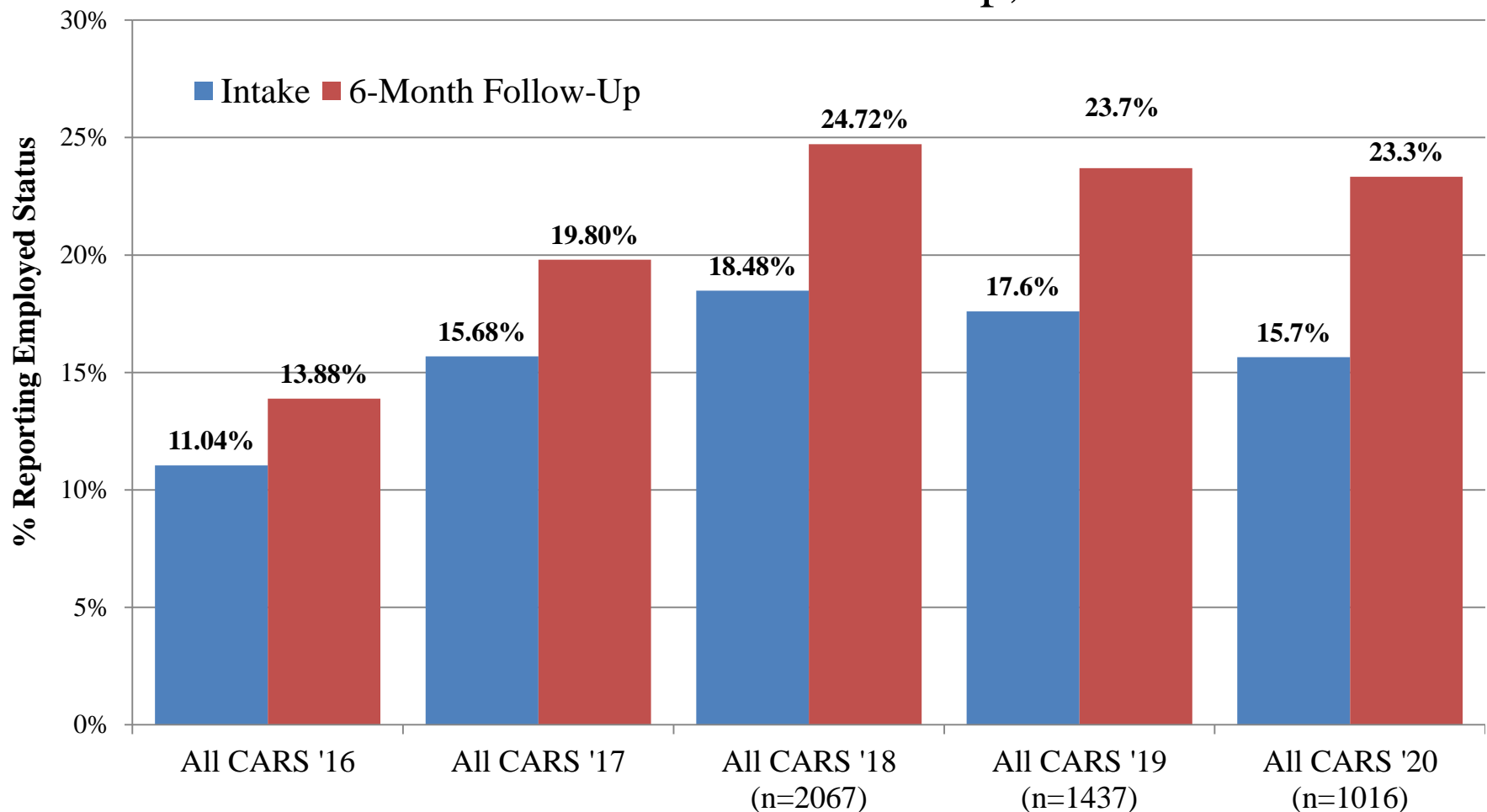
**n=815**

**clients**

**(includes clients in Crisis  
Care Management,  
Community Support  
Program, Detoxification, and  
Recovery Support  
Coordination)**



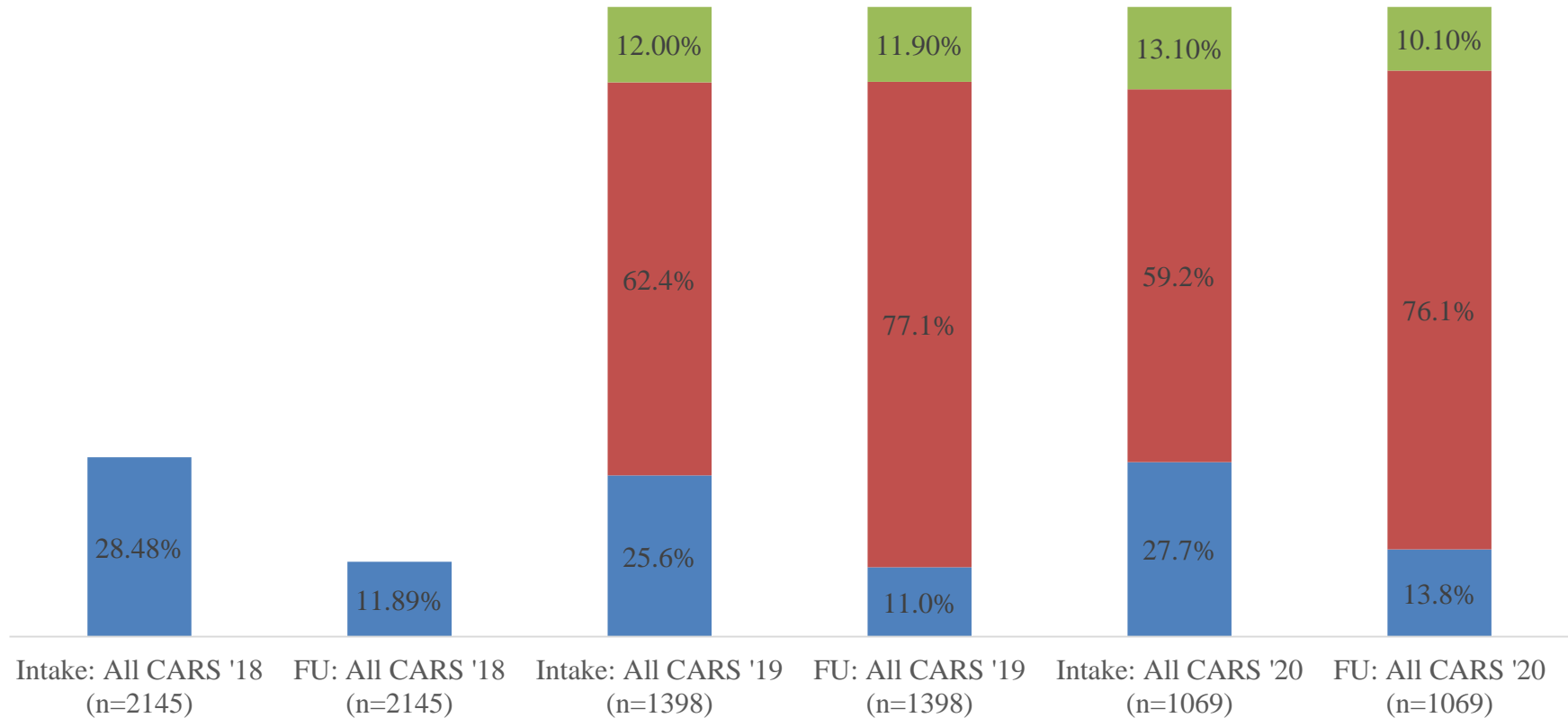
## Community Services – Employment Intake & 6-Month Follow-Up, 2016-20



**Employed Status in 2016 and 2017** includes full and part time employment and student status. **Employed Status for 2018-2020** includes full time, part time, supported competitive, student status, sheltered workshop, and homemaker employment. Please note that the average length of time between a CARS intake assessment and follow up could range from 120-210 days, which is a slight change from the way the data was extracted in 2018 (which included individuals who had a follow up assessment anywhere from 30-210 days post intake assessment) and led to a smaller sample size.

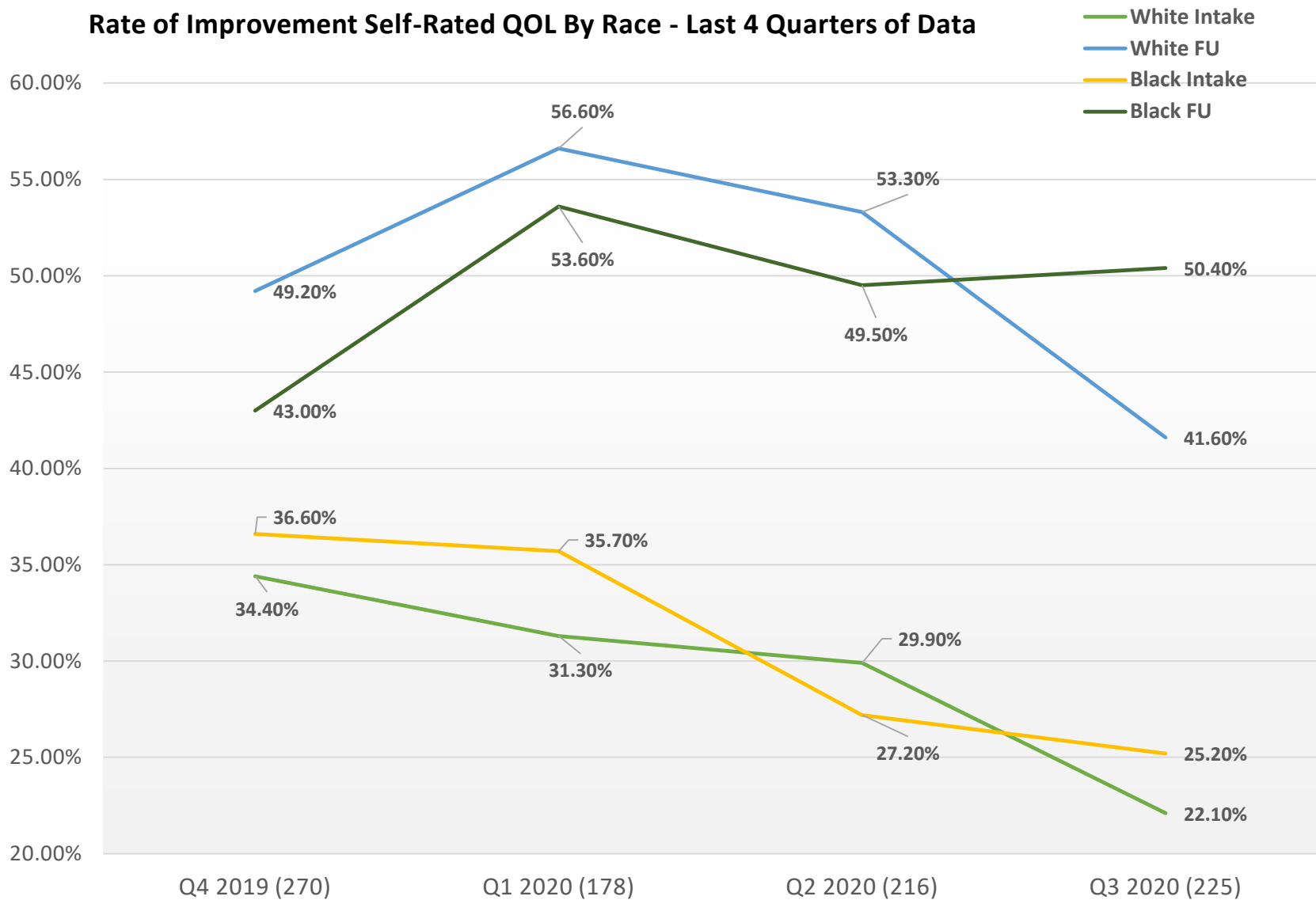
## Community Services – Housing Status Intake & 6-Month Follow-Up, 2018-2020

■ Homeless ■ Stable Housing ■ Other



**Homelessness Status in 2018 to 2020** includes clients who self-reported that their living arrangement was “street, shelter, no fixed address, homeless” at intake and follow up. **Stable Housing** was defined as those who had “permanent housing” or “supported housing”. Please note that the average length of time between a CARS intake assessment and follow up could range from 120-210 days. As above, the data was drawn from a smaller sample because of the observation time frame.

**Rate of Improvement Self-Rated QOL By Race - Last 4 Quarters of Data**



**Rate of Change in QOL By Race - Last 4 Quarters**

