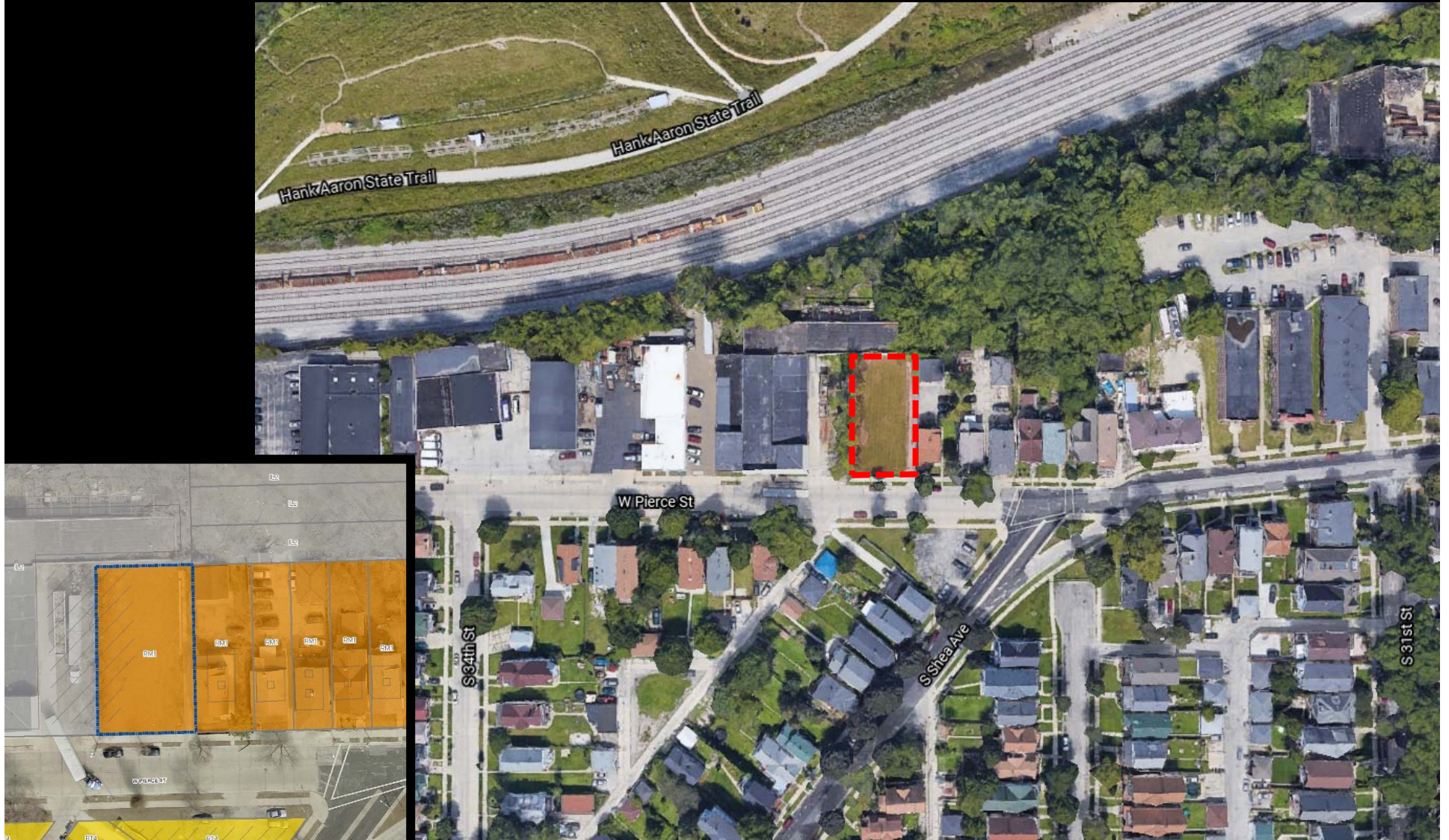


File No. 210166. A substitute ordinance relating to the change in zoning from Multi Family Residential, RM1, to Industrial Light, IL2, for the property located at 3220 West Pierce Street, on the north side of West Pierce Street, east of South 34th Street, in the 8th Aldermanic District.





File No. 210166. Site Context Photos.



View from West Pierce looking north-east



View from West Pierce looking north



View from West Pierce looking west



File No. 210166. Consistency with Area Plan.



## Near South Side Plan

- Adopted in 2009.
- The Industrial Policies and Strategies seek to support existing industrial uses that provide jobs for Near South Side workforce.
- Located within the Pierce Area Redevelopment subarea which aims to continue to *"[i]ncorporate a mixture of uses in a cohesive fashion that includes residential, commercial, open space and business uses."*
- Recommends landscape buffers between industrial buildings, parking lots, and adjacent land uses.
- **Proposed rezoning is not inconsistent with the Near South Side Area Plan.**