



City Place 2

MILWAUKEE, WISCONSIN MARCH 29, 2021



TABLE OF CONTENTS



CONTACT INFORMATION

Kalan Haywood
President
Haywood Group, LLC

PH 414.461.1568, ext. 106
EMAIL khaywood@haywood-group.com

VICINITY MAP + ARCHITECTURAL SITE PLAN	A001
SITE PHOTOS	A002
SITE SURVEY	A003
SITE DEMOLITION PLAN	C000
SITE LAYOUT PLAN	C101
SITE GEOMETRIC PLAN	C102
SITE GRADING PLAN	C103
SITE UTILITY PLAN	C104
SITE EROSION CONTROL PLAN	C105
EROSION CONTROL DETAILS	C201
SITE DETAILS	C202
SITE DETAILS	C203
SITE LANDSCAPE PLAN	L101
LANDSCAPE DETAILS	L201
ENLARGED LANDSCAPE PLAN	L202
FLOOR PLANS	A100
ENLARGED COURTYARD FLOOR PLAN	A101
BUILDING ELEVATIONS	A400
BUILDING ELEVATIONS	A401
WALK-UP UNIT ELEVATION	A402
PERSPECTIVE FROM WEST	A900
PERSPECTIVE FROM NORTHWEST	A901



VICINTY MAP



CITY PLACE 2

VICINITY MAPS + ARCHITECTURAL SITE PLAN
SCALE: 3/64" = 1'-0"

Engberg Anderson Project No. 203213.00



MILWAUKEE | MADISON | TUCSON | CHICAGO

A001



CITY PLACE 2

SITE PHOTOS
SCALE:

ALTA/NSPS
LAND TITLE SURVEY

CLIENT

Haywood Group, LLC

SITE ADDRESS

Vacant Lot at North 6th St. & W. Vine St., City of Milwaukee, Milwaukee County, Wisconsin.

LEGAL DESCRIPTION

Lot 1 of Certified Survey Map No. 8962, recorded October 10, 2017, as Document No. 10718712, being a part of Lots 7, 8, 9 and 10 and the public alley adjacent to said Lots in Block N of Joseph W. Haskin's Subdivision, all of Lots 1, 2, 3, 4 and 5 of Block 41 of Sherman' Addition and part of Lots 1, 4 and 5 in Block 7 of Plat of the Town of Milwaukee on the West Side of the River, all in the Southeast 1/4 of the Northwest 1/4, the Southwest 1/4 of the Northeast 1/4, and the Northwest 1/4 of the Southeast 1/4 in Section 20, in Township 7 North, Range 22 East, in the City of Milwaukee, County of Milwaukee, State of Wisconsin.

BASIS OF BEARINGS

Bearings are referenced to the Wisconsin State Plane Coordinate System, in which the West line of the NE 1/4, Sec. 20 bears N00°32'39"W.

VERTICAL DATUM

Vertical datum is based on City of Milwaukee Vertical Datum which is NGVD 1929 - 580.603.

LAND AREA

The Land Area of the subject property is 18,152 square feet or 0.4167 acres.

NOTE:

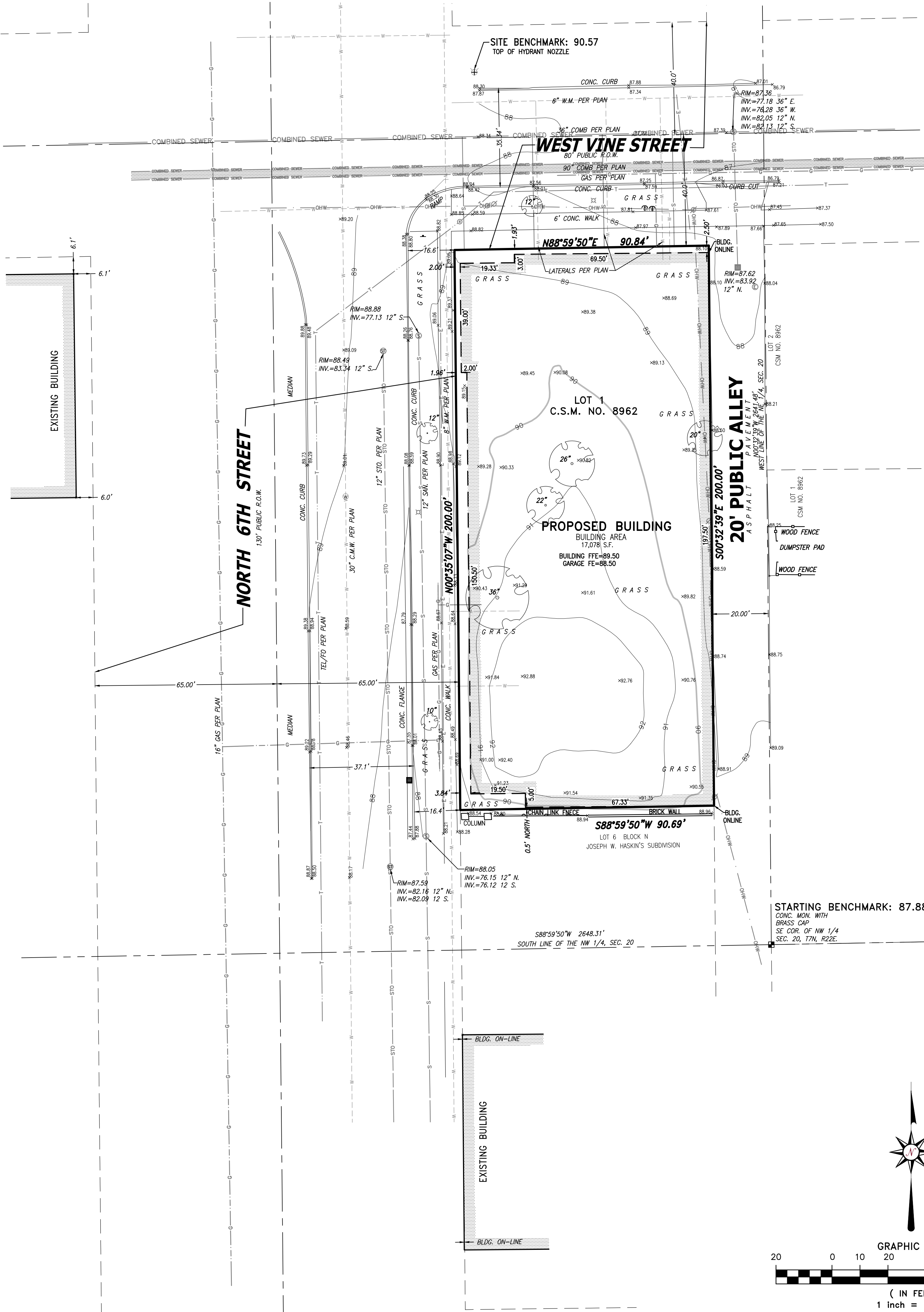
- Utility lines are shown from visible surface evidence, municipal plans and from plans and markings provided by Diggers Hotline, the One-call Utility Marking System (Wisconsin Statute 182.0175), Ticket Number 20210306418, 20210306416 & 20210306420.
- Site was snow covered at time of survey.

LEGEND

- INDICATES FOUND 1" IRON PIPE
- INDICATES SET 1" IRON PIPE
- + INDICATES FOUND CHISELED CROSS
- ⊙ SANITARY MANHOLE
- ⊕ SANITARY CLEANOUT OR VENT
- ⊙ SEPTIC TANK ACCESS COVER
- ⊙ M.I.S. MANHOLE
- ⊙ UNKNOWN MANHOLE
- ⊙ STORM MANHOLE
- ⊙ INLET (ROUND)
- ⊙ INLET (SQUARE)
- ⊙ CURB INLET
- ⊙ STORM SEWER END SECTION
- ⊙ GAS VALVE
- ⊙ GAS METER
- ⊙ WATER VALVE
- ⊙ HYDRANT
- ⊙ WATER MANHOLE
- ⊙ WATER SERVICE CURB STOP
- ⊙ WELL HEAD
- ⊙ STAND PIPE

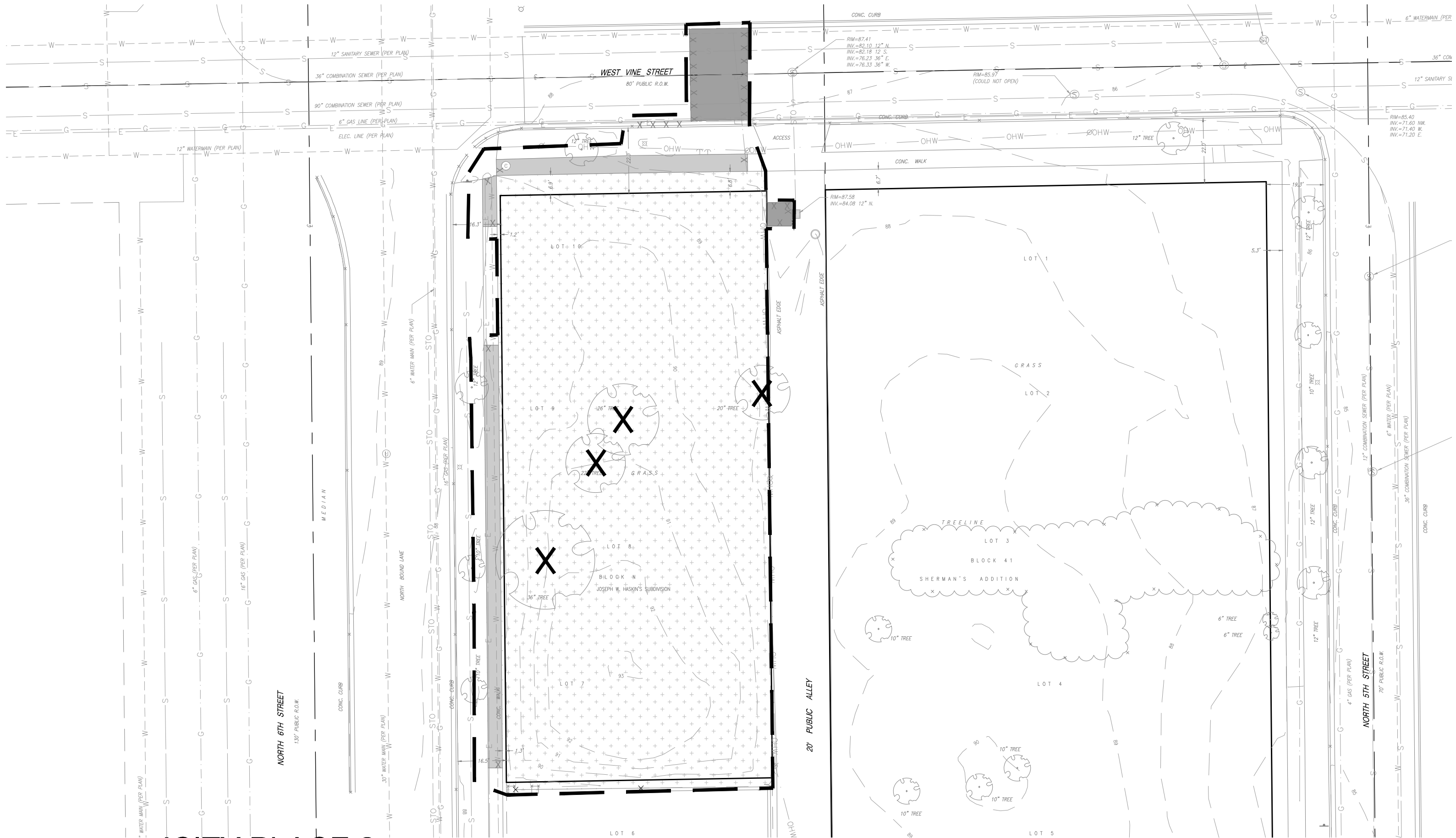
- ⊙ WALL INDICATOR VALVE
- ⊙ POST INDICATOR VALVE
- ⊙ LIGHT POLE
- ⊙ SPOT/YARD LIGHT
- ⊙ UTILITY POLE
- ⊙ GUY POLE
- ⊙ GUY WIRE
- ⊙ ELECTRIC MANHOLE
- ⊙ ELECTRIC PEDESTAL
- ⊙ ELECTRIC METER
- ⊙ TELEPHONE MANHOLE
- ⊙ TELEPHONE PEDESTAL
- ⊙ CABLE PEDESTAL
- ⊙ CONTROL BOX
- ⊙ FIBER OPTIC PEDESTAL/SIGN
- ⊙ TRAFFIC LIGHT
- ⊙ COMMUNICATION MANHOLE
- ⊙ BOLLARD
- ⊙ SOIL BORING/MONITORING WELL
- ⊙ WATER SURFACE
- ⊙ WETLANDS FLAG

- ▲ MARSH
- ⚑ FLAGPOLE
- ⊙ PARKING METER SIGN
- ⊙ MAILBOX
- ⊙ RAILROAD CROSSING SIGNAL
- ⊙ HANDICAP SPACE
- ⊙ CONIFEROUS TREE
- ⊙ DECIDUOUS TREE
- STO — SANITARY SEWER
- W — STORM SEWER
- W — WATERLINE
- G — MARKED GAS MAIN
- E — MARKED ELECTRIC
- OHW — OVERHEAD WIRES
- T — MARKED TELEPHONE
- TV — MARKED CABLE TV LINE
- FO — MARKED FIBER OPTIC
- B — BURIED ELECTRIC SERVICE
- — BOARD FENCE
- — CHAIN LINK FENCE
- — WIRE FENCE

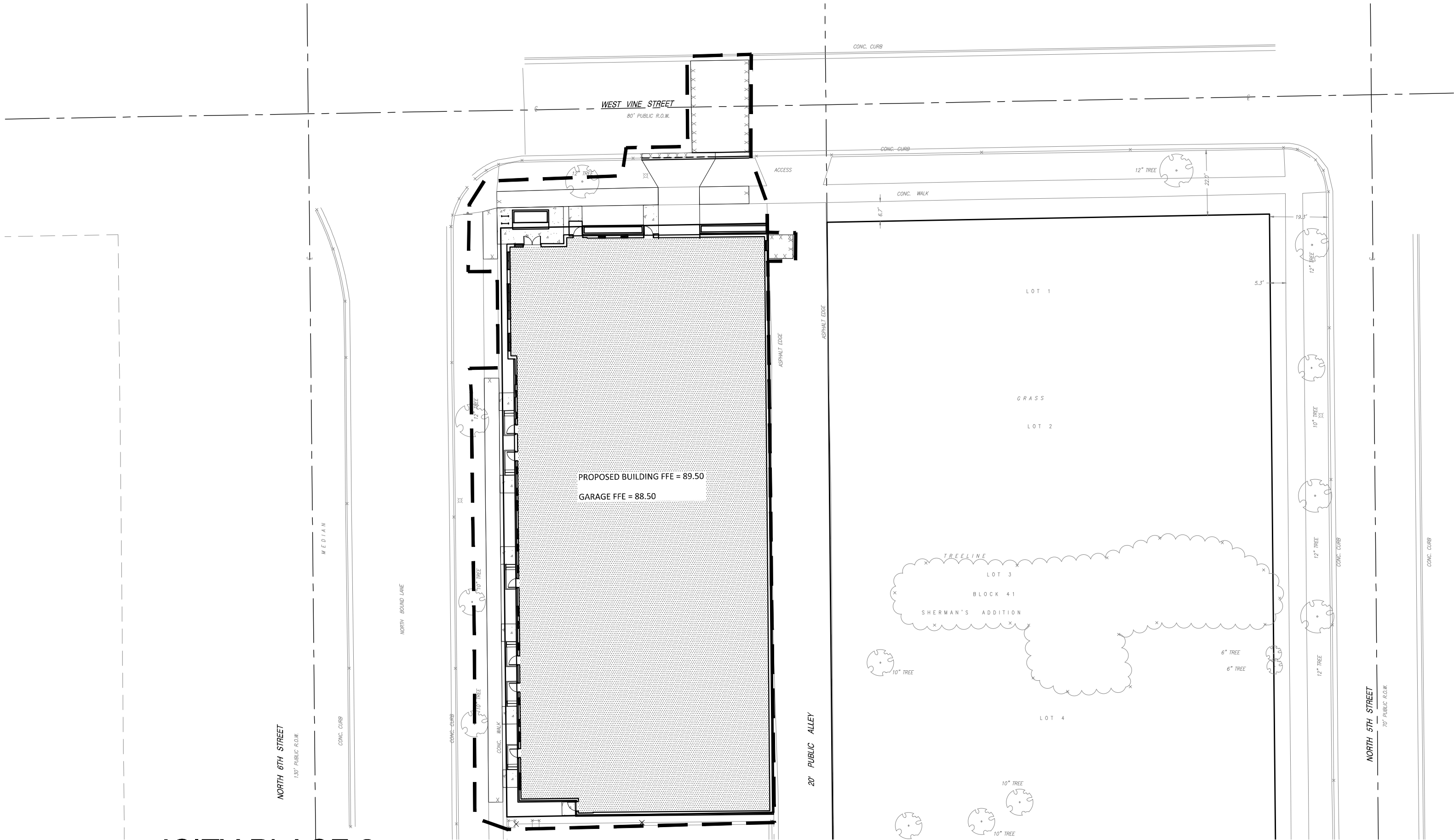


VICINITY MAP





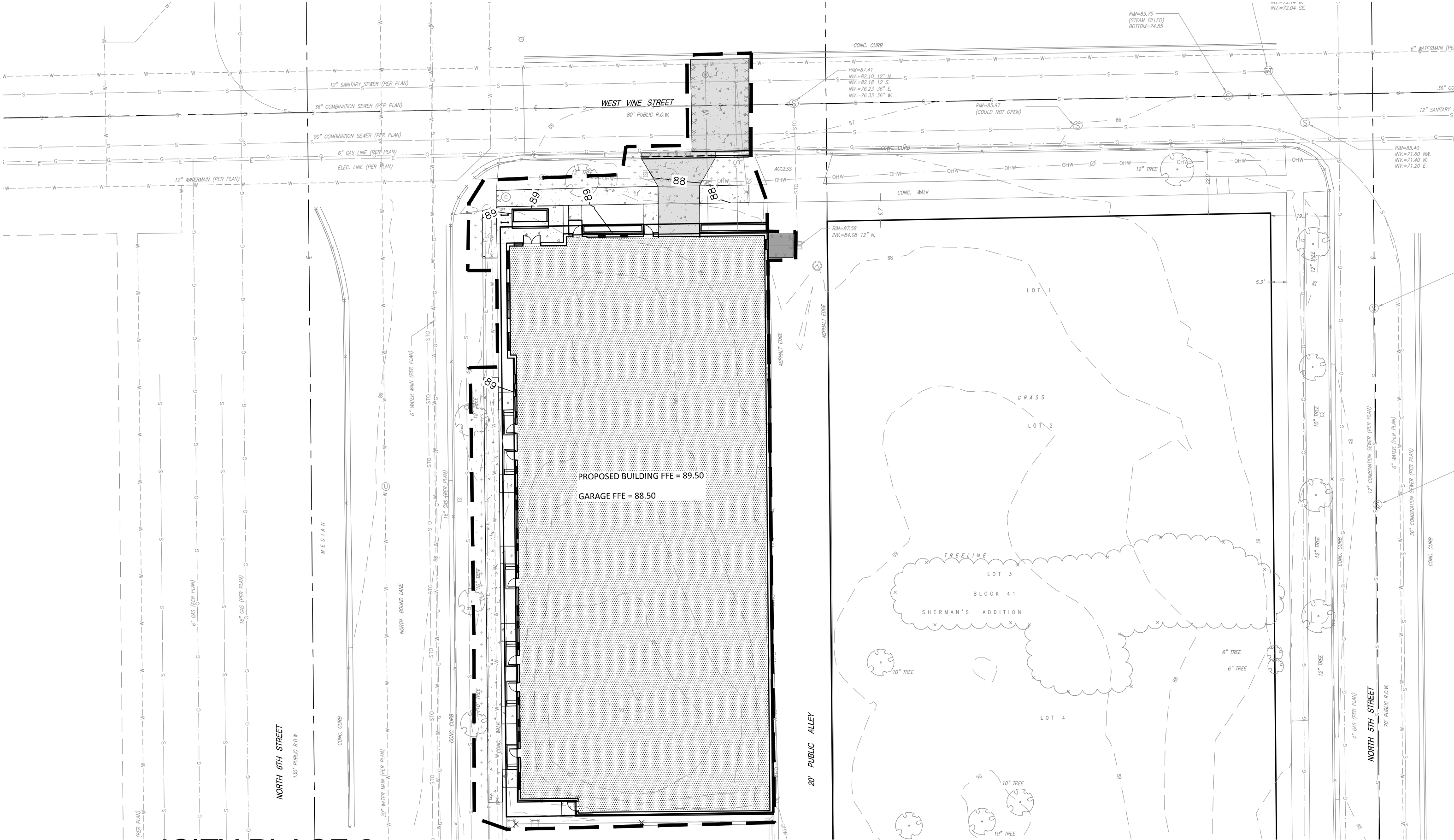




CITY PLACE 2

SITE GEOMETRIC PLAN
SCALE: 1" = 30'

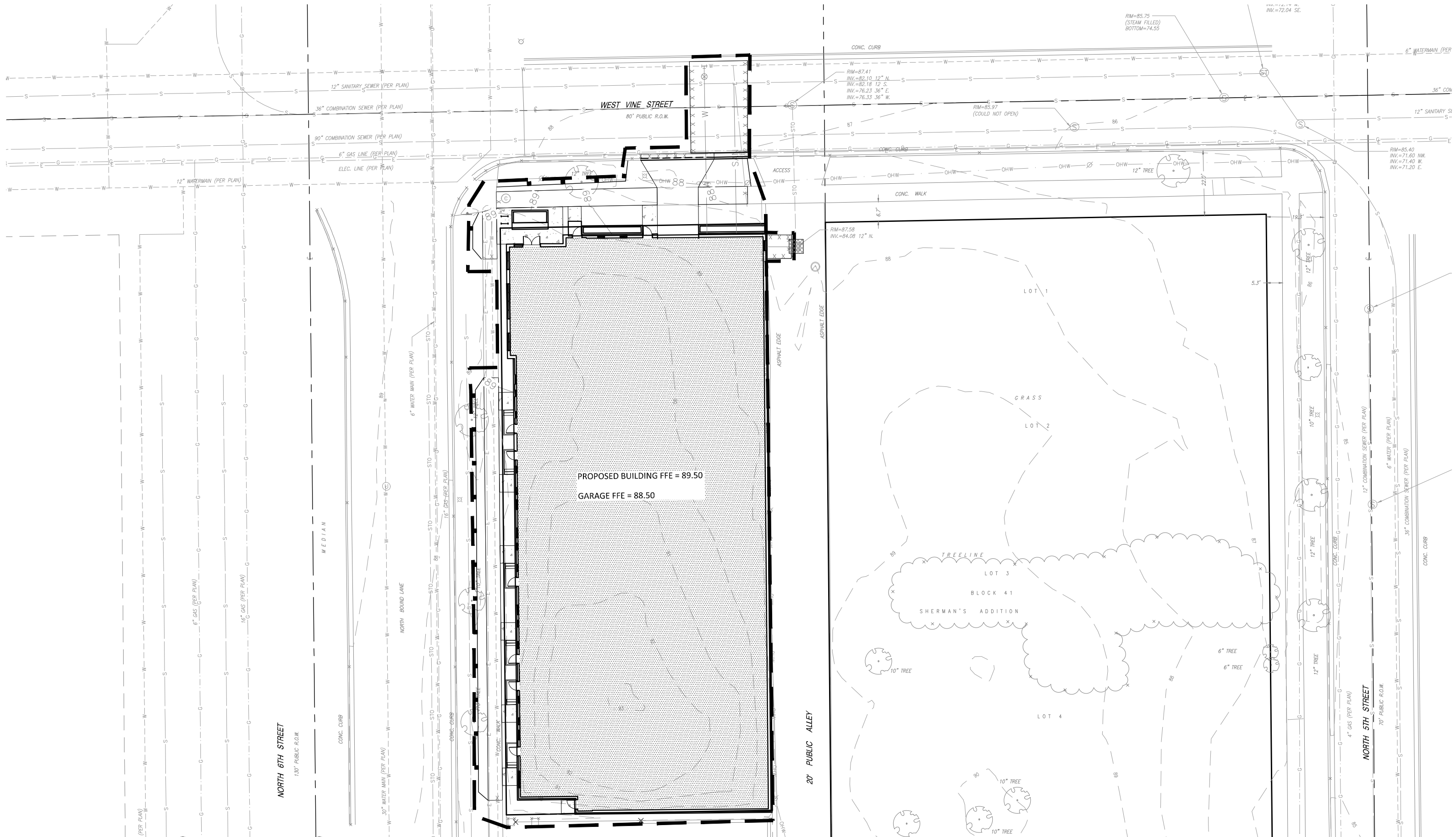
Engberg Anderson Project No. 203213.00



CITY PLACE 2

SITE GRADING PLAN
SCALE: 1" = 30'

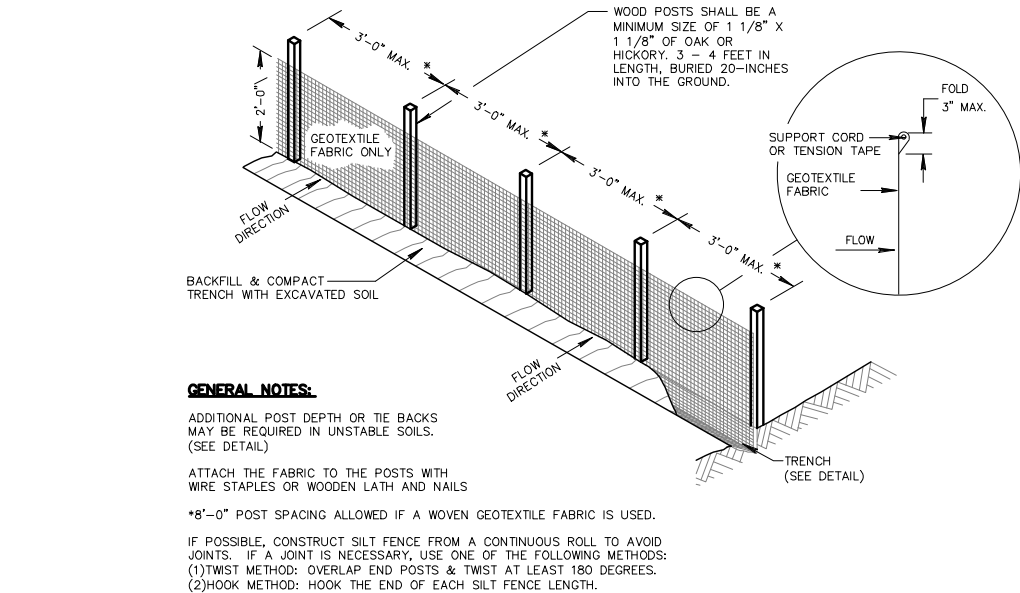
Engberg Anderson Project No. 203213.00



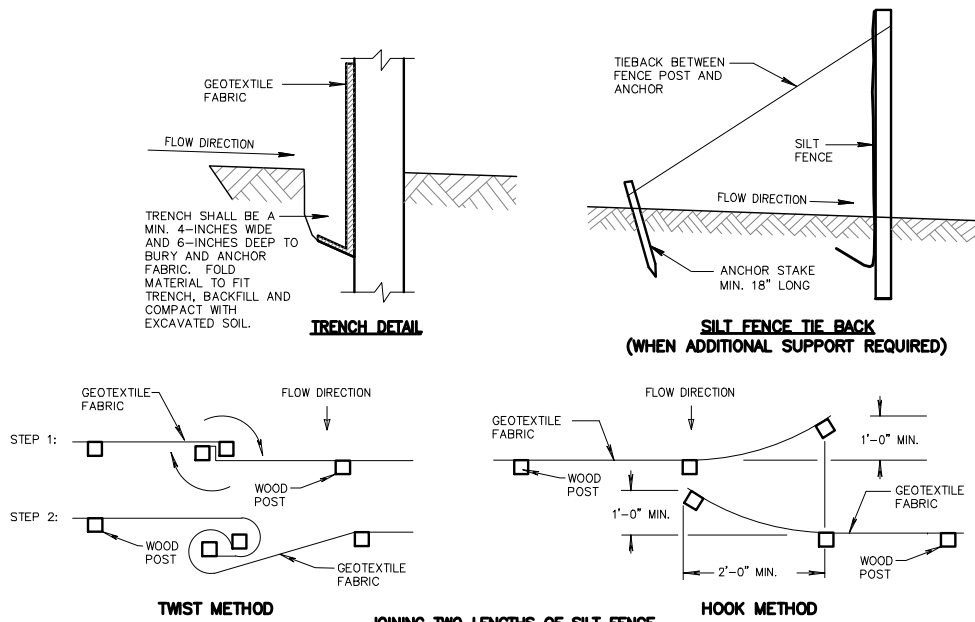
CITY PLACE 2

EROSION CONTROL DETAILS
SCALE: 1" = 30'

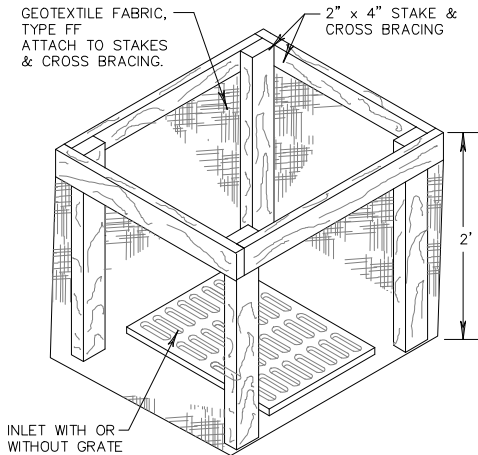
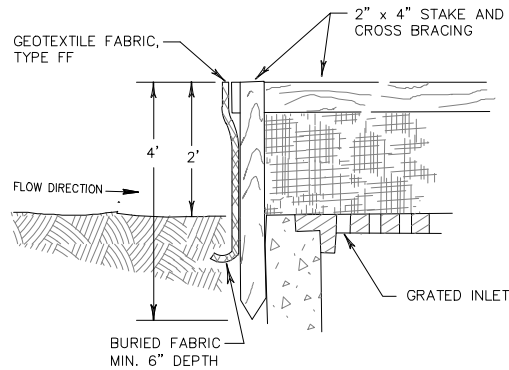
Engberg Anderson Project No. 203213.00



AXONIMETRIC VIEW



1 FILTER FABRIC SILT FENCE DETAIL
N.T.S.



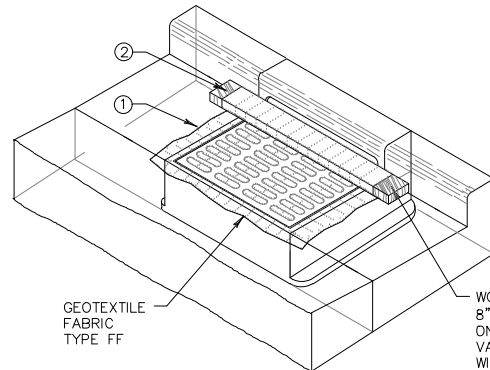
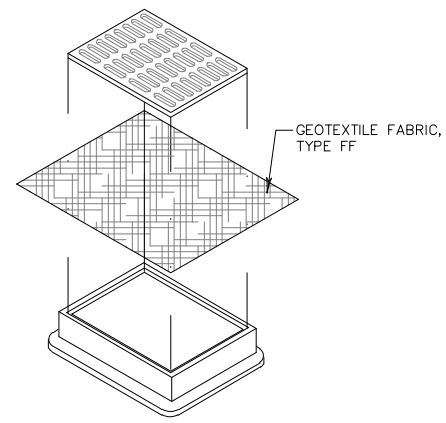
INLET PROTECTION, TYPE A

GENERAL NOTES

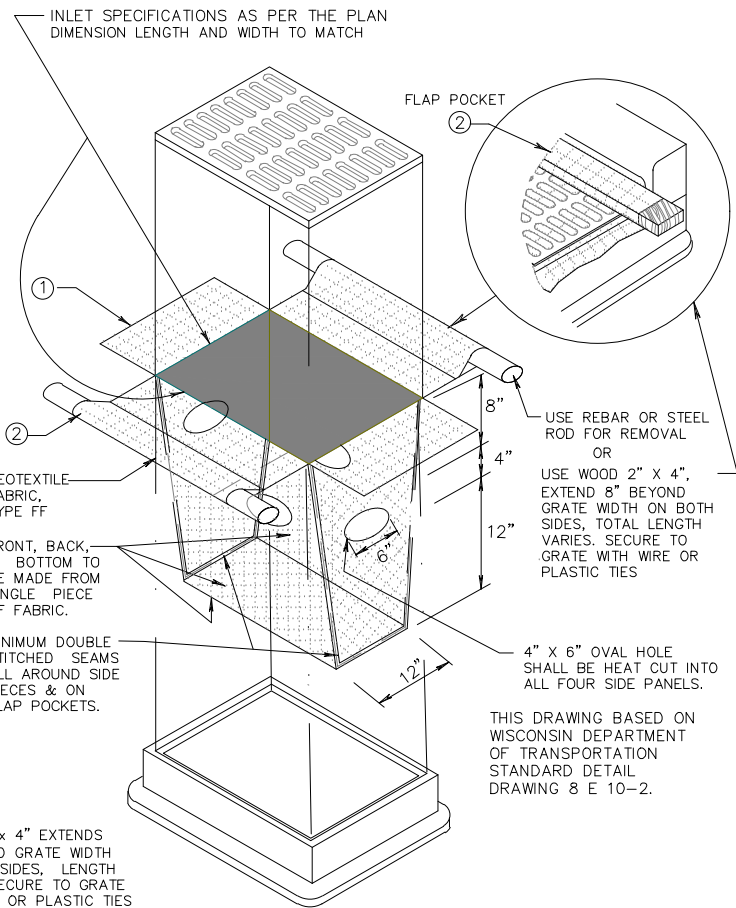
MANUFACTURED ALTERNATIVES APPROVED AND LISTED ON THE DEPARTMENT'S EROSION CONTROL PRODUCT ACCEPTABILITY LIST MAY BE SUBSTITUTED.

WHEN REMOVING OR MAINTAINING INLET PROTECTION, CARE SHALL BE TAKEN SO THAT THE SEDIMENT TRAPPED ON THE GEOTEXTILE FABRIC DOES NOT FALL INTO THE INLET. ANY MATERIAL FALLING INTO THE INLET SHALL BE REMOVED IMMEDIATELY.

- FINISHED SIZE SHALL EXTEND A MINIMUM OF 10" AROUND THE PERIMETER TO FACILITATE MAINTENANCE OR REMOVAL. SIDE FLAPS, WHERE REQUIRED SHALL BE A MIN. OF TWO INCHES LONG. FOLD THE FABRIC OVER AND REINFORCE WITH MULTIPLE STITCHES.
- FOR INLET PROTECTION, TYPE C (WITH CURB BOX), FLAP POCKETS SHALL BE LARGE ENOUGH TO ACCEPT WOOD 2"x4", THE REBAR, STEEL PIPE, OR WOOD SHALL BE INSTALLED IN THE FLAP AND NOT BLOCK THE TOP HALF OF THE CURB BOX OPENING.



INLET PROTECTION, TYPE C WITH CURB BOX



INLET PROTECTION, TYPE D (CAN BE INSTALLED IN ANY INLET TYPE, WITH OR WITHOUT A CURB BOX)

INSTALLATION NOTES

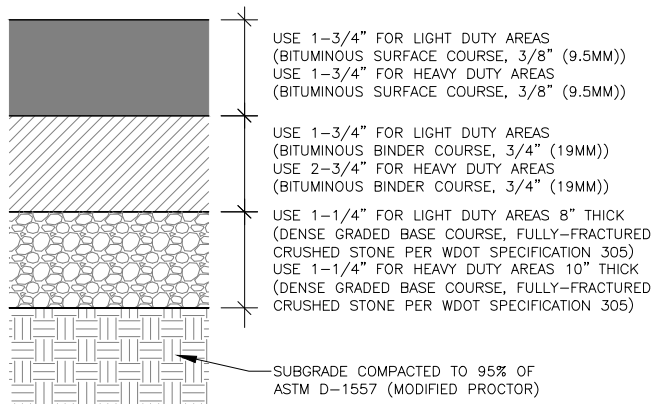
TYPE B & C

TRIM EXCESS FABRIC A MINIMUM OF 10" AROUND GRATE FOR MAINTENANCE OR REMOVAL. THE CONTRACTOR SHALL DEMONSTRATE A METHOD OF MAINTENANCE, USING A SEWN FLAP, HAND HOLDS OR OTHER METHOD TO PREVENT ACCUMULATED SEDIMENT FROM ENTERING THE INLET.

TYPE D

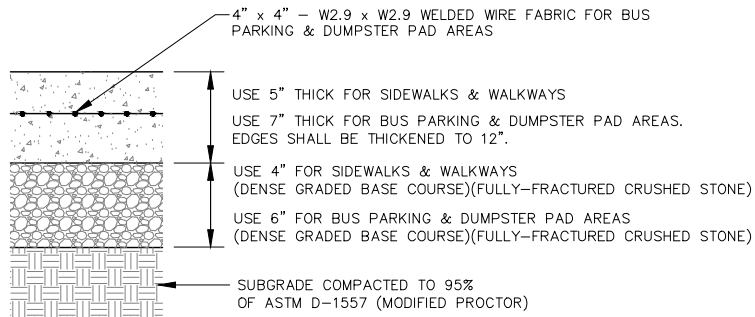
UTILIZE INLET PROTECTION TYPE D IN INLETS DEEPER THAN 30", MEASURED FROM THE BOTTOM OF THE INLET TO THE TOP OF THE GRATE. THE INSTALLED BAG SHALL HAVE A MINIMUM SIDE CLEARANCE, BETWEEN THE INLET WALLS AND THE BAG, MEASURED AT THE BOTTOM OF THE OVERFLOW HOLES, OF 3". WHERE NECESSARY THE CONTRACTOR MAY CINCH THE BAG, USING PLASTIC ZIP TIES, TO FIT INLETS LESS THAN 30" DEPTH. THE TIES SHALL BE PLACED AT A MAXIMUM OF 4" FROM THE BOTTOM OF THE BAG.

4 INLET PROTECTION DETAIL
N.T.S.



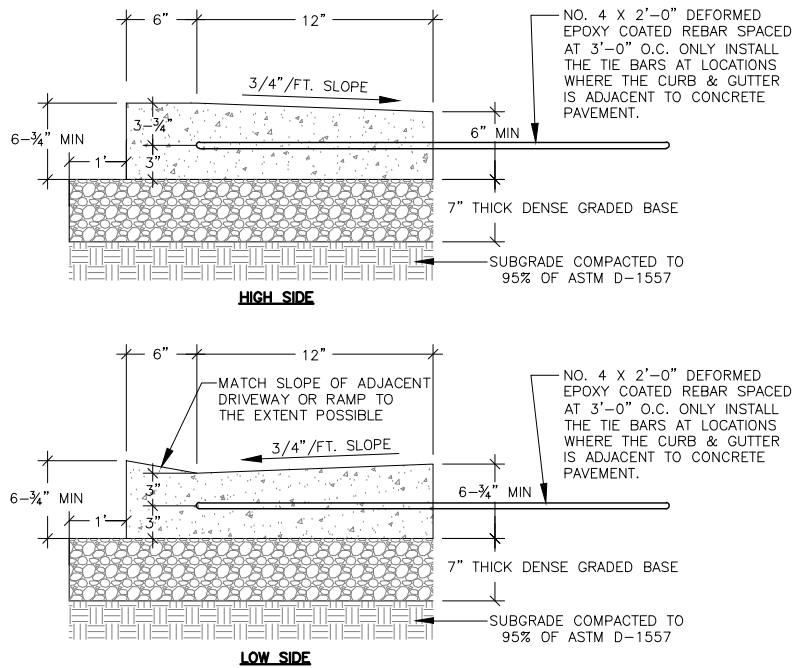
5 ASPHALTIC CONCRETE PAVEMENT

N.T.S.



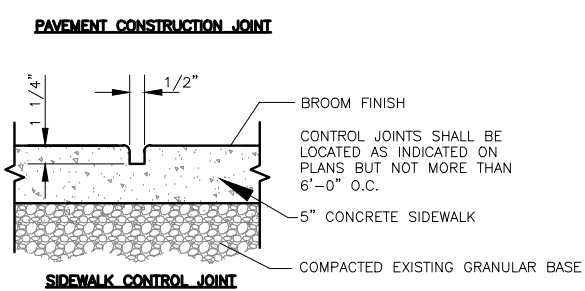
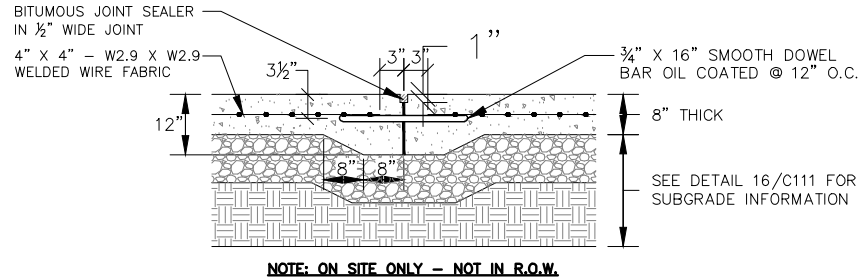
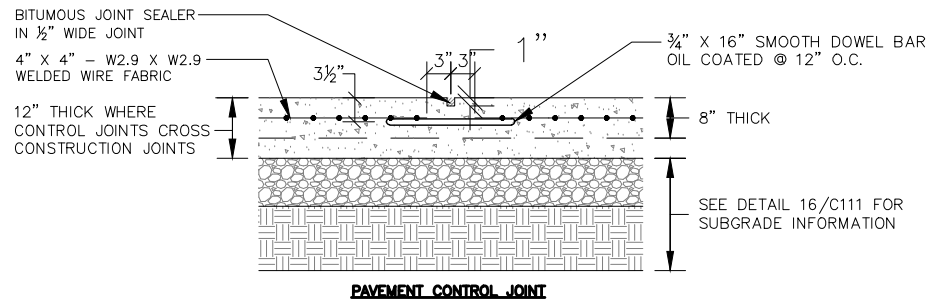
6 CONCRETE SIDEWALK/SLAB

N.T.S.



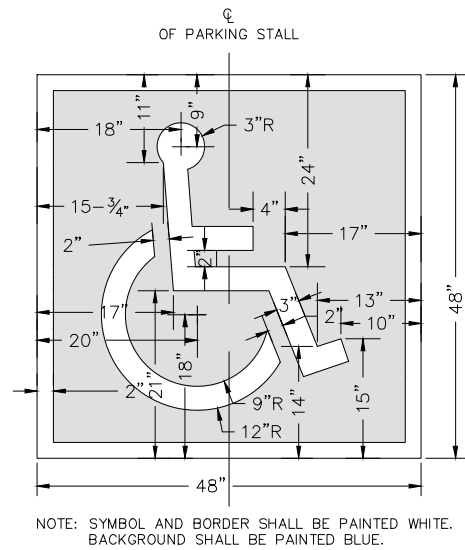
9 18-INCH DEPRESSED CONCRETE CURB & GUTTER

N.T.S.



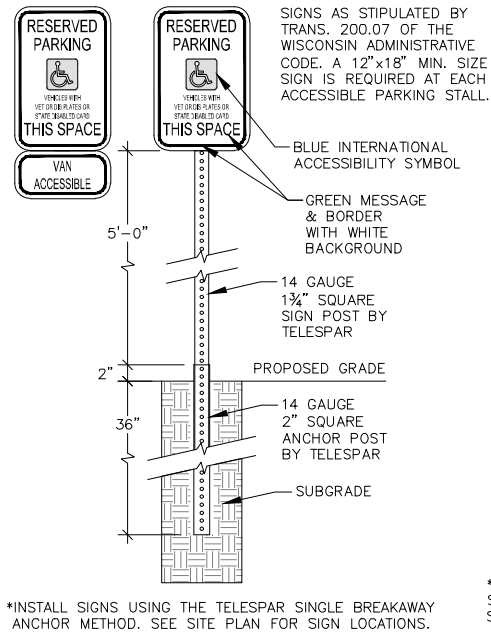
7 CONTROL & CONSTRUCTION JOINT DETAILS (TYP.)

N.T.S.



16 ACCESSIBLE PARKING STALL SYMBOL

N.T.S.

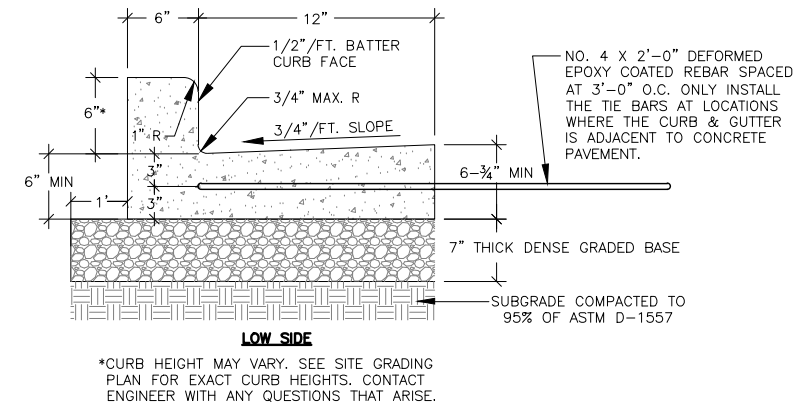


17 ACCESSIBLE PARKING STALL SIGN

N.T.S.

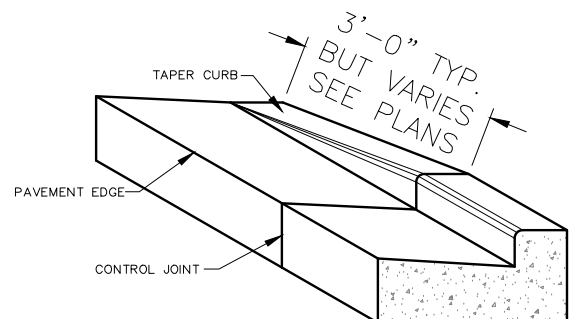
8 18-INCH BARRIER CONCRETE CURB & GUTTER

N.T.S.



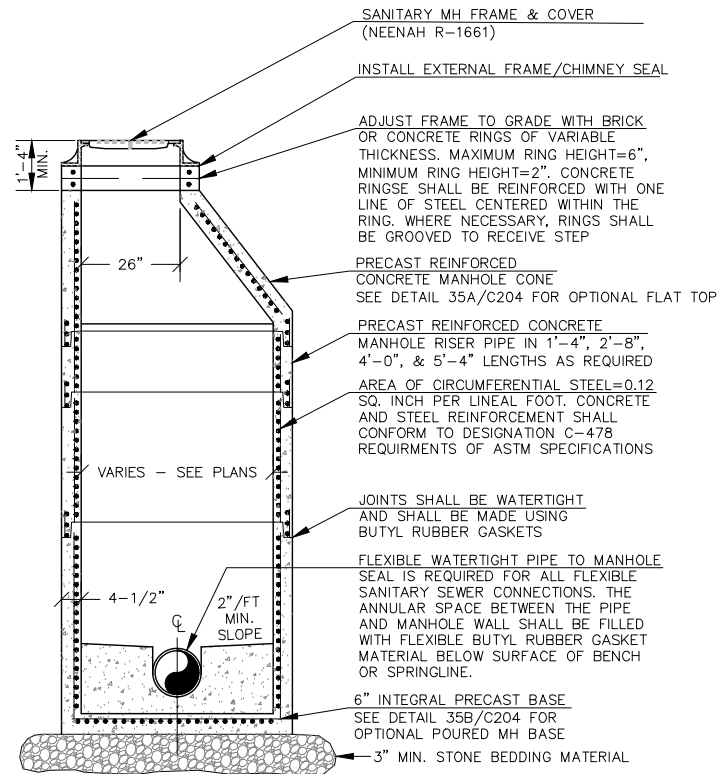
18 SIGN POST DETAIL

N.T.S.



14 CONCRETE CURB & GUTTER TRANSITION TO ZERO-FACE CURB

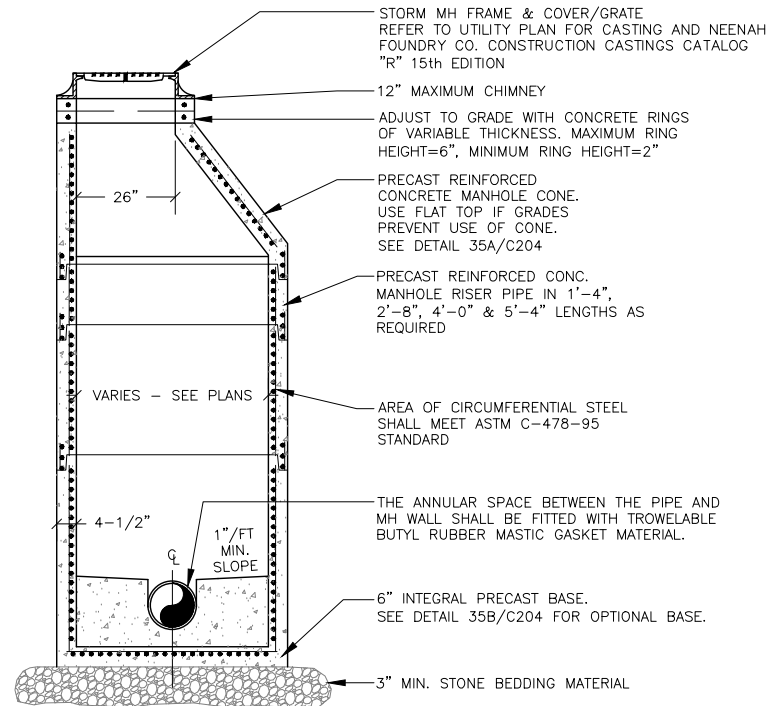
N.T.S.



SANITARY MANHOLE NOTES:

1. 4" MIN. BEDDING MATERIAL REQUIRED UNDER INTEGRAL PRECAST MANHOLE BASE WITH A MINIMUM OF 4" OF GRANULAR BACKFILL MATERIAL PLACED AROUND THE OUTSIDE OF THE STRUCTURE.
2. SEE STANDARD SPECIFICATIONS FOR SEWER & WATER CONSTRUCTION IN WISCONSIN, FILE NO. 12 FOR PRECAST MANHOLE AND FILE NO. 13 FOR MANHOLE INVERTS, INCLUDING INVERTS OF LATERAL SEWERS THAT CONNECT DIRECTLY TO MANHOLES.
3. MANHOLES SHALL BE PROVIDED WITH AN EXTERNAL MANHOLE CHIMNEY SEAL AS MANUFACTURED BY ADAPTOR INC., WEST ALLIS, WI. THE EXTERNAL MANHOLE SEAL SHALL BE INSTALLED IN ACCORDANCE WITH THE MANUFACTURER'S INSTRUCTIONS. SEALS SHALL SPAN ENTIRE CHIMNEY HEIGHT. THE SEALS SHALL BE WATER TESTED FOR LEAKS AFTER THE BOTTOM COMPRESSION BAND IS INSTALLED. AFTER THE SEAL HAS SUCCESSFULLY PASSED THE LEAKAGE TEST, DRAIN THE WATER AND INSTALL THE TOP BAND.

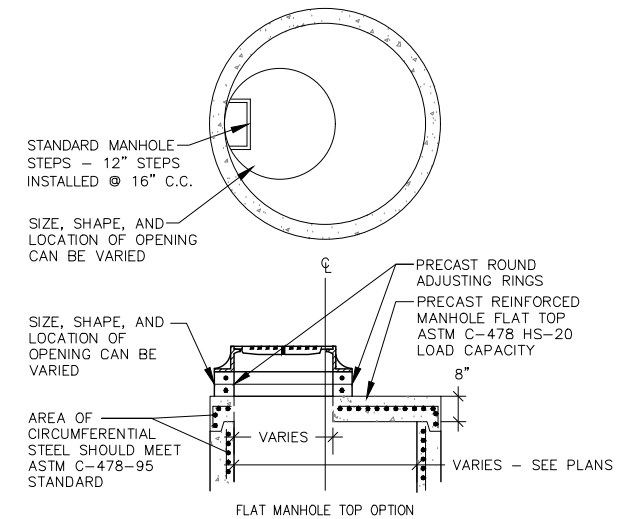
34 SANITARY MANHOLE DETAIL N.T.S.



STORM MANHOLE NOTES:

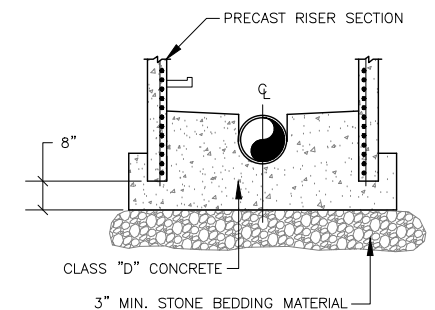
- 1.) PRECAST CONCRETE ADJUSTING RINGS TO BE REINFORCED WITH ONE HOOP OF STEEL CENTERED WITHIN THE RING. WHERE NECESSARY, RINGS SHALL BE GROOVED TO RECEIVE STEP.
- 2.) CONCRETE AND STEEL REINFORCEMENT SHALL CONFORM TO DESIGNATION C-478 REQUIREMENTS OF ASTM SPECIFICATIONS.
- 3.) JOINTS SHALL BE WATERTIGHT AND SHALL BE MADE USING RUBBER GASKETS OR BUTYL RUBBER MASTIC MATERIAL.
- 4.) 3" MIN. BEDDING MATERIAL REQUIRED UNDER MANHOLE BASE AND BACKFILLED STRUCTURE WITH GRANULAR BACKFILL MATERIAL.
- 5.) SEE STANDARD SPECIFICATIONS, FILE NO. 12 FOR PRECAST MANHOLE AND FILE NO. 13 FOR MANHOLE INVERTS, INCLUDING INVERTS OF LATERAL SEWERS THAT CONNECT DIRECTLY TO MANHOLES.

35 STORM MANHOLE DETAIL N.T.S.



NOTE: USE ONLY WHEN LACK OF COVER PREVENTS USE OF CONE MANHOLE

35A OPTIONAL FLAT TOP MANHOLE WITH N.T.S. ROUND FRAME & COVER



35B OPTIONAL POURED MANHOLE BASE N.T.S. FOR MANHOLES

Plant Schedule						
Symbol	Scientific Name	Common Name	Quantity	Spacing	Install Size	Size
Maturity in ft. (Height/Spread)						
Evergreen Shrubs:						
GBS	Picea pungens 'Glauca Globosa'	Globe Blue Spruce	8	Per Plan	#5 cont.	3-5'5-6'
Deciduous Shrubs:						
OH	Hydreangea quercifolia	Oakleaf Hydrangea	8	Per Plan	#5 cont.	4-6'4-6'
SDH	Hydrangea quercifolia 'Sikes Dwarf'	Sikes Dwarf Oakleaf Hydrangea	5	Per Plan	#5 cont.	2-3'1/4'
SJV	Hypericum kalmianum	St John's Wort	22	Per Plan	#3 cont.	2-4'2-4'
Perennials:						
CFA	Astilbe x Beauty of Ernst PP17343	Color Flash Astilbe	17	Per Plan	1 gal.	24-48"12-18"
LBS	Schizachyrium scoparium	Little Bluestem Grass	35	Per Plan	1 gal.	24-48"12-18"
SDD	Hemerocallis 'Stella De Oro'	Stella De Oro Daylily	8	Per Plan	1 gal.	16-18"16-24"
NOTE: Installation contractor is responsible for verifying plant count from plan. Plan quantities take precedence over list.						

1

LANDSCAPE SCHEDULE

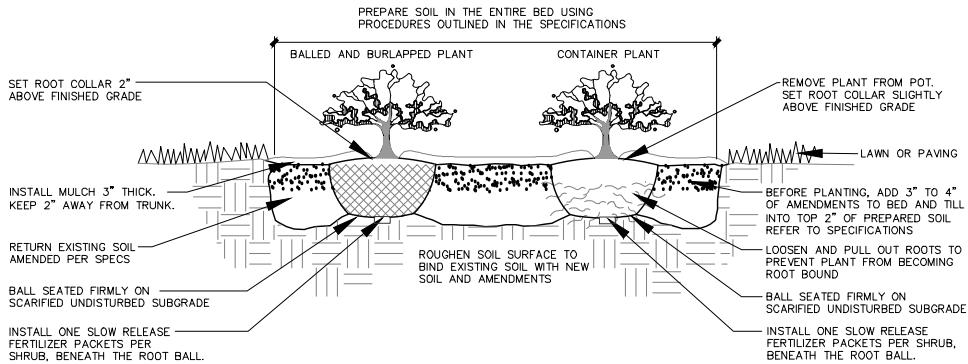
REFER TO SPECIFICATIONS FOR ADDITIONAL INFORMATION

- ALL PLANT MATERIAL SHALL BE OBTAINED FROM A NURSERY LOCATED IN ZONE 5, CONFORM TO APPLICABLE REQUIREMENTS OF THE CURRENT EDITION OF THE AMERICAN STANDARD FOR NURSERY STOCK, AND BOTANICAL NAMES SHALL BE ACCORDING TO THE CURRENT EDITION OF "STANDARDIZED PLANT NAMES PREPARED BY THE AMERICAN JOINT COMMITTEE ON HORTICULTURE NOMENCLATURE.
- CONTRACTOR TO PROVIDE TO THE LANDSCAPE ARCHITECT SAMPLES OF ALL BARK AND MINERAL/STONE MULCHES, DECORATIVE GRAVELS, MAINTENANCE STRIP STONE, OR OTHER GROUND COVER MATERIALS FOR APPROVAL PRIOR TO INSTALLATION.
- BARK MULCH TO BE FRESHLY ACQUIRED HARDWOOD SHREDDED BARK MULCH. NOT DOUBLE MILLED, EXCESSIVE DIRT AND DUST LIKE MATERIAL OR OLD MATERIAL IS NOT ACCEPTABLE.
- LANDSCAPE EDGING TO BE ALUMINUM EDGING. REFER TO SPECIFICATION 32 93 00 PLANTS FOR ADDITIONAL INFORMATION.
- ALL PLANTING AREAS TO RECEIVE A 3-INCH THICK LAYER OF HARDWOOD SHREDDED BARK MULCH OVER TYPAR WEED FABRIC WITH EDGING. EDGING TO BE INSTALLED BETWEEN DIFFERENT TYPES OF MULCHES, BETWEEN MULCHES AND TURF, AND/OR WHERE SPECIFICALLY NOTED ON THE PLAN. REFER TO SPECIFICATION 32 93 00 PLANTS FOR ADDITIONAL INFORMATION.
- INSTALL SHOVEL CUT EDGE AROUND ALL INDIVIDUAL TREES AND SHRUBS IN LAWN AREAS AND ALONG PAVEMENT WHERE PLANTING AREAS ABUT TO PREVENT HARDWOOD SHREDDED BARK MULCH FROM SPILLING OUT OF PLANTING AREA.
- CONTRACTOR RESPONSIBLE FOR MAINTENANCE OF PLANT MATERIAL FOR 90 DAYS FROM INSTALLATION, INCLUDING WATERING, WEEDING, ETC. CONTRACTOR IS RESPONSIBLE FOR MAINTENANCE OF SEEDED AREAS FOR 60 DAYS FROM INSTALLATION, INCLUDING WATERING, WEEDING, ETC. CONTRACTOR TO PROVIDE AND REVIEW MAINTENANCE INSTRUCTIONS WITH THE OWNER PRIOR TO THE COMPLETION OF THESE MAINTENANCE PERIODS. REFER TO SPECIFICATIONS FOR ADDITIONAL REQUIREMENTS.
- CLEANLY PRUNE AND REMOVE DAMAGED BRANCHES, DEAD WOOD, AND ROOTS IMMEDIATELY PRIOR TO PLANTING. DO NOT CUT LEADERS OR LEAVE "V" CROTCHES OR DOUBLE LEADERS UNLESS A MULTI-STEM TREE IS SPECIFIED.
- REMOVE BURLAP, WIRE BASKET, ROPE, TWINE, AND ALL SYNTHETIC MATERIAL FROM THE ROOTS, TRUNK, OR CROWN OF PLANT.
- REMOVE EXCESS SOIL ABOVE ROOT COLLAR.
- PLANT TREES AND SHRUBS SO THAT THE ROOT COLLAR IS 2" ABOVE FINISHED GRADE OR SEVERAL INCHES ABOVE GRADE IF PLANT IS INSTALLED IN POOR SOILS.
- PLANT TREES AND SHRUBS WITH SAME ORIENTATION AS WHEN HARVESTED FROM THE NURSERY OR TO SHOWCASE THE MOST AESTHETIC VIEW.
- PLANT ALL TREES WITH THREE SLOW RELEASE FERTILIZER PACKETS, SPACED EQUIDISTANT AROUND THE EDGE OF THE ROOT BALL.
- PLANT ALL SHRUBS WITH ONE SLOW RELEASE FERTILIZER PACKET, PLACED BELOW THE ROOTING SYSTEM.
- WATER AND TAMP BACKFILL AND ROOTS OF ALL NEWLY SET PLANT MATERIAL SO THE SOIL AND ROOTS ARE THOROUGHLY SOAKED AND AIR POCKETS ARE REMOVED.
- FOR INDIVIDUAL TREES & SHRUBS PLANTED IN TURF AREAS, PROVIDE CONTINUOUS 3" SOIL SAUCER TO CONTAIN WATER & MULCH (TREES ON SLOPES SHALL BE SAUCERED ON THE DOWNHILL SIDE)
- INSTALL 3" THICK SHREDDED HARDWOOD BARK MULCH RING 3'-0" DIA. FOR DECIDUOUS TREES AND ALL INDIVIDUAL SHRUBS IN LAWN AREAS, 5'-0" DIA. FOR EVERGREEN TREES. KEEP MULCH 2" AWAY FROM TRUNKS.
- STAKING – ONLY STAKE EVERGREEN TREES 5'-0" OR GREATER IN HEIGHT OR TREES THAT ARE UNABLE TO REMAIN UPRIGHT AFTER PLANTING. TREES WILL BECOME STRONGER FASTER WHEN THE TOP 2/3 OF THE TREE IS FREE TO SWAY. DO NOT ATTACH WIRE DIRECTLY TO TREES OR THROUGH HOSES – UTILIZE GROMMETED, SYNTHETIC STRAPS AT LEAST 2" WIDE AROUND THE TREE, ATTACH STRAPPING TO STAKE WITH WIRE. STAKE ONLY WHEN NECESSARY. STAKES SHOULD BE DRIVEN DEEPLY INTO THE GROUND TO PREVENT DISLODGING. CHECK AT LEAST EVERY THREE MONTHS FOR BINDING OR OTHER PROBLEMS. STAKES AND TIES SHOULD BE REMOVED SIX MONTHS TO ONE YEAR AFTER PLANTING.
- STONE CHIP MAINTENANCE STRIP TO BE 3-INCHES DEEP OVER WEED FABRIC WITH ALUMINUM EDGING. CONTRACTOR TO INSTALL MAINTENANCE STRIP 2-FEET WIDE ALONG BUILDING EDGE, WHERE INDICATED ON L101 SITE LANDSCAPE PLAN.
- STONE CHIP TO BE ¾-INCH RAVENS BLACK DECORATIVE STONE CHIP FROM HALQUIST STONE. CONTRACTOR TO CONTACT HALQUIST STONE N51 W23563 LISBON ROAD SUSSEX, WI 53089 TELEPHONE (262)246-9000 EMAIL: INFO@HALQUISTSTONE.COM.
- NO MOW TO BE NO MOW FESCUE SEED MIX WITH ANNUAL RYE NURSE CROP FROM PRAIRIE NURSERY, INC. REFER TO SPECIFICATIONS FOR ADDITIONAL INFORMATION. PRAIRIE NURSERY ADDRESS: PO BOX 306 WESTFIELD, WI 53964. TELEPHONE: 1-800-476-9453 FAX: 608-296-2741.
- NATIVE SEED MIX TO BE SHORT GRASS PRAIRIE FOR MESIC SOILS SEED MIX WITH ANNUAL RYE NURSE CROP FROM AGRECOL, LLC. REFER TO SPECIFICATIONS FOR ADDITIONAL INFORMATION. AGRECOL, LLC ADDRESS: 10101 NORTH CASEY ROAD EVANSVILLE, WI 53536. TELEPHONE: 608-223-3571 FAX: 608-884-4640 EMAIL: ECOSOLUTIONS@AGRECOL.COM.
- REFER TO SPECIFICATIONS 32 93 00 PLANTS AND 32 92 00 TURF AND GRASSES FOR ADDITIONAL INFORMATION.

2

LANDSCAPE NOTES

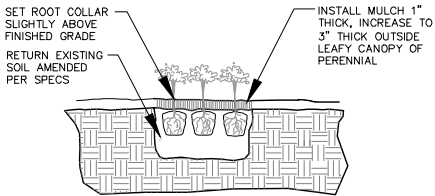
REFER TO SPECIFICATIONS FOR ADDITIONAL INFORMATION



3

DECIDUOUS & EVERGREEN SHRUB PLANTING

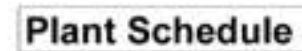
N.T.S.



4

PERENNIAL PLANTING

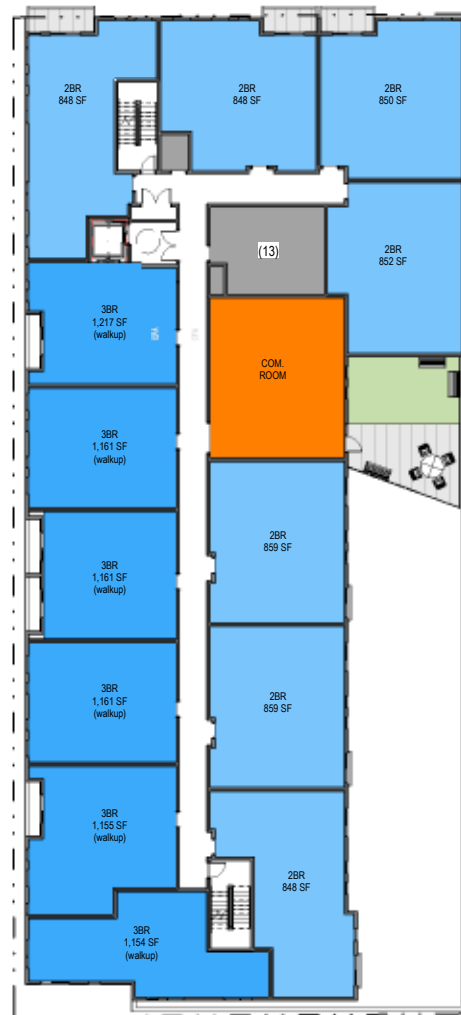
N.T.S.



NOTE: Installation contractor is responsible for verifying plant count from plan. Plan quantities take precedence over list.



① LEVEL 1
SCALE: 1/16" = 1'-0"

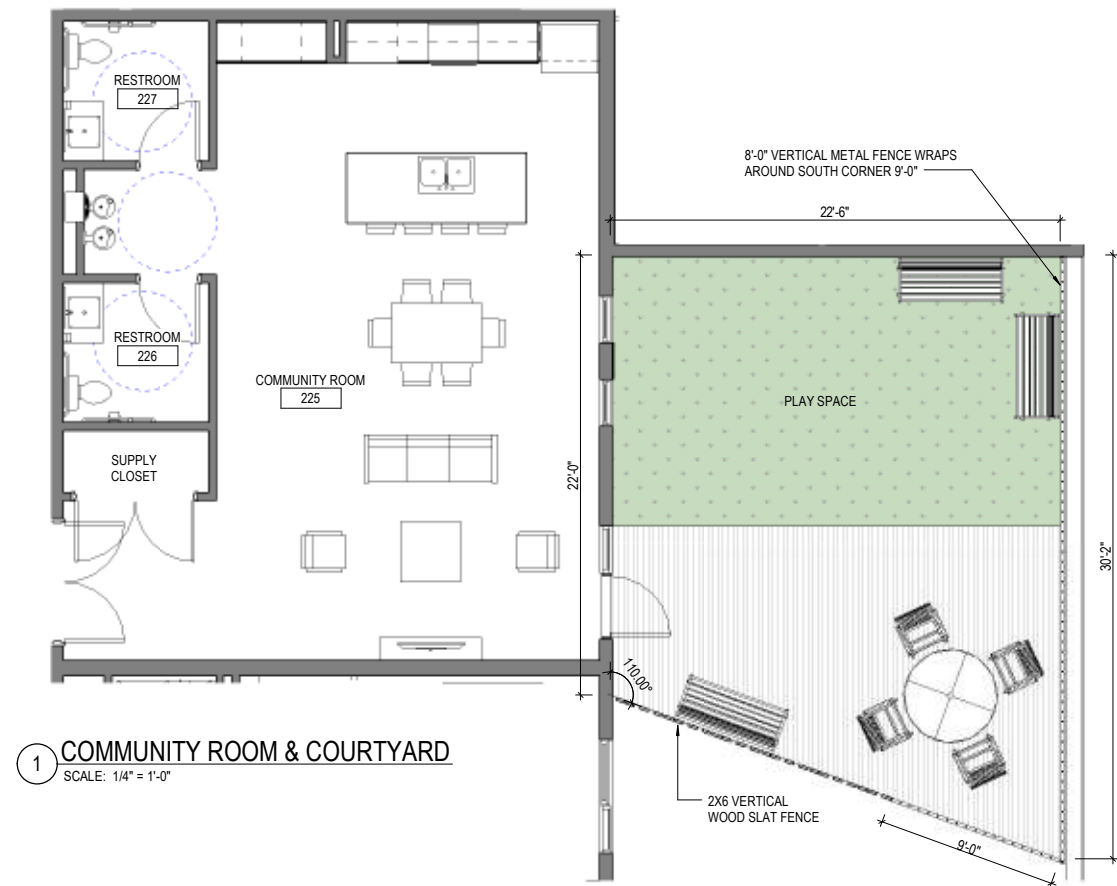


② LEVEL 2
SCALE: 1/16" = 1'-0"



③ LEVEL 3 & 4
SCALE: 1/16" = 1'-0"







1 WEST ELEVATION
SCALE: 1/8" = 1'-0"

MAJOR CHANGES FOR LAST SUBMITTAL:

- ADDITIONAL STORY (ORIGINALLY 3-STORY, NOW 4-STORY BUILDING)
- IMPROVED DESIGN CONCEPT, SIMILAR COLORS TO CITY PLACE 1 W/ ADDED WOOD-LOOK ACCENTS
- LARGER INSET BALCONIES
- MORE BRICK MASONRY ON NORTH & WEST FACADES
- OVERHANG ON 2ND FLOOR TO CREATE SHADOW LINE
- LESS WINDOW GLAZING AROUND NORTHWEST CORNER
- LESS BRICK ON THE ALLEY SIDE; ADDED GREEN SCREENS
- LAP SIDING ON EAST & SOUTH FACADES



2 NORTH ELEVATION
SCALE: 1/8" = 1'-0"

CITY PLACE 2

BUILDING ELEVATIONS
SCALE: 1/8" = 1'-0"

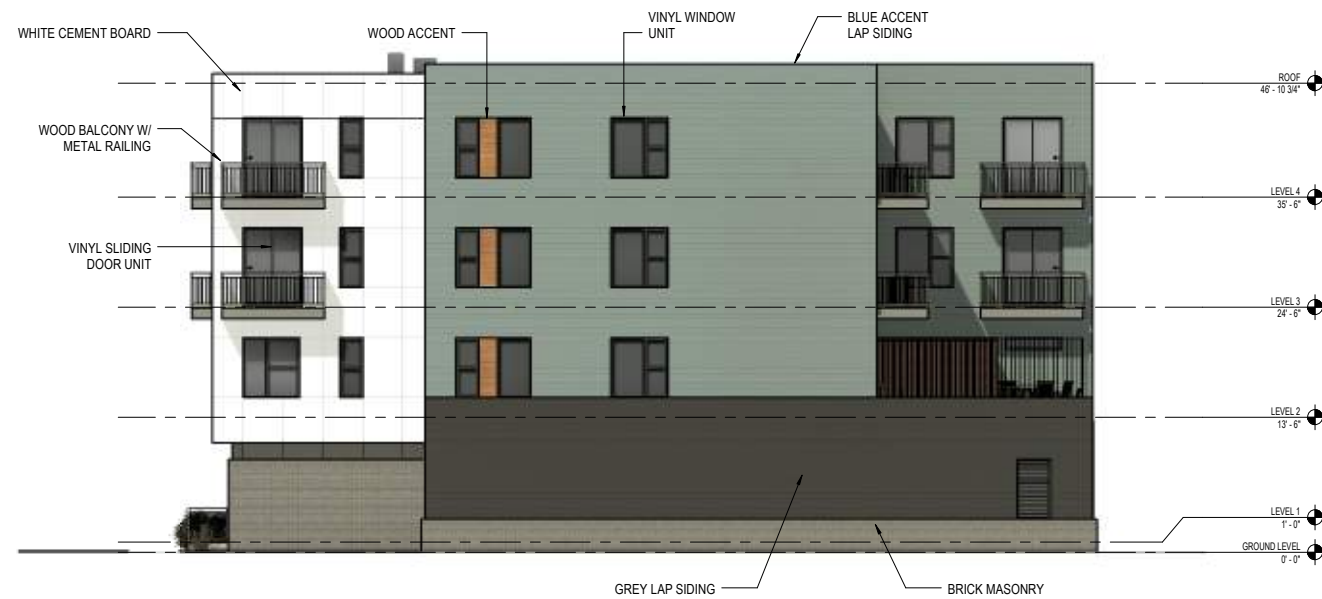
Engberg Anderson Project No. 203213.00



1 EAST ELEVATION
SCALE: 1/8" = 1'-0"

MAJOR CHANGES FOR LAST SUBMITTAL:

- ADDITIONAL STORY (ORIGINALLY 3-STORY, NOW 4-STORY BUILDING)
- IMPROVED DESIGN CONCEPT, SIMILAR COLORS TO CITY PLACE 1 W/ ADDED WOOD-LOOK ACCENTS
- LARGER INSET BALCONIES
- MORE BRICK MASONRY ON NORTH & WEST FACADES
- OVERHANG ON 2ND FLOOR TO CREATE SHADOW LINE
- LESS WINDOW GLAZING AROUND NORTHWEST CORNER
- LESS BRICK ON THE ALLEY SIDE; ADDED GREEN SCREENS
- LAP SIDING ON EAST & SOUTH FACADES



2 SOUTH ELEVATION
SCALE: 1/8" = 1'-0"

CITY PLACE 2

BUILDING ELEVATIONS
SCALE: As indicated

Engberg Anderson Project No. 203213.00



MILWAUKEE | MADISON | TUCSON | CHICAGO

A401



1 WALK-UP UNIT ELEVATION
SCALE: 3/8" = 1'-0"





CITY PLACE 2

PERSPECTIVE FROM WEST
SCALE:



MILWAUKEE | MADISON | TUCSON | CHICAGO

Engberg Anderson Project No. 203213.00

A900



CITY PLACE 2

PERSPECTIVE FROM NORTHWEST
SCALE:

Engberg Anderson Project No. 203213.00



MILWAUKEE | MADISON | TUCSON | CHICAGO

A901