

[ABOUT US](#)[CONTACT US](#)

1-888-766-4273

[OUR PRODUCTS](#) [CHOOSING THE RIGHT STYLE](#) [PROJECT GALLERY](#) [VIDEOS](#) [BLOG](#) [REQUEST QUOTE/LAYOUT](#)

## PP235LS Three-Pipe Height Adjustable Snow Guard and Base Plate for Ludowici Spanish Tile

[Our Products: Snow Guard Style > Pipe-Style Snow Guards](#)

SKU: PP235LS

### Available Materials:

- Aluminum with Custom Aluminum Tile Base Plate (Aluminum accessories)
- Brass with Brass Tile Base Plate (Brass accessories)

### Available Finishes:

- Mill Finish (standard) or Powder Coating (additional charge) using RAL TIGER Drylac® Exterior [colors](#)

[Scroll Down or Click for More Information...](#)

AUTODESK® REVIT® BIM OBJECTS

[REQUEST SAMPLE](#)[39Share](#)

(Hover over thumbnail for larger image)

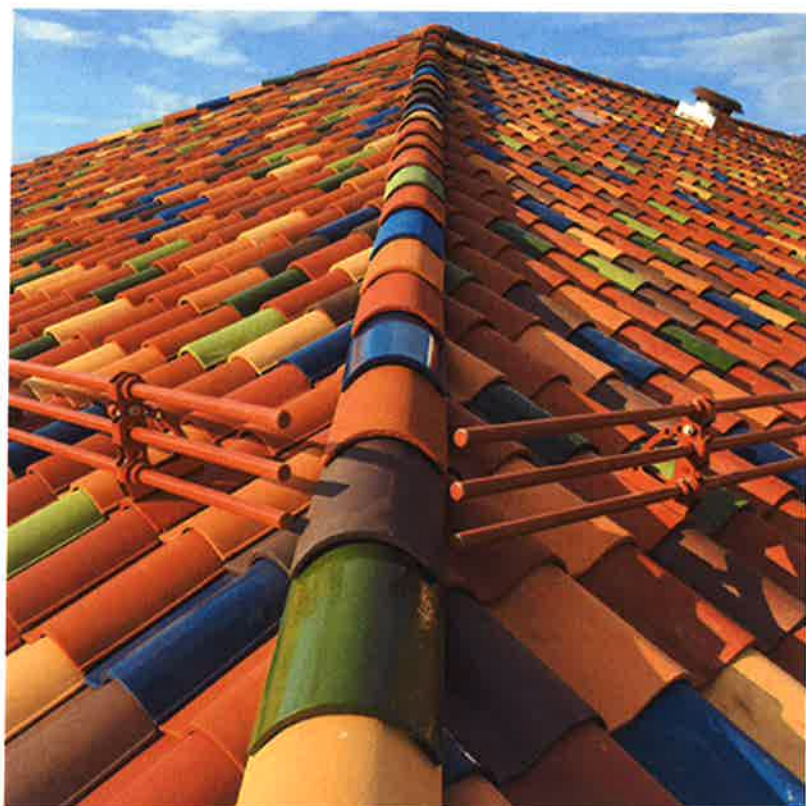
[FEATURES](#)[ROOF TYPE](#)[DOCUMENTATION](#)

### Features/Advantages:

- Height Adjustable - 39° of height adjustability allows for ease of installation and a custom setting
- Tile Base Plate is available in 2 lengths to match your tile: 13 1/4" L or 18 1/4" L (both lengths are 10 9/16" W overall)
- Overall measurements (Tile Base Plate with Bracket extended to tallest, most upright position): 13 1/4" L (or 18 1/4" L) x 10 9/16" W x 11 1/16" H
- Accepts 1" OD Pipe (Tubing)
- Compatible with the use of Ice Screens
- Internal and External Couplings, End Collars and End Caps are available for this system
- Available in a multitude of RAL TIGER Drylac® Exterior Powder Coating [colors](#)
- Designed specifically to match Ludowici Spanish Tile profile
- [GET YOUR QUOTE!](#)

### Applicable Roof Types:

- New Ludowici Spanish Tile
- Existing Ludowici Spanish Tile





---

## **Installation Instructions for PP235 Snow Guard** **(Ludowici Spanish, French & Flat)**

- I. For Bolt Down Style Brackets on Tile Roofs
  - A. Brackets should be mounted onto the plate using the hex bolts (except for Ludowici Spanish stainless and brass, which are welded to the plate) before the plate has been screwed or bolted to the roof deck.
  - B. Consult with an engineer or fastener company to determine the fastener required to attach the base plate to the wood block. Fasteners must exceed 2000 pounds sheer combined.
  - C. Plates should be securely bolted or screwed to the roof in place of a tile.
  - D. Insert tubing through the holes in the uprights.
- II. Locking Collars, End Caps, and Ice Flags (optional)
  - A. Locking collars (PP65) should be placed over each end of each line of tubing. (NOTE: You may have to stagger the collars from outside to inside on 3 pipe styles.) Center the tubing on the snow guards and tighten the set screw on the collar until it no longer slips.
  - B. End caps (PP56) are installed by pressing the cap into the end of the pipe.
  - C. Ice flags (PP95), if used, should be placed over the top tube so that the long leg rests against the uphill side of the tubes. Use the bolt and nut to hold the ice flag in position.

### Snow guard layout for pipe style brackets

- Contact the manufacturer for detailed layout.
- Do not install runs of snow retention bar more than 100 feet long without a break to allow for thermal expansion.
- First row of snow guards is installed above outer most wall or support of the building.

Document version 04.24.2015





---

## **PP235 Ludowici Spanish (Aluminum) Snow Guard** **Specification Sheet**

### **Snow Guards**

#### **PART 1 – GENERAL**

##### **1.1 SUMMARY**

###### **A. WORK INCLUDES**

1. PP235LS Snow guard that attaches directly to the roof deck.
2. Coordinate with the installation of the roof to assure proper placement of the snow guards.
3. Provide appropriate snow guard and fasteners for the roof system

###### **B. RELATED SECTIONS**

1. Section 07600: Flashing and Sheet Metal. MasterFormat™ 2004 07 60 00
2. Division 7: Thermal and Moisture Protection.

##### **1.2 SYSTEM DESCRIPTION**

###### **A. COMPONENTS:**

1. PP235LS Snow guard system consists of snow guard bracket assembly and base tile.
2. Two bolts attach bracket to base plate.
3. Tubing (Snow Fence).
4. Couplings.
5. End Caps.
6. End Collars.
7. Ice Flags.
8. Fasteners
  - a. To be of metal compatible with snow guards.
  - b. Fasteners should be selected for compatibility with the roof deck.
  - c. Fastener strength should exceed or be equal to that of the snow guard system.





**B. DESIGN REQUIREMENTS:**

1. Spacing to be recommended by manufacturer or building engineer.
2. Install a minimum of 3 fasteners per snow guard.
3. It is important to design new structures or assess existing structures to make sure that they can withstand retained snow loads.

**1.3 SUBMITTAL**

- A. Submit manufacturer's specifications, standard detail drawings, installation instructions, and recommended layout.

**1.4 QUALITY ASSURANCE**

- A. Installer to be experienced in the installation of specified roofing material and snow guards for not less than 5 years in the area of the project.

**1.5 DELIVERY / STORAGE / HANDLING**

- A. Inspect material upon delivery and order replacements for any missing or defective items. Keep material dry, covered and off the ground until installed.

**PART 2 – PRODUCTS**

**2.1 MANUFACTURER**

- A. Alpine SnowGuards. A division of Vermont Slate & Copper Services Inc.  
289 Harrel St. Morrisville, VT 05661, (888) 766-4273  
[www.alpinesnowguards.com](http://www.alpinesnowguards.com).

**2.2 MATERIALS**

- A. Snow Guard Bracket - 5000 Series Aluminum.
- B. Base Tile – 6000 Series Extruded Aluminum.
- C. Bolts – 304 Stainless Steel.
- D. Tubing - 6000 Series Aluminum, 1" outside diameter and .120" wall thickness, extruded.





- E. Couplings (choose one):
  - 1. Aluminum – 6000 Series
    - a. Internal and concealed coupling 3" long.
    - b. External and exposed coupling which can also serve as an expansion mechanism 5" long.
- F. End Caps - 304 Stainless Steel.
- G. End Collars - 6000 Series Aluminum.
- H. Ice Flags - 6000 Series Aluminum 3" wide x length (as needed).
- I. Fasteners (can be purchased from others) to be compatible with chosen roof application and meet specified pull out values as shown in load test data.

### 2.3 FINISH (choose one):

- A. Mill Finish – standard
- B. Powder Coated – available at additional cost

## **PART 3 – EXECUTION**

### 3.1 EXAMINATION

- A. Substrate
  - 1. Inspect structure on which snow guard system is to be installed and verify that it will withstand any additional loading that it may incur. Notify general contractor of any deficiencies before installing Alpine SnowGuards.
  - 2. Verify that roofing material has been installed correctly prior to installing snow guards.

### 3.2 INSTALLATION

- A. Comply with architectural drawings and snow guard manufacturer's recommendations for location of system. Comply with manufacturer's written installation instructions for installation and layout.

Document Version 04.24.2015  
07 72 53 Snow Guards

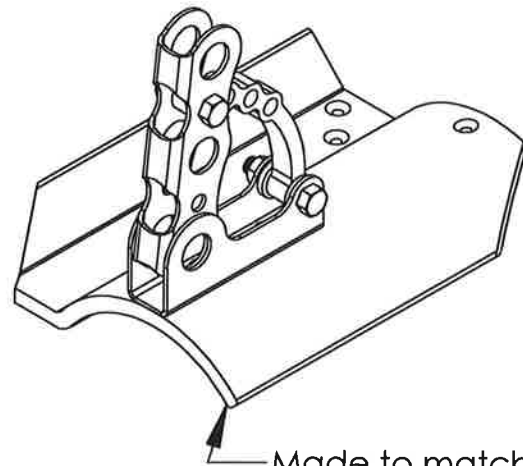
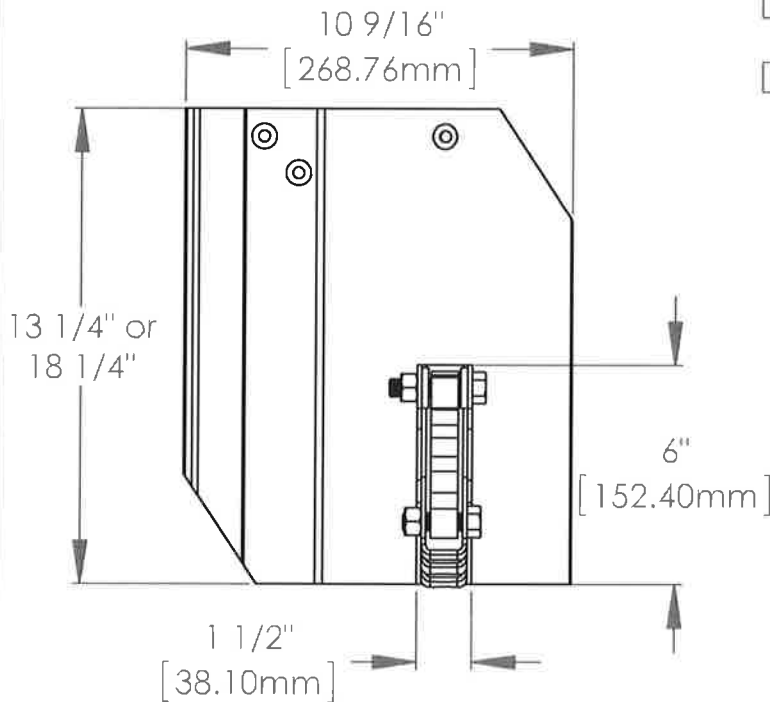


# Cut Sheet - PP235LS Aluminum 13" or 18"

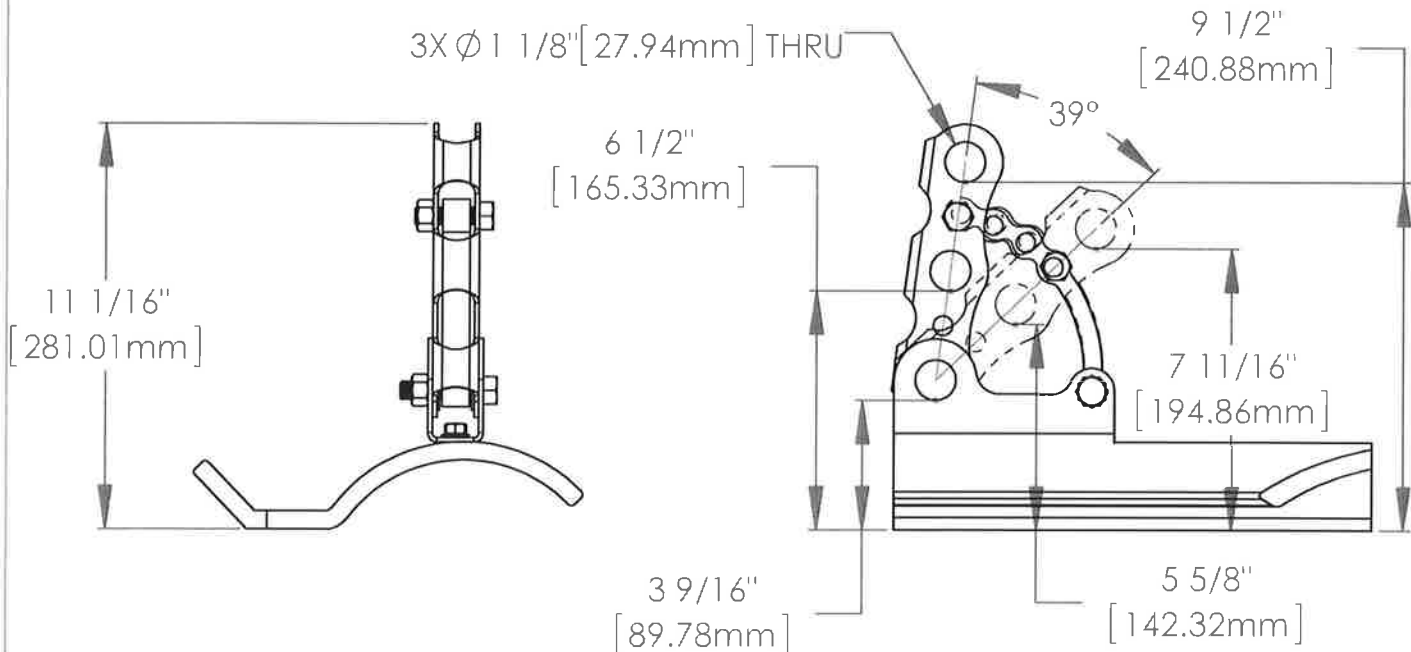
1. Installation to be completed in accordance with manufacturer's written specifications and installation instructions.
2. See spec sheet or contact manufacturer for detailed material, finishes, and configuration options.
3. Contact manufacturer for detailed layout.
4. Do not scale drawings.
5. Subject to change without notice.

## Available Finishes

- ☐ Mill Finish
- ☐ RAL Tiger Drylac Powder Coating
- Color Code: \_\_\_\_\_



Made to match  
Ludowici Spanish Tile



289 Harrel Street  
Morrisville, VT 05661

Toll Free Phone 1.888.766.4273  
Toll Free Fax 1.888.766.9994

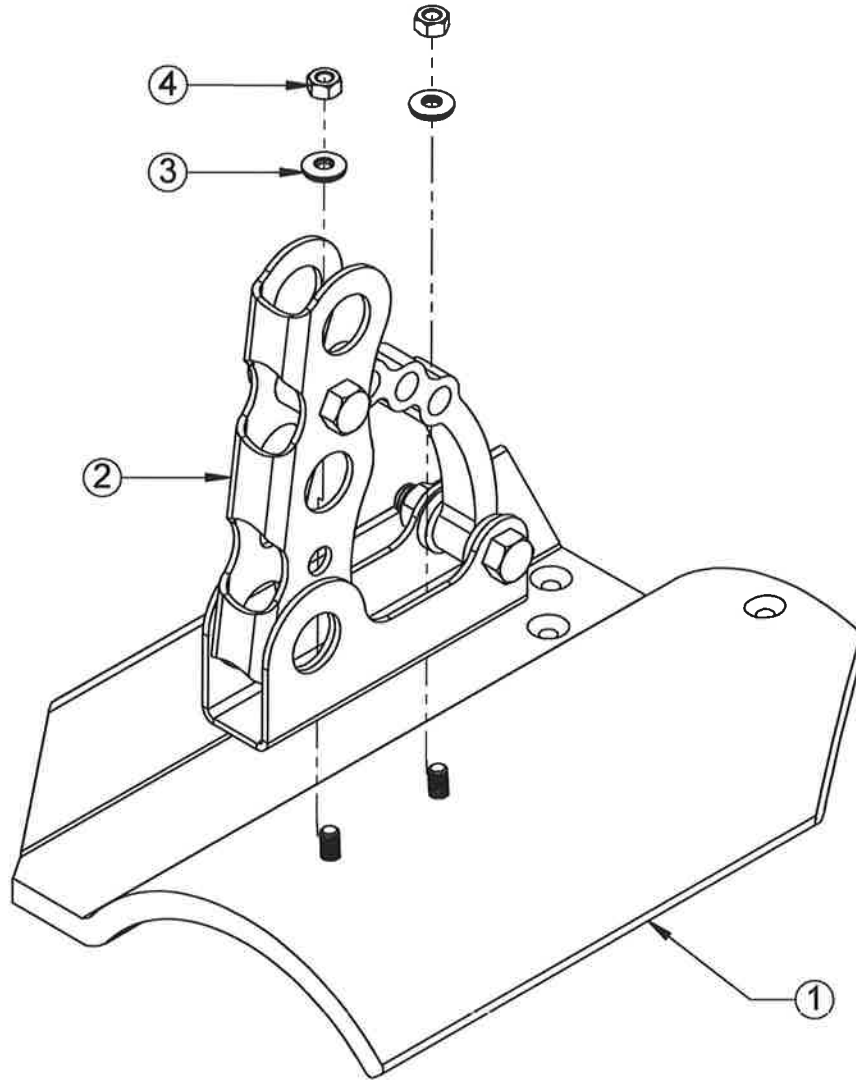
Toll Free Phone 1.877.859.3947  
Toll Free Fax 1.888.766.9994

Material: See Spec Sheet

Scale: 1:5    10/5/2015    ASG: X    EFS: -

# Assembly Sheet - PP235LS-AL-13 or 18

1. Installation to be completed in accordance with manufacturer's written specifications and installation instructions.
2. See spec sheet or contact manufacturer for detailed material, finishes, and configuration options.
3. Contact manufacturer for detailed layout.
4. Do not scale drawings.
5. Subject to change without notice.



ITEM NO.	PART CODE	DESCRIPTION	QTY
1	TILE LUD-SPNSH-AL-13 OR 18	Ludo Spnsh Tile Base - 13" or 18" - AL	
2	PP225-AL-UPKIT	225 3PP Bracket Only-Aluminum	1
3	W-NEO SS-.313	Stainless Steel Neoprene Washer .313ID	2
4	N-HXSS-.3125-18	Nut Stainless Steel Hex Finished .3125-18	2



**ALPINE  
SNOWGUARDS®**



**EcoFasten Solar®**

Toll Free Phone 1.888.766.4273  
Toll Free Fax 1.888.766.9994

Toll Free Phone 1.877.859.3947  
Toll Free Fax 1.888.766.9994

289 Harrel Street  
Morrisville, VT 05661

Material: See Spec Sheet

Scale: 1:3

7/06/2015

ASG: X

EFS: -