

KEYNOTES PER SHEET	
0220-07	EXISTING DECORATIVE METAL WINDOW SCREENS NOT SHOWN FOR CLARITY
0220-08	EXISTING DISPLAY WINDOWS TO REMAIN
0220-09	EXISTING WINDOWS TO REMAIN



milwaukee	333 East Chicago Street Milwaukee, Wisconsin 53202 414.271.5350
madison	309 West Johnson Street, Suite 202 Madison, Wisconsin 53703 608.442.2550
des moines	699 Walnut Street, Suite 400 Des Moines, Iowa 50309 515.724.5840
denver	1899 Wynkoop Street, Suite 300 Denver, Colorado 80202 303.556.4500

PROJECT INFORMATION

JOURNAL SQUARE
REDEVELOPMENT -
1962

333 W. State St.
Milwaukee WI, 53203

ISSUANCE AND REVISIONS	
DATE	DESCRIPTION
04/10/2020	SCHEMATIC DESIGN SET
06/19/2020	DESIGN DEVELOPMENT SET

KEY PLAN

SHEET INFORMATION

**PROGRESS DOCUMENTS
NOT FOR CONSTRUCTION**

These documents reflect progress and intent and may be subject to change, including additional detail. These are not final construction documents and shall not be used for final bidding or construction-related purposes.

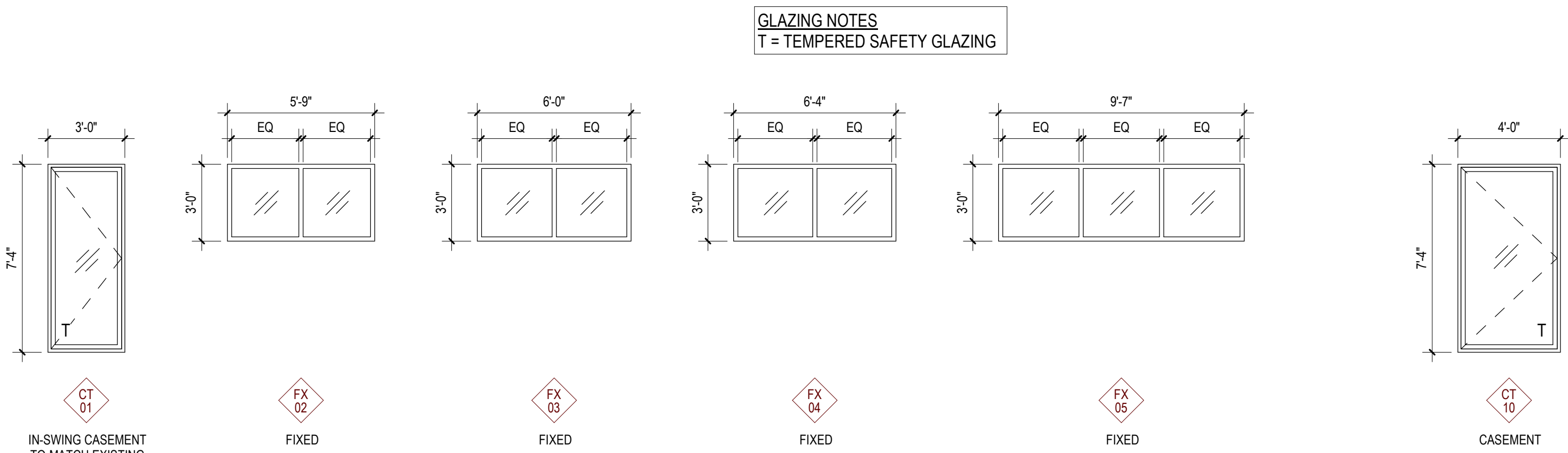
PROJECT MANAGER	MO
PROJECT NUMBER	20135

EXTERIOR
ELEVATIONS

A200

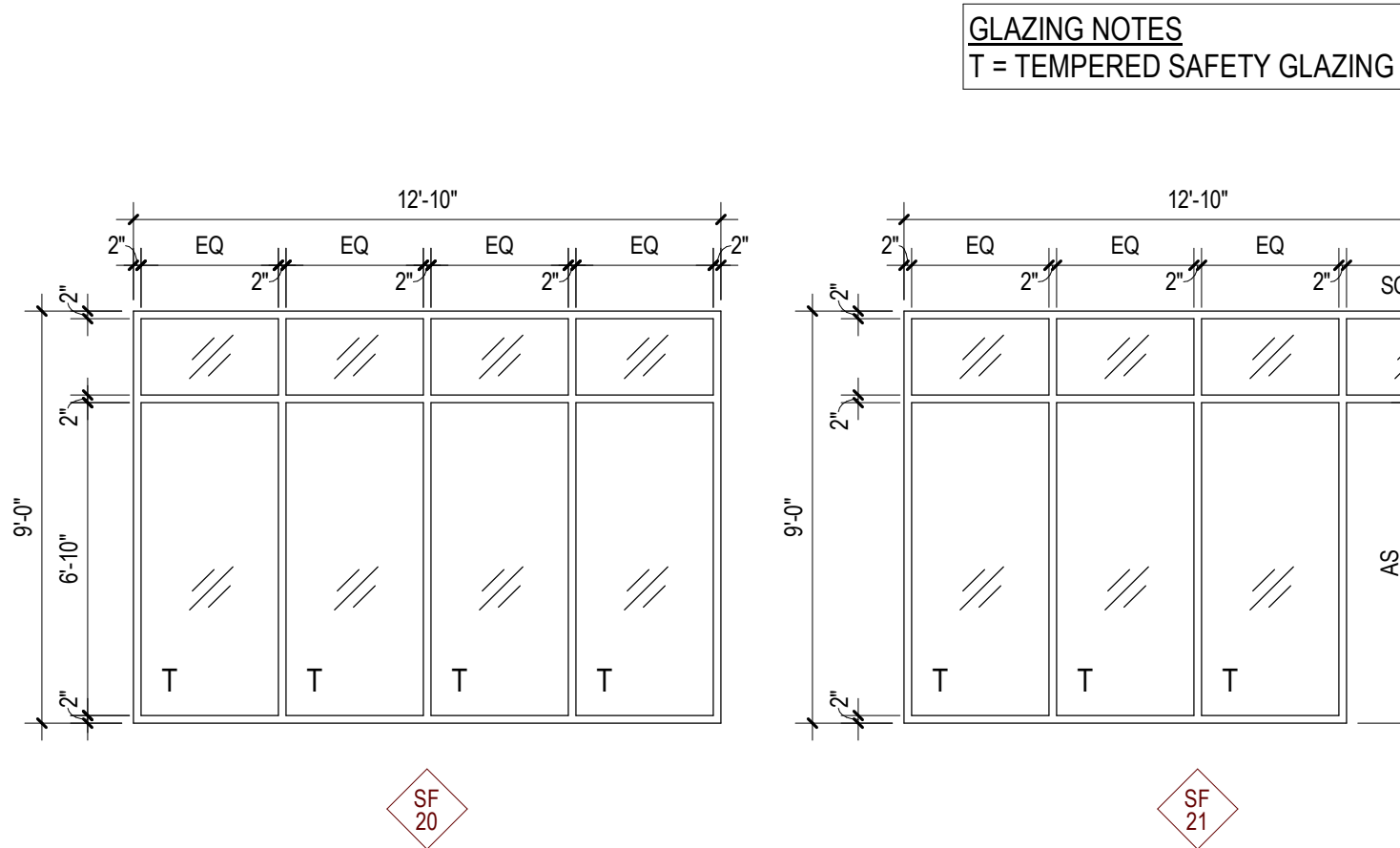
© Epstein Uhen Architects, Inc.

E



ALUMINUM (ALUM) WINDOWS
REFER TO ELEVATIONS FOR SWING DIRECTION

WINDOW TYPES
1/4" = 1'-0"



ALUMINUM (ALUM) STOREFRONT (SF) WINDOWS

STOREFRONT TYPES
1/4" = 1'-0"

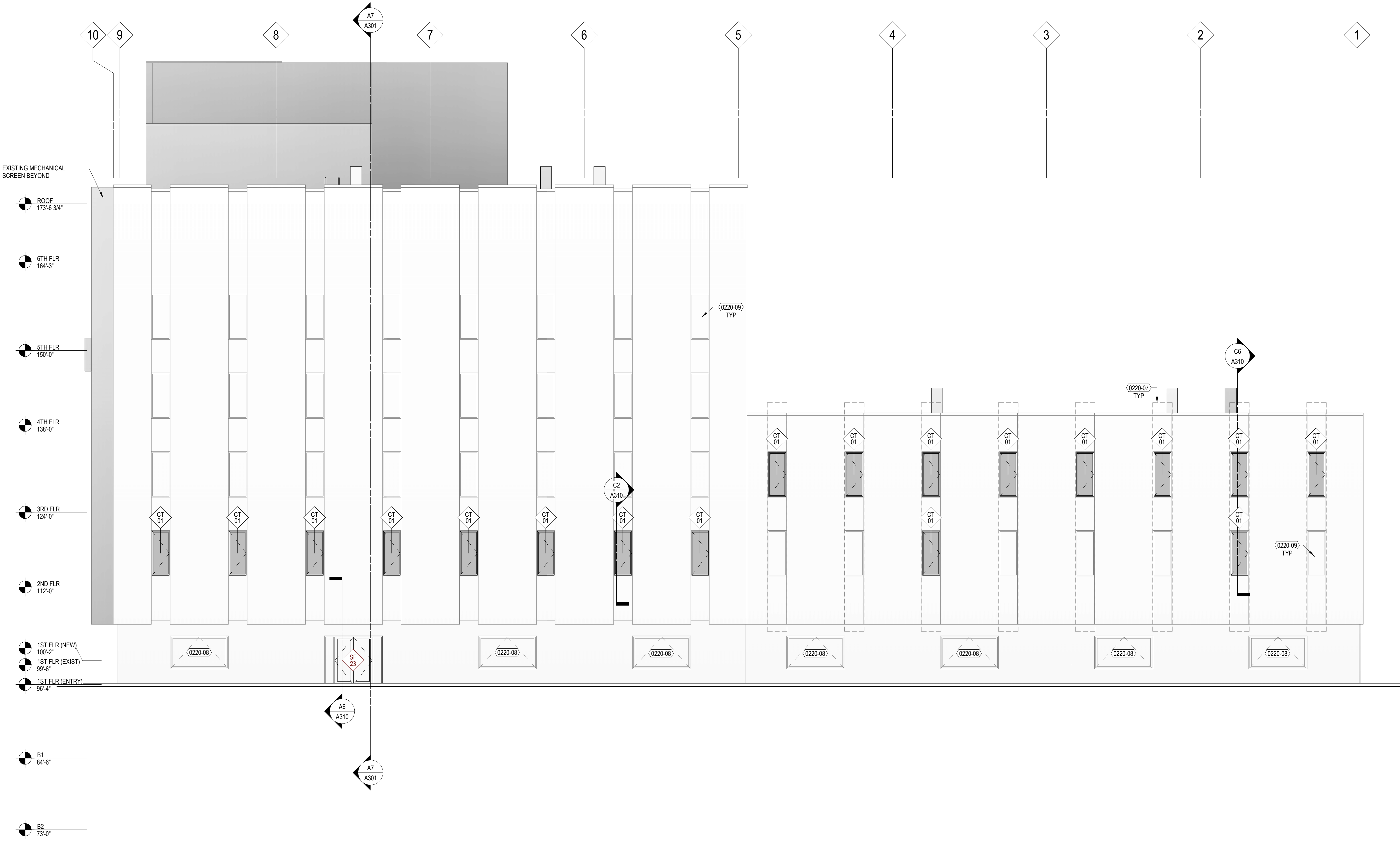
APPROVED
By Tim Askin - Milwaukee HPC at 3:15 pm, Oct 19, 2020

D

C

B

A



A3 EAST (THIRD ST) ELEVATION
1/8" = 1'-0"

KEYNOTES PER SHEET	
0220-07	EXISTING DECORATIVE METAL WINDOW SCREENS NOT SHOWN FOR CLARITY
0220-08	EXISTING DISPLAY WINDOWS TO REMAIN
0724-01	EXTERIOR INSULATION & FINISH SYSTEM



milwaukee	333 East Chicago Street Milwaukee, Wisconsin 53202 414.271.5350
madison	309 West Johnson Street, Suite 202 Madison, Wisconsin 53703 608.442.5350
des moines	699 Walnut Street, Suite 400 Des Moines, Iowa 50309 515.724.5840
denver	1899 Wynkoop Street, Suite 300 Denver, Colorado 80202 303.556.4500

PROJECT INFORMATION

JOURNAL SQUARE
REDEVELOPMENT -
1962

333 W. State St.
Milwaukee WI, 53203

ISSUANCE AND REVISIONS	
DATE	DESCRIPTION
04/10/2020	SCHEMATIC DESIGN SET
06/19/2020	DESIGN DEVELOPMENT SET

KEY PLAN

SHEET INFORMATION

**PROGRESS DOCUMENTS
NOT FOR CONSTRUCTION**

These documents reflect progress and intent and may be subject to change, including additional detail. These are not final construction documents and shall not be used for final bidding or construction-related purposes.

PROJECT MANAGER	MO
PROJECT NUMBER	20135

EXTERIOR
ELEVATIONS

A201

E

D

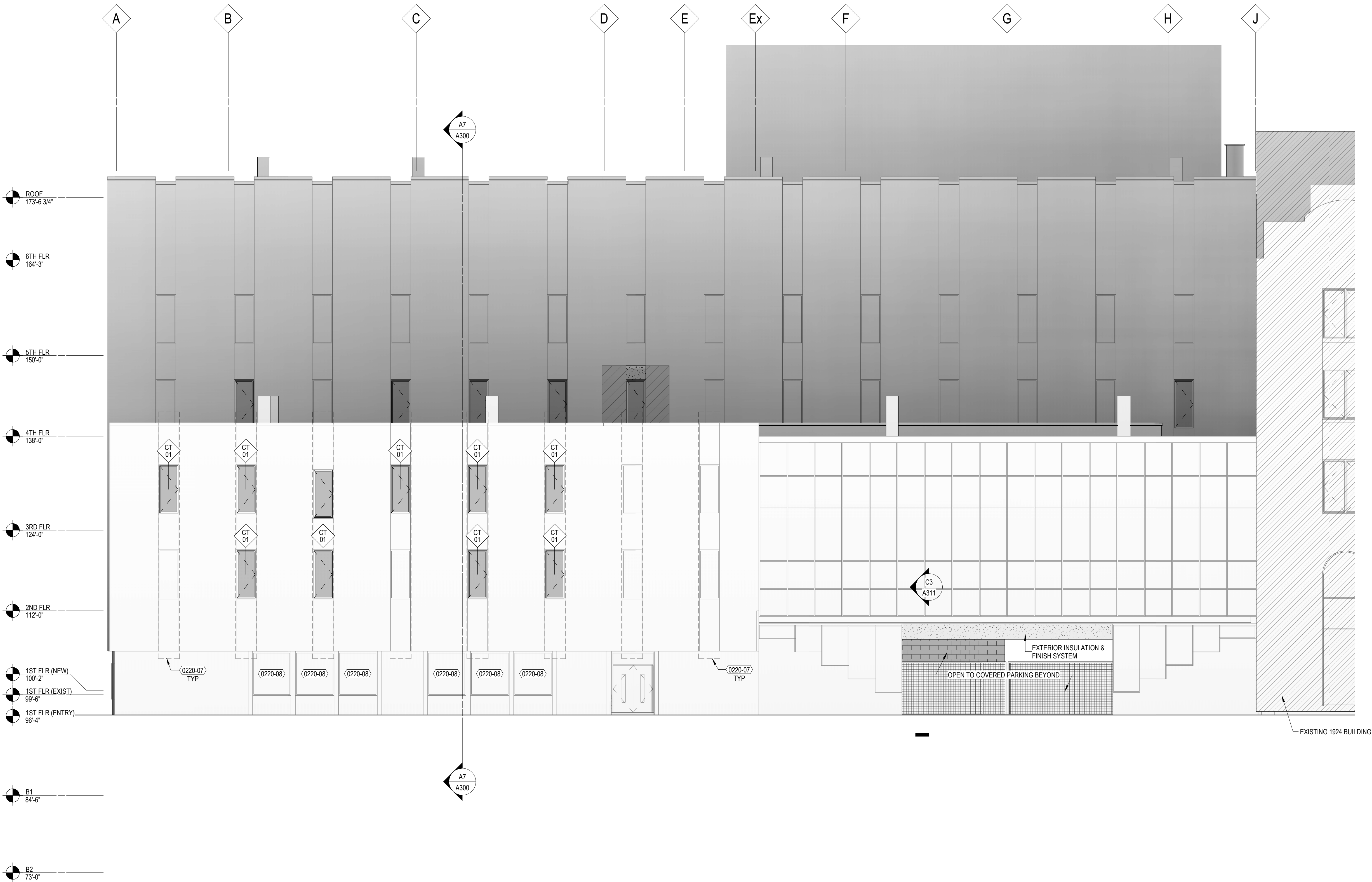
C

B

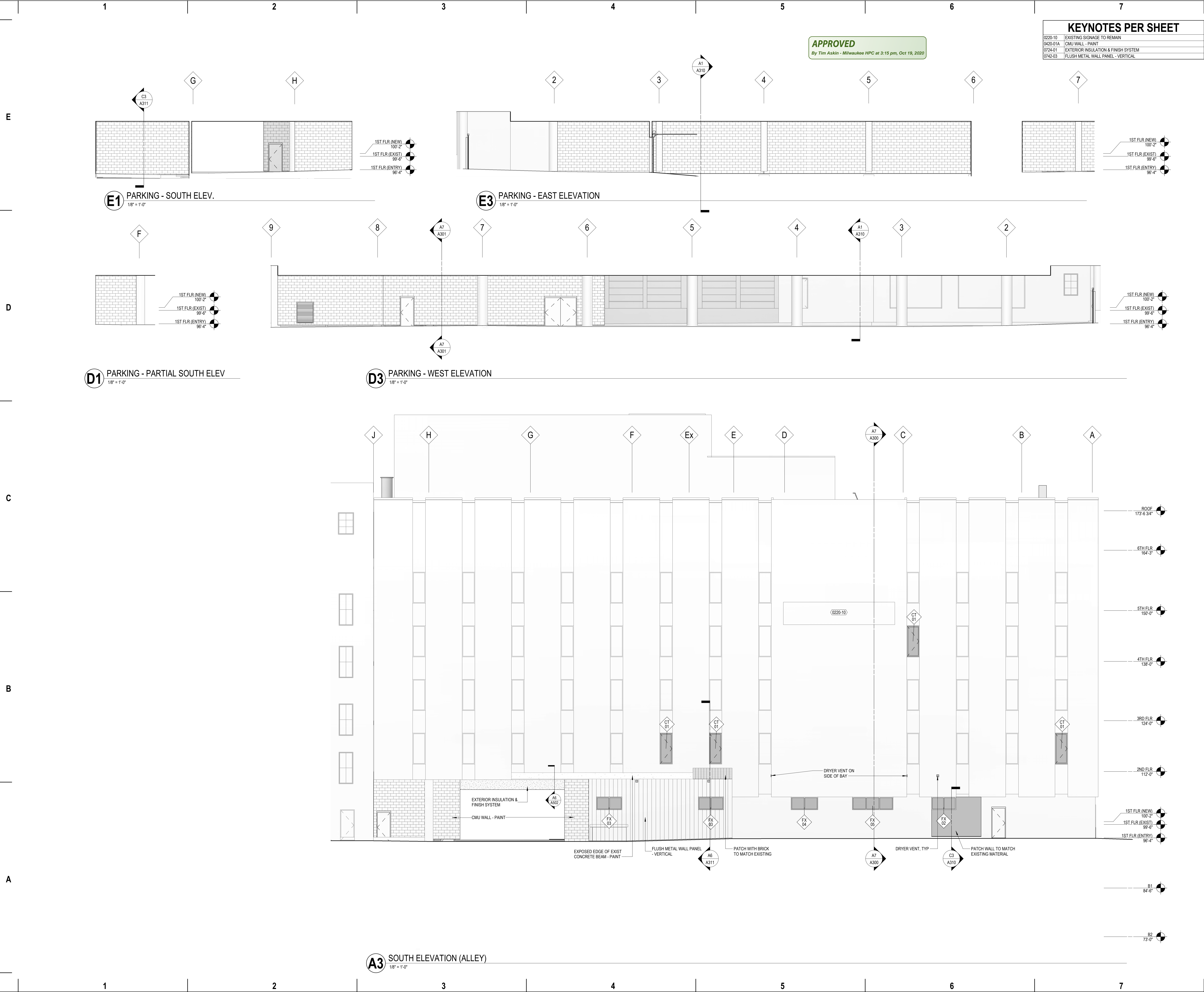
A

C

B



A7 NORTH (STATE ST) ELEVATION
1/8" = 1'-0"



milwaukee	333 East Chicago Street Milwaukee, Wisconsin 53202 414.271.5350
madison	309 West Johnson Street, Suite 202 Madison, Wisconsin 53703 608.442.5350
des moines	699 Walnut Street, Suite 400 Des Moines, Iowa 50309 515.724.5840
denver	1899 Wynkoop Street, Suite 300 Denver, Colorado 80202 303.556.4500

PROJECT INFORMATION

**JOURNAL SQUARE
REDEVELOPMENT -
1962**

**D 333 W. State St.
Milwaukee WI, 53203**

ISSUANCE AND REVISIONS	
DATE	DESCRIPTION
04/10/2020	SCHEMATIC DESIGN SET
06/19/2020	DESIGN DEVELOPMENT SET

KEY PLAN

SHEET INFORMATION

**PROGRESS DOCUMENTS
NOT FOR CONSTRUCTION**

These documents reflect progress and intent and may be subject to change, including additional detail. These are not final construction documents and shall not be used for final bidding or construction-related purposes.

PROJECT MANAGER MO
PROJECT NUMBER 20135

EXTERIOR
ELEVATIONS

A202

KEYNOTES PER SHEET	
0220-09	EXISTING WINDOWS TO REMAIN
0753-08	PREFINISHED METAL 2-PIECE COUNTERFLASHING
0762-05	PREFINISHED METAL DOWNSPOUT WISPLASH BLOCK



milwaukee	333 East Chicago Street Milwaukee, Wisconsin 53202 414.271.5350
madison	309 West Johnson Street, Suite 202 Madison, Wisconsin 53703 608.442.5350
des moines	699 Walnut Street, Suite 400 Des Moines, Iowa 50309 515.724.5840
denver	1899 Wynkoop Street, Suite 300 Denver, Colorado 80202 303.556.4500

PROJECT INFORMATION

JOURNAL SQUARE
REDEVELOPMENT -
1962

333 W. State St.
Milwaukee WI, 53203

ISSUANCE AND REVISIONS

DATE	DESCRIPTION
04/10/2020	SCHEMATIC DESIGN SET
06/19/2020	DESIGN DEVELOPMENT SET

KEY PLAN

SHEET INFORMATION

**PROGRESS DOCUMENTS
NOT FOR CONSTRUCTION**
These documents reflect progress and intent and may be subject to change, including additional detail. These are not final construction documents and shall not be used for final bidding or construction-related purposes.

PROJECT MANAGER	MO
PROJECT NUMBER	20135

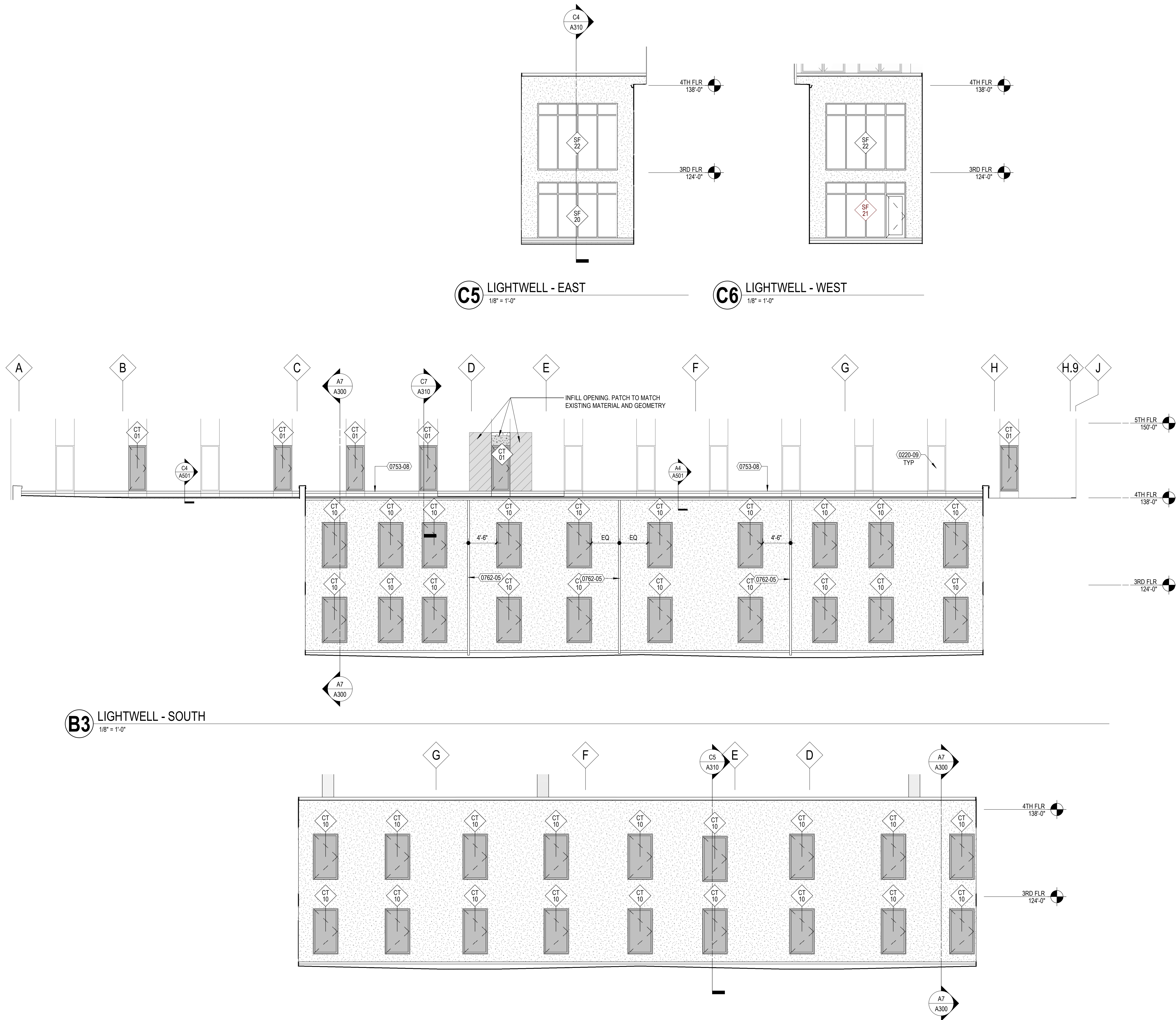
EXTERIOR
ELEVATIONS

A203

© Eppstein Uhen Architects, Inc.

APPROVED

By Tim Askin - Milwaukee HPC at 3:15 pm, Oct 19, 2020



1

2

3

4

5

6

7

KEYNOTES PER SHEET



milwaukee 333 East Chicago Street
Milwaukee, Wisconsin 53202
414.271.5350
madison 309 West Johnson Street, Suite 202
Madison, Wisconsin 53703
608.442.5350
des moines 699 Walnut Street, Suite 400
Des Moines, Iowa 50309
515.724.5840
denver 1899 Wynkoop Street, Suite 300
Denver, Colorado 80202
303.556.4500

PROJECT INFORMATION

JOURNAL SQUARE
REDEVELOPMENT -
1962

333 W. State St.
Milwaukee WI, 53203

ISSUANCE AND REVISIONS

DATE	DESCRIPTION
04/10/2020	SCHEMATIC DESIGN SET
06/19/2020	DESIGN DEVELOPMENT SET

KEY PLAN

SHEET INFORMATION

**PROGRESS DOCUMENTS
NOT FOR CONSTRUCTION**
These documents reflect progress and intent and may
be subject to change, including additional detail. These
are not final construction documents and shall not be
used for final bidding or construction-related purposes.

PROJECT MANAGER MO
PROJECT NUMBER 20135

3D SECTION VIEWS

A210

© Epstein Uhen Architects, Inc.

E

D

C

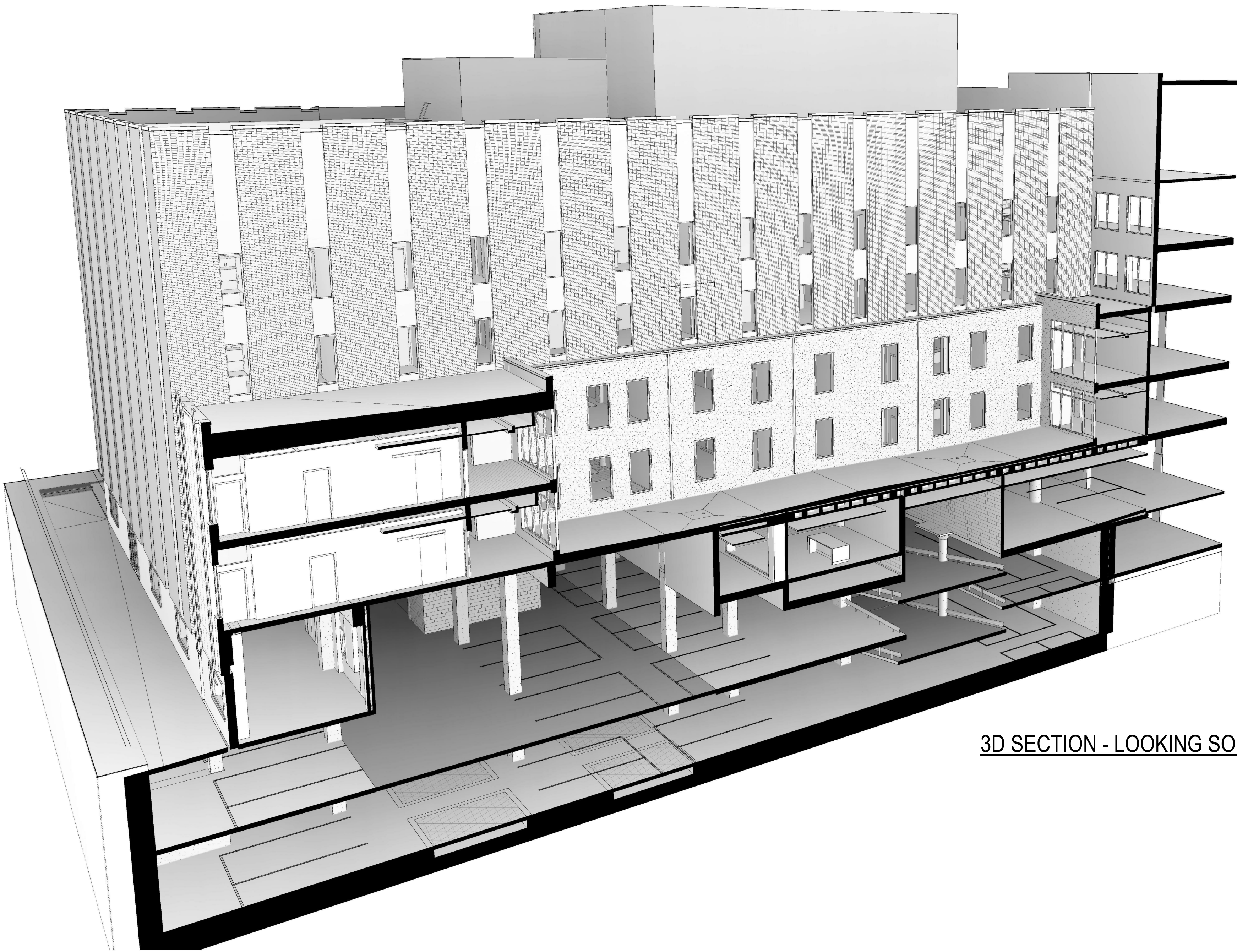
B

A

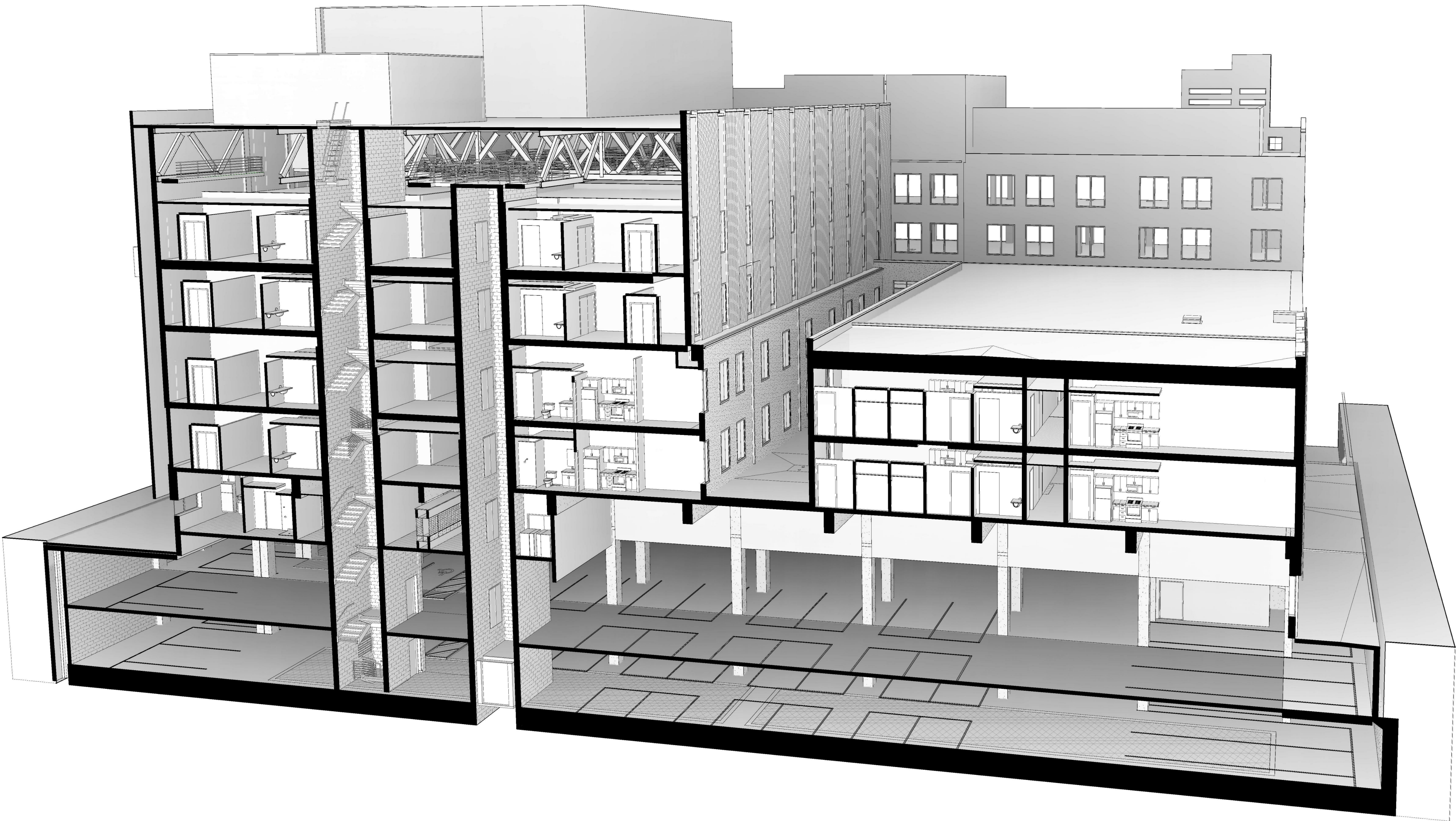
C

B

A



3D SECTION - LOOKING SOUTH



3D SECTION - LOOKING WEST