



# Certificate of Appropriateness

Milwaukee Historic Preservation Commission/200 E. Wells Street/Milwaukee, WI 53202/phone 414-286-5712/fax 414-286-3004

**Property** 1108 W. HISTORIC MITCHELL ST.  
**Description of work** Replace existing wall sign per attached design.  
**Date issued** 8/17/2020 PTS ID 115014 COA: replace wall sign

In accordance with the provisions of Section 320-21 (11) and (12) of the Milwaukee Code of Ordinances, the Milwaukee Historic Preservation Commission has issued a certificate of appropriateness for the work listed above. The work was found to be consistent with preservation guidelines. The following conditions apply to this certificate of appropriateness:

N/A

All work must be done in a craftsman-like manner, and must be completed within one year of the date this certificate was issued. Staff must approve any changes or additions to this certificate before work begins. Work that is not completed in accordance with this certificate may be subject to correction orders or citations.

If permits are required, you are responsible for obtaining them from the Milwaukee Development Center. If you have questions about permit requirements, please consult the Development Center's web site, [www.milwaukee.gov/build](http://www.milwaukee.gov/build), or call (414) 286-8210.

City of Milwaukee Historic Preservation Staff

Copies to: Development Center, Ald. Jose Perez, Contractor

EXISTING PHOTO - A

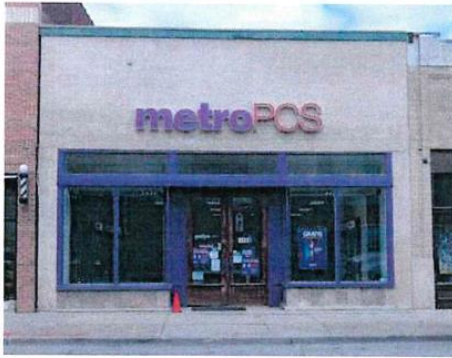
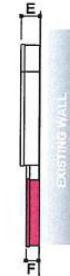
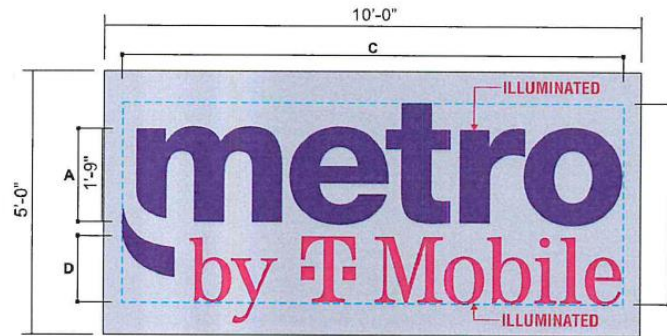


PHOTO ENHANCEMENT - A



# **Illuminated Stacked Channel Letters Flush-Mounted ON CUSTOM BACKER PANEL Side View**

## **SPECIFICATIONS:**

TOGGLE SWITCH/PHOTOCELL/TIMER IS REQUIRED.

### **"metro" and "comma":**

FACES:..... .118" OPTIX 2406LD DIFFUSER ACRYLIC W/ PERFORATED MIRATEC FILM #47902-1 DEEP PURPLE OR ARLON DEEP PURPLE DUAL COLOR FILM #5597-0559048085597  
 RETURNS:..... .040" X 5.3" ALUMINUM COIL PAINTED WHITE  
 BACKS:..... .063" ALUMINUM  
 TRIM CAP:..... 1" WHITE JEWELITE  
 ILLUMINATION:.. SLOAN PRISM 6500K OR PRINCIPAL LEDS

### **"by T-Mobile":**

FACES:..... .118" OPTIX 2406LD DIFFUSER ACRYLIC W/ TRANSLUCENT MIRATEC FILM #30532-1 MAGENTA OR ARLON TRANSLUCENT MAGENTA FILM #5450-0557048155450  
 RETURNS:..... .040" X 3.5" ALUMINUM COIL PAINTED MATTHEWS MP 86055 MAGENTA  
 BACKS:..... .063" ALUMINUM  
 TRIM CAP:..... 1" JEWELITE PAINTED MATTHEWS MP 86055 MAGENTA  
 ILLUMINATION:.. SLOAN PRISM 6500K OR PRINCIPAL LEDS

1/8" ALUMINUM BACKER PANEL 5' H X 10' W  
 PAINTED SW-6386

SIGN MODEL	A	B	C	D	E	F	SQ. FT.
MBTM-CLP-15	1'-3"	2'-8 1/2"	6'-8 1/4"	10 1/4"	5"	3"	18.08
MBTM-CLP-18	1'-6"	3'-3"	8'-0 1/4"	1'-0 1/4"	5"	3"	26.06
MBTM-CLP-21	1'-9"	3'-9 1/4"	9'-4 1/4"	1'-3"	5"	3"	35.56
MBTM-CLP-24	2'-0"	4'-4 1/4"	10'-8 1/4"	1'-5 1/4"	5"	3"	46.42
MBTM-CLP-27	2'-3"	4'-10 1/4"	12'-0 1/4"	1'-7 1/4"	5"	3"	58.77
MBTM-CLP-30	2'-6"	5'-5 1/4"	13'-4 1/4"	1'-9 1/4"	5"	3"	72.53
MBTM-CLP-36	3'-0"	6'-6 1/4"	16'-0 1/4"	2'-1 1/4"	5"	3"	104.37
MBTM-CLP-42	3'-6"	7'-7 1/4"	18'-8 1/4"	2'-6"	5"	3"	142.06

## **COLOR SCHEDULE**

- Paint: White Returns & Trim Cap
- Miratec Dual Color Film #47902-1 Deep Purple Perforated Vinyl or Arlon Deep Purple Dual Color Film #5597 - 0559048085597
- Translucent Miratec Film #30532-1 Magenta Printed On White Vinyl or Arlon Translucent Magenta Film #5450-0557048155450
- Paint: Matthews MP 86055 Magenta (Returns & Trim Cap)

