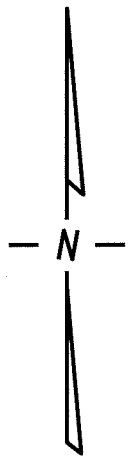
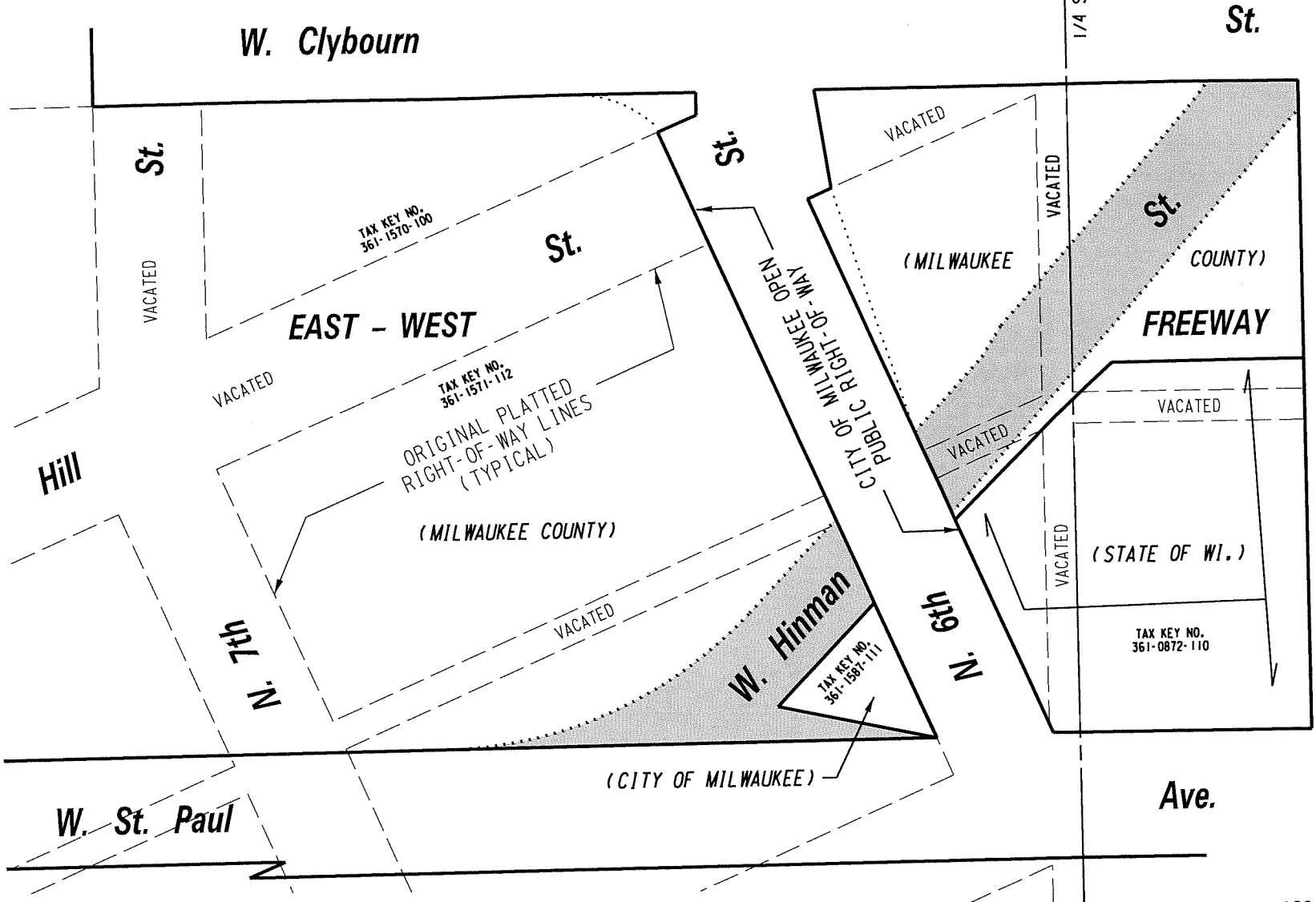


S.W. 1/4 SEC. 29, T.7N., R.22E.

398

397

S.E. 1/4 SEC. 29, T.7N., R.22E.



**FILE NO.**  
**INFRASTRUCTURE SERVICES DIVISION**  
 MILWAUKEE, WISCONSIN

ASSIGNED TO: W. FUCHS  
 DRAWN BY: W.F.  
 PROJECT/GRANT NO.: WK52337367  
 APPROVED BY:

CH'K'D. BY: W. FUCHS  
 DATE: MAY 8, 2020  
 SCALE: 1" = 100'

*[Signature]*  
 CENTRAL DRAFTING & RECORDS MANAGER

*[Signature]*  
 CITY ENGINEER