



CCF 181041

1038 South 6th Street

4/21/2020

Close up of pylon sign, the base of which is partially in the public right-of-way.



CCF 181041

1038 South 6th Street

4/21/2020

Looking east from 6th Street at east-west alley north of subject premises. Conduit crosses alley at trench cut east of the two bollards.

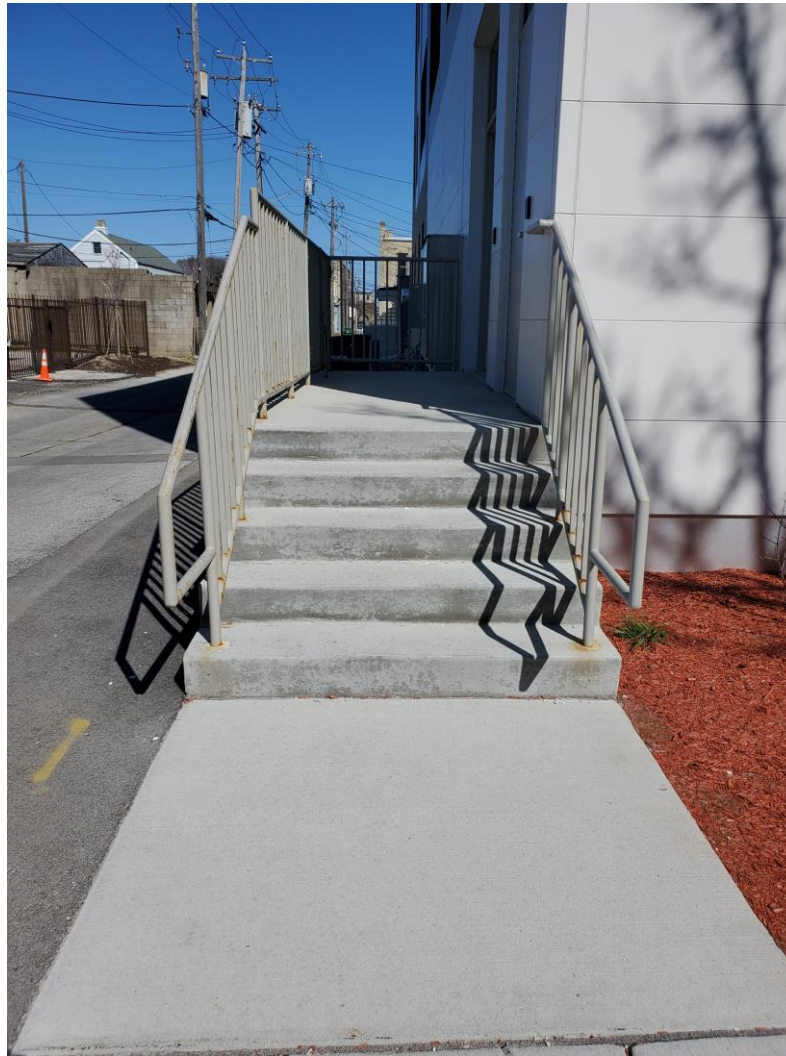


CCF 181041

1038 South 6th Street

4/21/2020

Looking south towards Washington Street at east sidewalk area of 6th Street.



CCF 181041

1038 South 6th Street

4/21/2020

Close up of steps with handrails projecting into South 6th Street.