



Certificate of Appropriateness

Milwaukee Historic Preservation Commission/200 E. Wells Street/Milwaukee, WI 53202/phone 414-286-5712/fax 414-286-3004

Property	133 W. PITTSBURGH AV. (2 nd Street side)	S. 2 nd Street
Description of work	Applicant proposes to modify the existing storefront to create two separate entrance vestibules. The existing anodized storefront is 12'-10". The redesigned storefront will feature a 3'-0" door on the south side for access to the upper space and a new 3'-6" door on the north side of the storefront for entry into the lower retail space that will be remodeled. The existing storefront has a 90 degree corner that will be removed to create an additional entrance that is flush with the existing door plane. All exterior finishes and materials will match the existing adjacent finishes.	
Date issued	12/12/2019	PTS ID 114887 COA: new storefront

In accordance with the provisions of Section 320-21 (11) and (12) of the Milwaukee Code of Ordinances, the Milwaukee Historic Preservation Commission has issued a certificate of appropriateness for the work listed above. The work was found to be consistent with preservation guidelines. The following conditions apply to this certificate of appropriateness: N/A

All work must be done in a craftsman-like manner, and must be completed within one year of the date this certificate was issued. Staff must approve any changes or additions to this certificate before work begins. Work that is not completed in accordance with this certificate may be subject to correction orders or citations. If you require technical assistance, please contact Historic Preservation staff as follows: Phone: (414) 286-5712 E-mail: hpc@milwaukee.gov.

If permits are required, you are responsible for obtaining them from the Milwaukee Development Center. If you have questions about permit requirements, please consult the Development Center's web site, www.milwaukee.gov/build, or call (414) 286-8210.

City of Milwaukee Historic Preservation Staff

Copies to: Development Center, Ald. Jose Perez, Contractor

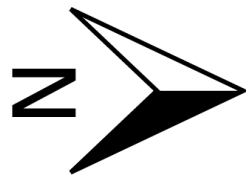
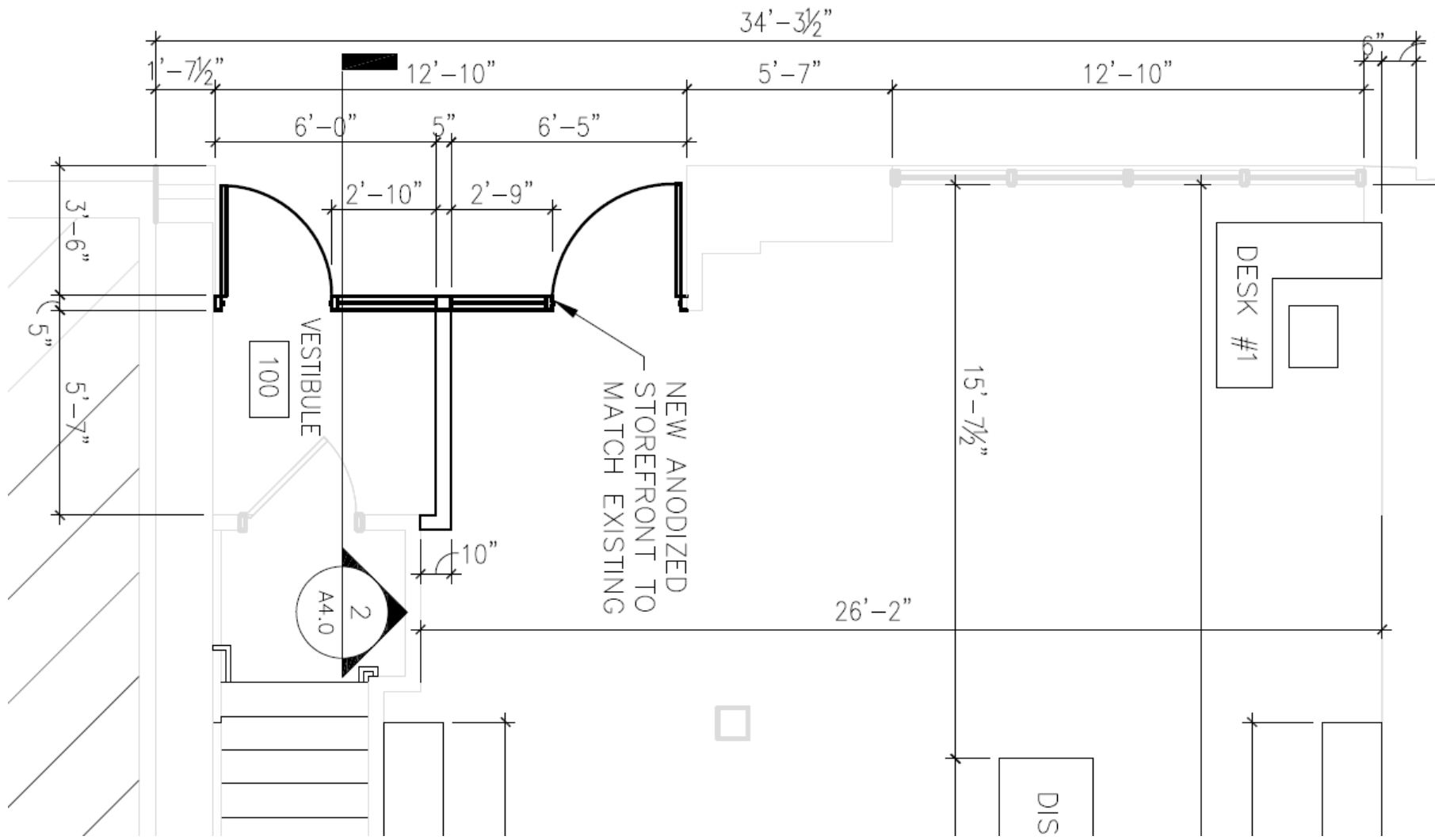


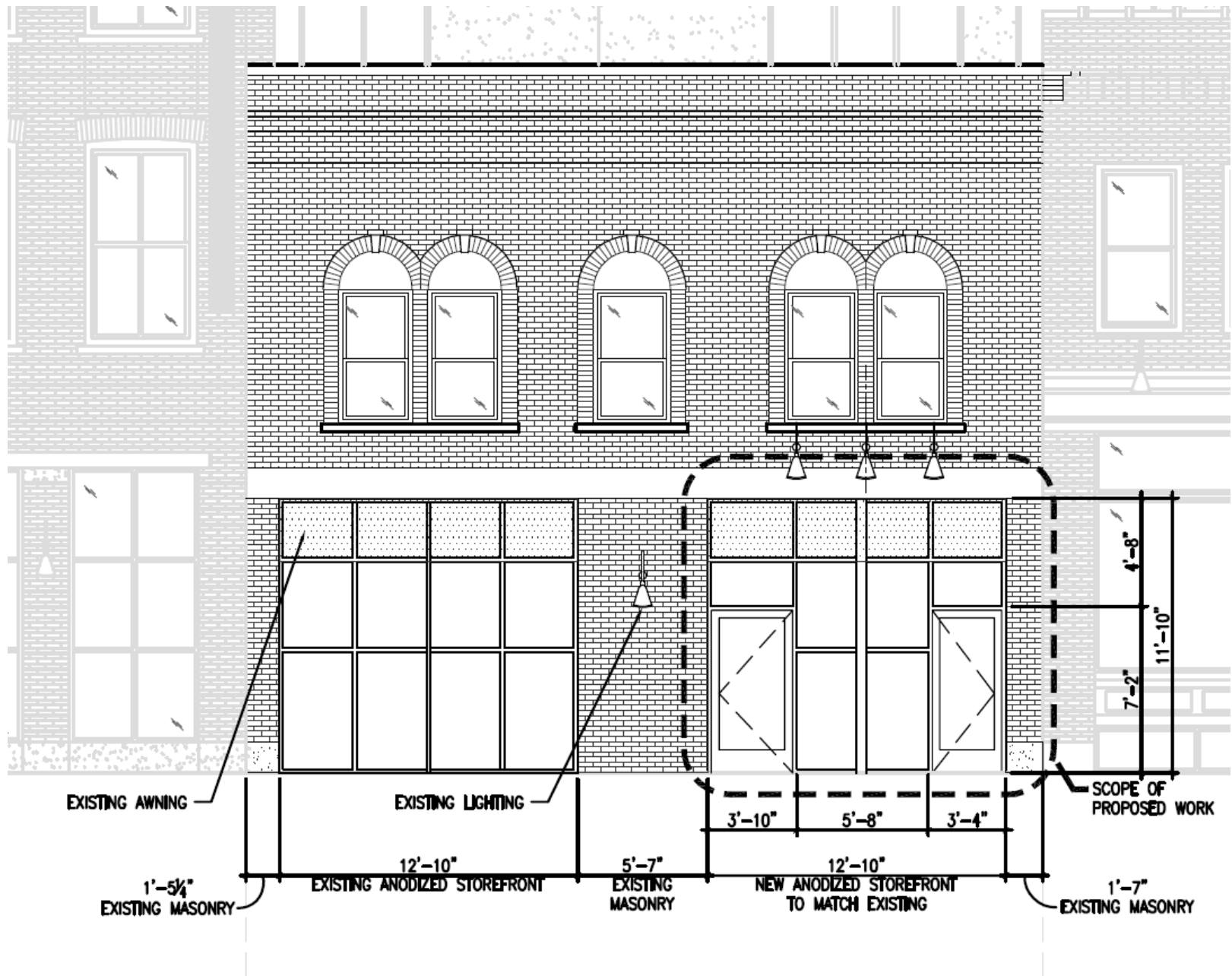
EXTERIOR ELEVATION VIEW LOOKING EAST

Affected area



EXTERIOR VIEW LOOKING @ ENTRY





Approved Elevation