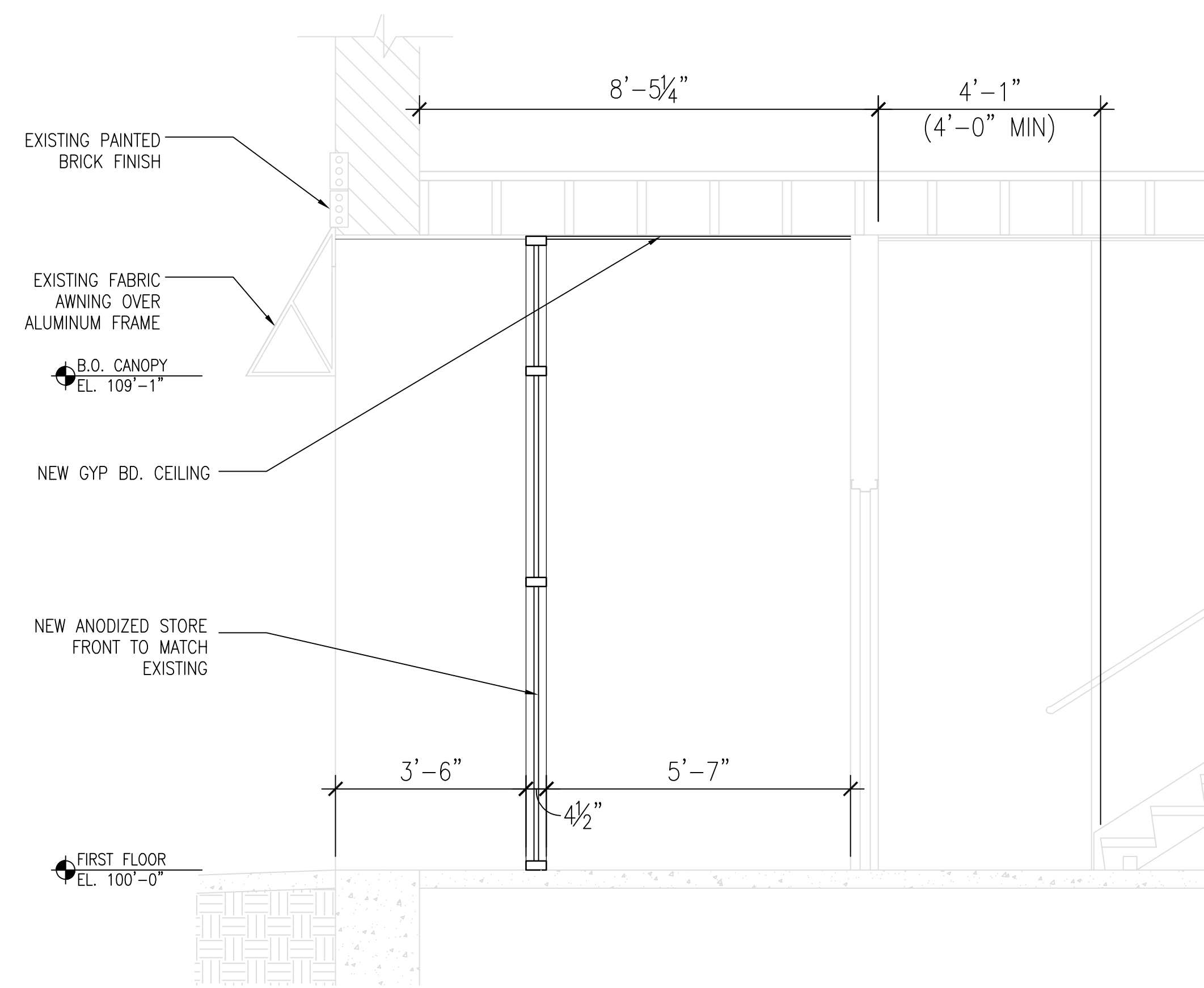


3 ENLARGED STOREFRONT ELEVATION
1/4" = 1'-0"



3 VESTIBULE WALL SECTION
1/2" = 1'-0"



1 2ND STREET WEST ELEVATION
1/8" = 1'-0"

Project:
The Artisan at Walker's Point - BBJ Linen Tenant Buildout

Location:
133 W. Pittsburgh Ave.
Milwaukee, WI 53204

Sheet:
WEST ELEVATION

Scale:
AS NOTED

Revisions:

No.	Date	Description
1	11/12/19	HISTORIC REVIEW SUBMITTAL

Date:
11/12/19

Project No.:
190099.00

Sheet No.: