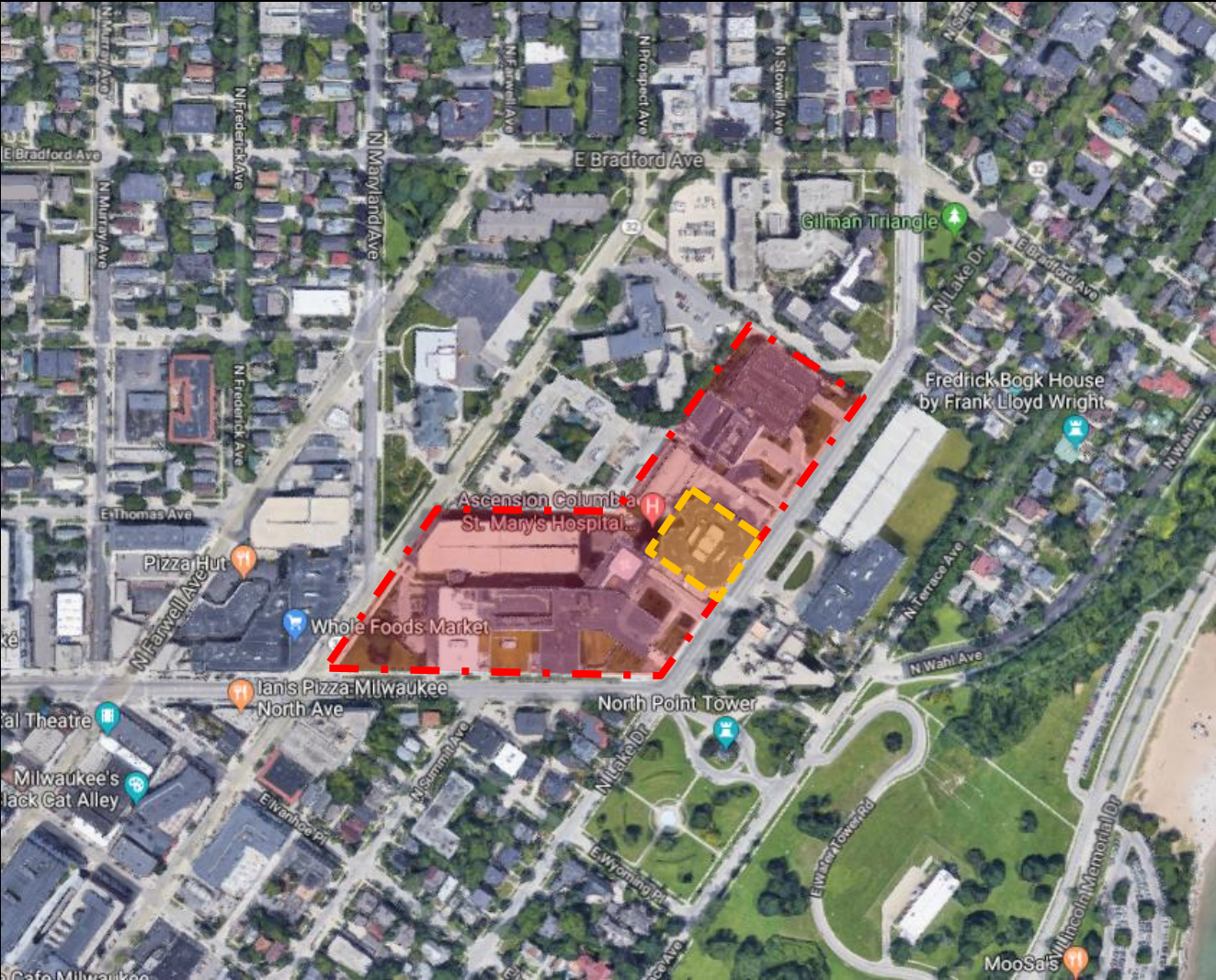


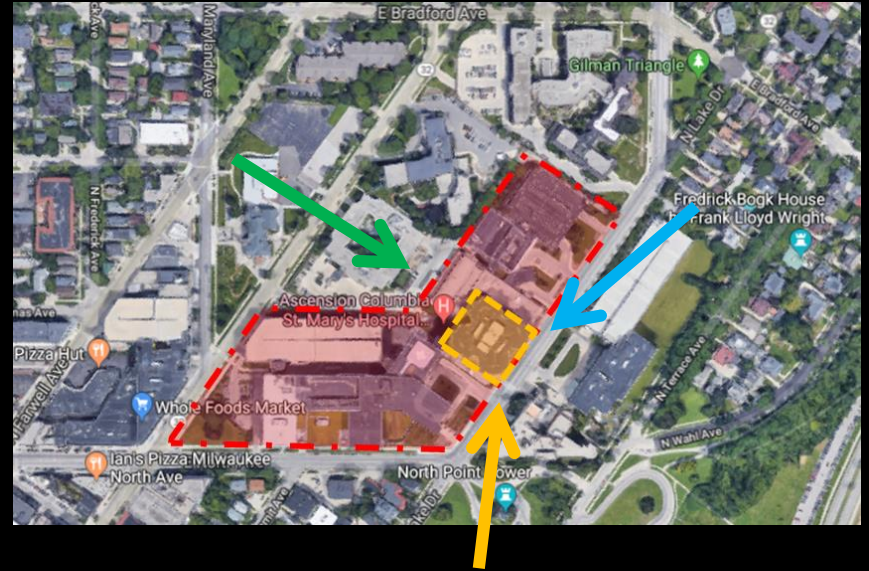
File No. 190406. Substitute resolution relating to a Minor Modification to the Detailed Planned Development known as Columbia St. Mary's Main Hospital to allow new exterior windows on the building located at 2323 North Lake Drive, on the west side of North Lake Drive, north of East North Avenue, in the 3rd Aldermanic District.



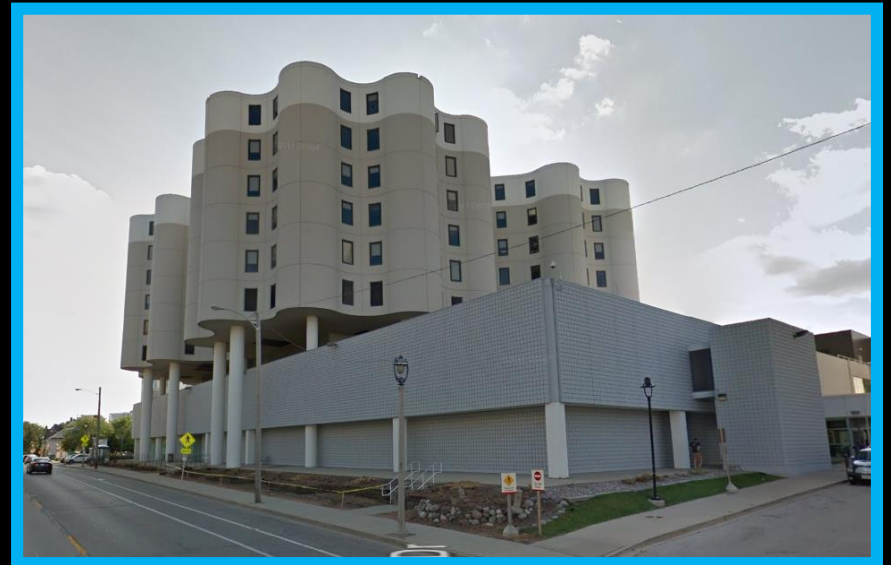
File No. 190406. Site Context Photos



View from North Lake Drive looking north



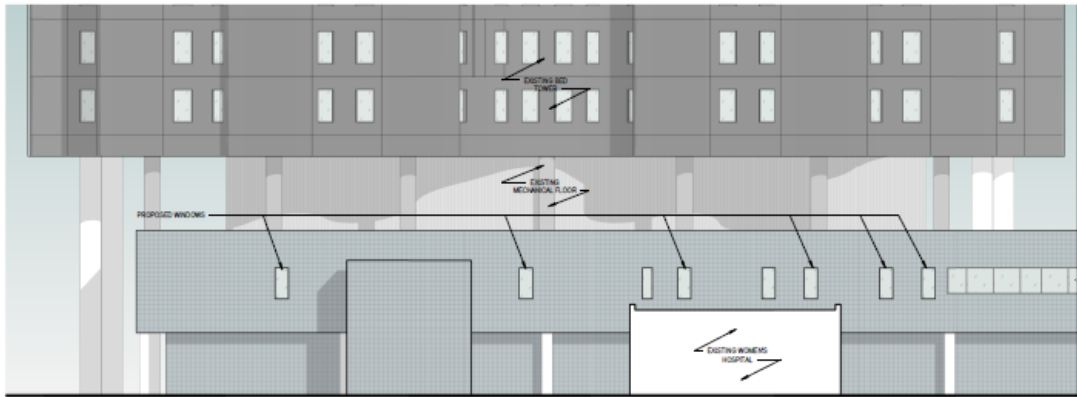
Aerial looking south-east



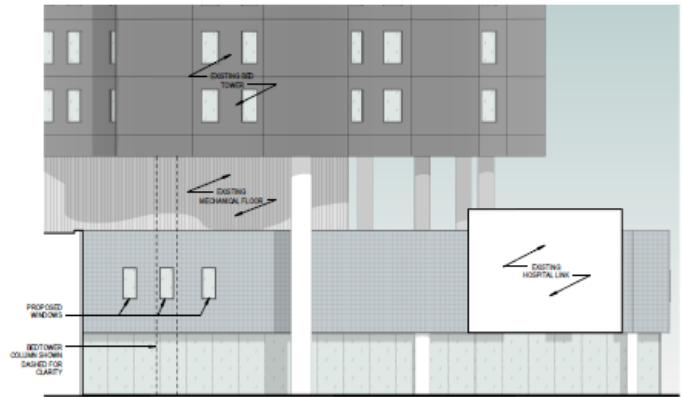
View from North Lake Drive looking south-west



1 PARTIAL EAST PRESENTATION ELEVATION
3/8" = 1'-0"



2 PARTIAL NORTH PRESENTATION ELEVATION
3/8" = 1'-0"



3 PARTIAL WEST PRESENTATION ELEVATION - INNER
3/8" = 1'-0"

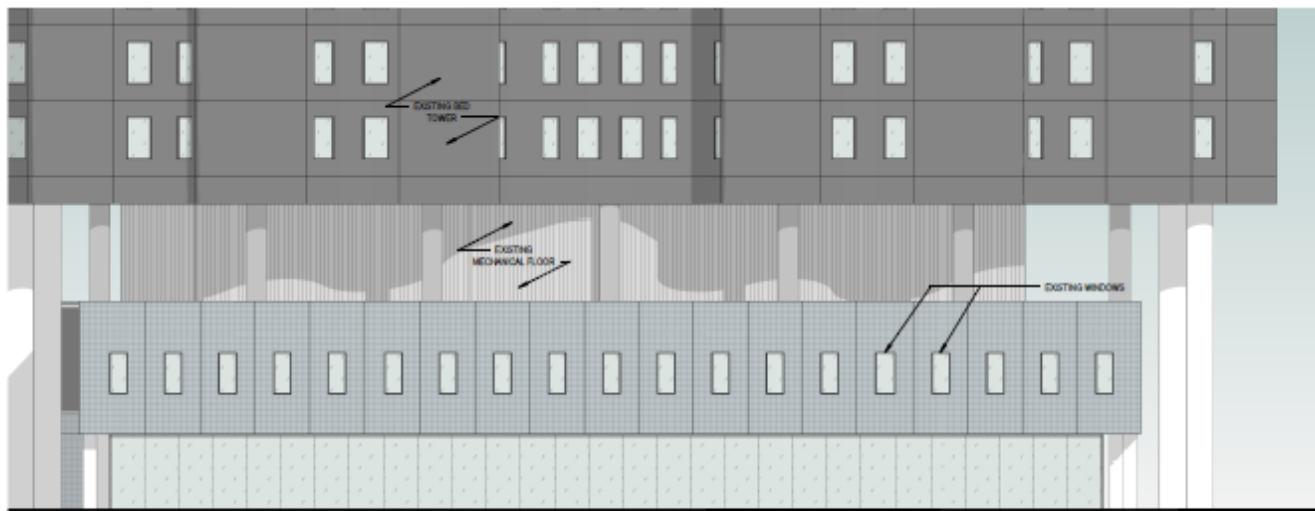


4 PARTIAL WEST PRESENTATION ELEVATION
3/8" = 1'-0"



COLUMBIA ST. MARY'S CAMPUS - LOOKING SOUTHEAST
WEST ELEVATION IS NOT VISIBLE FROM PROSPECT AVENUE

EXISTING GLASS BLOCK TO BE REMOVED AND REPLACED WITH ALUMINUM CURTAIN WALL WITH ONE WINDOW PER ROOM AND INSULATED METAL PANELS WHERE THERE ARE NO WINDOWS.



5 PARTIAL SOUTH PRESENTATION ELEVATION
3/8" = 1'-0"