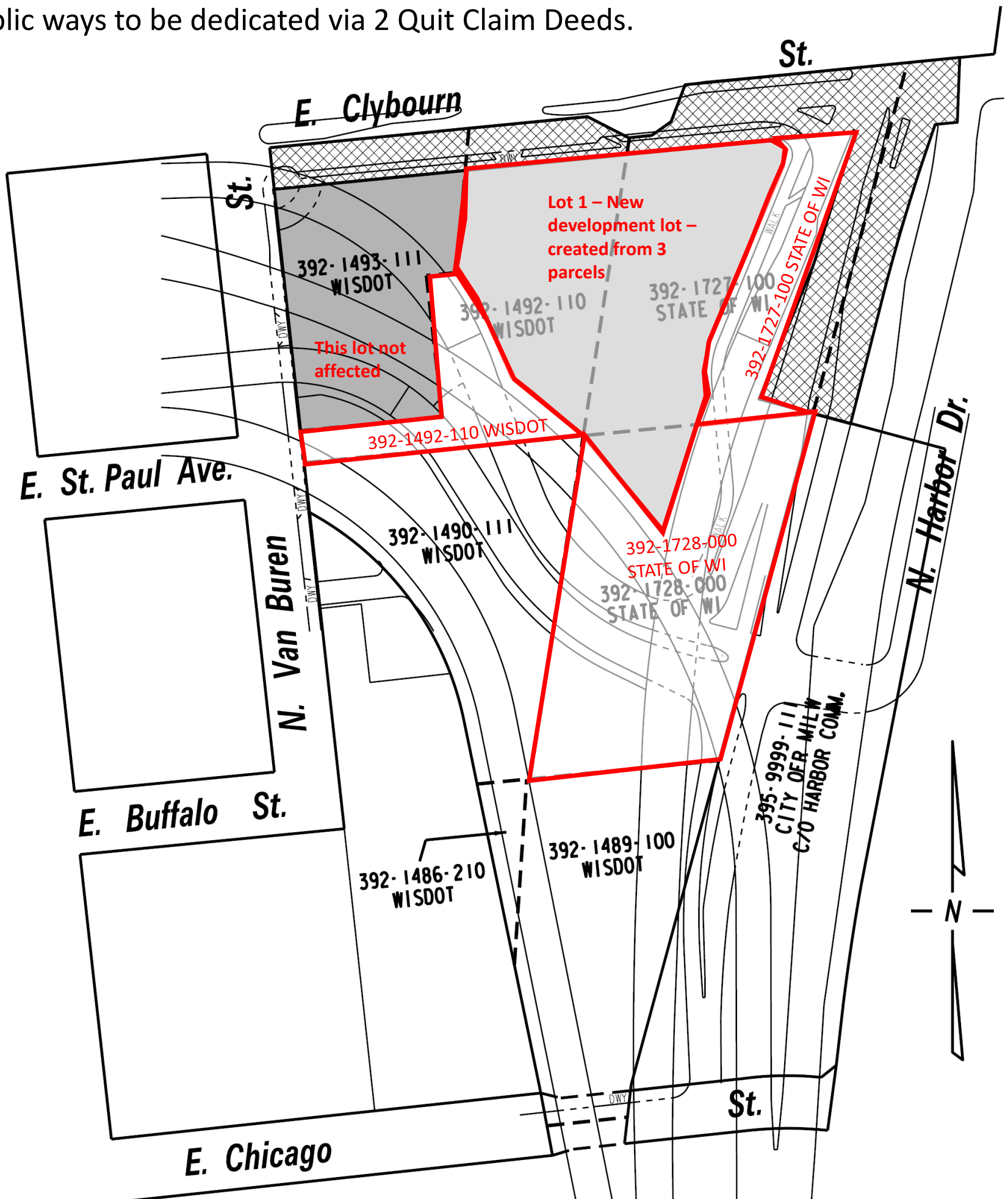
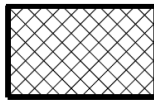



CSM area to create development lot out of 3 parcels.
 Public ways to be dedicated via 2 Quit Claim Deeds.



 LANDS TO BE ACQUIRED AND DEDICATED FOR PUBLIC STREET PURPOSES BY THE CITY OF MILWAUKEE

 PROPOSED CSM AS OF 8-24-2018

 TAX PARCEL BOUNDARIES PER THE ASSESSOR OFFICE CITY OF MILWAUKEE

DATE: SEPT. 14, 2018

W:\eng\row\Lakefront\Clybourn CSM\Clybourn CSM.dgn

CSM PROPOSAL THAT REFLECTS STATE RFP