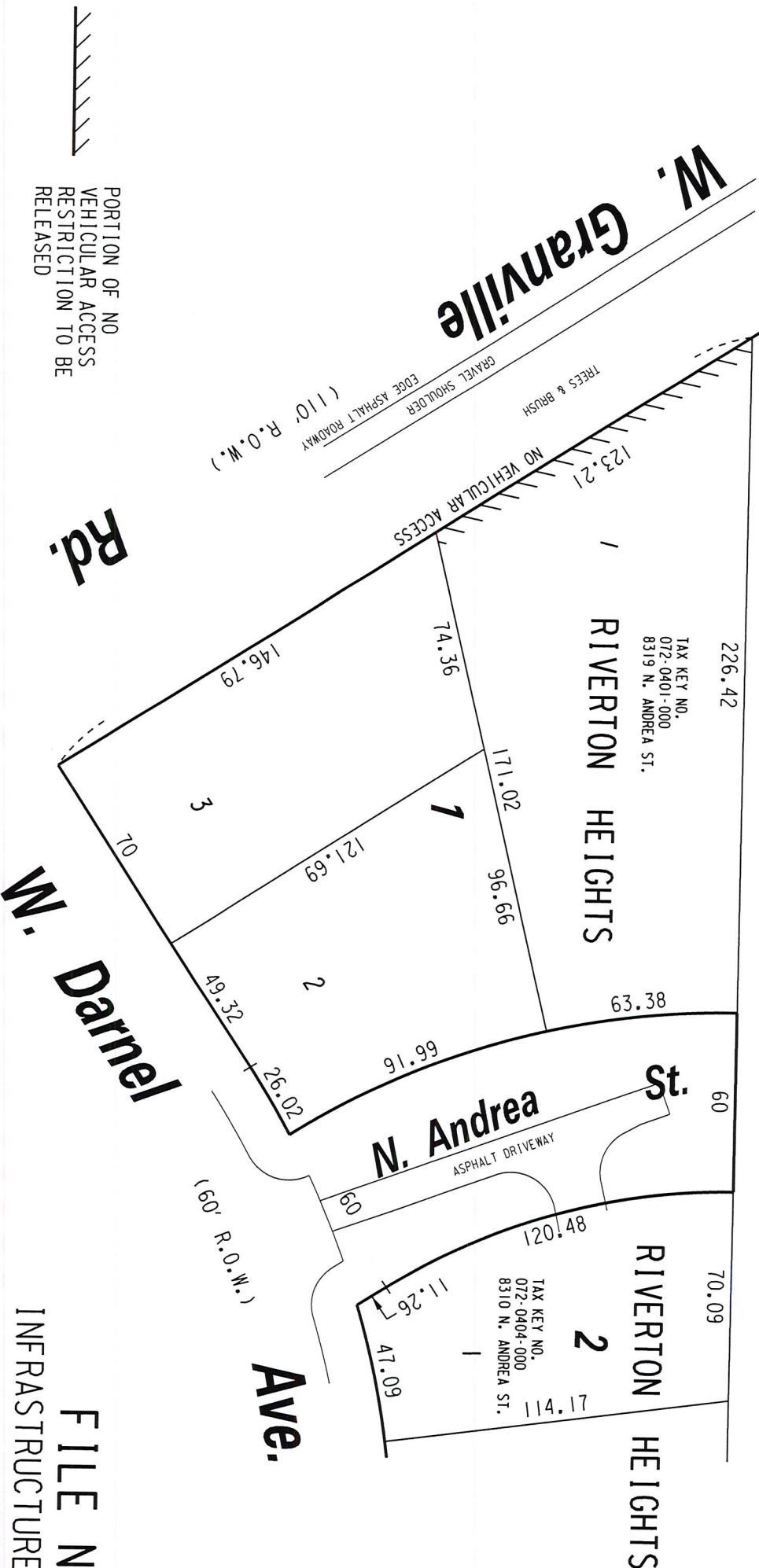
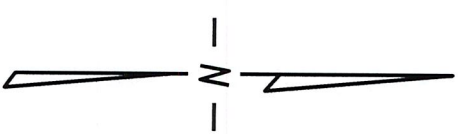


LANDS

S.W. 1/4 SEC. 8, T.8N., R.21E.

73



PORTION OF NO
VEHICULAR ACCESS
RESTRICTION TO BE
RELEASED

FILE NO.
INFRASTRUCTURE SERVICES DIVISION

MILWAUKEE, WISCONSIN

ASSIGNED TO: W. FUCHS
DRAWN BY: W.F.
PROJECT/GRANT NO.: WK52360089
APPROVED BY:
CH'K'D. BY: W. FUCHS
DATE: FEB. 26, 2017
SCALE: 1" = 50'

CENTRAL DRAFTING & RECORDS MANAGER
CITY ENGINEER