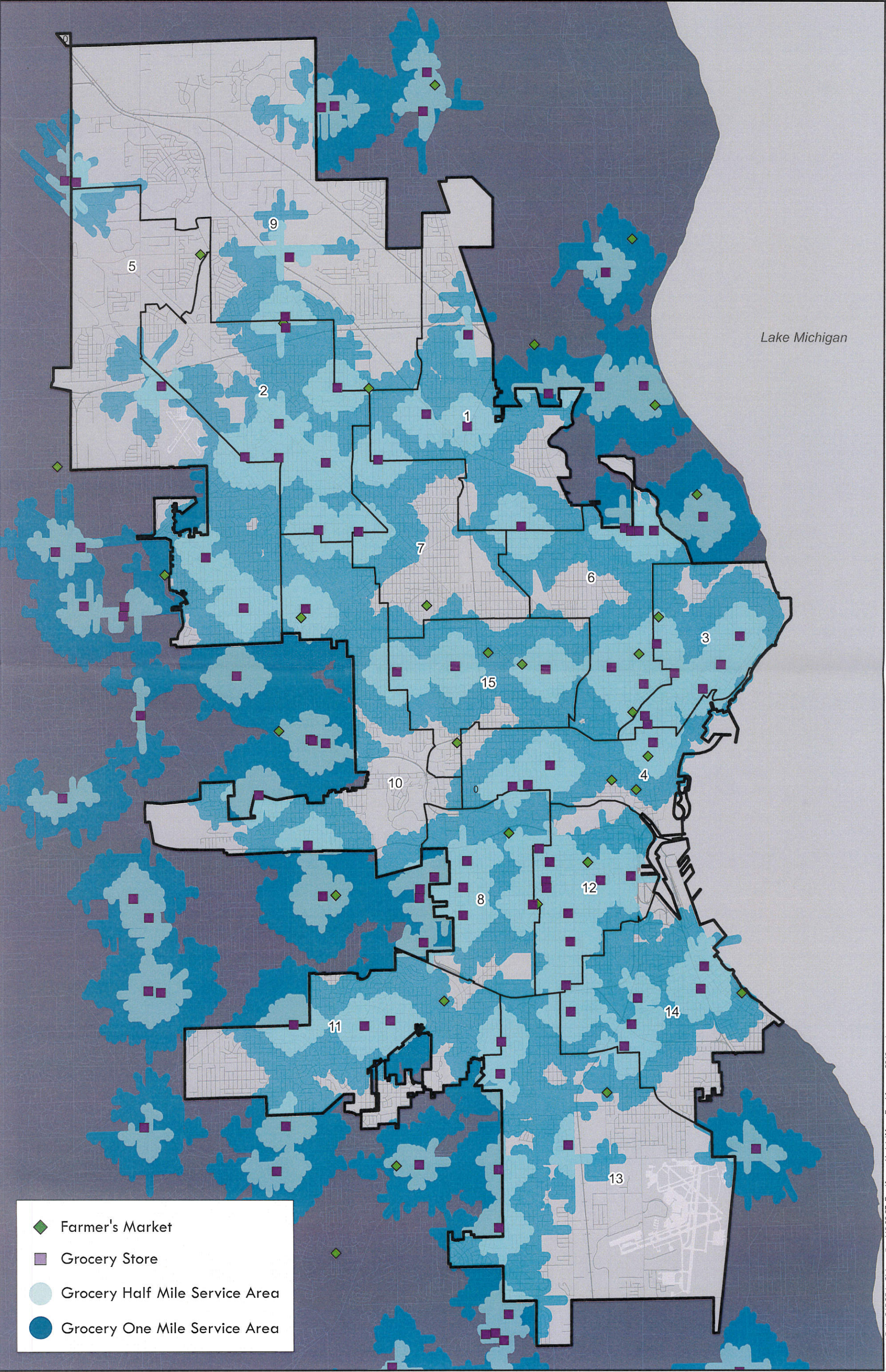
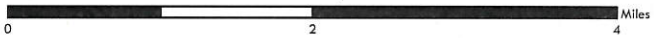


**FOOD ACCESS MAPPING**  
GROCERY STORE SERVICE AREAS, 2019

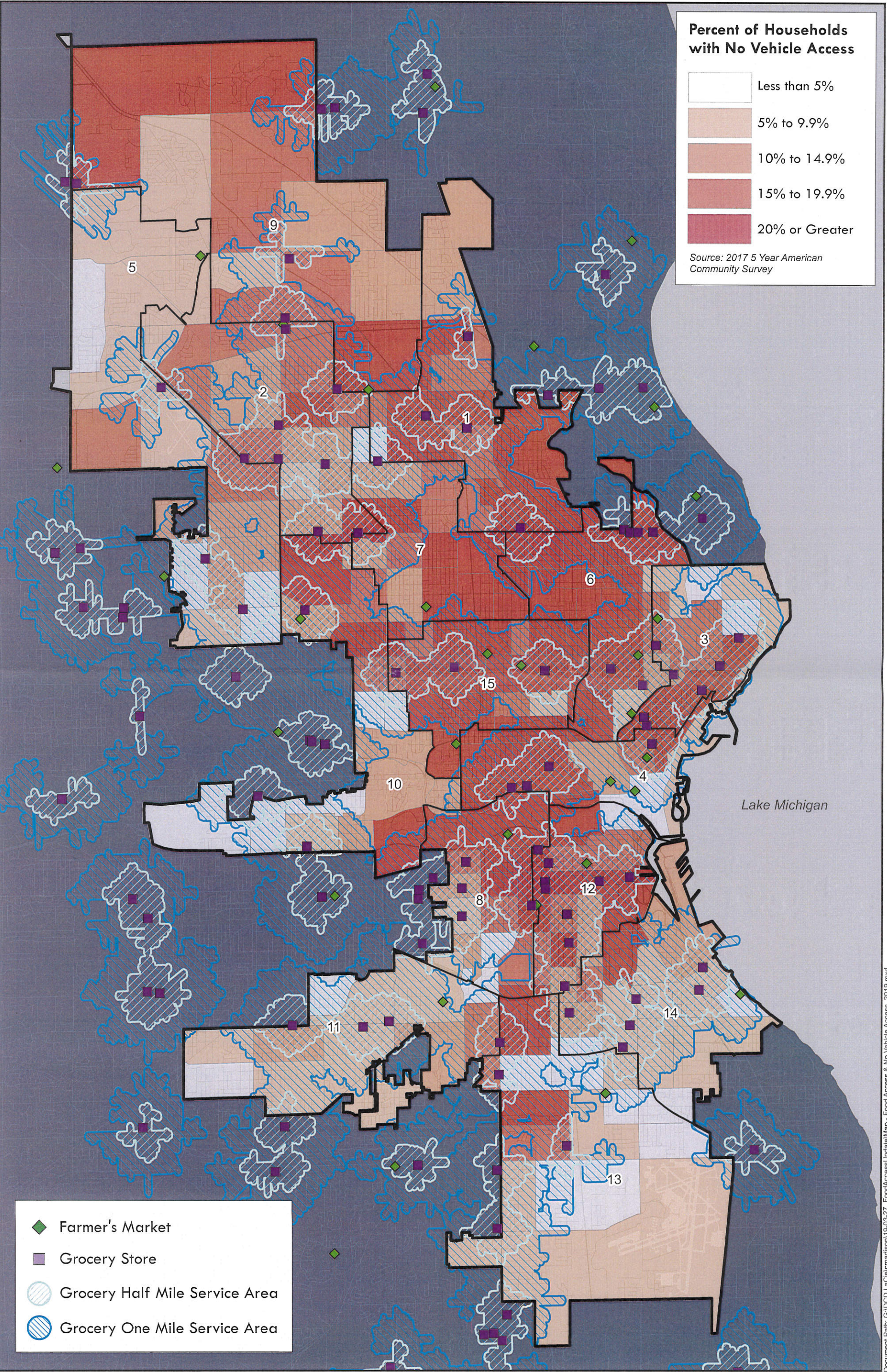
Prepared by the Department of City Development Planning Division, 4/5/2019  
Source: City of Milwaukee Information Technology Management Division; Planning Division





**FOOD ACCESS MAPPING**  
**GROCERY STORE SERVICE AREAS**  
**AND HOUSEHOLD VEHICLE ACCESS, 2019**

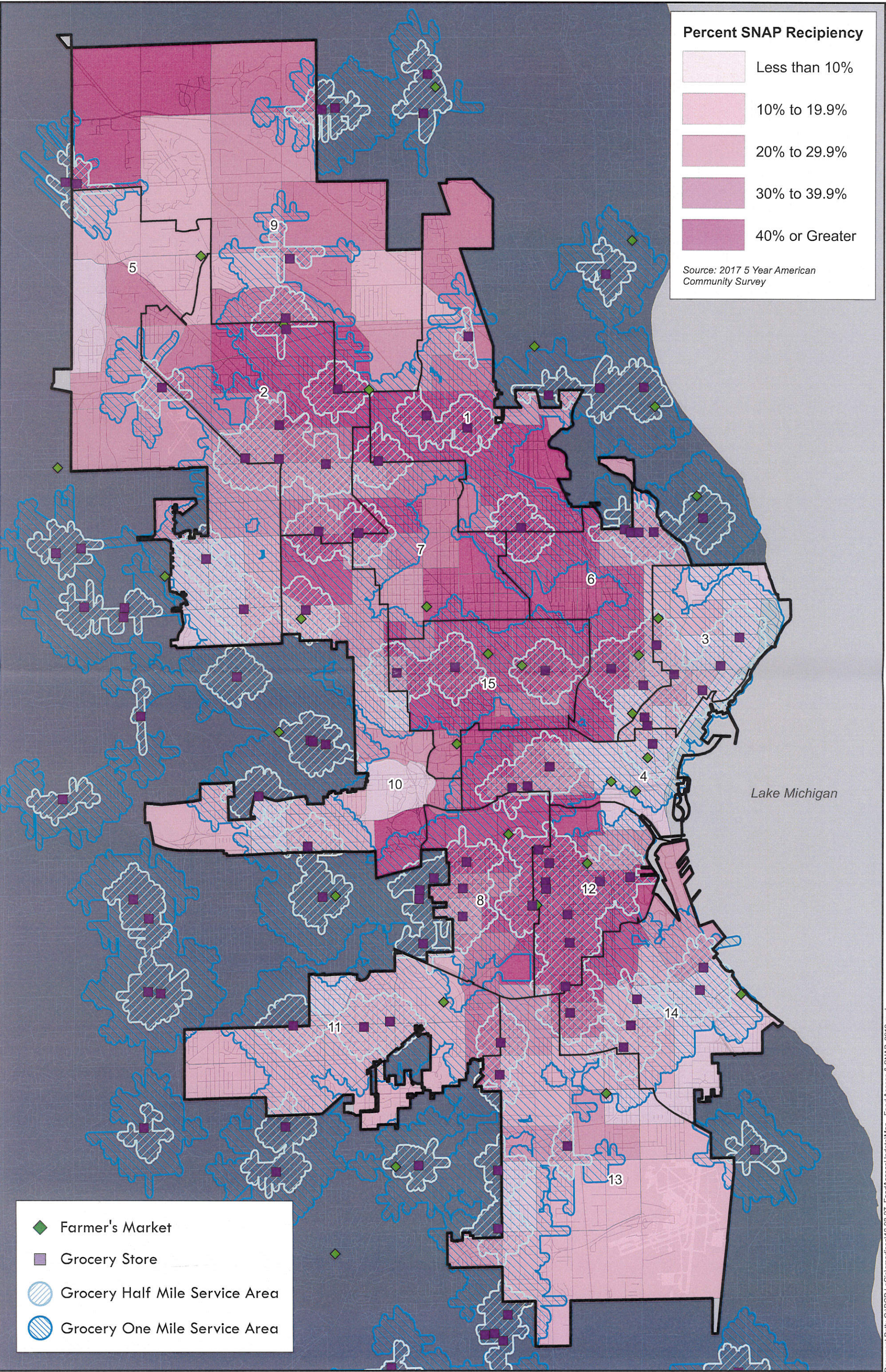
Prepared by the Department of City Development Planning Division, 4/8/2019  
Source: City of Milwaukee Information Technology Management Division; Planning Division





**FOOD ACCESS MAPPING**  
**GROCERY STORE SERVICE AREAS**  
**AND SNAP RECIPIENCY, 2019**

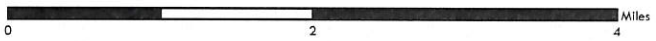
Prepared by the Department of City Development Planning Division, 4/8/2019  
Source: City of Milwaukee Information Technology Management Division; Planning Division



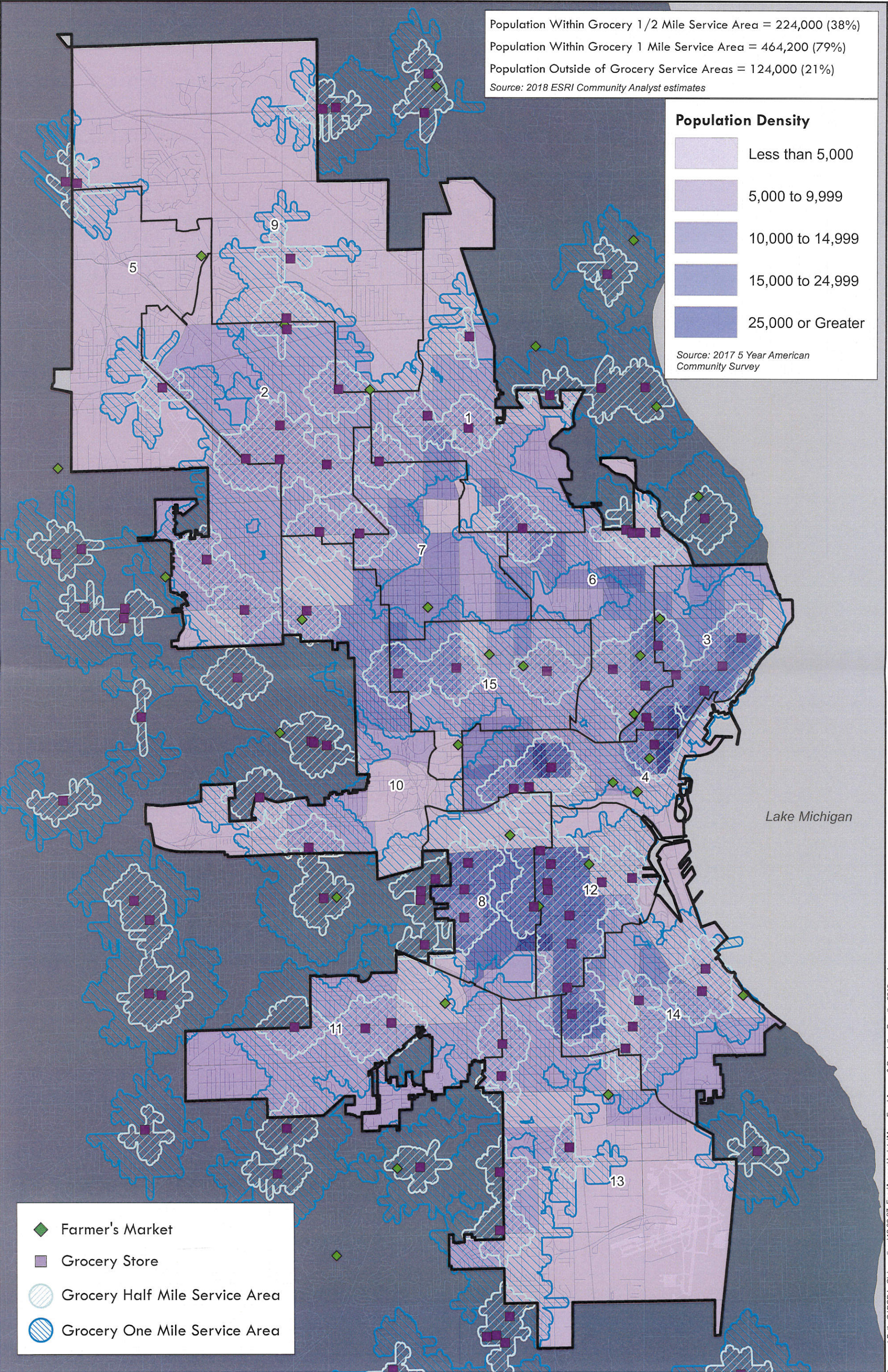


**FOOD ACCESS MAPPING**  
**GROCERY STORE SERVICE AREAS**  
**AND POPULATION DENSITY, 2019**

Prepared by the Department of City Development Planning Division, 4/8/2019  
Source: City of Milwaukee Information Technology Management Division; Planning Division; ESRI Community Analyst



Population Within Grocery 1/2 Mile Service Area = 224,000 (38%)  
Population Within Grocery 1 Mile Service Area = 464,200 (79%)  
Population Outside of Grocery Service Areas = 124,000 (21%)  
*Source: 2018 ESRI Community Analyst estimates*



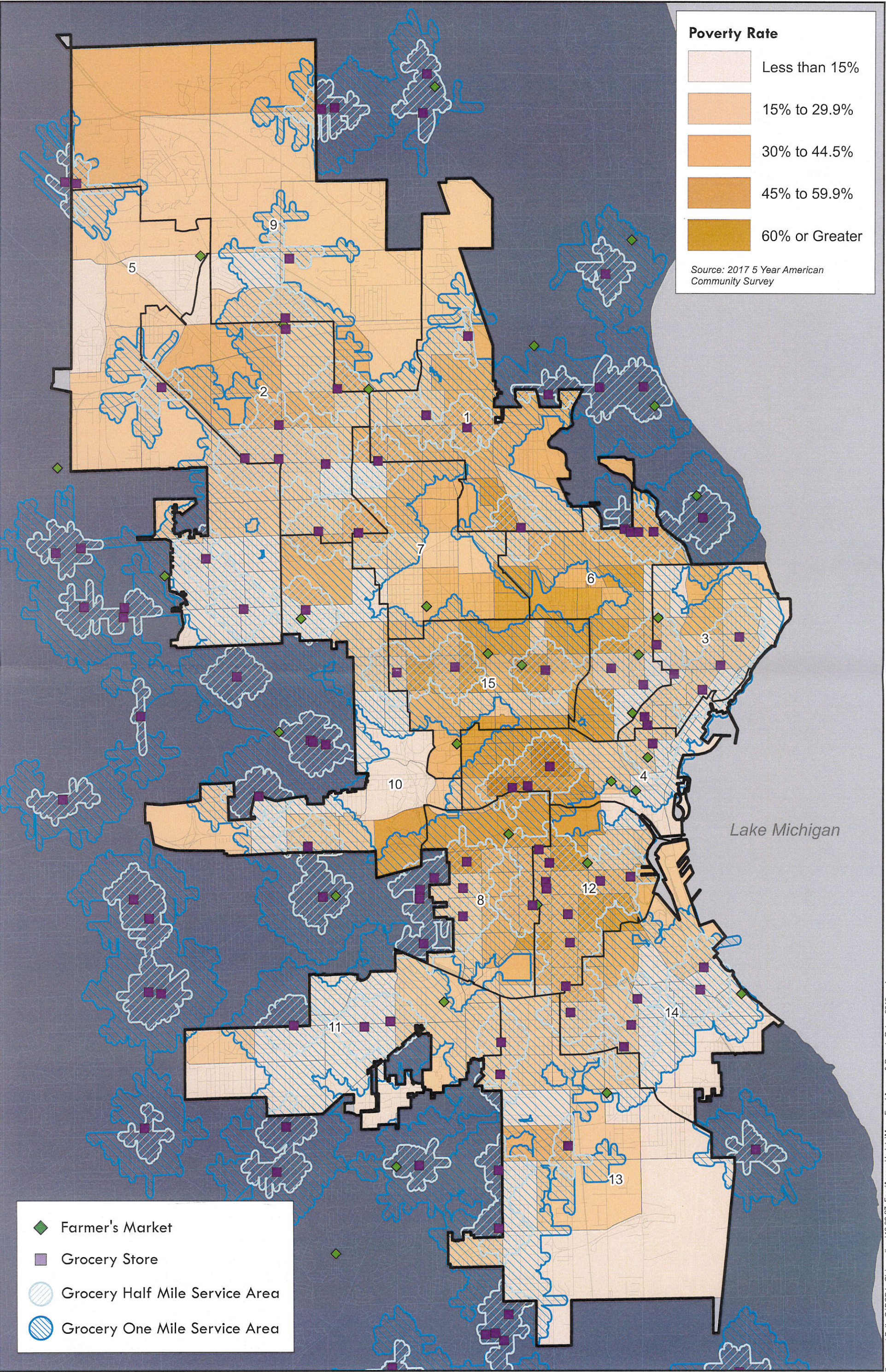
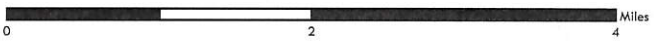
Lake Michigan





**FOOD ACCESS MAPPING**  
**GROCERY STORE SERVICE AREAS**  
**AND HOUSEHOLD POVERTY RATE, 2019**

Prepared by the Department of City Development Planning Division, 4/8/2019  
Source: City of Milwaukee Information Technology Management Division; Planning Division





FOOD ACCESS MAPPING  
GROCERY STORE SERVICE AREAS  
AND AGGREGATE PURCHASING POWER, 2019

Prepared by the Department of City Development Planning Division, 4/8/2019  
Source: City of Milwaukee Information Technology Management Division; Planning Division

