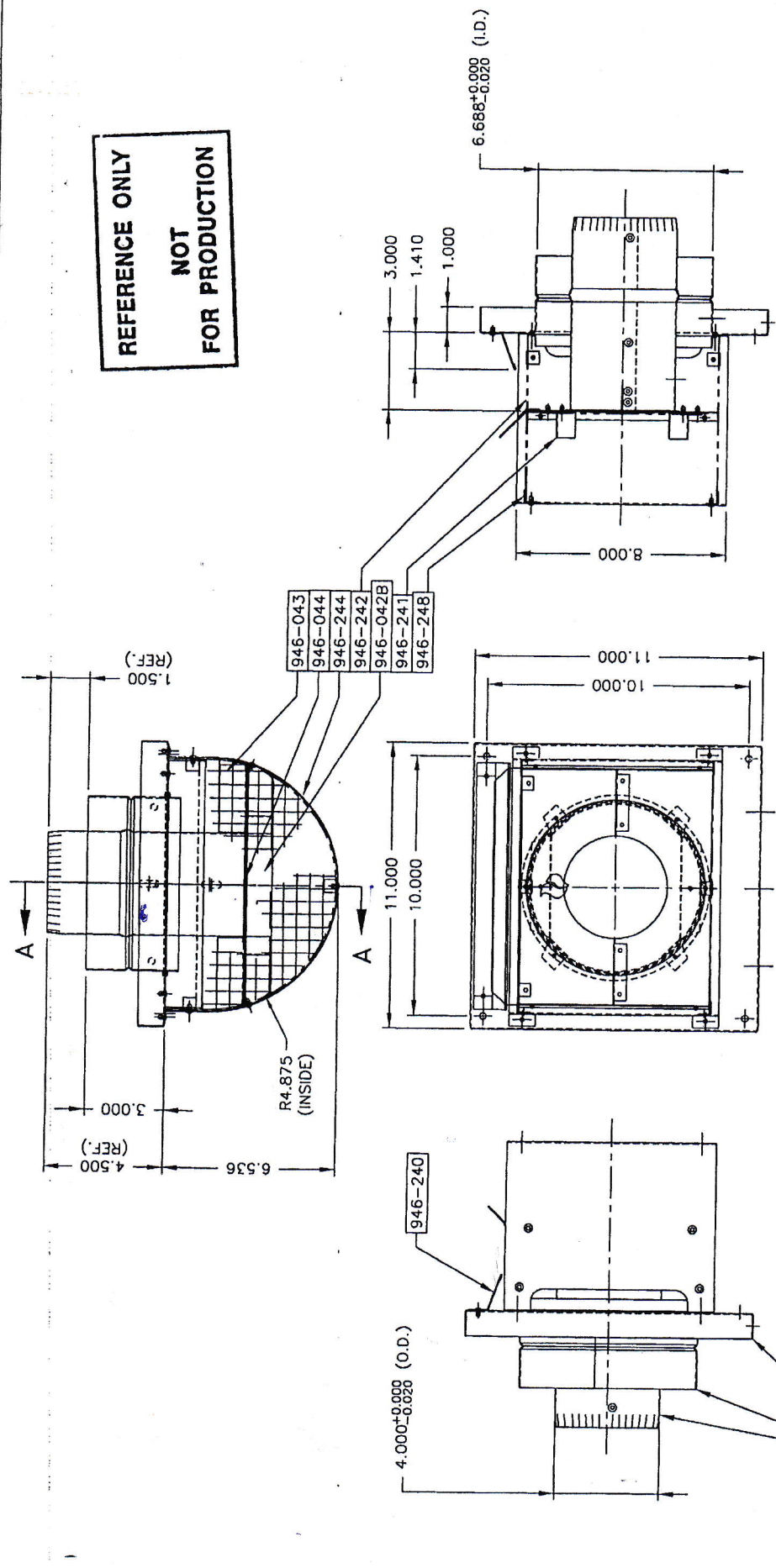


**REFERENCE ONLY
NOT
FOR PRODUCTION**



SECTION A-A

PATENTED

FIREPLACE PRODUCTS INTERNATIONAL		DWN	S. SHUM	JAN 03, 2002
PART : ASTRO CAP HORIZON TERMINAL		CHK		
MAT'L : ALUMINUM (0.020 & 0.040)		BLANK SIZE	: N/A	
3RD ANGLE PROJECTION	TOLERANCES UNLESS OTHERWISE STATED	C.N.	SIGN	DATE
DO NOT SCALE	ANGULAR = ± 1°	G2975	S. SHUM	APR 2, 02
	DIMENSIONS = ± 0.031	G2642	A. LAU	JUN 7, 01
	INSIDE BEND RADII = N/A			
	UNITS IN INCHES			
ASTRO CAP #	REV.	PROCESS : ASSEMBLY		
MODEL #	946-523	SCALE : 1:4		
QTY.	1	CURRENT REVISION		
		PREVIOUS REVISION		
		946-523		

MAY 05 2005

THIS DRAWING IS THE PROPERTY OF FPI LTD., IT MAY NOT BE COPIED IN WHOLE OR IN PART, OR DISCLOSED TO A THIRD PARTY WITHOUT OUR PRIOR WRITTEN CONSENT.