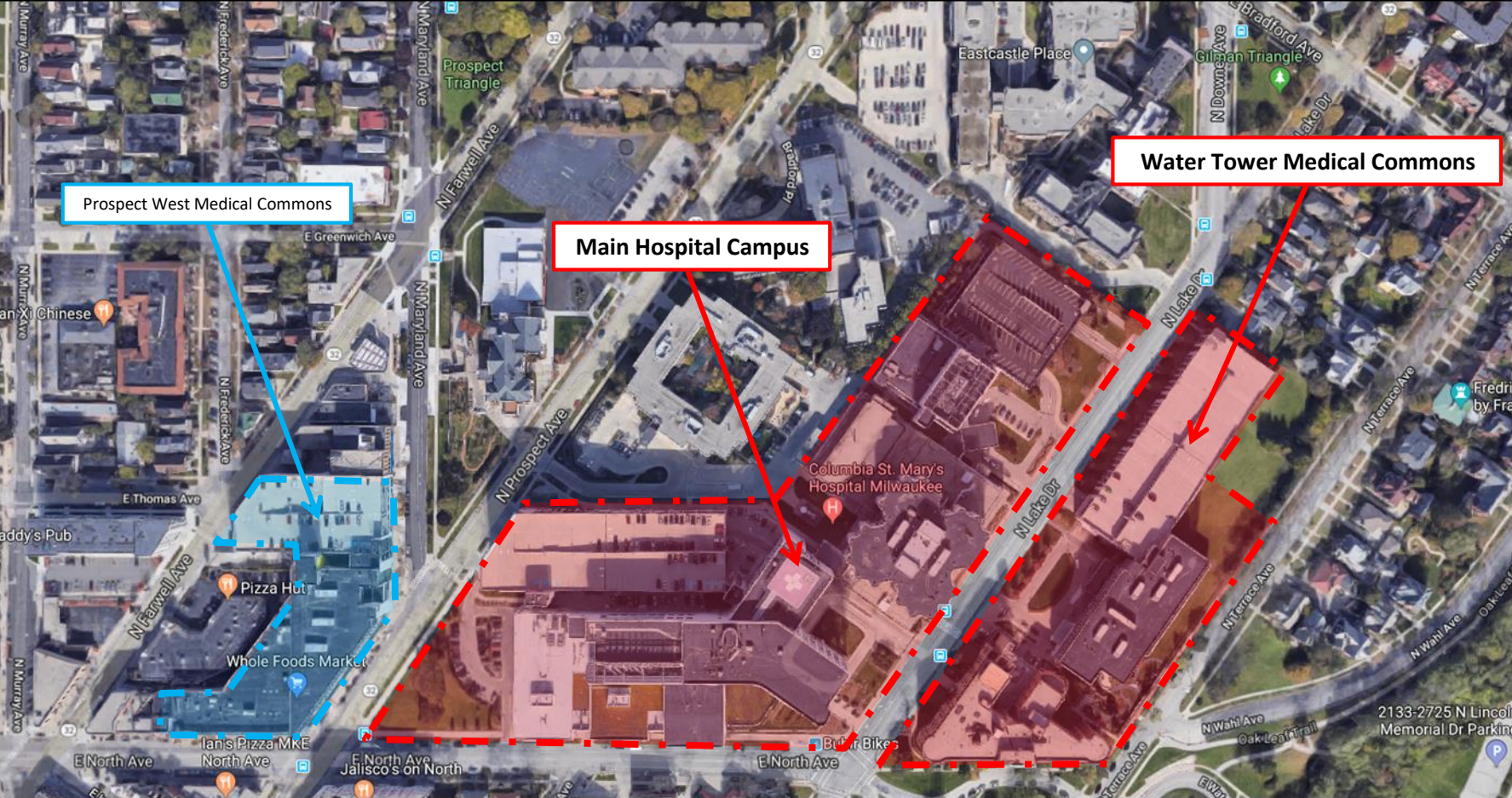


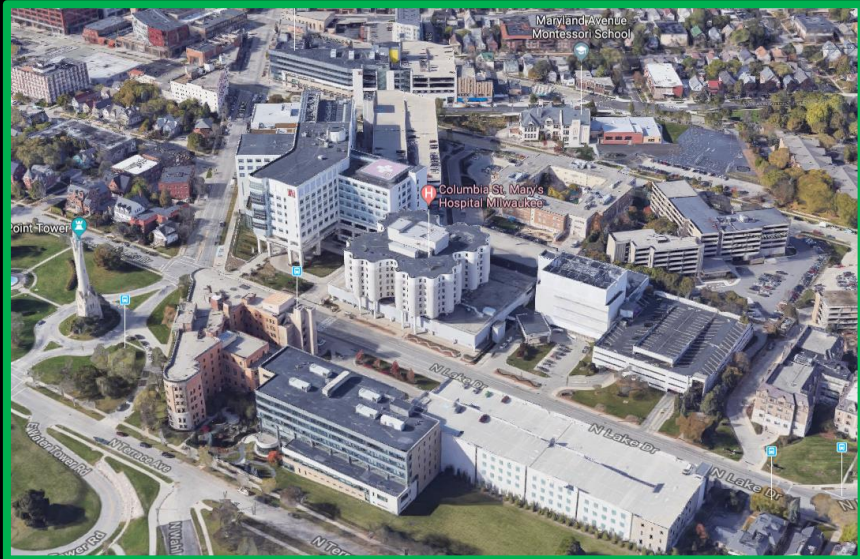
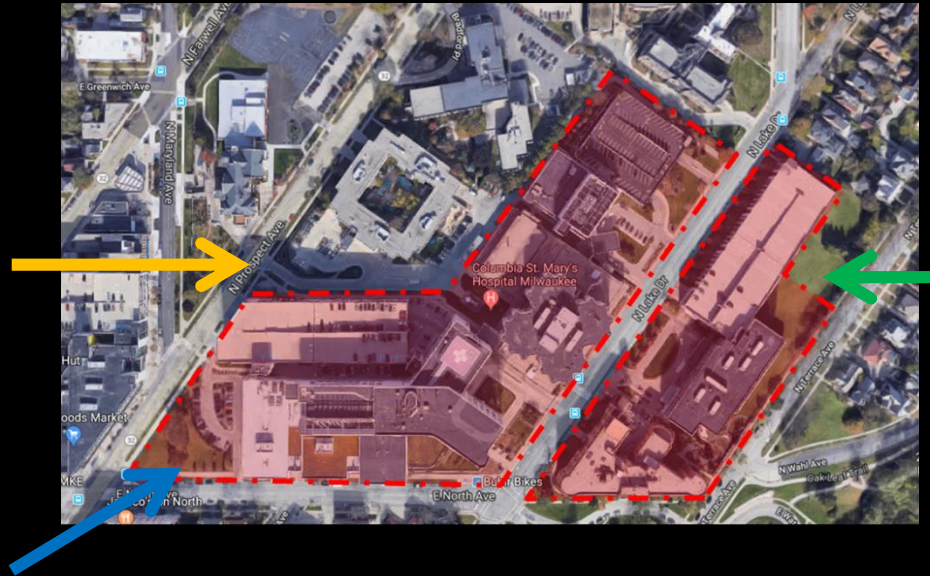
File No. 181209. Substitute resolution relating to a Minor Modification to the Detailed Planned Developments known as Columbia St. Mary's Main Hospital and Columbia St. Mary's Phase 1 (Water Tower Medical Commons) to allow additional site signage on land located on the north side of East North Avenue between North Prospect Avenue and North Terrace Avenue, in the 3rd Aldermanic District.



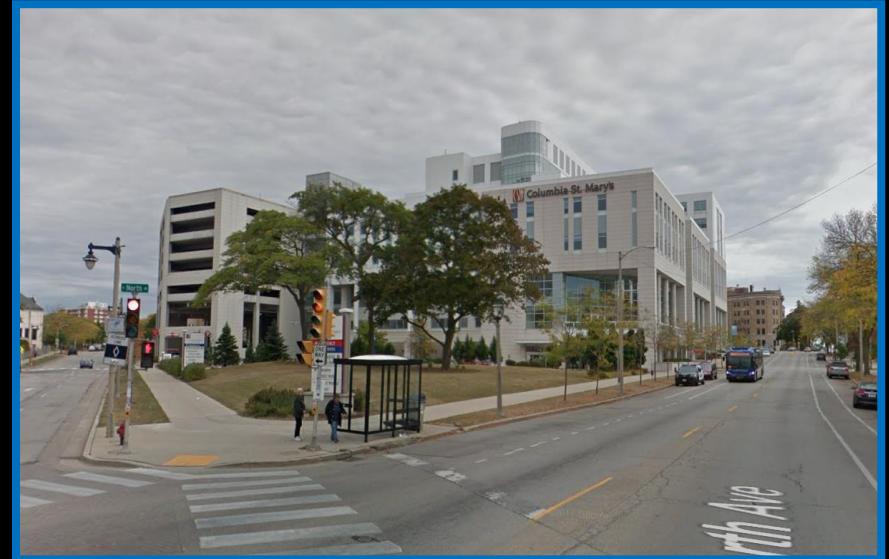
File No. 181209. Site Context Photos



Aerial view looking east

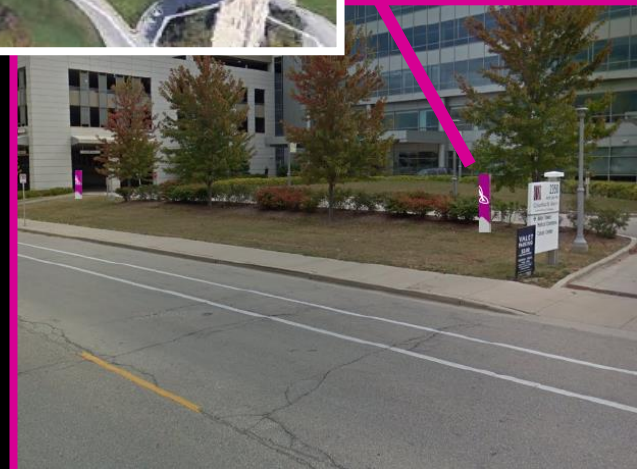
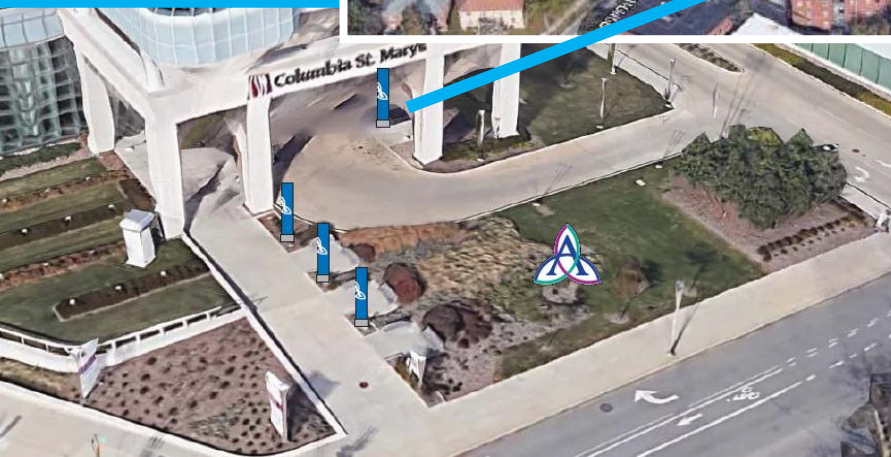
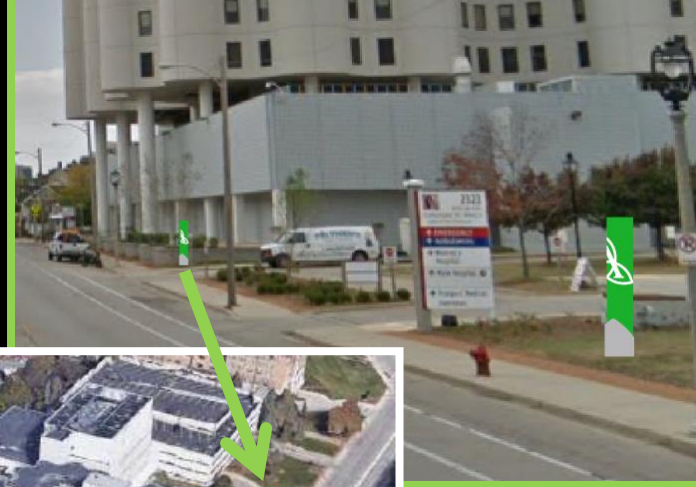
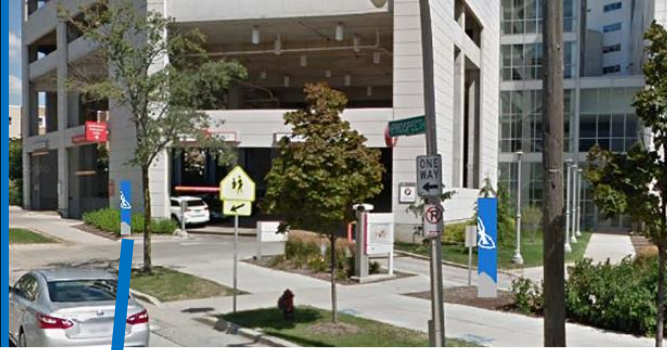


Aerial view looking west



View from North Avenue and Prospect Avenue

File No. 181209.



File No. 181209.

