

A wide-angle photograph of the Milwaukee skyline and waterfront. The foreground shows a grassy field and a paved road with a few cars. A body of water, likely Lake Michigan, separates the foreground from the city. The city skyline is visible in the background, featuring various buildings, including a prominent red brick building and a tall, modern glass skyscraper. The sky is blue with scattered white clouds.

A new symbol
for Milwaukee.

A flag defined

A flag should be simple and readily made; it should be different from the flag of any other country, place or people; it should be significant; it should be readily distinguishable at a distance; the colors should be well contrasted and durable; and lastly, and not the least important point, it should be effective.



MILWAUKEE

1846



Greater Together is a nonprofit organization that embraces collaboration and creativity to drive fair and just inclusion into Greater Milwaukee's Creative Industries so all can participate, prosper, and reach their full potential.



THE PEOPLE'S FLAG
OF
MILWAUKEE

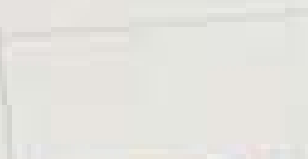








THE CHILDREN'S PLAN
MILWAUKEE
A flag for the city we aspire to.



THE CHILDREN'S PLAN
MILWAUKEE
A flag for the city we aspire to.

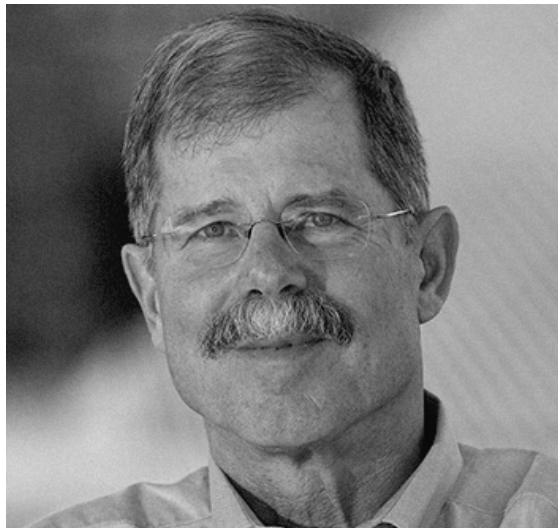


1,006

flag design submissions received from the public



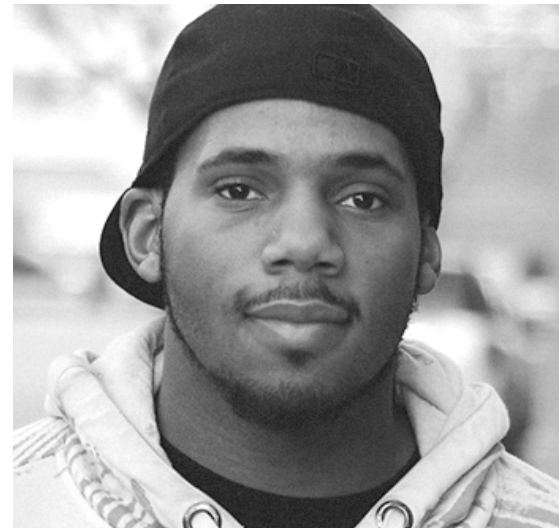
Ted Kaye



John Gurda



Jena Sher



Xavier Ruffin



Steve Kodis



3 state areas top middle-income list

By RICK ROWELL
rowell@journal-sentinel.com
Wisconsin is one of the most solidly middle-class parts of the country, but the last decade and a half have not been particularly good for the middle class, as the state, a new study by the Pew Research Center indicates.
Wisconsin has a remarkable cluster of metropolitan areas with high concentrations of middle-income households, the study shows. Among 329 metro areas analyzed, from Bangor, Maine, to Honolulu, not one topped Waupun's 67% of adults living in middle-

But Wisconsin, like nation, sees fortunes of those in the center decline, study says

Wisconsin four of the 10 most solidly middle-class areas in the study group. No other state came close to matching that.
But the fortunes of the middle class have been waning. The Pew study shows, and Wisconsin is a prime exhibit of that trend.
The state as a whole has the

It seems obvious that the urban areas with the largest middle-income share also seem to be those with among the largest declines in middle-income earnings.
John Heywood
an economist at

Ryan support solid at home

But picture changes for speaker at national level

Paul Ryan's support is solid at home, but picture changes for speaker at national level.
Ryan's support is solid at home, but picture changes for speaker at national level.
Ryan's support is solid at home, but picture changes for speaker at national level.

NEWSWATCH

LOCAL
A high-capacity well: Attorney General Brad Schimel issues a legal opinion narrowing the powers of the Department of Natural Resources to regulate high-capacity wells. **3A**
Firearm straw purchases: Officials call for stronger laws to deter straw purchases of firearms after a woman is charged with providing a convicted felon with a gun used to shoot a police officer. **3A**

SPORTS
Sweet deal: Jeff Sewell, a basketball star at Grafton High School who later helped lead Al McGuire's Marquette Warriors to the 1970 NIT championship, has died. **1B**

WORLD
Iraqi violence: Baghdad has its deadliest day this year with three car bombs claimed by the Islamic State. **8A**
Folic acid and autism: A study suggests that very high levels of folic acid in mothers' blood at childbirth is linked to a higher risk of the children developing autism. **5A**

State Fair Park director Frenette fired

Park board votes unanimously after hours of closed-door deliberations
Leah Vukmir (R-Wausau), a state legislator who is on the board, said she was not involved in the decision. Frenette's attorney, Franklin Frenette, said she was not involved in the decision. Frenette's attorney, Franklin Frenette, said she was not involved in the decision.

The Tax is On Us Flooring SALE May 11th - 12th
Kwik-Kwik is on sale for everything in our store! Quality floors you want. LOW PRICES you deserve.
Laminates from **69¢** Per sq. ft. up to **1.99**
Hardwood from **1.79** Per sq. ft. up to **7.99**
Call 800-888-8888 for more details. **800-888-8888**

3 state areas top middle-income list

By RICK ROWELL
rowell@journal-sentinel.com
Wisconsin is one of the most solidly middle-class parts of the country, but the last decade and a half have not been particularly good for the middle class, as the state, a new study by the Pew Research Center indicates.
Wisconsin has a remarkable cluster of metropolitan areas with high concentrations of middle-income households, the study shows. Among 329 metro areas analyzed, from Bangor, Maine, to Honolulu, not one topped Waupun's 67% of adults living in middle-

But Wisconsin, like nation, sees fortunes of those in the center decline, study says

Wisconsin four of the 10 most middle-class metro areas in the study group. No other state came close to matching that.
But the fortunes of the middle class have been waning. The Pew study shows, and Wisconsin is a prime exhibit of that trend.
The state as a whole has the

BANNER DAY FOR CITY?

Competition hopes to find design to replace Milwaukee's 'hot mess' of an official flag

By MARY SPICUZZA
spicuzza@journal-sentinel.com
Most people don't realize the City of Milwaukee has an official flag.
And many who've seen it are not impressed.
Milwaukee's baby blue flag, which is packed with a barrage of images ranging from a ship to the old County Stadium to a giant stalk of wheat honoring the city's brewing industry, has been called "a hot mess."
That description came from Roman Mars, a radio host and design expert with a self-described flag obsession, who has labeled Milwaukee's flag one of the worst he's ever seen. But Mars has stirred a new passion for the study of flags, known as vexillology, and a wave of efforts to redesign some of the uglier specimens.
"Nothing can quite prepare you for one of the biggest train wrecks in vexillological history," Mars said in a 2015 presentation. "Are you ready? It's the flag of Milwaukee, Wisconsin."
"Lighten up, man," Milwaukee Mayor Tom Barrett joked. "It's not that bad."
But the mayor added that the official flag is a bit dated.
"I will say I think the city flag is outdated, certainly to the extent

Shown are some of the top flag designs, as selected by a team of judges. See a gallery of more designs at journal-sentinel.com/photos.

NEWSWATCH

LOCAL
High-capacity wells: Attorney General Brad Schimel issues a legal opinion narrowing the powers of the Department of Natural Resources to regulate high-capacity wells. **3A**
Firearm straw purchases: Officials call for stronger laws to deter straw purchases of firearms after a woman is charged with providing a convicted felon with a gun used to shoot a police officer. **3A**

SPORTS
Sweet deal: Jeff Sewell, a basketball star at Grafton High School who later helped lead Al McGuire's Marquette Warriors to the 1970 NIT championship, has died. **1B**

WORLD
Iraqi violence: Baghdad has its deadliest day this year with three car bombs claimed by the Islamic State. **8A**
Folic acid and autism: A study suggests that very high levels of folic acid in mothers' blood at childbirth is linked to a higher risk of the children developing autism. **5A**

State Fair Park director Frenette fired

Park board votes unanimously after hours of closed-door deliberations

Leah Vukmir (R-Wausau), a state legislator who is on the board, said she was not involved in the decision. Frenette's attorney, Franklin Frenette, said she was not involved in the decision. Frenette's attorney, Franklin Frenette, said she was not involved in the decision.



Xavier Ruffin (from left), Steve Kodis and Ken Hanson print and look over entries to the flag design competition at Hanson Dodge Creative.

Finalists to be on display

that it includes County Stadium on it," Barrett said.
Inspired by Mars, a local graphic designer named Steve Kodis is now on a mission to create a new flag for the city.
"I stumbled onto Milwaukee's flag," Kodis said. "Internally, when I saw it, I just sort of said, 'Man, we could have something so much better. We could have such a cooler flag.'"
Kodis has since devoted much of the last year to an effort to redesign a new flag. He launched a website chronicling the movement. The People's Flag of Milwaukee, and teamed up with Ken Hanson, the executive director of Greater Together, a nonprofit organization devoted to promoting racial and economic equality.
Together, they organized an ambitious contest to design a new flag for the city.
"I could have never, ever done it on my own," Kodis said.
He said the effort went beyond simply redesigning the flag to helping create a "beautiful connection between the city and its people."
Organizers held a number of design workshops around Milwaukee, at locations including Washington High School, Bay View High School, the University of Wisconsin-Milwaukee and the Milwaukee Institute of Art and Design.
After receiving more than 1,000 entries — 1,006 in all — the contest organizers named the five finalists who will be on display at City Hall starting Saturday, when the five finalists will also be unveiled. That same day they are set to launch an online rating process so the public can help pick a new flag.

The official flag, adopted in the mid-1950s, was the result of an alderman pulling together several contest entries onto one flag.

The winner will be named in June.
There are five principles of flag design, according to the North American Vexillological Association. Keep it simple. The flag should be so simple that a child can draw it from memory. Use meaningful symbolism. Use two or three basic colors. No lettering or seals. Be distinctive or be related.
Hanson said they decided to add one more principle.
"What's the symbol for the city that we want to become," he said. "What would symbolize the city that we want to go toward, that we aspire to?"
It remains to be seen whether this flag will become the official city flag, or simply be come the unofficial "people's flag."
Barrett praised the effort.
"I view it as a great community engagement exercise to see whether we want to have this 'people's flag' or even to consider changing our city flag," the mayor said. "It would take a Common Council action... to change it."
City Clerk Jim Owczarski said adopting a new city flag would be no easy feat.
"The challenge is that the Common Council is the one that has to put in the file to actually make the change, and to my knowledge, no member of the Common Council has agreed to do that," he said.
Owczarski added that he's happy the flag is getting so much attention.

"Look, I'm excited that people are excited about the flag. I've certainly known about it a long time. I like it a lot. I think it's an interesting part of who we are... It's really going to be up to the Common Council to decide," he said.
The contest organizers had little praise for the current flag.
"It didn't rise up out of the people in any way," Hanson said.
"With the best intentions I'm sure, it was designed by an alderman," Kodis added. "It wasn't even really designed by the people."
Kodis and Hanson acknowledged there other pressing problems facing the city, but said a new flag could help.
"Flags are meant to unite and rally the people, in times of celebration and in times of strife. And I think every city, every big city, has its problems, has its ailments. We're no different because of that. But if the city has a really great flag, they can use that flag to rally the people," Kodis said. "And really (take) actions to fix these problems."

anticipate releasing his returns before November. "There's nothing to learn

Dedicated to the Highest Standards of Knowledge
Buying and Selling Coins and Jewelry

DERZON
COINS & JEWELRY BOUTIQUE

- All Silver & Gold Coins
- Silver Bars & Rounds

2069 South 108th Street, West
Mon-Fri 10-5 • Sat 10-4

CarSoup.com
we're here to help

GET YOUR CAR DEAL

NEW ADS PLACED!
EXCLUSIVE LOCAL SPECIALS
CHECK THEM OUT BEFORE THEY GONE!

WAY BIG SELECTION

CAR DETECTIVE TO ME

WAYS TO MAKE CURRENT

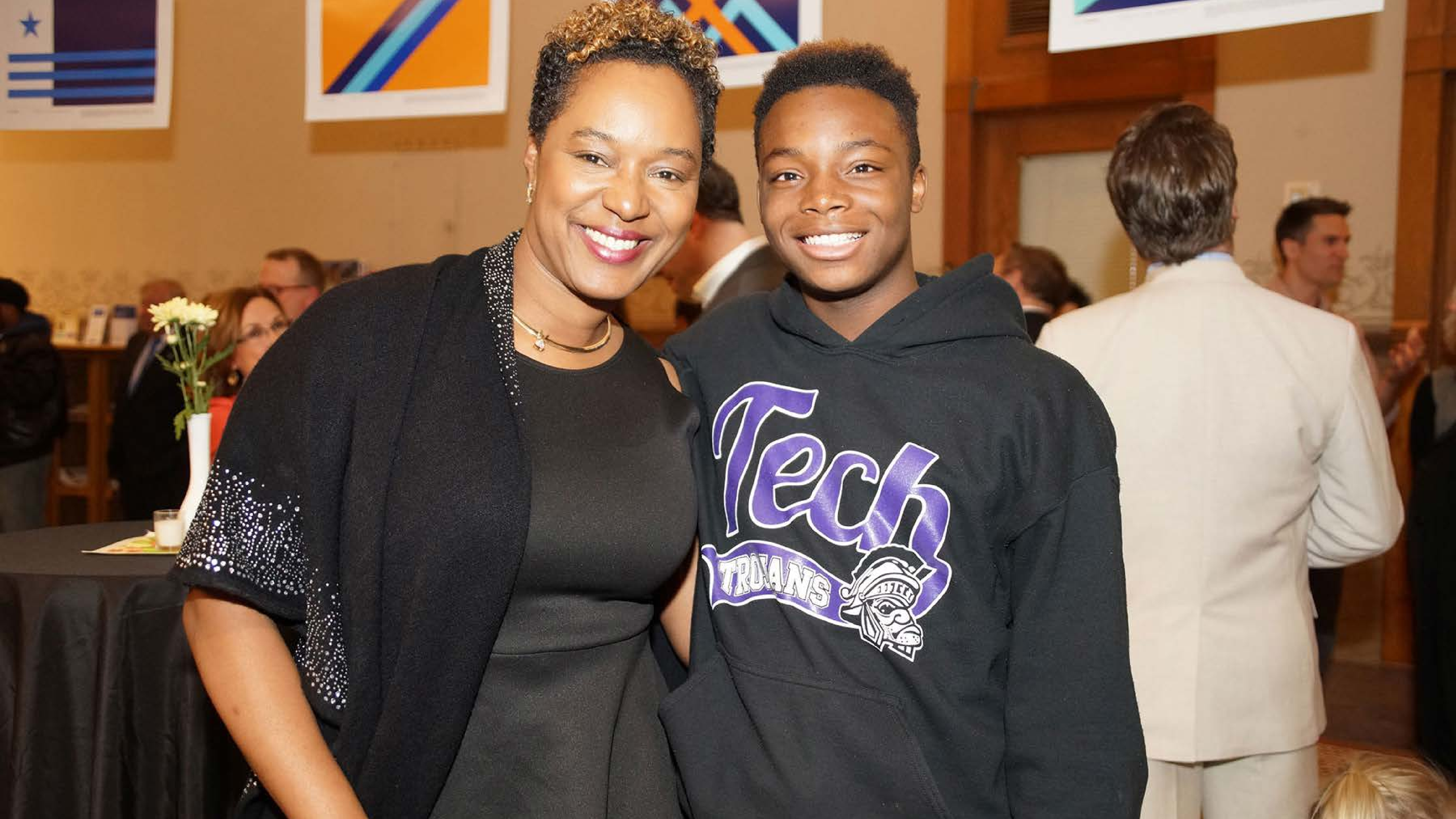
FINANCING OFFERS

INSIDER INFO

CarSoup.com
your search engine for all things cars

















Three Rivers Cameron Pothier

Milwaukee's three rivers flow from the land into the lake, with a large disc representing the city united and our brewing history.



“M” Star DeChazier Stokes-Johnson

Four “M”s connect to form a cream-colored star representing Milwaukee on the blue lake, its Native American roots, and symbolizing the city’s bright future.



Cream City Star Jon Grider

The six points of the star symbolizes the three original sections of the city, its three rivers, representing Milwaukee as the “Cream City” and the largest in Wisconsin.



Sunrise Over the Lake Robert Lenz

The sun rising over Lake Michigan symbolizes a new day. The light blue bars in its reflection represent the city's three rivers (Milwaukee, Menomonee, Kinnickinnic) and three founding towns (Juneau Town, Kilbourn Town, Walker's Point). Gold represents our brewing history and white symbolizes unity.



Golden Arrow Chanya Hughes

Milwaukee's past, present, and future, moving in a positive direction, symbolized through its rivers, brewing history, and the lake, with white echoing the art museum.

6,137

rating responses received from the public



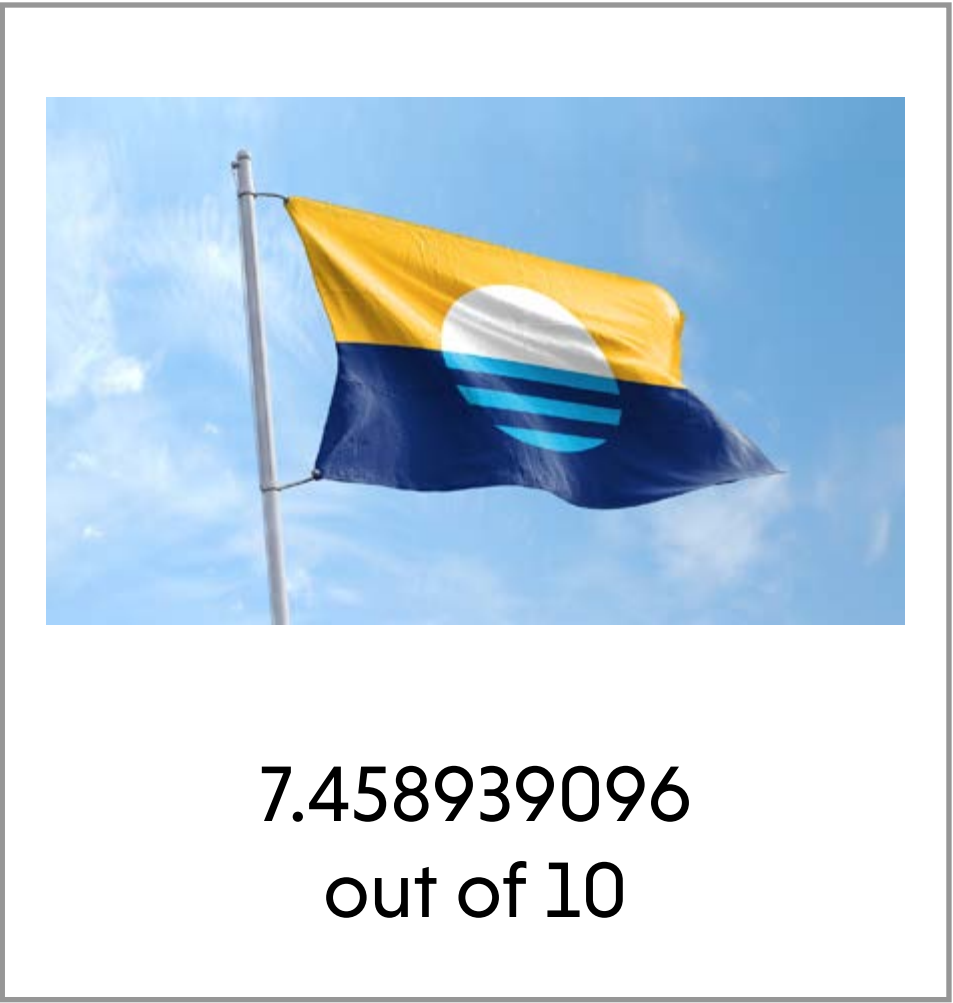
5.469941061
out of 10



5.923182711
out of 10



4.836345776
out of 10



7.458939096
out of 10



5.236738703
out of 10



88NINE

A man with a beard and glasses, wearing a grey short-sleeved button-down shirt and a black flat cap, is performing on stage. He is holding a microphone in his right hand and gesturing with his left arm. The background features a large, stylized logo with the text '88NINE' and 'RADIO' below it. To the right, there is a wooden structure with horizontal slats and a microphone stand. A guitar is visible on the far right. The foreground shows the silhouettes of audience members' heads.

RADIO



Let's make diversity
into Milwaukee's
greatest asset.

Greater Together People's Flag of Milwaukee



GREATER TOGETHER PEOPLE'S FLAG OF MILWAUKEE

What is the city we aspire to?

The People's Flag Design Initiative launched in February of 2016 and featured a series of issue-based workshops that focused on design and discussion about our aspirations as a city.

Over 600 entries are expected.

Professionals and discussion leaders to engage and community leaders to create a dialogue about a future that is inclusive, equitable, prosperous and resilient.

The People's Flag of Milwaukee is a symbol of what we are doing and what we want.

It's make diversity
to Milwaukee's
goal.

GREATER TOGETHER PEOPLE'S FLAG OF MILWAUKEE

What is the city we aspire to?

The People's Flag Design Initiative launched in February of 2016 and featured a series of issues based workshops that focused on design and discussion about the aspirations of a city.

Over 500 artists were expected.

Professional designers and discussion leaders gathered with teachers and community leaders to engage young people in discussion about a future where everyone can thrive.

The result will be a People's Flag of Milwaukee.

May 14
City Hall
Exhibit of the People's Flag

June 14
City Hall
Exhibit of the People's Flag



















2819

2821

FOR RENT





2 HOUR PARKING
7:00AM TO 7:00PM



2690

ATM

BAY VIEW
QUICK MART

Coors
LIGHT

QUEST

T MOBILE
CELL
PHONES

Heineken

WIC

GROCERIES
QUEST & WIC

Corona
Extra

PREMIUM
CIGARS

GOLD BEER

ATM

Gifts
FAX & LOTTERY

T-MOBILE

ROLL YOUR OWN
TOBACCO

CIGARS

Bayview
Quick Mart

CIGARS
AVAILABLE

TOBACCO

e cigs
electronic
vaporizers
e cig
vapor liquids
Heineken

COLD
DOMESTICS & IMPORTS
BEER

FIREWOOD
5'x4" x 16"

POBAIL BUCK
15-4800







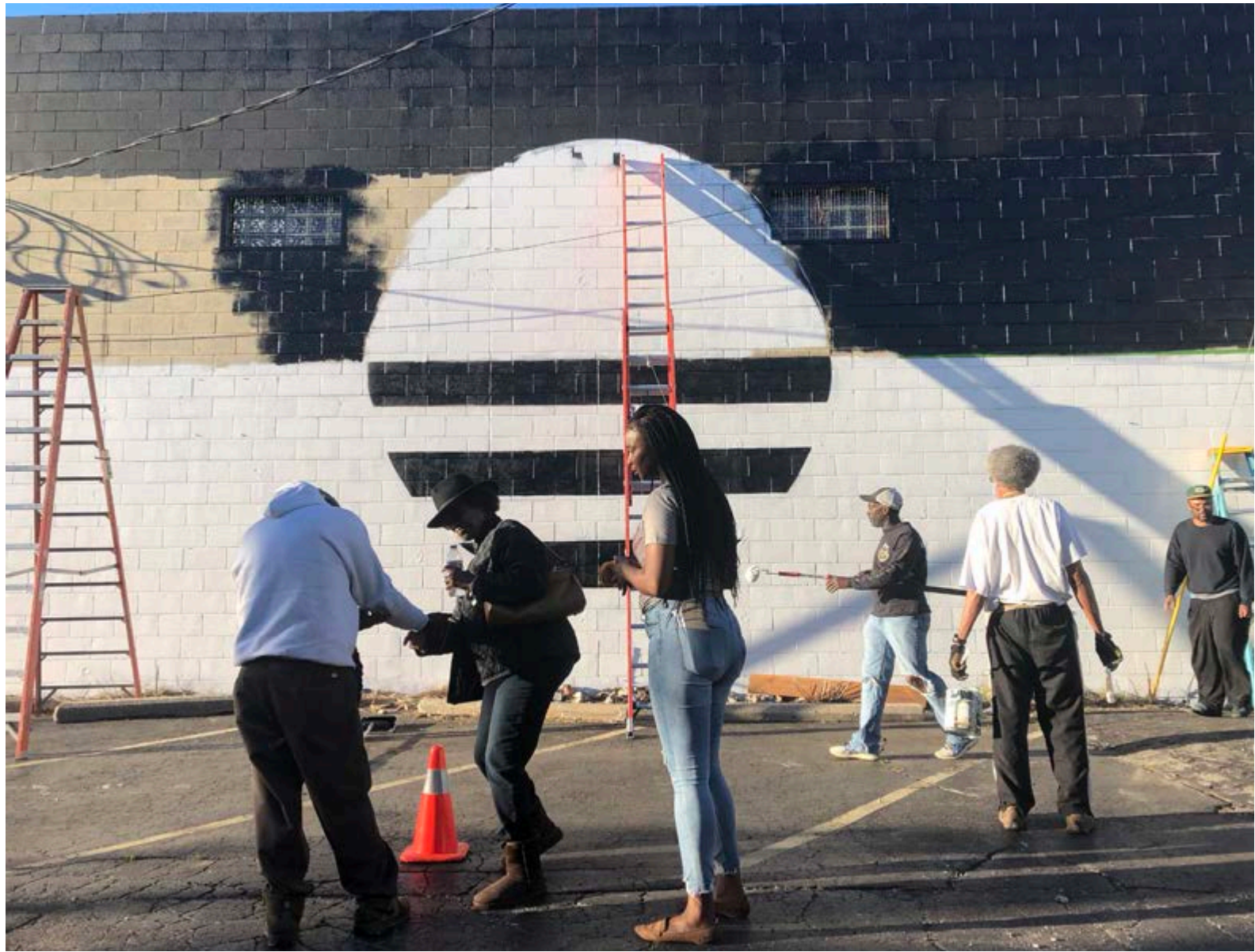
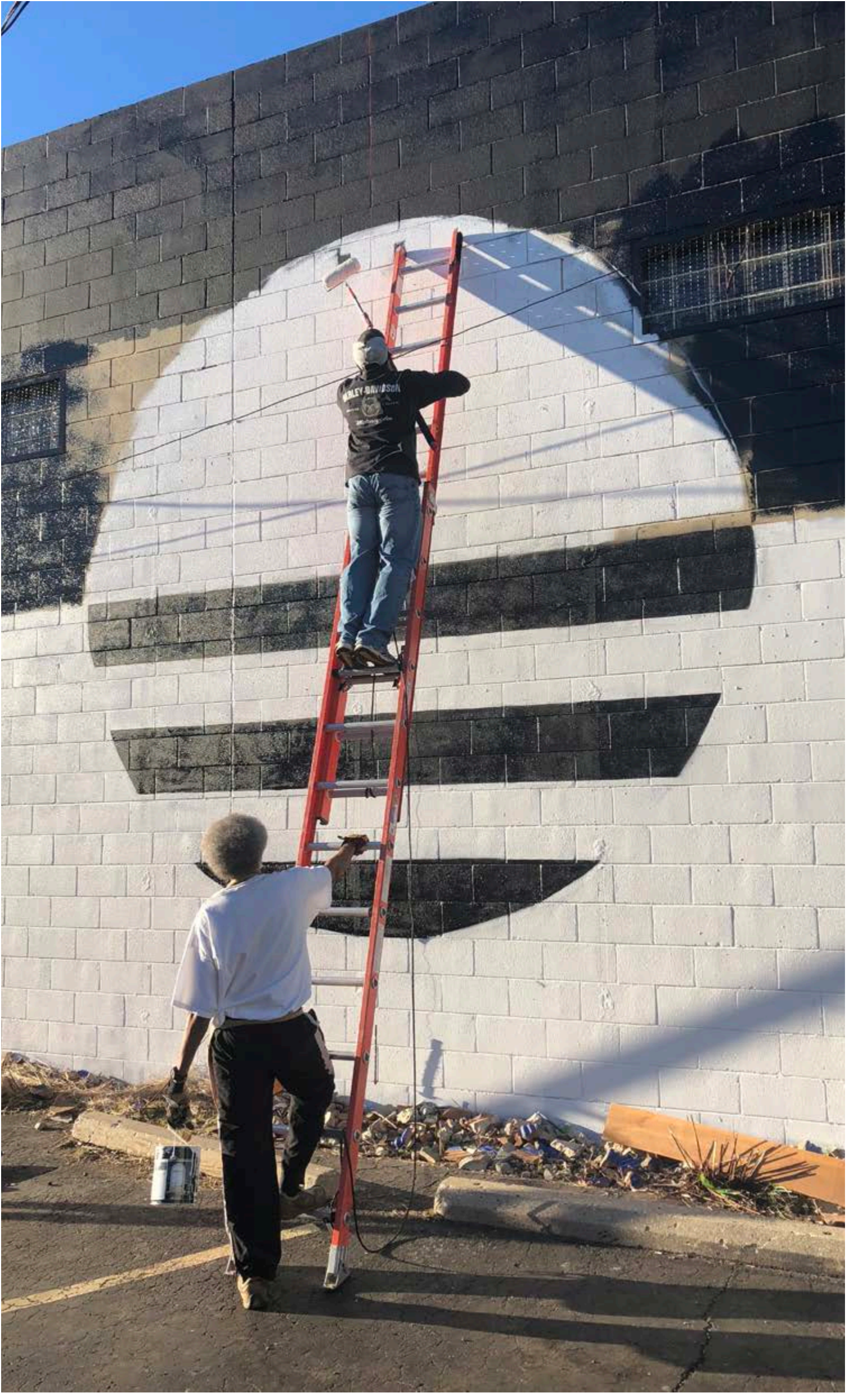
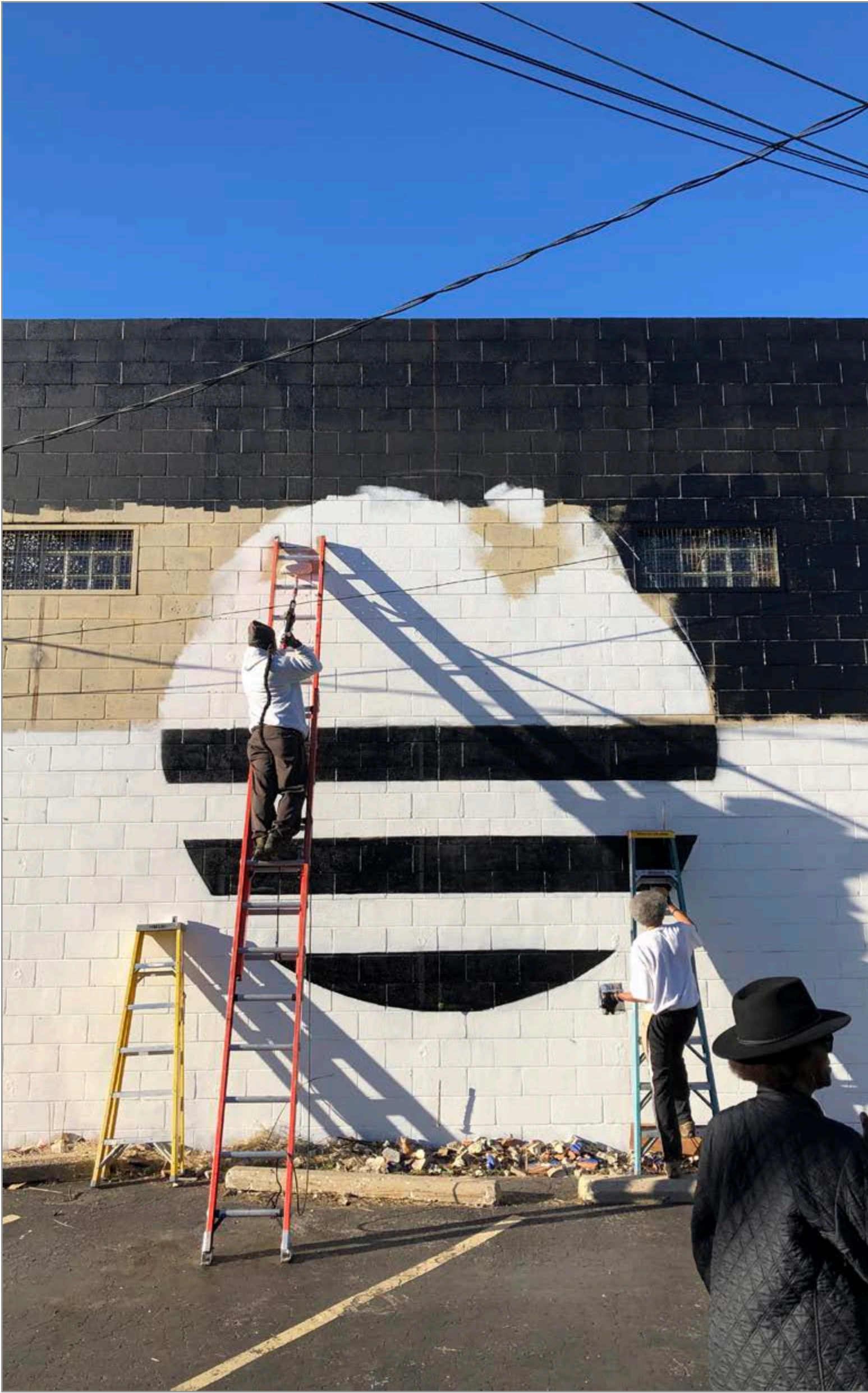
WELCOME

RIVERWEST



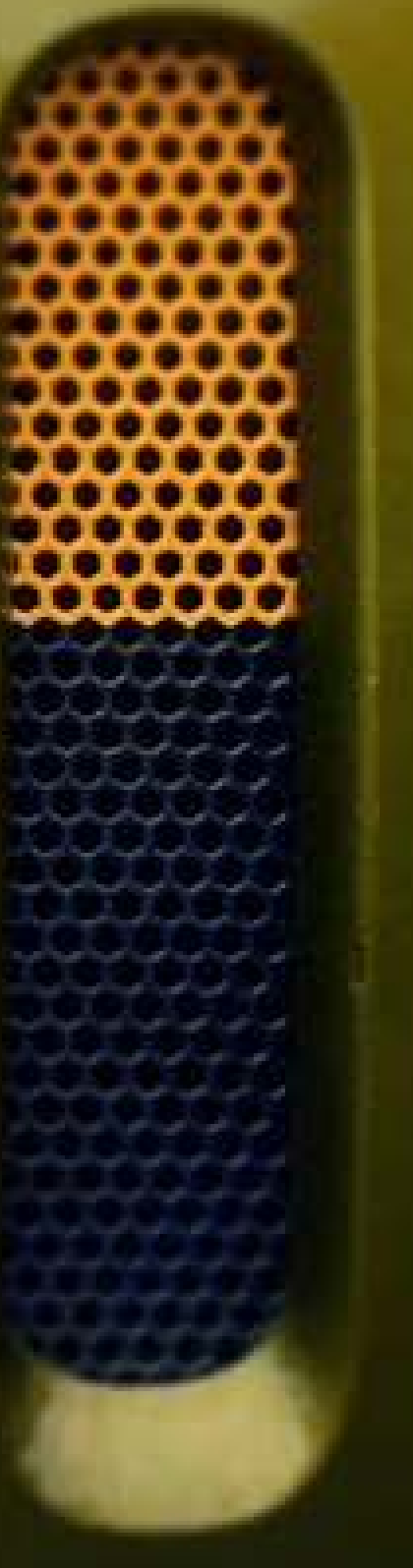
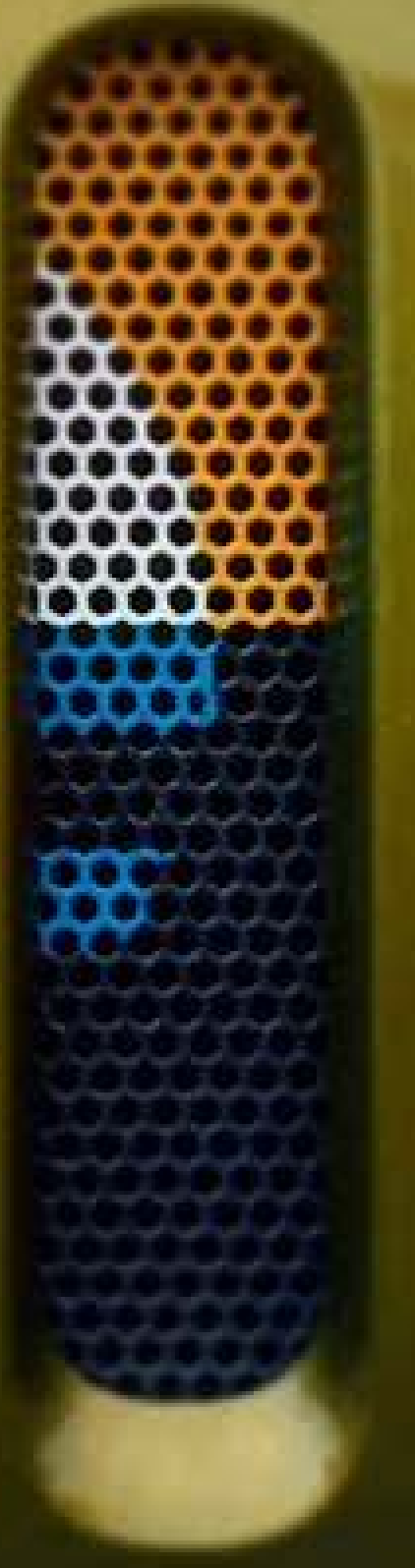
HARAMBEE







Jeep

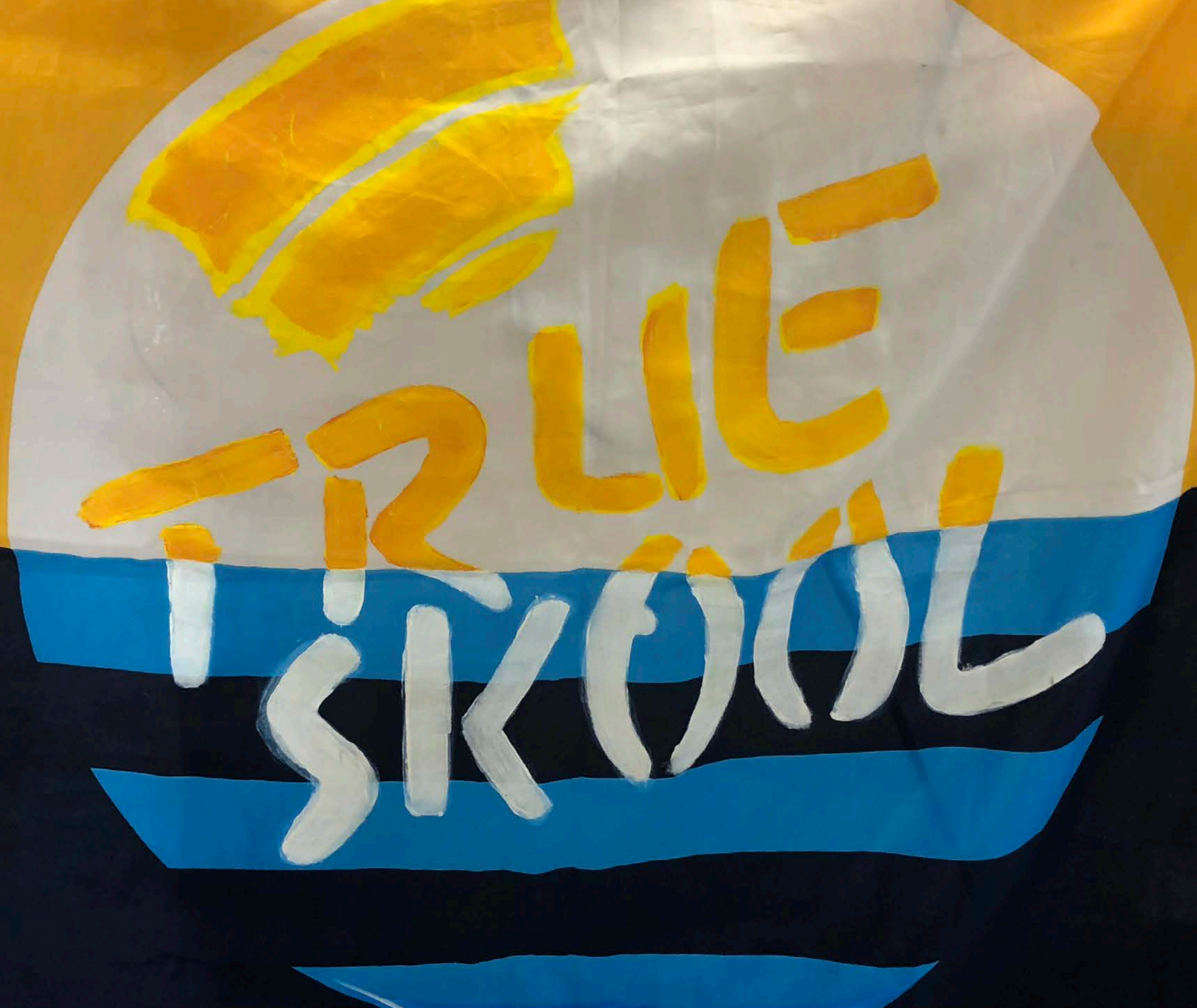










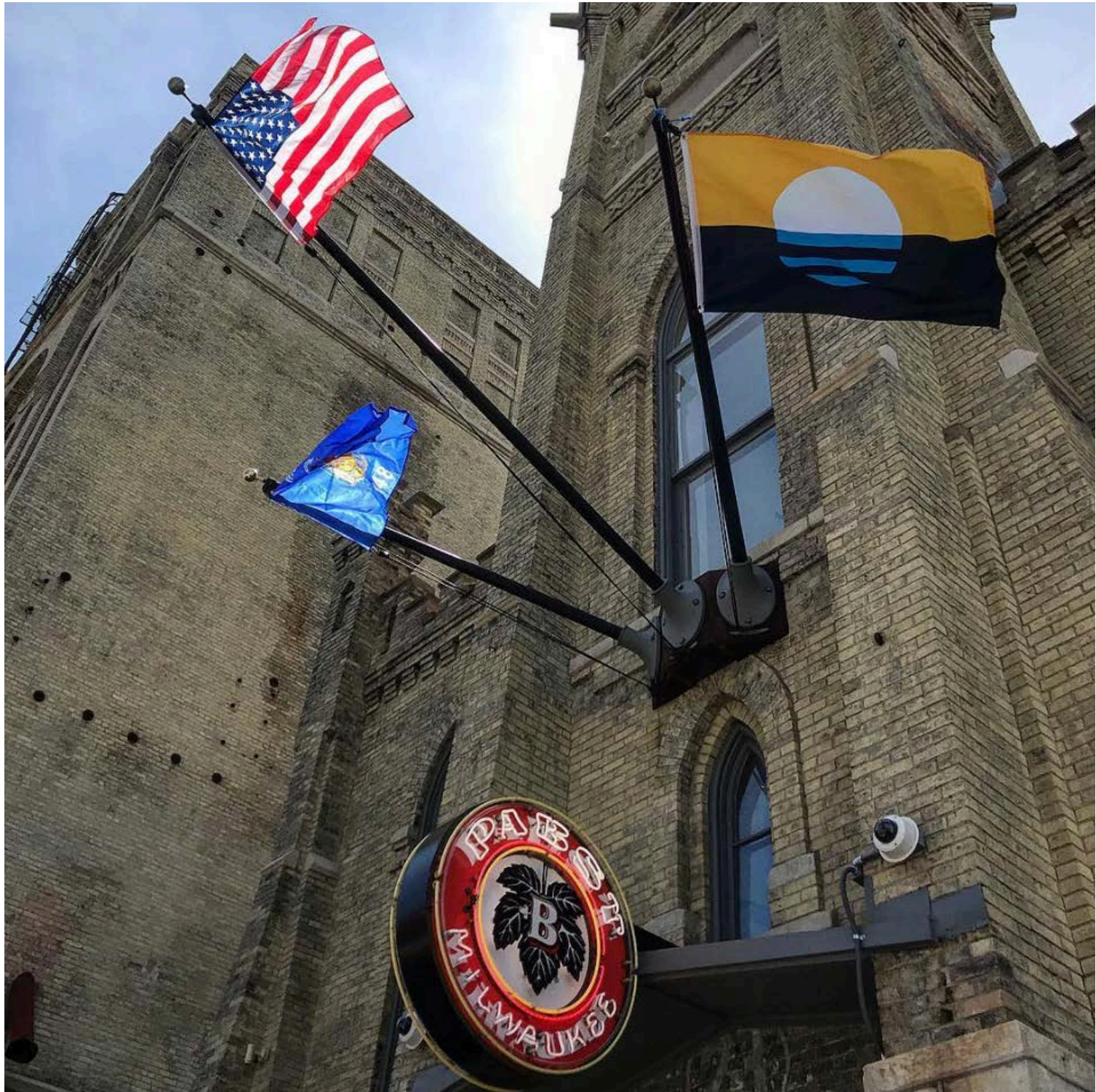


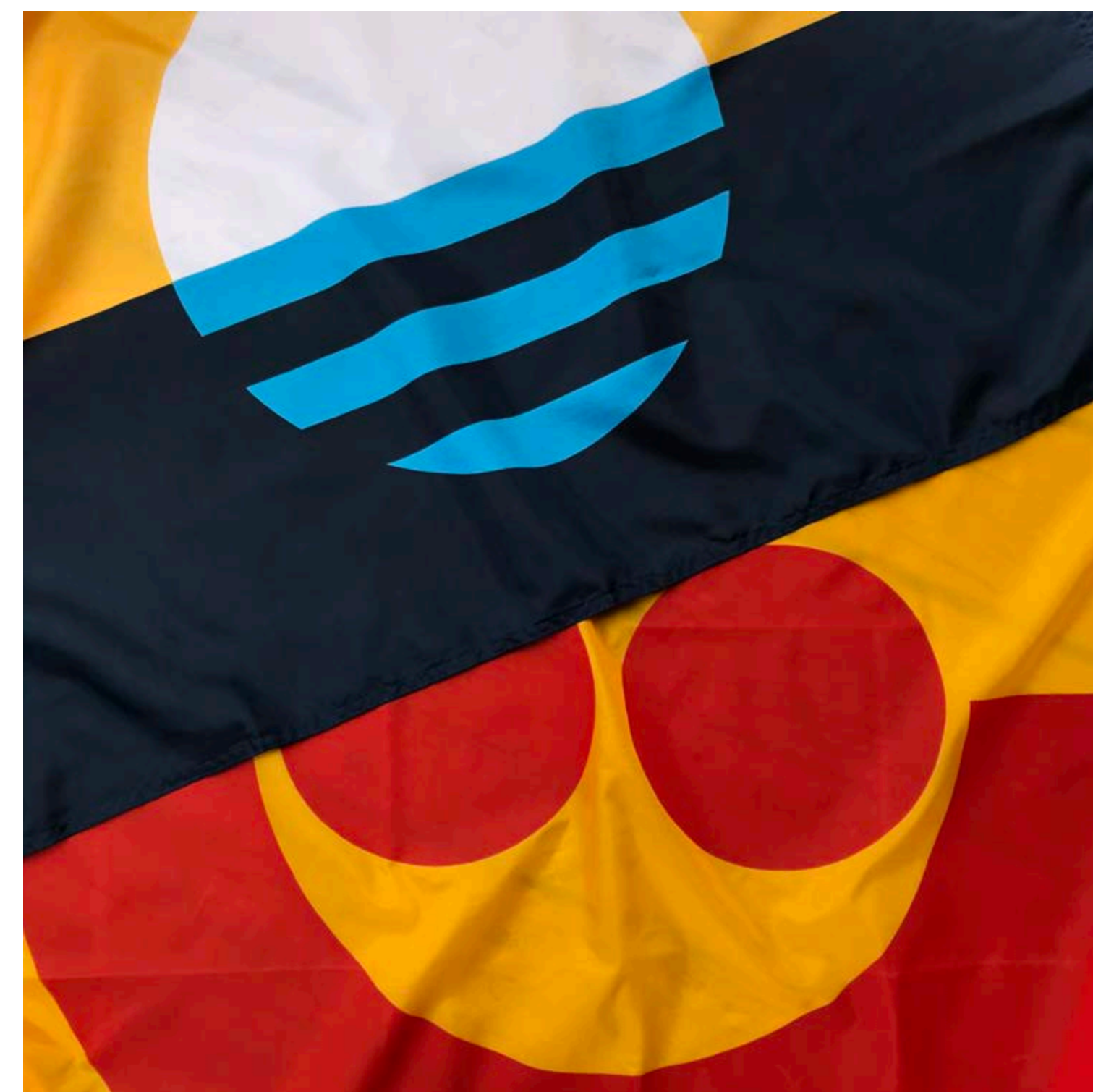






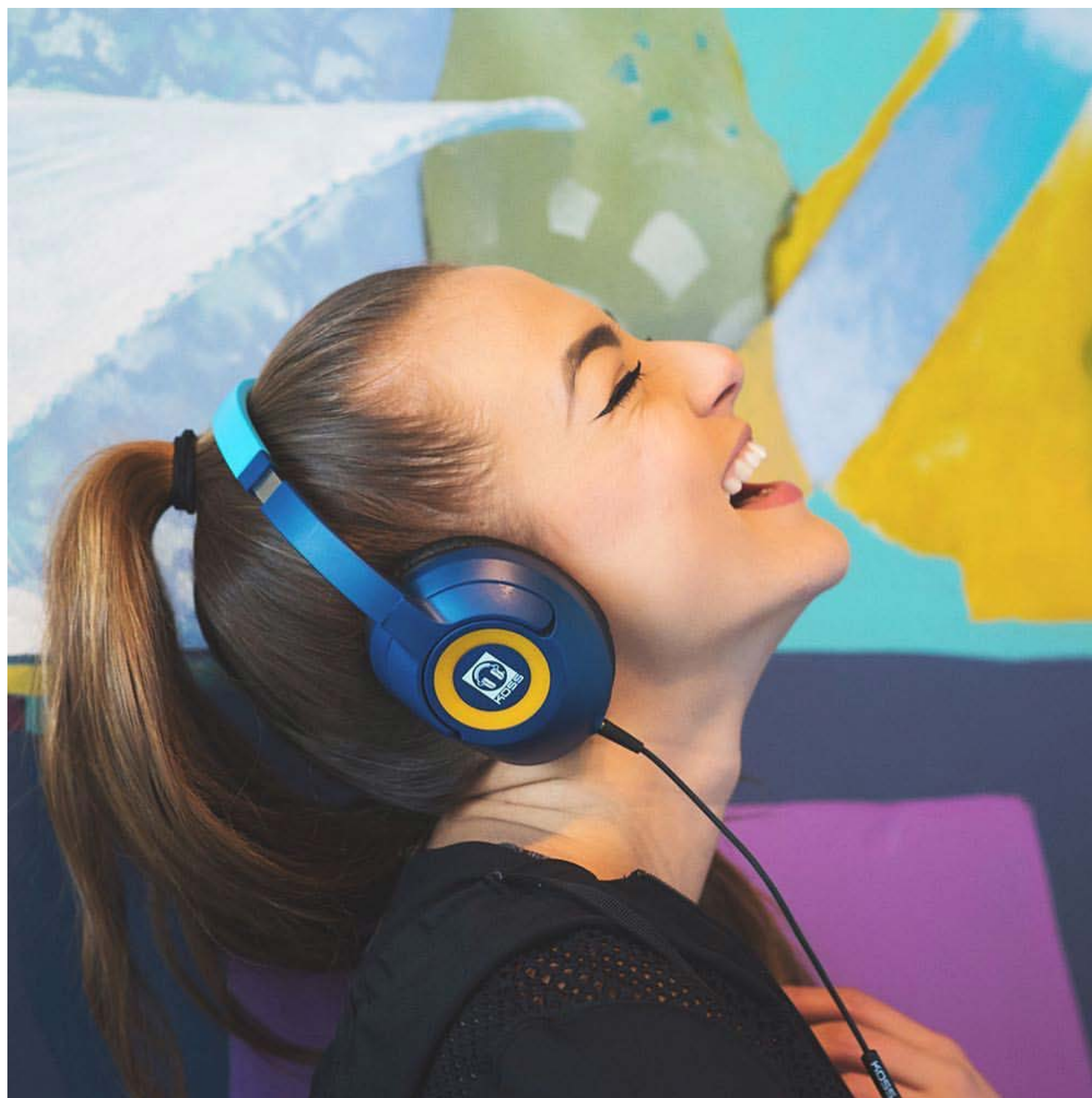






















Thank you.