

**Resolution relating to the Permanent
Historic Designation of the
William C. Kneisler Tavern Building /
Kneisler's White House at 2900 South
Kinnickinnic Avenue
ZND July 24, 2018**



Milwaukee's Historic Preservation
Commission voted to support
Permanent Historic Designation of this
property on July 9, 2018

The property was nominated by Bay View
resident John Ebersol



Historic view at Left
The building was
constructed in 1893.
Christoph Stein was the
architect.

Photo March 2018 at Right



For Lease Brand New Restaurant Space



FOR LEASE

2900 S Kinnickinnic Avenue
Milwaukee, WI 53207

CORY SOVINE
(414) 278-6836
cory.sovine@colliers.com

COLLIERS INTERNATIONAL
833 E Michigan Street, Suite 500
Milwaukee, WI 53202
(414) 276-9500
www.colliers.com

Key Features/Highlights

- > Redesigned and remodeled restaurant space
- > Three seasons outdoor space
- > On-site parking available
- > High-profile corner site in one of Milwaukee's trendiest neighborhoods
- > Potential second floor private dining/banquet



FOR LEASE > BRAND NEW RESTAURANT SPACE

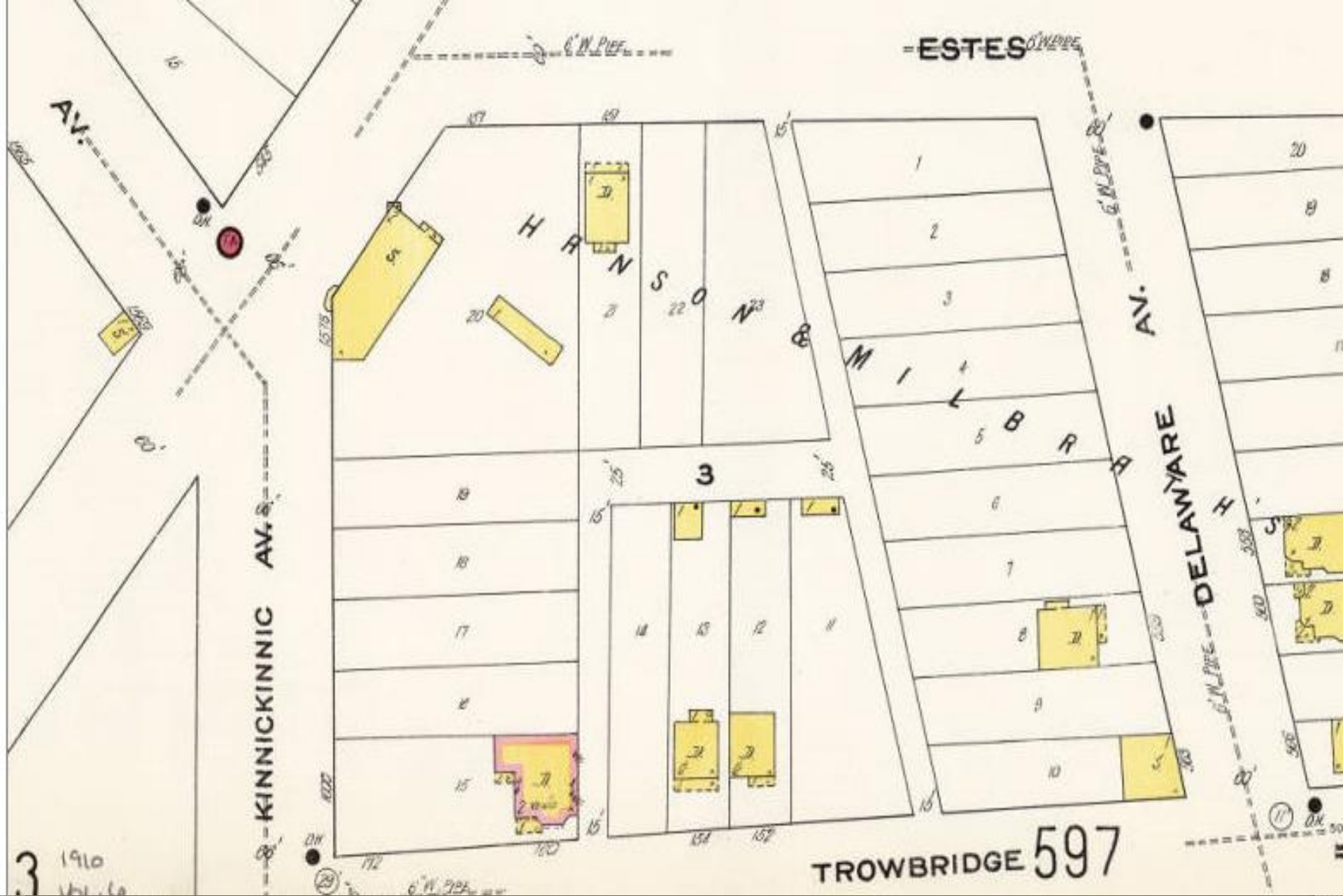
First Floor Plan

■ Additions/Renovations

■ Existing Space



This ad prompted the designation.



Sanborn Map 1910 shows unusual shaped lot



Beth Hildebrand photo at right



Michael Horne's 2015 photo
for Urban Milwaukee at left

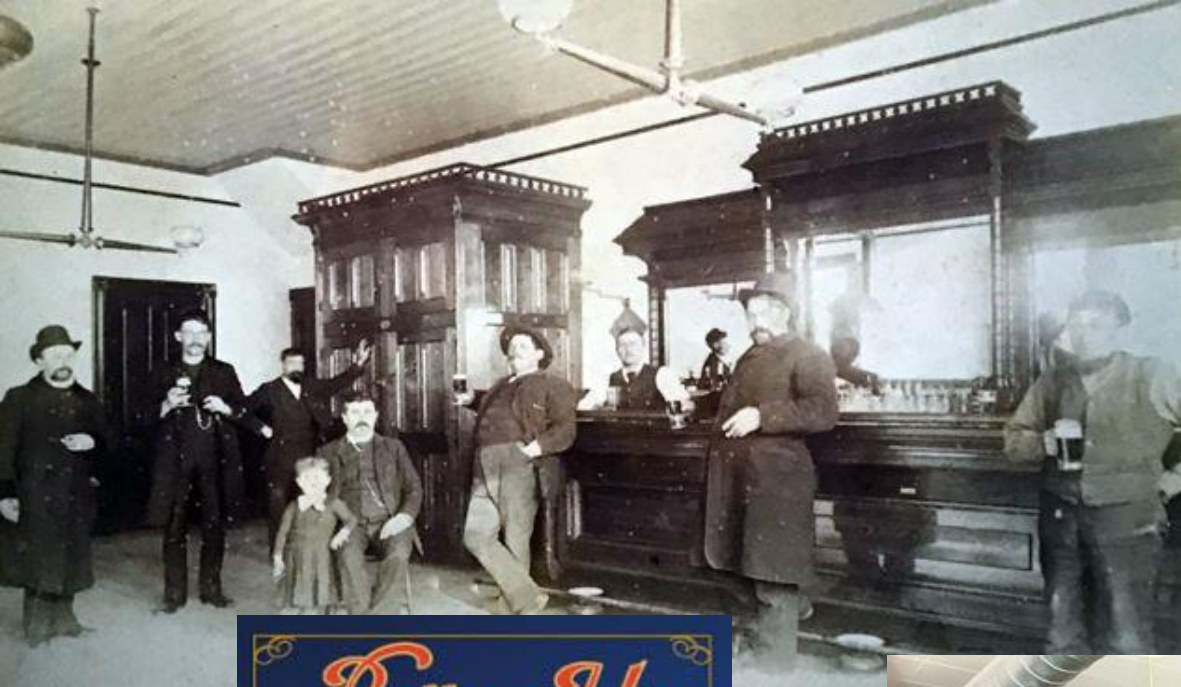


Photo today at right



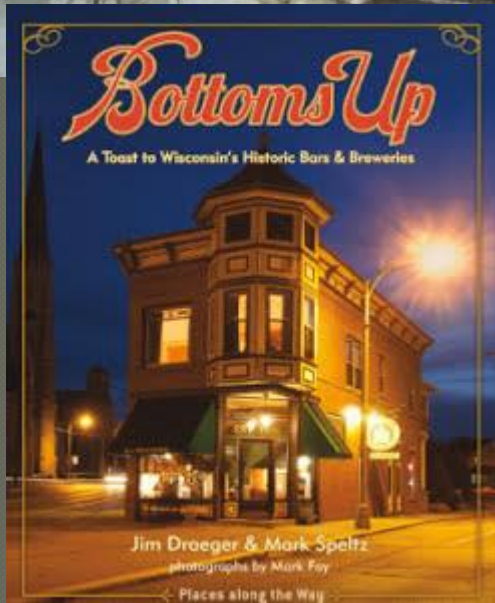






Historic view of interior

Bobby Tanzilo photo 2017
On Milwaukee below .



Kneisler's featured in Bottom's Up



Appears to meet Criteria e-1, e-5, and e-9 of the Milwaukee Historic Preservation Ordinance

E-1—Its exemplification of the development of the cultural, economic, social or historic heritage of the City of Milwaukee, State of Wisconsin or the United States

E-5—Its embodiment of the distinguishing characteristics of an architectural type or specimen

E-9—Its unique location as a singular physical characteristic which represents an established and familiar visual feature of a neighborhood, community or the city