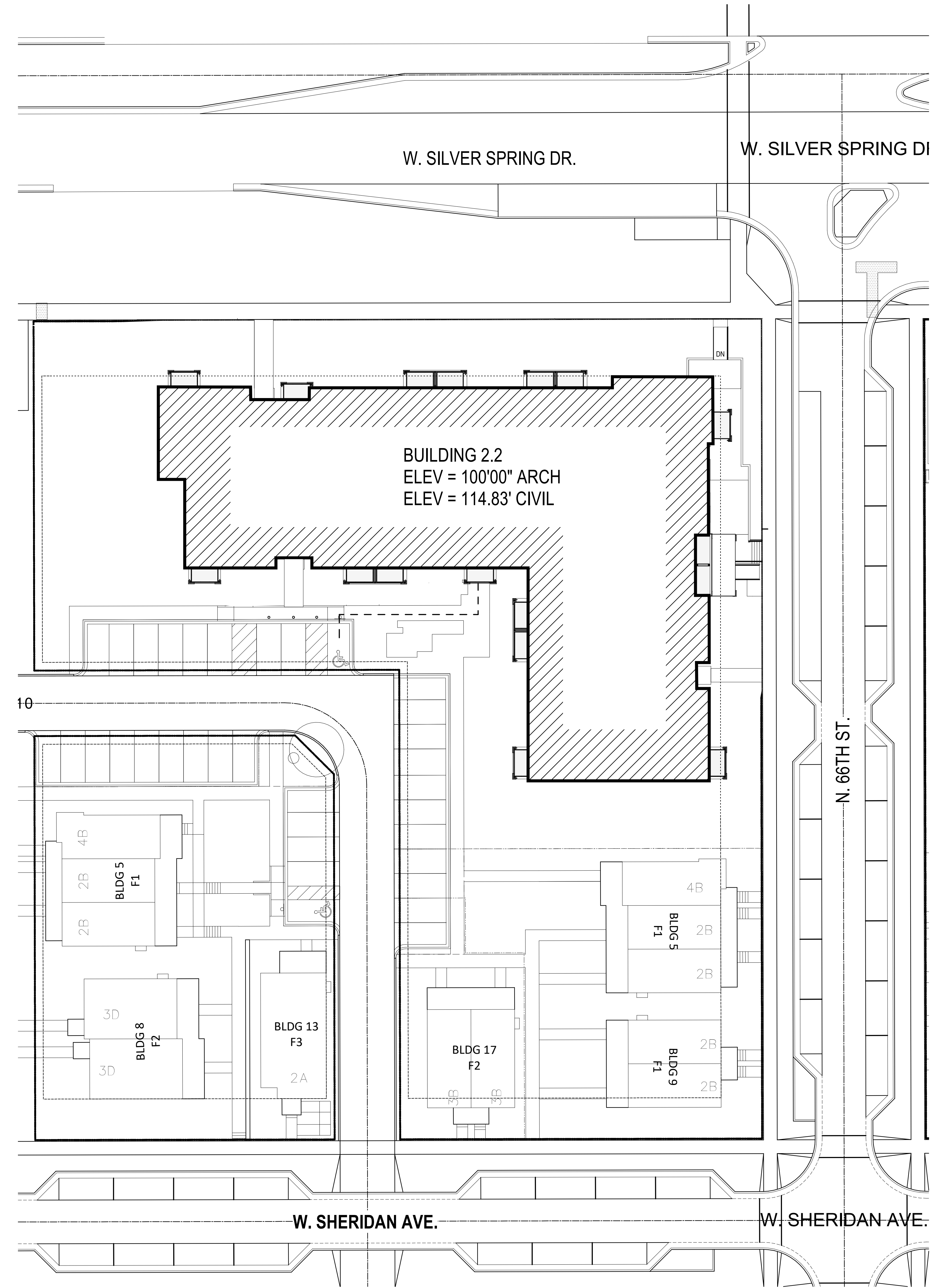


BUILDING 2.2  
 ELEV = 100'00" ARCH  
 ELEV = 114.83' CIVIL

ARCHITECTURAL SITE - APPROVED



BUILDING 2.2  
 ELEV = 100'00" ARCH  
 ELEV = 114.83' CIVIL

ARCHITECTURAL SITE - PROPOSED

WESTLAWN  
 REVITALIZATION  
 - BUILDING 2.2

5545 66th Street  
 Milwaukee, WI 53218

Owner  
 Housing Authority of  
 the City of Milwaukee  
 414.266.3629

Torti Gallas and  
 Partners, Inc.  
 1300 Spring Street,  
 4th Floor  
 Silver Spring, MD 20910  
 301.588.4900  
 www.tortigallas.com

Local Architect  
 Quorum Architects  
 414.265.9265

Local Architect  
 Eppstein Uhen  
 Architects  
 414.271.5350

Structural Engineer  
 R.A. Smith  
 National  
 262.317.3279

Electrical Engineer  
 Czarniecki Engineering  
 262.691.1010

MEP Engineer  
 Thunderbird Engineering, Inc.  
 414.352.2211

Civil Engineer  
 R.A. Smith  
 National  
 262.317.3279

Landscape Architect  
 Ayres Associates  
 608.443.1200

Issue  
 No. Date

Revisions  
 No. Date

ARCHITECTURAL  
 SITE PLAN

Date  
 05.07.2018  
 Principal In Charge  
 SRK

Project Architect  
 MMR  
 Approved  
 MMR

Drawn  
 JCLN  
 Job No.  
 16322-01

Scale  
 1" = 20'-0"

Drawing No.  
**A1**

DPD MODIFICATION

WESTLAWN REVITALIZATION - BUILDING 2.2  
 TORTI GALLAS AND PARTNERS, INC.



Issue	
No.	Date

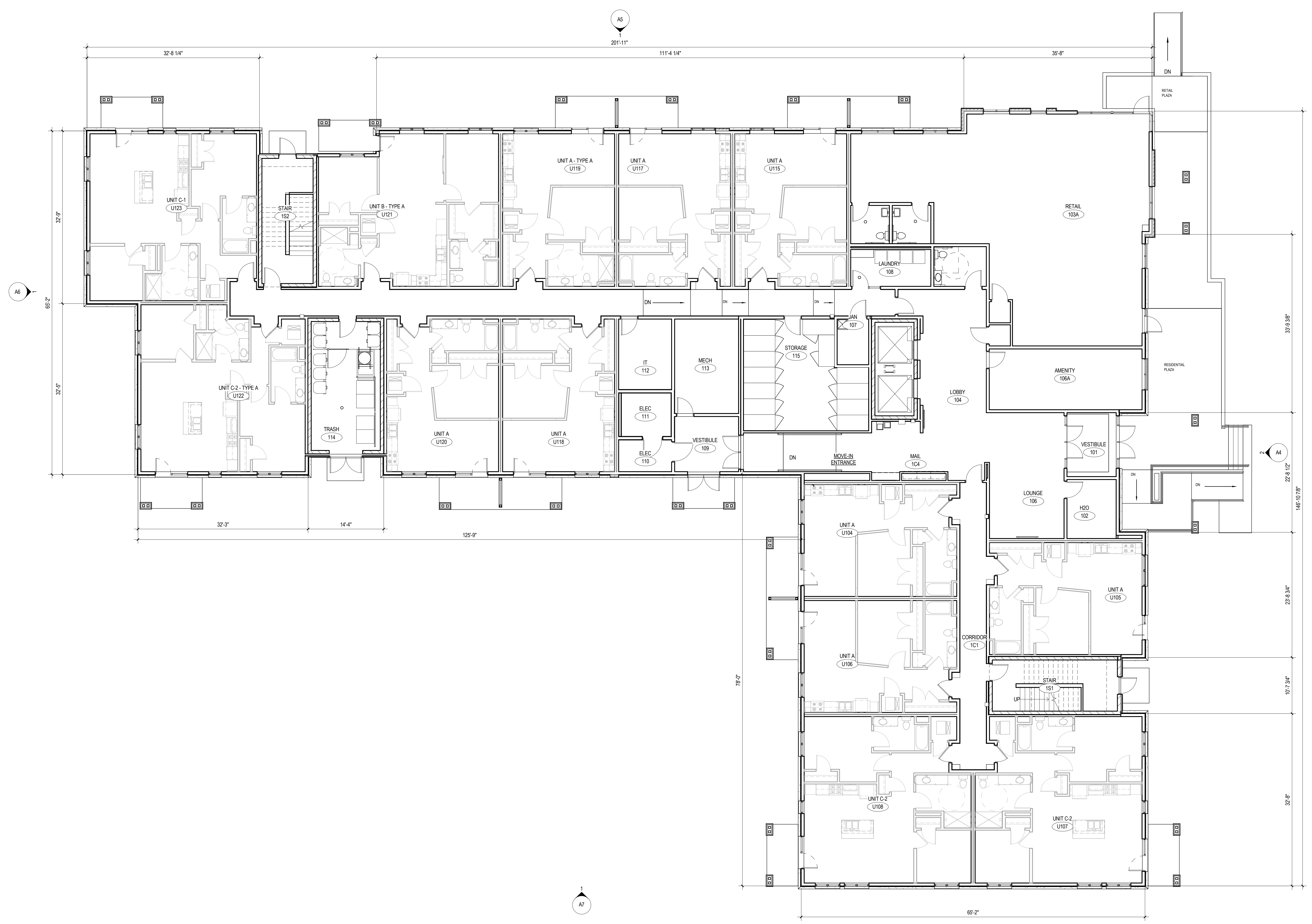
Revisions	
No.	Date

GROUND FLOOR  
PLAN

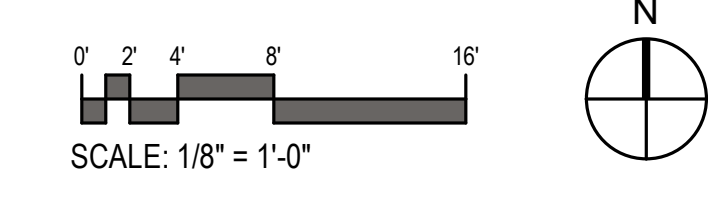
Date  
05.07.2018  
Principal In Charge  
SRK  
Project Architect  
MMR  
Approved  
MMR

Drawn  
JCLN  
Job No.  
16322-01  
Scale  
1/8" = 1'-0"  
Drawing No.  
**A2**

DPD MODIFICATION



GROUND FLOOR PLAN - PROPOSED



Issue	
No.	Date

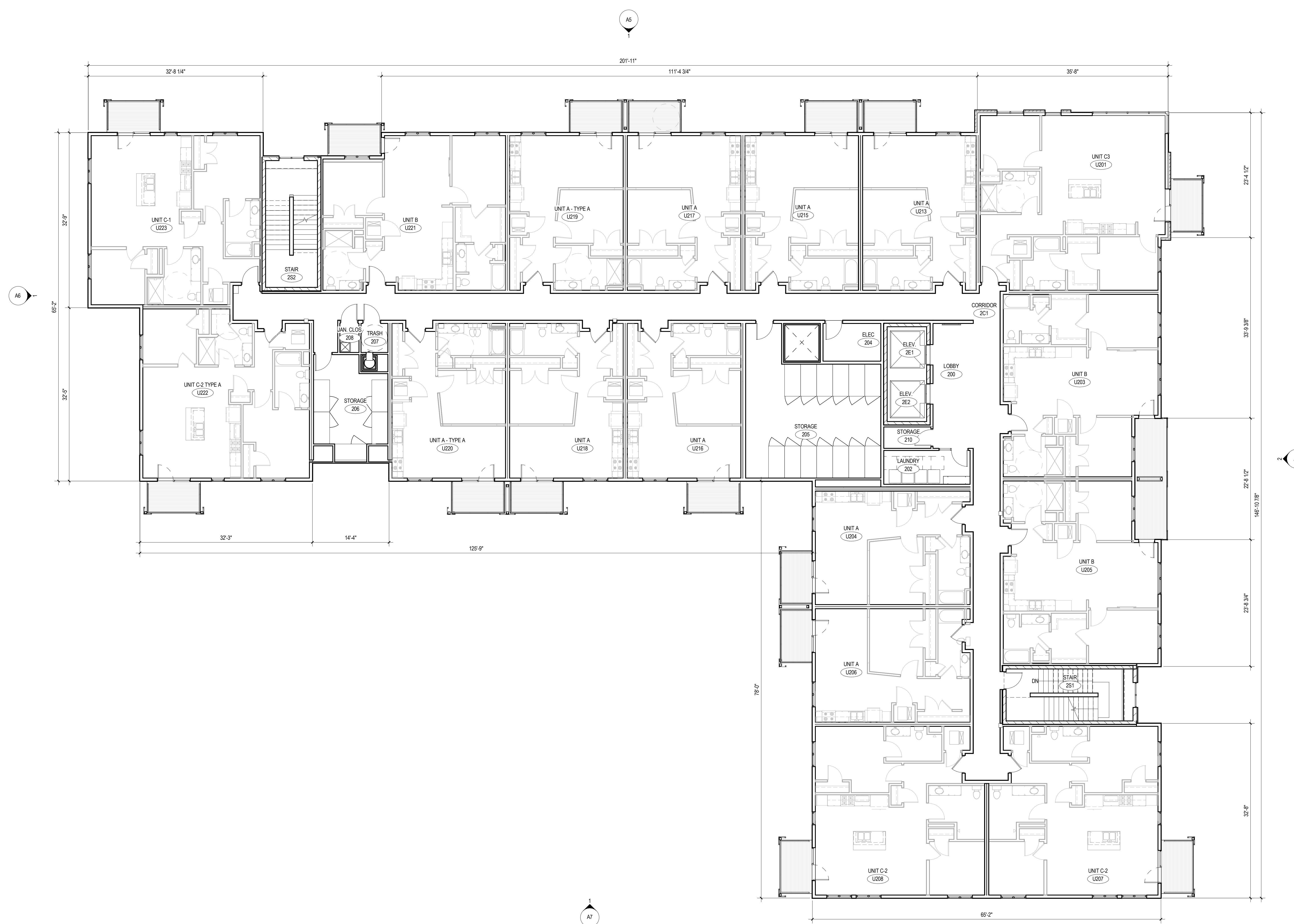
Revisions	
No.	Date

2ND AND 3RD  
FLOOR PLAN

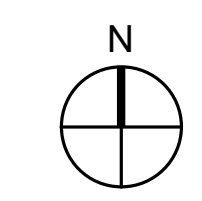
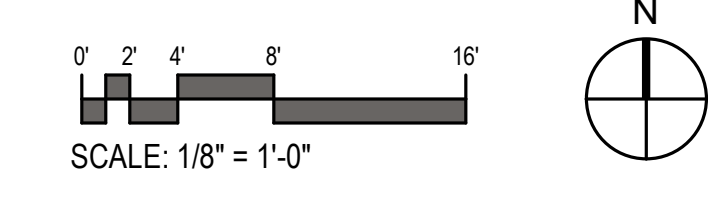
Date  
05.07.2018  
Principal In Charge  
SRK  
Project Architect  
MMR  
Approved  
MMR

Drawn  
JCLN  
Job No.  
16322-01  
Scale  
1/8" = 1'-0"

Drawing No.  
**A3**



2ND & 3RD FLOOR PLAN







EAST ELEVATION - PROPOSED



EAST ELEVATION - APPROVED

### MATERIAL LEGEND

- |   |   |
|---|---|
| <ul style="list-style-type: none"> <li>3.1 CONCRETE SLAB</li> <li>4.1 GROUND FACE MASONRY UNIT</li> <li>4.2 PRECAST CONCRETE SILL</li> <li>4.3 PRECAST CONCRETE BANDING</li> <li>4.4 PRECAST CONCRETE</li> <li>4.5 BRICK</li> <li>4.6 BRICK GARDEN WALL WITH STONE CAP</li> <li>4.7 CAST STONE</li> <li>5.1 PREFABRICATED METAL BALCONY</li> <li>5.2 METAL COPING</li> <li>5.3 METAL PANEL</li> <li>5.4 METAL RAILING</li> <li>5.5 METAL RAILING</li> <li>5.6 PERFORATED METAL PANEL</li> <li>6.1 EXTERIOR COMPOSITE FASCIA</li> <li>6.2 EXTERIOR COMPOSITE RAKE</li> <li>6.3 EXTERIOR COMPOSITE SUB-RAKE TRIM</li> <li>6.4 EXTERIOR COMPOSITE WRAPPED PT WD COLUMN</li> <li>6.5 EXTERIOR COMPOSITE TRIM</li> <li>6.6 CEMENTITIOUS FIBER BOARD BANDBOARD TRIM</li> <li>6.7 EXTERIOR COMPOSITE WINDOW HEAD TRIM</li> <li>6.8 WOOD BRACKET</li> <li>6.9 PTD. TREATED EXTERIOR COMPOSITE TRIM RAILING</li> <li>6.10 3'-6" PTD WD TRASH ENCLOSURE FENCE</li> <li>6.11 EXPOSED RAFTER TAIL</li> <li>6.12 WOOD SCREEN WALL</li> </ul> | <ul style="list-style-type: none"> <li>7.1 ARCHITECTURAL GRADE ASPHALT SHINGLES</li> <li>7.2 RIDGE VENT</li> <li>7.35 "A" STYLE PREFINISHED METAL GUTTER</li> <li>7.4 PREFINISHED METAL DOWNSPOUT</li> <li>7.5 FIBER CEMENT SHINGLE SIDING</li> <li>7.6 FIBER CEMENT LAP SIDING</li> <li>7.7 FIBER CEMENT LAP SIDING</li> <li>7.8 FIBER CEMENT LAP SIDING</li> <li>7.9 FIBER CEMENT LAP SIDING</li> <li>7.10 PREMANUFACTURED LOUVER</li> <li>7.11 PREFINISHED METAL FLASHING (INSULATION COVER)</li> <li>7.12 STANDING SEAM METAL ROOF</li> <li>7.13 FIBER CEMENT PANEL</li> <li>7.14 FIBER CEMENT LAP SIDING</li> <li>7.15 MEMBRANE ROOF</li> <li>7.16 PREFINISHED COMPOSITE PANEL</li> <li>7.17 WOOD LOOK FIBER CEMENT PANEL</li> <li>8.1 FIBERGLASS WINDOW</li> <li>8.2 PAINTED FIBERGLASS ENTRY DOOR</li> <li>8.3 PAINTED FIBERGLASS REAR ENTRY DOOR</li> <li>8.4 PAINTED FIBERGLASS STORAGE CLOSET DOOR</li> <li>8.5 VINYL WINDOW</li> <li>8.6 STOREFRONT WINDOW</li> <li>16.1 WALL MOUNTED EXTERIOR LIGHT FIXTURE AT FRONT ENTRY</li> <li>16.2 WALL MOUNTED EXTERIOR LIGHT FIXTURE AT REAR DOOR</li> <li>16.3 HOUSE NUMBER (ALL HOUSE NUMBER LOCATION TO BE COORDINATED WITH LOCAL JURISDICTION FIRE MARSHALL)</li> <li>16.4 WALL MOUNTED MAILBOX</li> <li>32.1 GABION GARDEN WALL</li> </ul> |
|---|---|





NORTH ELEVATION - PROPOSED

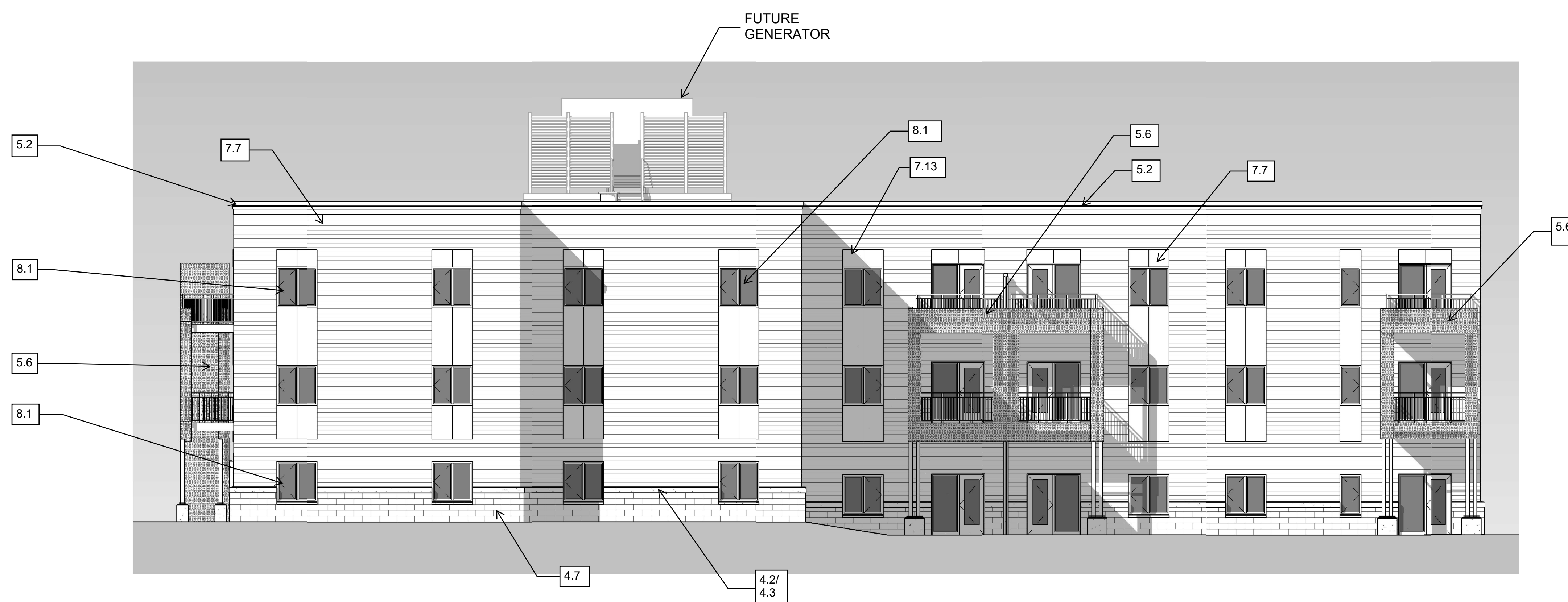


NORTH ELEVATION - APPROVED

### MATERIAL LEGEND

- |  |   |
|--|---|
| 3.1 CONCRETE SLAB                                | 7.1 ARCHITECTURAL GRADE ASPHALT SHINGLES  |
| 4.1 GROUND FACE MASONRY UNIT                     | 7.2 RIDGE VENT  |
| 4.2 PRECAST CONCRETE SILL                        | 7.35 "A" STYLE PREFINISHED METAL GUTTER   |
| 4.3 PRECAST CONCRETE BANDING                     | 7.4 PREFINISHED METAL DOWNSPOUT   |
| 4.4 PRECAST CONCRETE                             | 7.5 FIBER CEMENT SHINGLE SIDING   |
| 4.5 BRICK  | 7.6 FIBER CEMENT LAP SIDING   |
| 4.6 BRICK GARDEN WALL WITH STONE CAP             | 7.7 FIBER CEMENT LAP SIDING   |
| 4.7 CAST STONE                                   | 7.8 FIBER CEMENT LAP SIDING   |
| 4.8 PREFABRICATED METAL BALCONY                  | 7.9 FIBER CEMENT LAP SIDING   |
| 5.1 PREFABRICATED METAL BALCONY                  | 7.10 PREMANUFACTURED LOUVER   |
| 5.2 METAL COPING                                 | 7.11 PREFINISHED METAL FLASHING (INSULATION COVER)  |
| 5.3 METAL PANEL                                  | 7.12 STANDING SEAM METAL ROOF   |
| 5.4 METAL CANOPY                                 | 7.13 FIBER CEMENT PANEL   |
| 5.5 METAL RAILING                                | 7.14 FIBER CEMENT LAP SIDING  |
| 5.6 PERFORATED METAL PANEL                       | 7.15 MEMBRANE ROOF  |
| 6.1 EXTERIOR COMPOSITE FASCIA                    | 7.16 PREFINISHED COMPOSITE PANEL  |
| 6.2 EXTERIOR COMPOSITE RAKE                      | 7.17 WOOD LOOK FIBER CEMENT PANEL   |
| 6.3 EXTERIOR COMPOSITE SUB-RAKE TRIM             | 8.1 FIBERGLASS WINDOW   |
| 6.4 EXTERIOR COMPOSITE WRAPPED PT WD COLUMN      | 8.2 PAINTED FIBERGLASS ENTRY DOOR   |
| 6.5 EXTERIOR COMPOSITE TRIM                      | 8.3 PAINTED FIBERGLASS REAR ENTRY DOOR  |
| 6.6 CEMENTITIOUS FIBER BOARD BANDBOARD TRIM      | 8.4 PAINTED FIBERGLASS STORAGE CLOSET DOOR  |
| 6.7 EXTERIOR COMPOSITE WINDOW HEAD TRIM          | 8.5 VINYL WINDOW  |
| 6.8 WOOD BRACKET                                 | 8.6 STOREFRONT WINDOW   |
| 6.9 PTD. TREATED EXTERIOR COMPOSITE TRIM RAILING | 16.1 WALL MOUNTED EXTERIOR LIGHT FIXTURE AT FRONT ENTRY   |
| 6.10 3'-6" PTD WD TRASH ENCLOSURE FENCE          | 16.2 WALL MOUNTED EXTERIOR LIGHT FIXTURE AT REAR DOOR   |
| 6.11 EXPOSED RAFTER TAIL                         | 16.3 HOUSE NUMBER (ALL HOUSE NUMBER LOCATION TO BE COORDINATED WITH LOCAL JURISDICTION FIRE MARSHALL) |
| 6.12 WOOD SCREEN WALL                            | 16.4 WALL MOUNTED MAILBOX   |
|  | 32.1 GABION GARDEN WALL   |





WEST ELEVATION - PROPOSED



WEST ELEVATION - APPROVED

**MATERIAL LEGEND**

- |  |   |
|--|---|
| 3.1 CONCRETE SLAB                                | 7.1 ARCHITECTURAL GRADE ASPHALT SHINGLES  |
| 4.1 GROUND FACE MASONRY UNIT                     | 7.2 RIDGE VENT  |
| 4.2 PRECAST CONCRETE SILL                        | 7.35 "A" STYLE PREFINISHED METAL GUTTER   |
| 4.3 PRECAST CONCRETE BANDING                     | 7.4 PREFINISHED METAL DOWNSPOUT   |
| 4.4 PRECAST CONCRETE                             | 7.5 FIBER CEMENT SHINGLE SIDING   |
| 4.5 BRICK  | 7.6 FIBER CEMENT LAP SIDING   |
| 4.6 BRICK GARDEN WALL WITH STONE CAP             | 7.7 FIBER CEMENT LAP SIDING   |
| 4.7 CAST STONE                                   | 7.8 FIBER CEMENT LAP SIDING   |
| 5.1 PREFABRICATED METAL BALCONY                  | 7.9 FIBER CEMENT LAP SIDING   |
| 5.2 METAL COPING                                 | 7.10 PREMANUFACTURED LOUVER   |
| 5.3 METAL PANEL                                  | 7.11 PREFINISHED METAL FLASHING (INSULATION COVER)  |
| 5.4 METAL CANOPY                                 | 7.12 STANDING SEAM METAL ROOF   |
| 5.5 METAL RAILING                                | 7.13 FIBER CEMENT PANEL   |
| 5.6 PERFORATED METAL PANEL                       | 7.14 FIBER CEMENT LAP SIDING  |
| 6.1 EXTERIOR COMPOSITE FASCIA                    | 7.15 MEMBRANE ROOF  |
| 6.2 EXTERIOR COMPOSITE RAKE                      | 7.16 PREFINISHED COMPOSITE PANEL  |
| 6.3 EXTERIOR COMPOSITE SUB-RAKE TRIM             | 7.17 WOOD LOOK FIBER CEMENT PANEL   |
| 6.4 EXTERIOR COMPOSITE WRAPPED PT WD COLUMN      | 8.1 FIBERGLASS WINDOW   |
| 6.5 EXTERIOR COMPOSITE TRIM                      | 8.2 PAINTED FIBERGLASS ENTRY DOOR   |
| 6.6 CEMENTITIOUS FIBER BOARD BANDBOARD TRIM      | 8.3 PAINTED FIBERGLASS REAR ENTRY DOOR  |
| 6.7 EXTERIOR COMPOSITE WINDOW HEAD TRIM          | 8.4 PAINTED FIBERGLASS STORAGE CLOSET DOOR  |
| 6.8 WOOD BRACKET                                 | 8.5 VINYL WINDOW  |
| 6.9 PTD. TREATED EXTERIOR COMPOSITE TRIM RAILING | 8.6 STOREFRONT WINDOW   |
| 6.10 3'-6" PTD WD TRASH ENCLOSURE FENCE          | 16.1 WALL MOUNTED EXTERIOR LIGHT FIXTURE AT FRONT ENTRY   |
| 6.11 EXPOSED RAFTER TAIL                         | 16.2 WALL MOUNTED EXTERIOR LIGHT FIXTURE AT REAR DOOR   |
| 6.12 WOOD SCREEN WALL                            | 16.3 HOUSE NUMBER (ALL HOUSE NUMBER LOCATION TO BE COORDINATED WITH LOCAL JURISDICTION FIRE MARSHALL) |
|  | 16.4 WALL MOUNTED MAILBOX   |
|  | 32.1 GABION GARDEN WALL   |





SOUTH ELEVATION - PROPOSED



SOUTH ELEVATION - APPROVED

MATERIAL LEGEND

- |  |   |
|--|---|
| <ul style="list-style-type: none"> <li>3.1 CONCRETE SLAB</li> <li>4.1 GROUND FACE MASONRY UNIT</li> <li>4.2 PRECAST CONCRETE SILL</li> <li>4.3 PRECAST CONCRETE BANDING</li> <li>4.4 PRECAST CONCRETE</li> <li>4.5 BRICK</li> <li>4.6 BRICK GARDEN WALL WITH STONE CAP</li> <li>4.7 CAST STONE</li> <li>5.1 PREFABRICATED METAL BALCONY</li> <li>5.2 METAL COPING</li> <li>5.3 METAL PANEL</li> <li>5.4 METAL CANOPY</li> <li>5.5 METAL RAILING</li> <li>5.6 PERFORATED METAL PANEL</li> <li>6.1 EXTERIOR COMPOSITE FASCIA</li> <li>6.2 EXTERIOR COMPOSITE RAKE</li> <li>6.3 EXTERIOR COMPOSITE SUB-RAKE TRIM</li> <li>6.4 EXTERIOR COMPOSITE WRAPPED PT WD COLUMN</li> <li>6.5 EXTERIOR COMPOSITE TRIM</li> <li>6.6 CEMENTITIOUS FIBER BOARD BANDBOARD TRIM</li> <li>6.7 EXTERIOR COMPOSITE WINDOW HEAD TRIM</li> <li>6.8 WOOD BRACKET</li> <li>6.9 PTD. TREATED EXTERIOR COMPOSITE TRIM RAILING</li> <li>6.10 3'-6" PTD WD TRASH ENCLOSURE FENCE</li> <li>6.11 EXPOSED RAFTER TAIL</li> <li>6.12 WOOD SCREEN WALL</li> </ul> | <ul style="list-style-type: none"> <li>7.1 ARCHITECTURAL GRADE ASPHALT SHINGLES</li> <li>7.2 RIDGE VENT</li> <li>7.35 "A" STYLE PREFINISHED METAL GUTTER</li> <li>7.4 PREFINISHED METAL DOWNSPOUT</li> <li>7.5 FIBER CEMENT SHINGLE SIDING</li> <li>7.6 FIBER CEMENT LAP SIDING</li> <li>7.7 FIBER CEMENT LAP SIDING</li> <li>7.8 FIBER CEMENT LAP SIDING</li> <li>7.9 FIBER CEMENT LAP SIDING</li> <li>7.10 PREMANUFACTURED LOUVER</li> <li>7.11 PREFINISHED METAL FLASHING (INSULATION COVER)</li> <li>7.12 STANDING SEAM METAL ROOF</li> <li>7.13 FIBER CEMENT PANEL</li> <li>7.14 FIBER CEMENT LAP SIDING</li> <li>7.15 MEMBRANE ROOF</li> <li>7.16 PREFINISHED COMPOSITE PANEL</li> <li>7.17 WOOD LOOK FIBER CEMENT PANEL</li> <li>8.1 FIBERGLASS WINDOW</li> <li>8.2 PAINTED FIBERGLASS ENTRY DOOR</li> <li>8.3 PAINTED FIBERGLASS REAR ENTRY DOOR</li> <li>8.4 PAINTED FIBERGLASS STORAGE CLOSET DOOR</li> <li>8.5 VINYL WINDOW</li> <li>8.6 STOREFRONT WINDOW</li> <li>16.1 WALL MOUNTED EXTERIOR LIGHT FIXTURE AT FRONT ENTRY</li> <li>16.2 WALL MOUNTED EXTERIOR LIGHT FIXTURE AT REAR DOOR</li> <li>16.3 HOUSE NUMBER (ALL HOUSE NUMBER LOCATION TO BE COORDINATED WITH LOCAL JURISDICTION FIRE MARSHALL)</li> <li>16.4 WALL MOUNTED MAILBOX</li> <li>32.1 GABION GARDEN WALL</li> </ul> |
|--|---|

DPD MODIFICATION





NORTH EAST CORNER (NORTH ELEVATION) - PERSPECTIVE



NORTH EAST CORNER (EAST ELEVATION) - PERSPECTIVE

**WESTLAWN  
REVITALIZATION  
- BUILDING 2.2**

5545 66th Street  
Milwaukee, WI 53218

Owner  
Housing Authority of  
the City of Milwaukee  
414.266.3629

Torti Gallas and  
Partners, Inc.  
1300 Spring Street,  
4th Floor  
Silver Spring, MD 20910  
301.586.4800  
www.tortigallas.com

Local Architect  
Quorum Architects  
414.265.9265

Local Architect  
Eppstein Uhen  
Architects  
414.271.5350

Structural Engineer  
raSmith R.A. Smith  
National  
262.317.3279

Electrical Engineer  
Czamecki Engineering  
262.691.1010

MEP Engineer  
Thunderbird Engineering, Inc.  
414.352.2211

Civil Engineer  
raSmith R.A. Smith  
National  
262.317.3279

Landscape Architect  
AVRES Ayres Associates  
ASSOCIATES 608.443.1200

Issue  
No. Date

Revisions  
No. Date

RENDERING

Date  
05.07.2018

Principal In Charge  
SRK

Project Architect  
MMR

Approved  
MMR

Drawn  
JCLN

Job No.  
16322-01

Scale

Drawing No.  
**A8**

DPD MODIFICATION

TORTI GALLAS AND PARTNERS, INC.