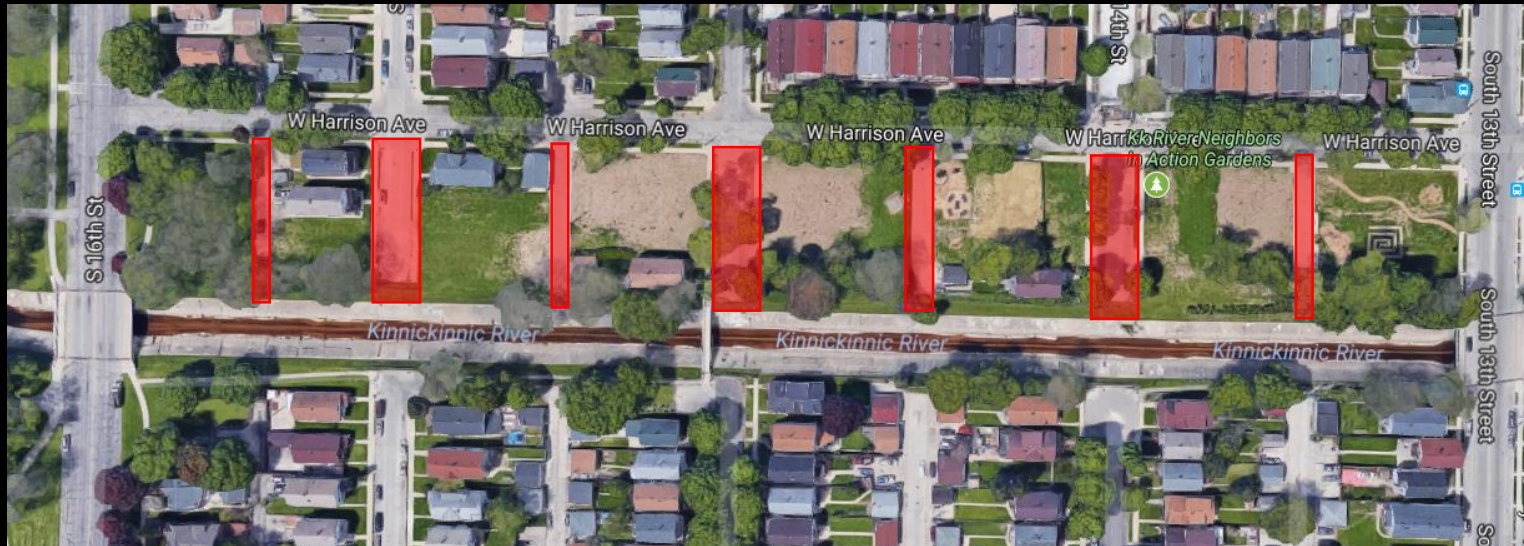
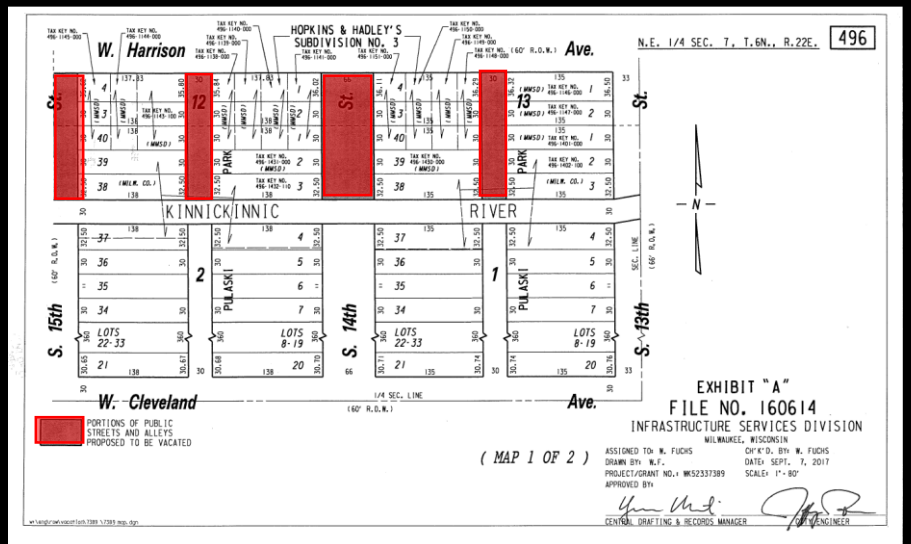
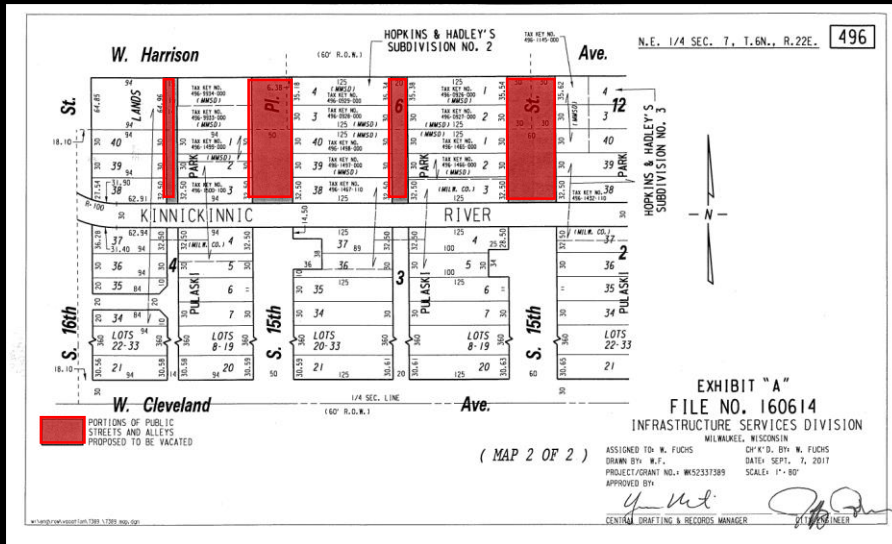


17. 13th – 16th Street Vacation

File No. 160614. Resolution to vacate various portions of streets and alleys in the area bounded by West Cleveland Avenue, West Harrison Avenue, South 13th Street and South 16th Street, in the 12th Aldermanic District.



Milwaukee Metropolitan Sewerage District Kinnickinnic River Watershed Restoration

Street/Alley Vacation Request S. 13th Street to W. 16th Street

City Public Works Commission May 16, 2018



KK River Watershed



**General Mitchell
International Airport**

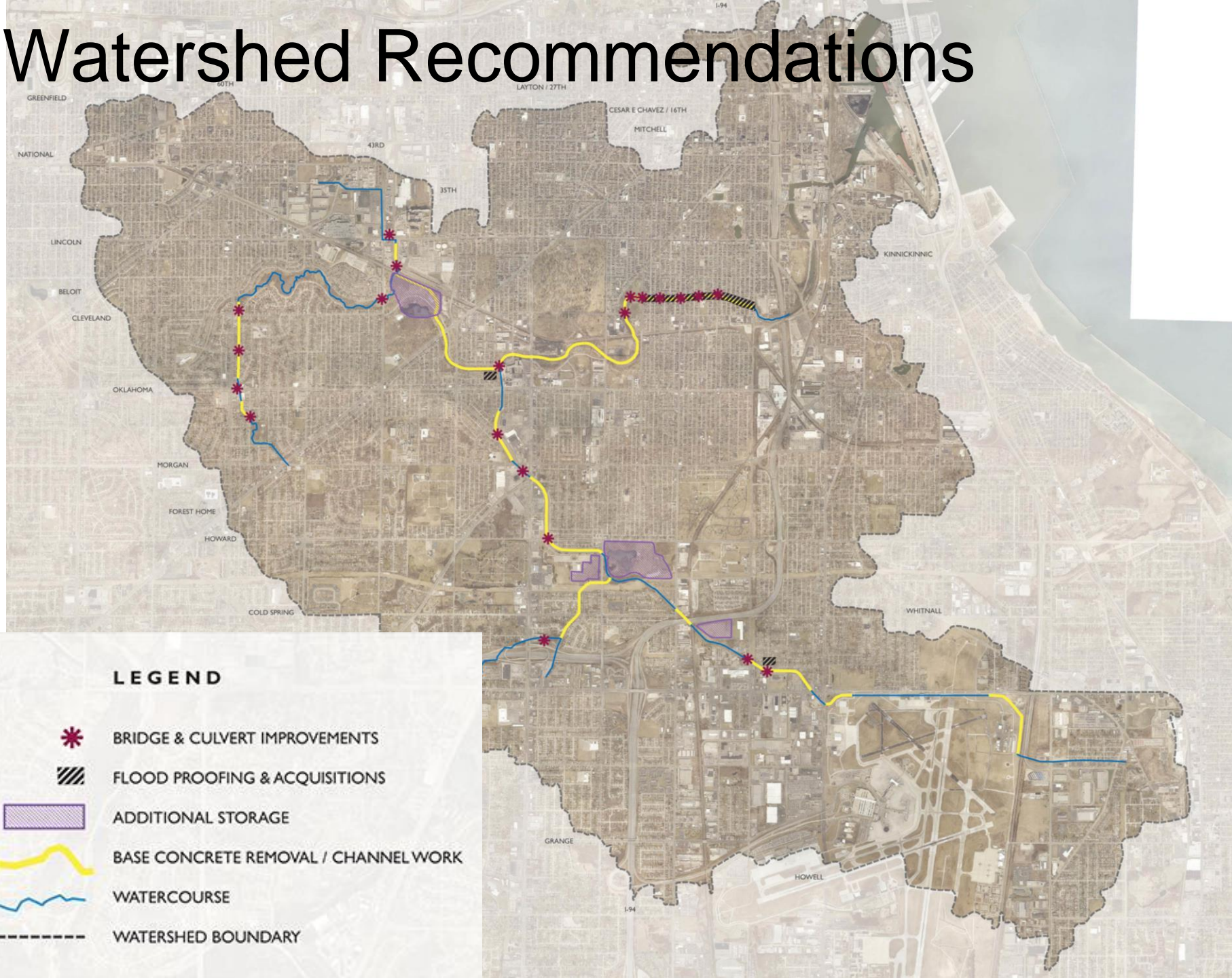
Flood Risk



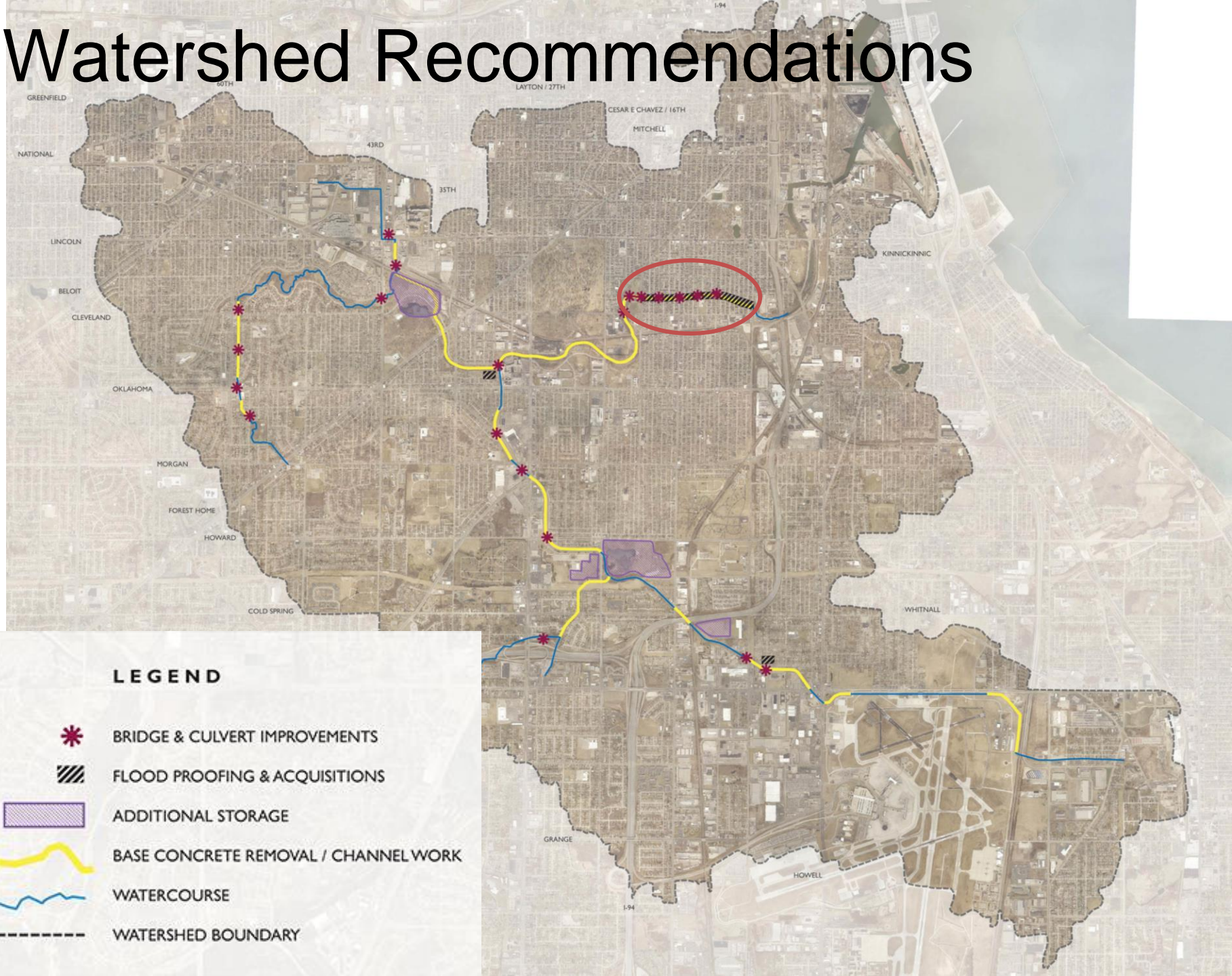
**668 properties located in
the 100-year floodplain**

Sources: Esri, HERE, DeLorme, USGS, Intermap, increment P Corp., NRCAN, Esri Japan, METI, Esri China (Hong Kong), Esri (Thailand), TomTom, MapmyIndia, © OpenStreetMap contributors, and the GIS User Community

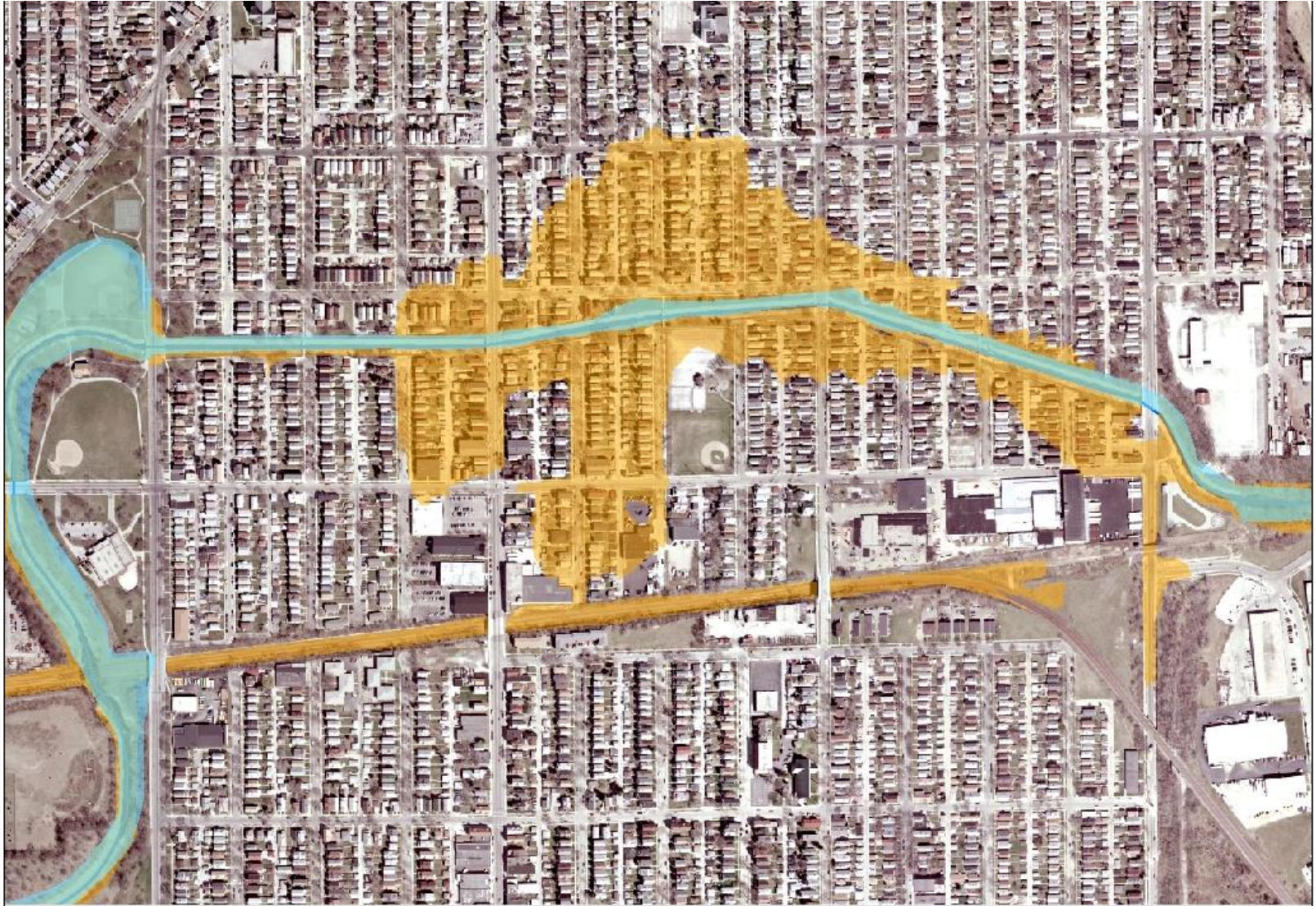
Watershed Recommendations



Watershed Recommendations



KK River: 6th – 16th – Floodplain



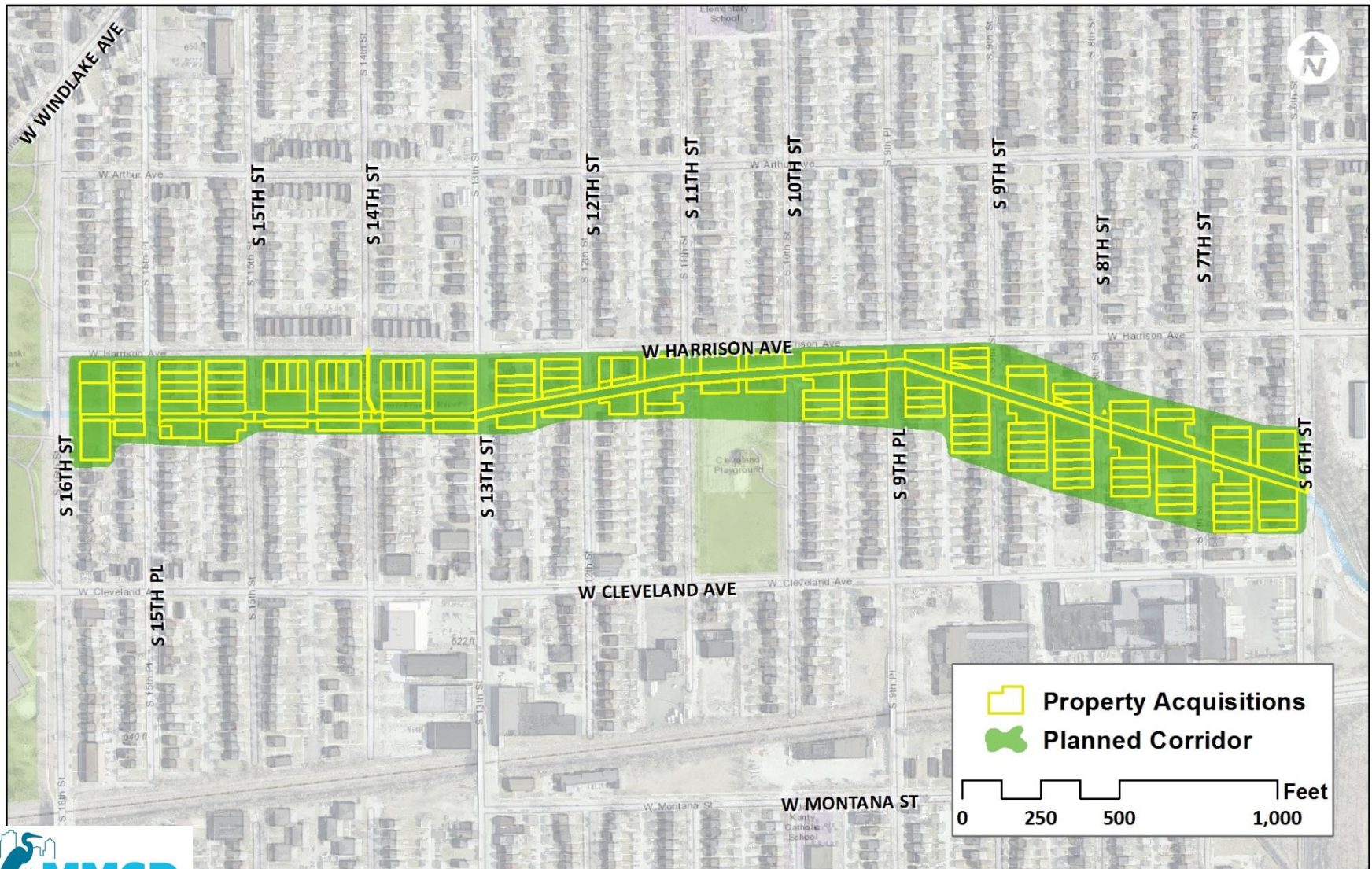
KK River 6th – 16th Existing Conditions



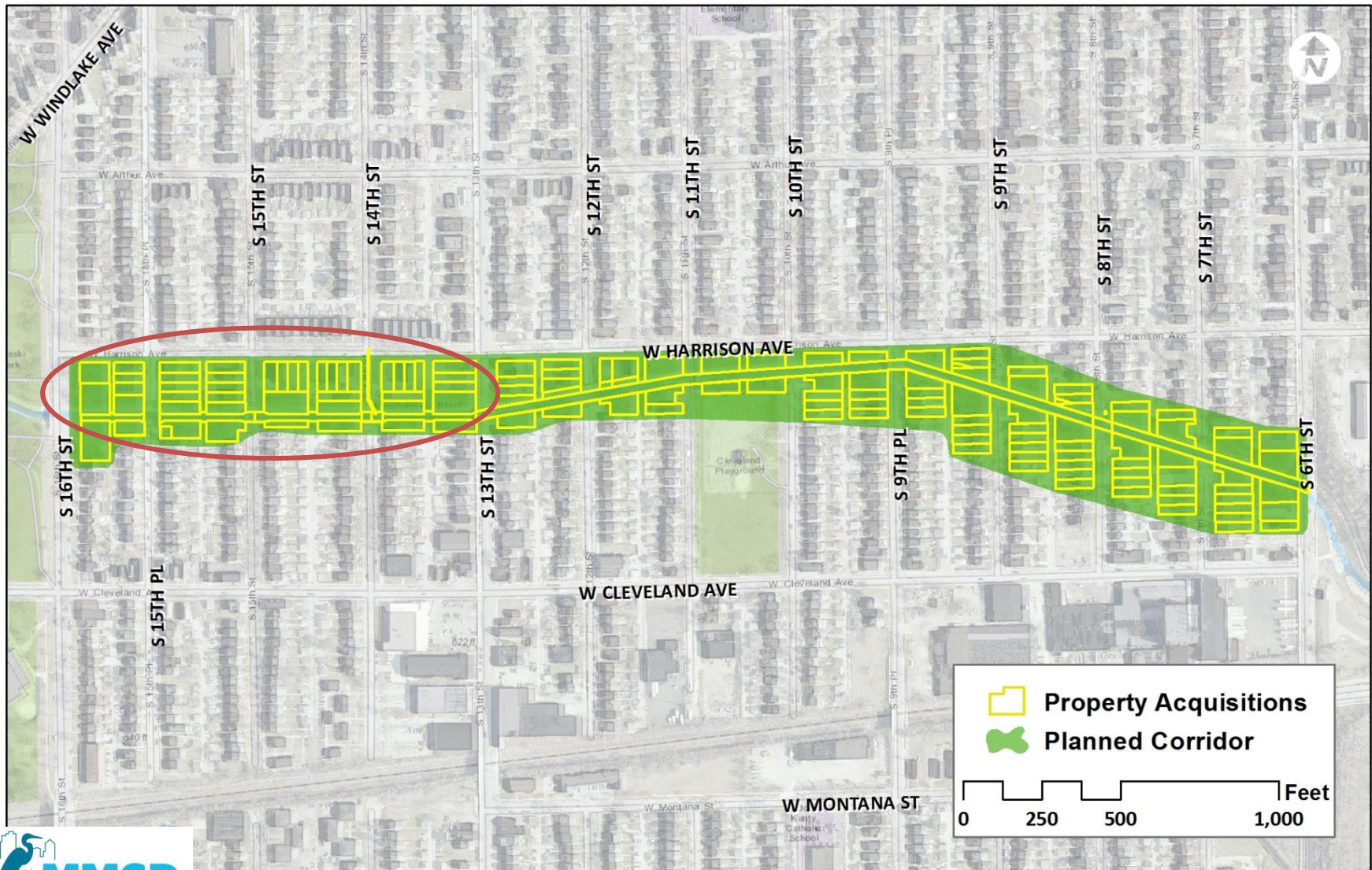
KK River: 6th – 16th – Future Vision



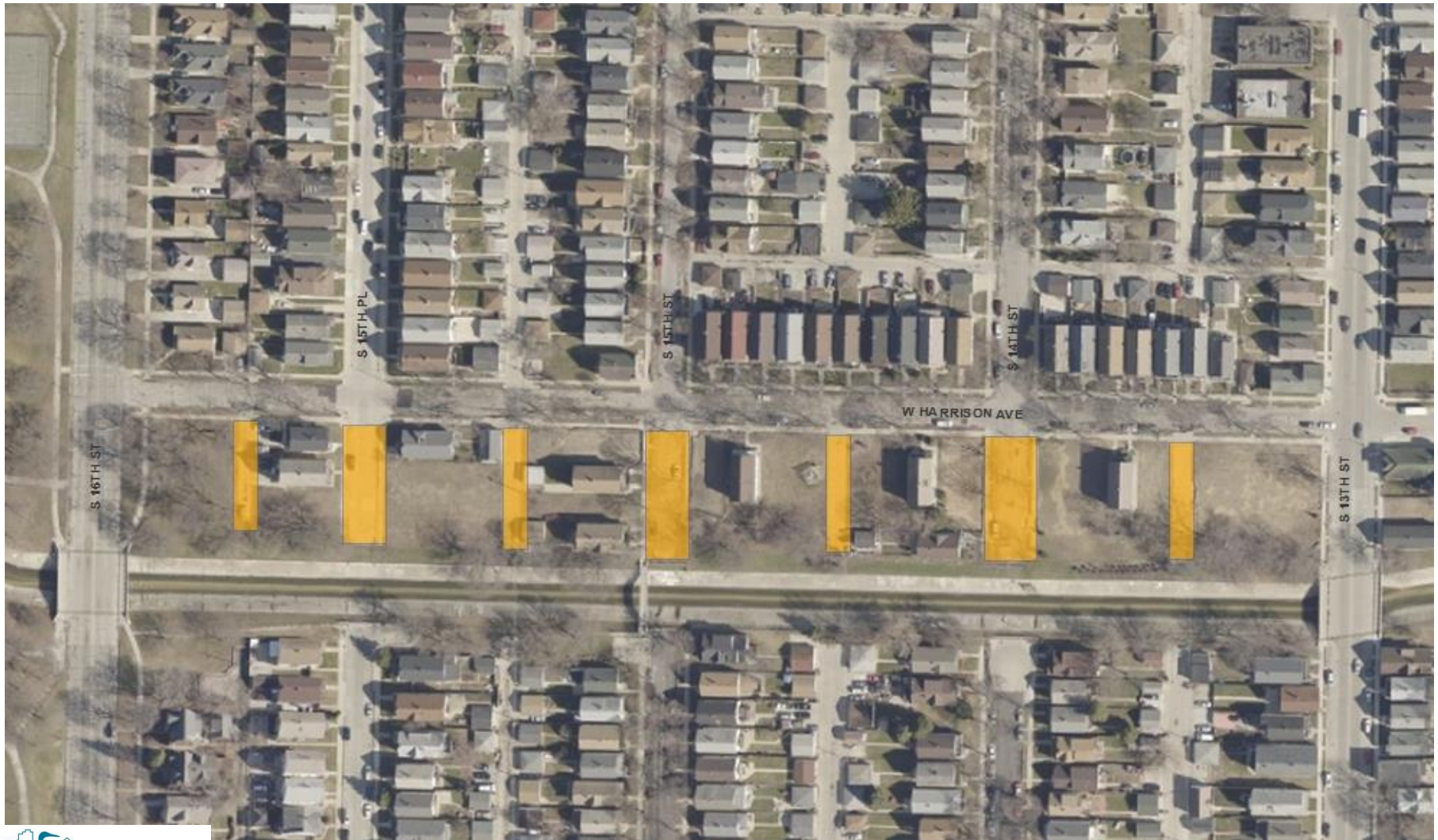
KK River: 6th – 16th - Recommendation



KK River: 6th – 16th – Acquisitions



Street/Alley Vacations: 13th – 16th



QUESTIONS?

