

N.W. 1/4 SEC. 15, T.6N., R.22E.

540

(100' R.O.W.)

E. Oklahoma Ave.
SEC. LINE

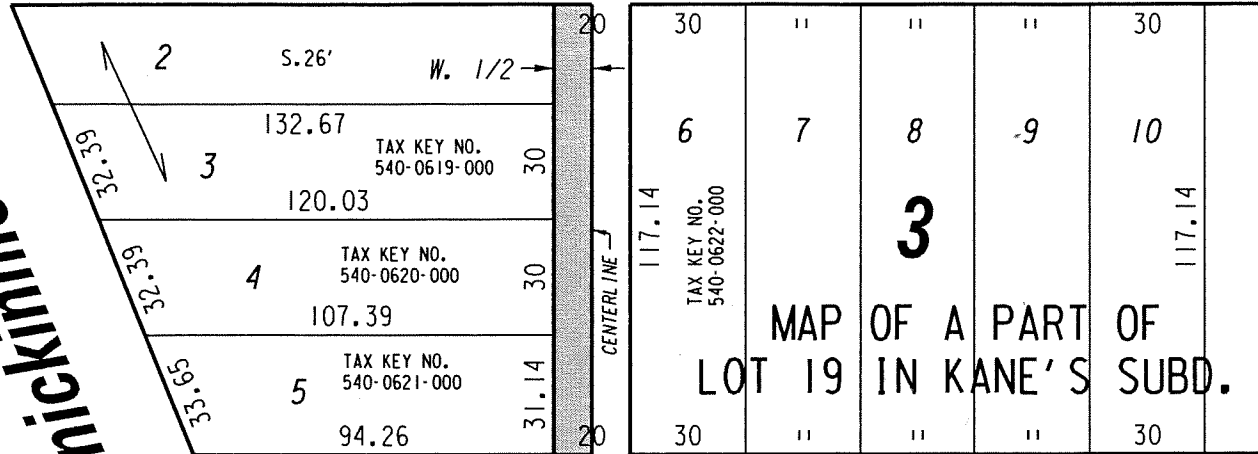
67

67

Ave.

(150' R.O.W.)

S. Kinnickinnic



MAP OF A PART OF LOT 19 IN KANE'S SUBD.

(S. Mabbett Ave.)



E. Euclid Ave.
(50' R.O.W.)

PUBLIC ALLEY PROPOSED TO BE VACATED

REVISED: MARCH 8, 2018
VACATION LIMITS REVISED

EXHIBIT "A"
FILE NO. 170796
INFRASTRUCTURE SERVICES DIVISION
MILWAUKEE, WISCONSIN

ASSIGNED TO: W. FUCHS
DRAWN BY: W.F.
PROJECT/GRANT NO.: WK52337405
APPROVED BY:

CH'K'D. BY: W. FUCHS
DATE: OCT. 17, 2017
SCALE: 1" = 50'

John V. ...

[Signature]

CENTRAL DRAFTING & RECORDS MANAGER

CITY ENGINEER