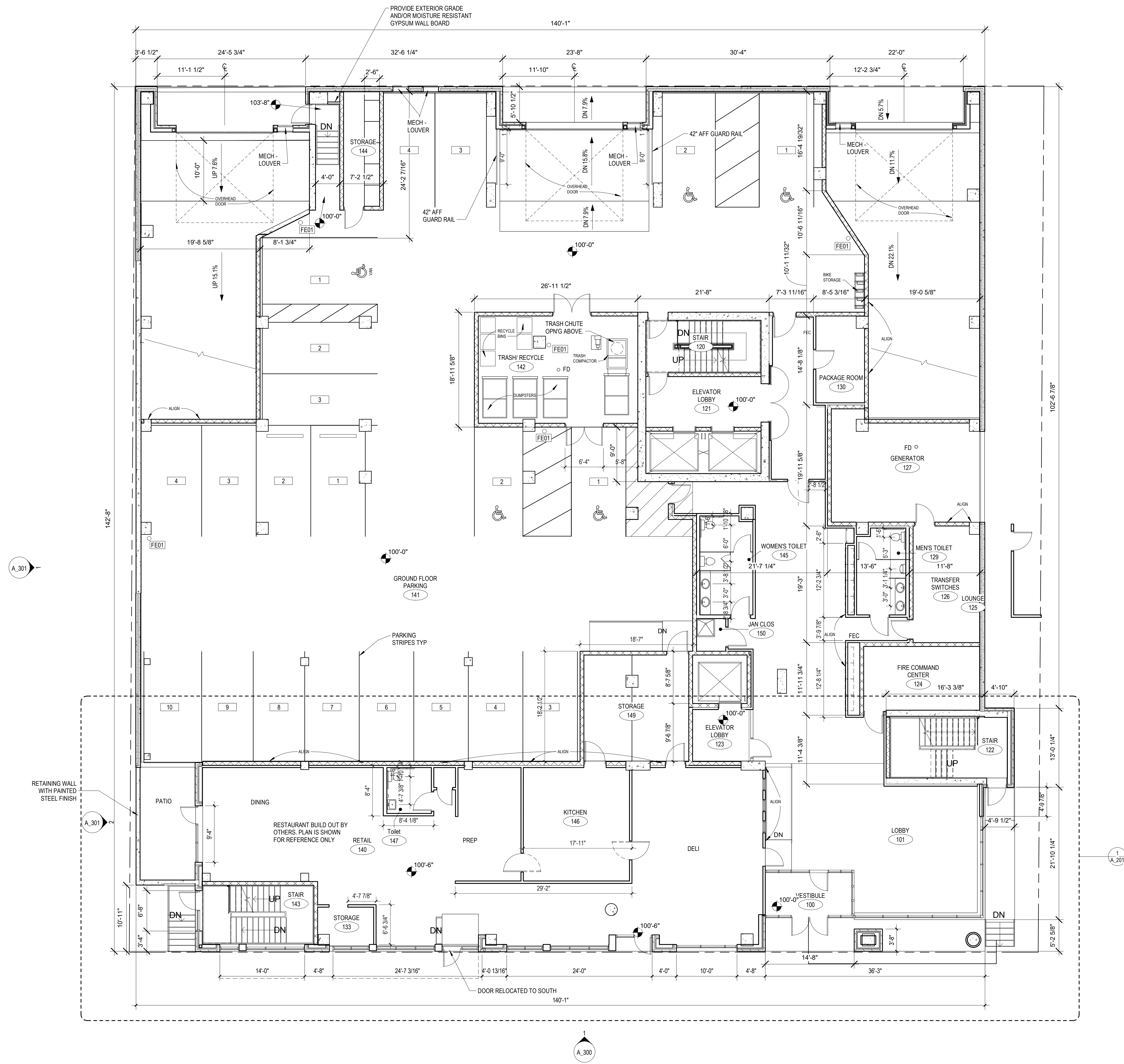
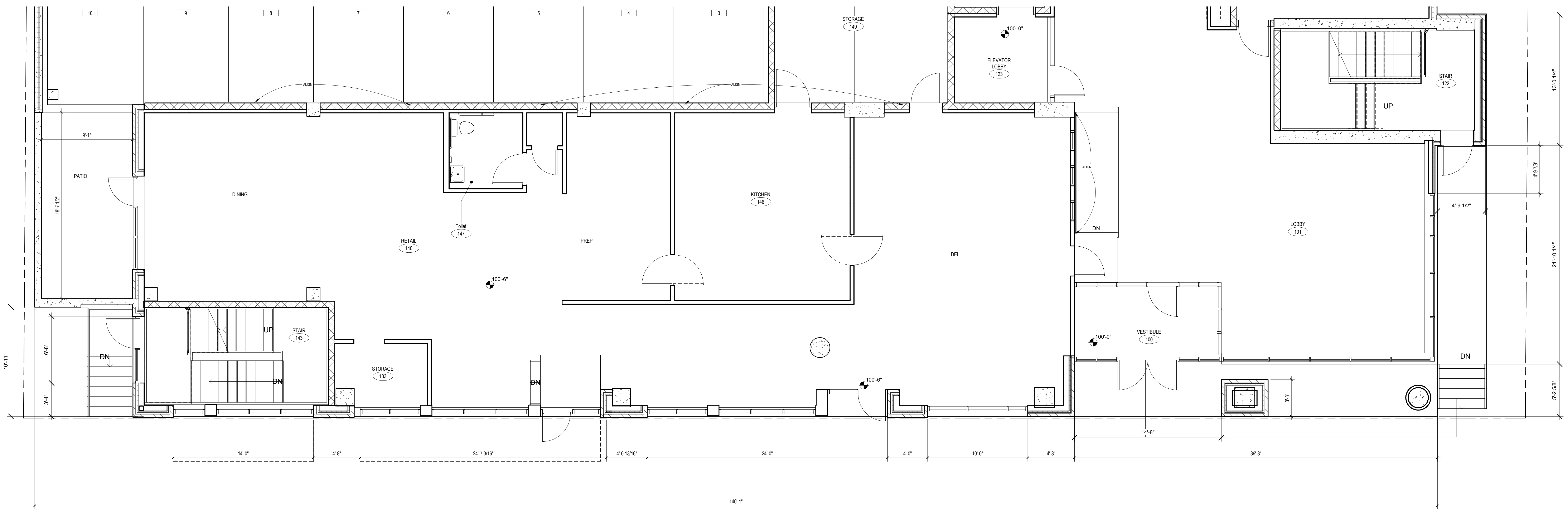

**1** ARCHITECTURAL SITE PLAN  
 1/16" = 1'-0"

# A100 - ARCHITECTURAL SITE PLAN



1 OVER ALL PLAN  
1/8" = 1'-0"

# A200 - OVERALL PLAN



A.301

A.300

1 ENLARGED PLAN  
1/4" = 1'-0"

# A201 - ENLARGED PLAN

| MATERIAL LIST |                                |   |  |                              |
|---------------|--------------------------------|---|--|------------------------------|
| CODE          | MATERIAL                       | MATERIAL  | DESCRIPTION  | BASIS OF DESIGN MANUFACTURER |
| 1             | CONCRETE - CAST-IN-PLACE       | -   | -  | -                            |
| 2             | PRECAST PANEL                  | CONCRETE  | SEE ELEVATIONS (DETAILS FOR REVEAL PATTERNS)                   | -                            |
| 3             | MASONRY - BRICK                | MODULAR BRICK   | OBSIDIAN MATTE   | INTERSTATE                   |
| 4             | METAL PANEL                    | DOORS   | MATCH WINDOW WALL SYSTEM                                       | -                            |
| 5             | MASONRY - CAST STONE           | 32" X 8"  | SMOOTH COLOR BUFF  | HERITAGE CAST STONE          |
| 6             | METAL PANEL                    | .040 ALUMINUM   | MX 3.0   | MORIN MATRIX                 |
| 7             | METAL PANEL - HORIZONTAL       | 22 GA GALVALUME   | MX 1.0 ASCOT WHITE   | MORIN MATRIX                 |
| 8             | METAL PANEL - VERTICAL         | 22 GA GALVALUME   | MX 1.0 MEDIUM GRAY   | MORIN MATRIX                 |
| 9             | PREFINISH METAL COPING         | 24 G GALVANIZED 2 PIECE COUNTER FLASHING & 22 G CONTINUOUS CLEATS | KYNAR FINISH - COLOR 1   | -                            |
| 10            | PREFINISH METAL COPING         | 24 G GALVANIZED 2 PIECE COUNTER FLASHING & 22 G CONTINUOUS CLEATS | KYNAR FINISH - COLOR 2   | -                            |
| 11            | METAL PANEL - CANOPY           | -   | -  | -                            |
| 12            | METAL - ALUMINUM               | ALUMINUM  | -  | -                            |
| 13            | METAL PANEL - WOOD             | SOFFIT WOOD GRAIN   | MAHOGANY 102311 6" V GROOVE                                    | LONGBOARD                    |
| 14            | NOT USED                       | -   | -  | -                            |
| 15            | NOT USED                       | -   | -  | -                            |
| 16            | RAILING BALCONY GLASS          | GLASS RAILING   | GAR-R8 TOP RAIL 1/2" TEMPERED GLASS WHERE REQ'D FOR WIND LOADS | GRECO                        |
| 17            | WINDOW                         | ALUM. PUNCH   | TR-2510, TR-2800, TR-2810                                      | KAWNEER TRACO                |
| 18            | STOREFRONT GLAZING SYSTEM      | GLASS & ALUM FRAMING  | VERSAGLAZE 451/451T  | KAWNEER TRIFAB               |
| 19            | CONTROL JOINT                  | -   | -  | -                            |
| 20            | SCUPPER                        | PRE FINISHED METAL  | -  | -                            |
| 21            | NOT USED                       | -   | -  | -                            |
| 22            | RAILING - ORNAMENTAL, PAINTING | STEEL   | SEE CIVIL DRAWINGS   | -                            |
| 23            | NOT USED                       | -   | -  | -                            |
| 24            | METAL SOFFIT                   | -   | -  | -                            |
| 25            | OVERHEAD DOOR                  | -   | MODEL 3295 GLASS & CLEAR ANODCHD ALUM.                         | -                            |
| 26            | WINDOW WALL                    | ALUMINUM FULL-VIEW  | TR-700 SERIES  | KAWNEER TRACO                |
| 27            | PRE FABRICATED COLUMN COVER    | ALUMINUM  | --   | FRY REGLET                   |



**1** WEST ELEVATION  
1/8" = 1'-0"

# A300 - WEST ELEVATION

| MATERIAL LIST |                               |   |  |                              |
|---------------|-------------------------------|---|--|------------------------------|
| CODE          | MATERIAL                      | MATERIAL  | DESCRIPTION  | BASIS OF DESIGN MANUFACTURER |
| 1             | CONCRETE - CAST-IN-PLACE      | -   | -  | -                            |
| 2             | PRECAST PANEL                 | CONCRETE  | SEE ELEVATIONS (DETAILS FOR REVEAL PATTERNS)                   | -                            |
| 3             | MASONRY - BRICK               | MODULAR BRICK   | OBSDIAN MATTE  | INTERSTATE                   |
| 4             | METAL PANEL                   | DOORS   | MATCH WINDOW WALL SYSTEM                                       | -                            |
| 5             | MASONRY - CAST STONE          | 32" X 8"  | SMOOTH COLOR BUFF  | HERITAGE CAST STONE          |
| 6             | METAL PANEL                   | .040 ALUMINUM   | MX 3.0   | MORIN MATRIX                 |
| 7             | METAL PANEL - HORIZONTAL      | 22 GA GAVALUME  | MX 1.0 ASCOT WHITE   | MORIN MATRIX                 |
| 8             | METAL PANEL - VERTICAL        | 22 GA GAVALUME  | MX 1.0 MEDIUM GRAY   | MORIN MATRIX                 |
| 9             | PREFINISH METAL COPING        | 24 G GALVANIZED 2 PIECE COUNTER FLASHING & 22 G CONTINUOUS CLEATS | KYNAR FINISH - COLOR 1   | -                            |
| 10            | PREFINISH METAL COPING        | 24 G GALVANIZED 2 PIECE COUNTER FLASHING & 22 G CONTINUOUS CLEATS | KYNAR FINISH - COLOR 2   | -                            |
| 11            | METAL PANEL - CANOPY          | -   | -  | -                            |
| 12            | METAL - ALUMINUM              | ALUMINUM  | -  | -                            |
| 13            | METAL PANEL - WOOD            | SOFFIT WOOD GRAIN   | MAHOGANY 102311 6" V GROOVE                                    | LONGBOARD                    |
| 14            | NOT USED                      | -   | -  | -                            |
| 15            | NOT USED                      | -   | -  | -                            |
| 16            | RAILING BALCONY GLASS         | GLASS RAILING   | GAR-R8 TOP RAIL 1/2" TEMPERED GLASS WHERE REQ'D FOR WIND LOADS | GRECO                        |
| 17            | WINDOW                        | ALUM. PUNCH   | TR-2510 TR-2800 TR-2810  | KAWNEER-TRACO                |
| 18            | STOREFRONT GLAZING SYSTEM     | GLASS & ALUM FRAMING  | VERSAGLAZE 451/451T  | KAWNEER TRIFAB               |
| 19            | CONTROL JOINT                 | -   | -  | -                            |
| 20            | SCUPPER                       | PRE FINISHED METAL  | -  | -                            |
| 21            | NOT USED                      | -   | -  | -                            |
| 22            | RAILING- ORNAMENTAL, PAINTING | STEEL   | SEE CIVIL DRAWINGS   | -                            |
| 23            | NOT USED                      | -   | -  | -                            |
| 24            | METAL SOFFIT                  | -   | -  | -                            |
| 25            | OVERHEAD DOOR                 | -   | MODEL 3295 GLASS & CLEAR ANODCHD ALUM.                         | -                            |
| 26            | WINDOW WALL                   | ALUMINUM FULL-VIEW  | TR-700 SERIES  | KAWNEER TRACO                |
| 27            | PRE FABRICATED COLUMN COVER   | ALUMINUM  | --   | FRY REGLET                   |



**2** PATIO NORTH ELEVATION  
1/8" = 1'-0"



**1** NORTH ELEVATION  
1/8" = 1'-0"

# A301 - NORTH ELEVATION



**A400 - RENDERING**