



HVAC-GEN-18-00766

Certificate of Appropriateness

Milwaukee Historic Preservation Commission/200 E. Wells Street/Milwaukee, WI 53202/phone 414-286-5712/fax 414-286-3004

Property

1401 E. BRADY ST.

BRADY ST HD

Description of work

A small concession building with a kitchen was approved under this COA. The kitchen requires a hood and associated rooftop mechanical equipment. The roof area directly above the kitchen will house a make-up air unit along with an exhaust fan.

TKWA has placed the rooftop equipment in the Building Section drawings and computer model to verify parapet screening. The make-up air unit and exhaust unit are entirely screened by the approved parapet.

The exhaust extension duct extends approximately 1'-7" above the parapet. As seen in the computer models, the duct generally disappears when viewed from the street as well as when one is in close proximity.

Date issued

3/8/2018

PTS ID 114385 COA: HVAC for new construction

In accordance with the provisions of Section 320-21 (11) and (12) of the Milwaukee Code of Ordinances, the Milwaukee Historic Preservation Commission has issued a certificate of appropriateness for the work listed above. The work was found to be consistent with preservation guidelines. The following conditions apply to this certificate of appropriateness:

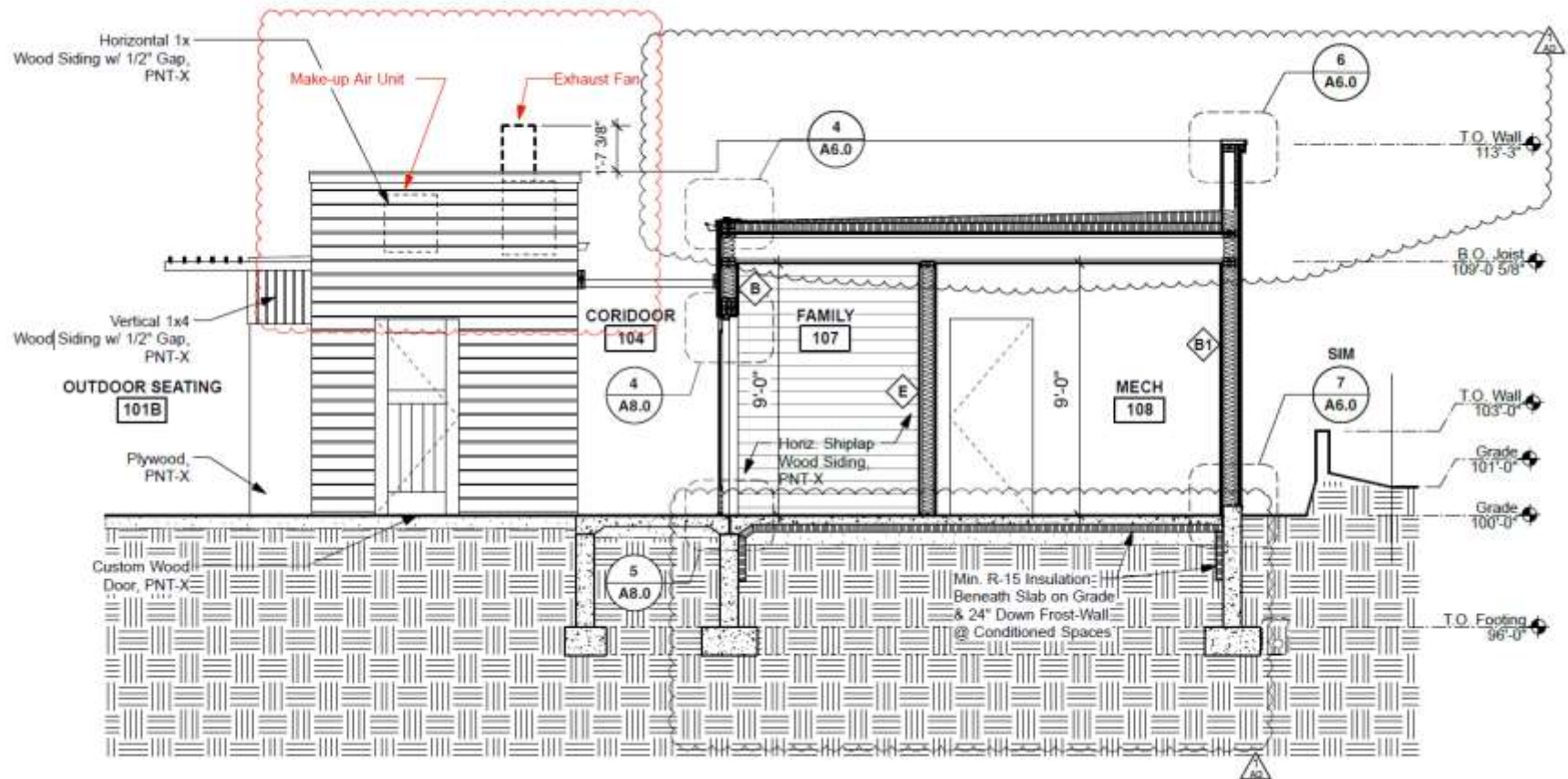
All equipment extending above parapet height must be painted such that no bare metal finishes are visible from any position on the ground. Equipment should be painted upwards from a point 3" below parapet height.

All work must be done in a craftsman-like manner, and must be completed within one year of the date this certificate was issued. Staff must approve any changes or additions to this certificate before work begins. Work that is not completed in accordance with this certificate may be subject to correction orders or citations. If you require technical assistance, please contact Historic Preservation staff as follows: Phone: (414) 286-5712 E-mail: hpc@milwaukee.gov.

If permits are required, you are responsible for obtaining them from the Milwaukee Development Center. If you have questions about permit requirements, please consult the Development Center's web site, www.milwaukee.gov/build, or call (414) 286-8210.

City of Milwaukee Historic Preservation Staff

Copies to: Development Center, Ald. Nik Kovac, Contractor





MODEL VIEW - PERSPECTIVE NEW GARAGE

Scale: NTS

White cube atop building on left represents exhaust fan unit.



1
A1.3

MODEL VIEW - PERSPECTIVE FROM EXISTING BAR

Scale: NTS



1
A1.2

MODEL VIEW - PERSPECTIVE FROM WARREN

Scale: NTS