

File No. 170406
DPD (previous) to DPD (new)
1550 North Prospect Avenue
August 2017

Legend

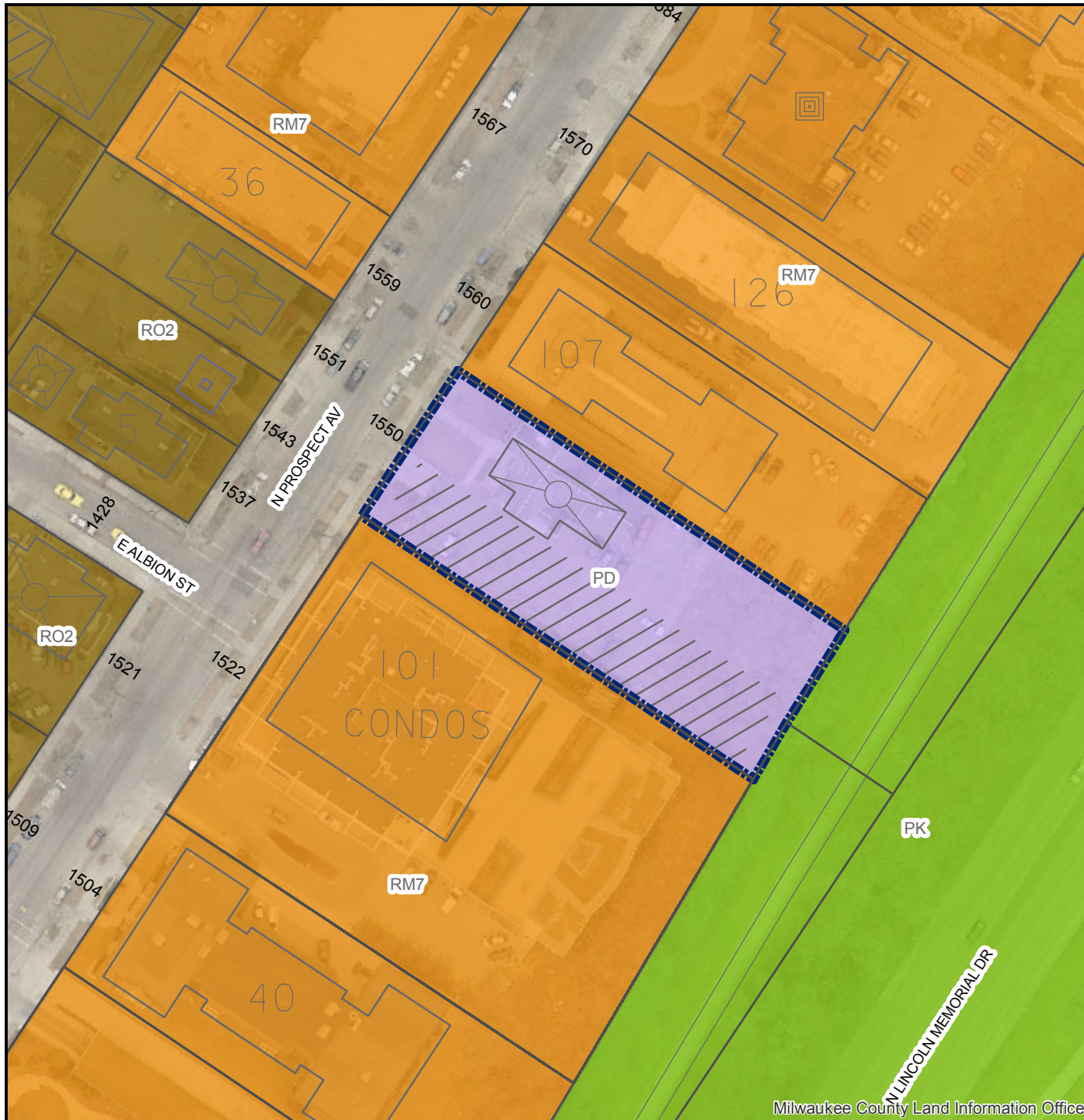


Zoning Change Boundary

Zoning

MAPCODE

- Commercial - Commercial Service
- Commercial - Neighborhood Shopping
- Commercial - Local Business
- Commercial - Regional Business
- Downtown
- Industrial - Office
- Industrial - Light
- Industrial - Mixed
- Industrial - Heavy
- Residential - Single Family
- Residential - Two Family
- Residential - Multi-Family
- Residential - Residence and Office
- Special - Parks
- Special - Institutional
- Special - Planned Development
- Special - Redevelopment District



Milwaukee County Land Information Office