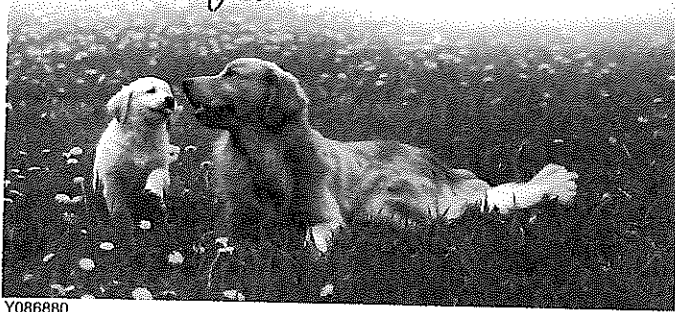


8-29-17
A proud supporter of Guiding Eyes for the Blind

Ms. Mary J Johnson

Tony Dear -

It would be difficult to attend the meeting. Have enclosed a list as to why I support your efforts - not the effort of people who live elsewhere. Was hospitalized. Am on oxygen - doing fine.



Y086880

Condo's and apartments we already have before building more. If I wanted to live in a concrete jungle I'd move downtown.

Thanks,
Mary Jill

