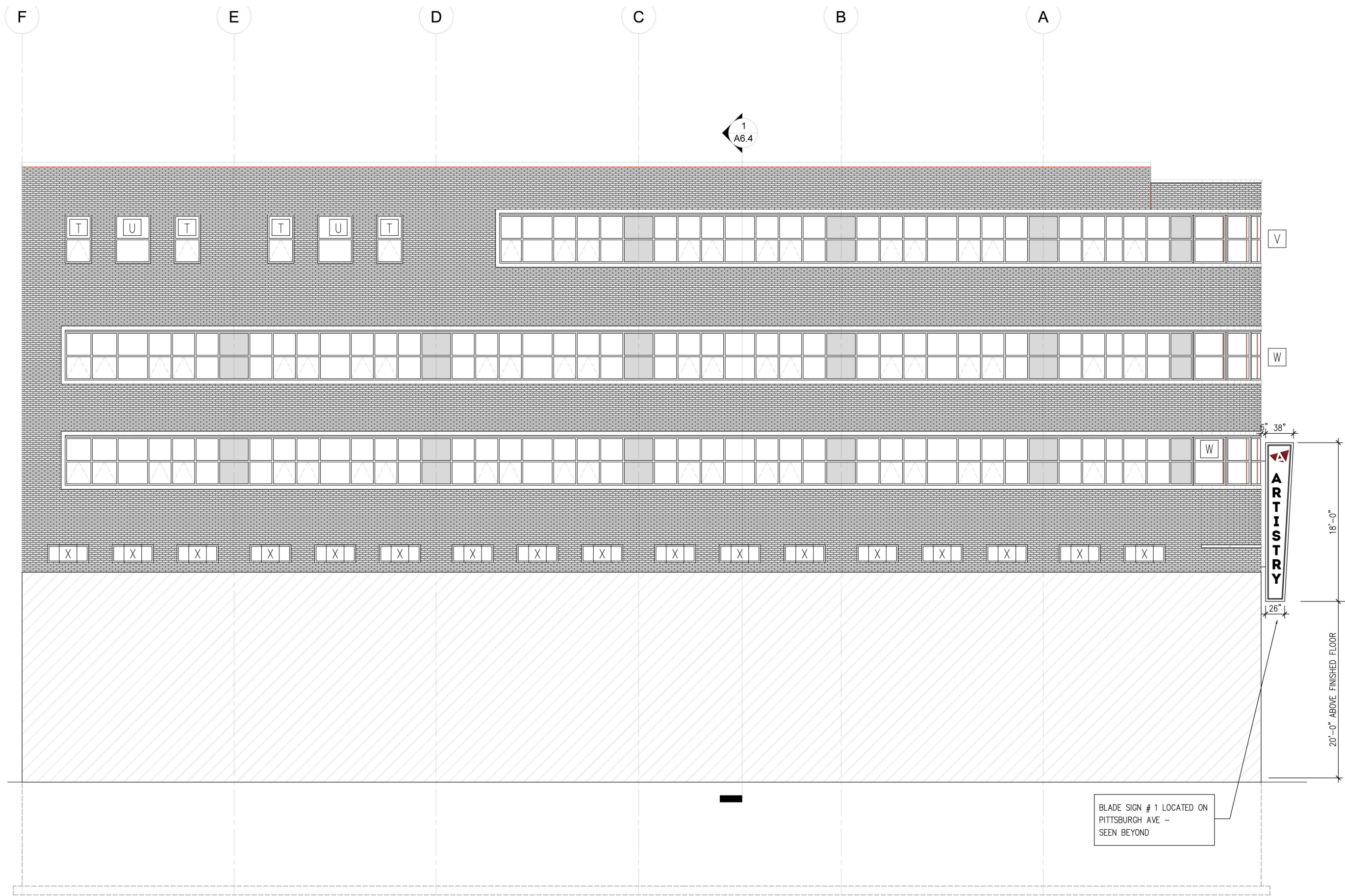


NORTH ELEVATION  
EXTERIOR SIGNAGE AND AWNINGS

7-19-2017

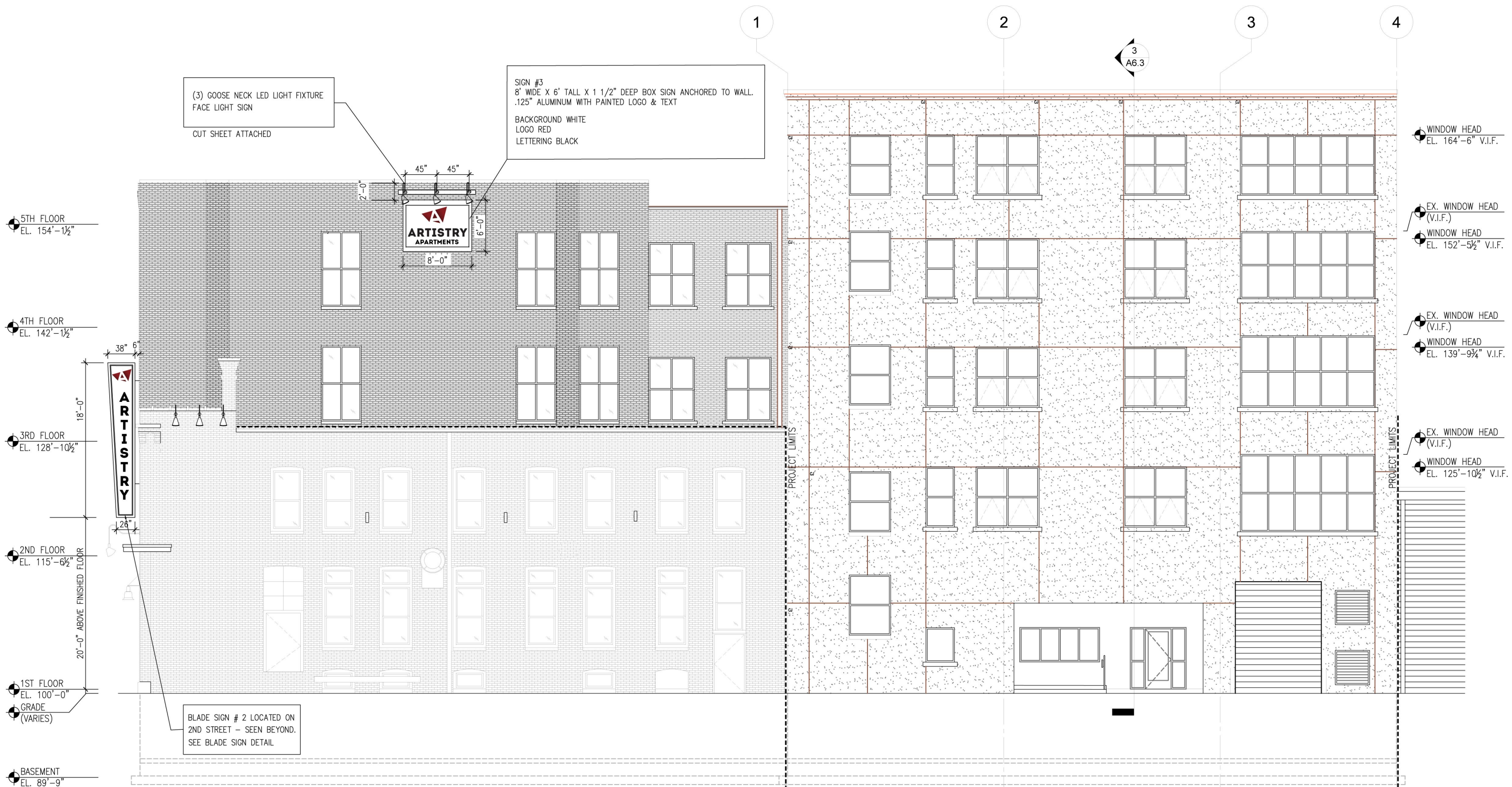




# EAST ELEVATION EXTERIOR SIGNAGE AND AWNINGS

7-19-2017





# SOUTH ELEVATION EXTERIOR SIGNAGE AND AWNINGS

7-19-2017





BLADE SIGN #1:  
44" W X 18' TALL X 6" DEEP MAX DIM.  
ALUM. BOX CABINET W/  
14" TRANSLUCENT PUSH THROUGH  
ACRYLIC LETTERS - LETTERS 1/2" PAST FACE PANEL.  
INTERNAL WHITE LED ILLUMINATION.  
SIGN PANEL - .125 ALUMINUM, DARK BRONZE TO  
MATCH STOREFRONT.  
SIGN ANCHORAGE TO BUILDING: PROVIDE  
6" WIDE X 5" DEEP X 12' LONG RACEWAY  
BOX, CENTERED ON SIGN BOX WITH  
TRANSFORMER IN RACEWAY WITH  
ACCESS PANEL.

BLADE SIGN # 1 LOCATED ON  
PITTSBURGH AVE.  
SEEN BEYOND.

CANOPY SIGNAGE WHITE  
PRINTED LETTERING ON BLACK  
CANOPY

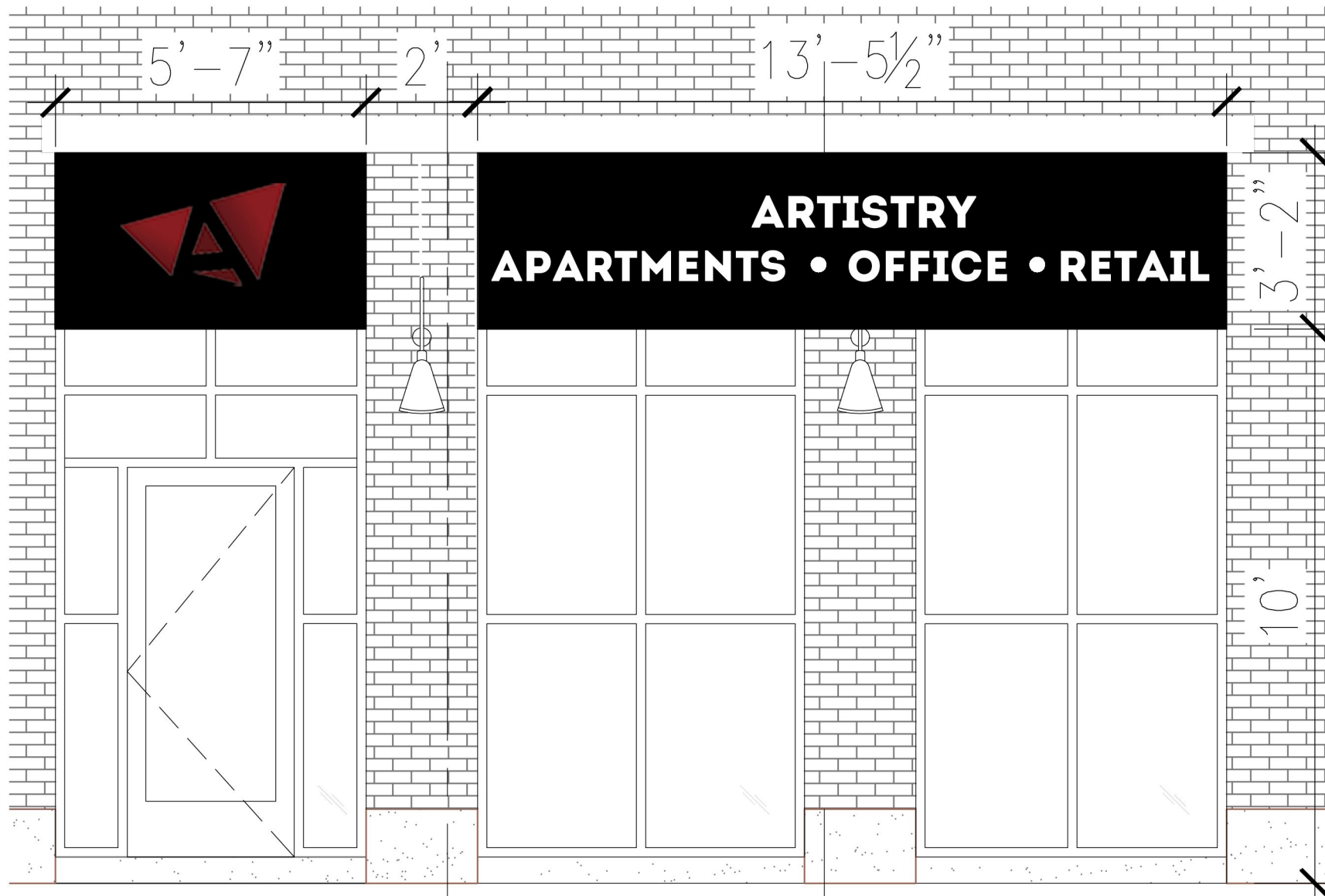
BLADE SIGN # 2 LOCATED ON  
2ND STREET

- NOTES:
- 1 BLACK FABRIC AWNING. SEE TYPICAL SECTION.
  - 2 BLACK FABRIC AWNING WITH 8" PRINTED  
WHITE LETTERING. SIGN 4
  - 3 LOGO ONLY. SIGN 5

WEST ELEVATION  
EXTERIOR SIGNAGE AND AWNINGS

7-19-2017

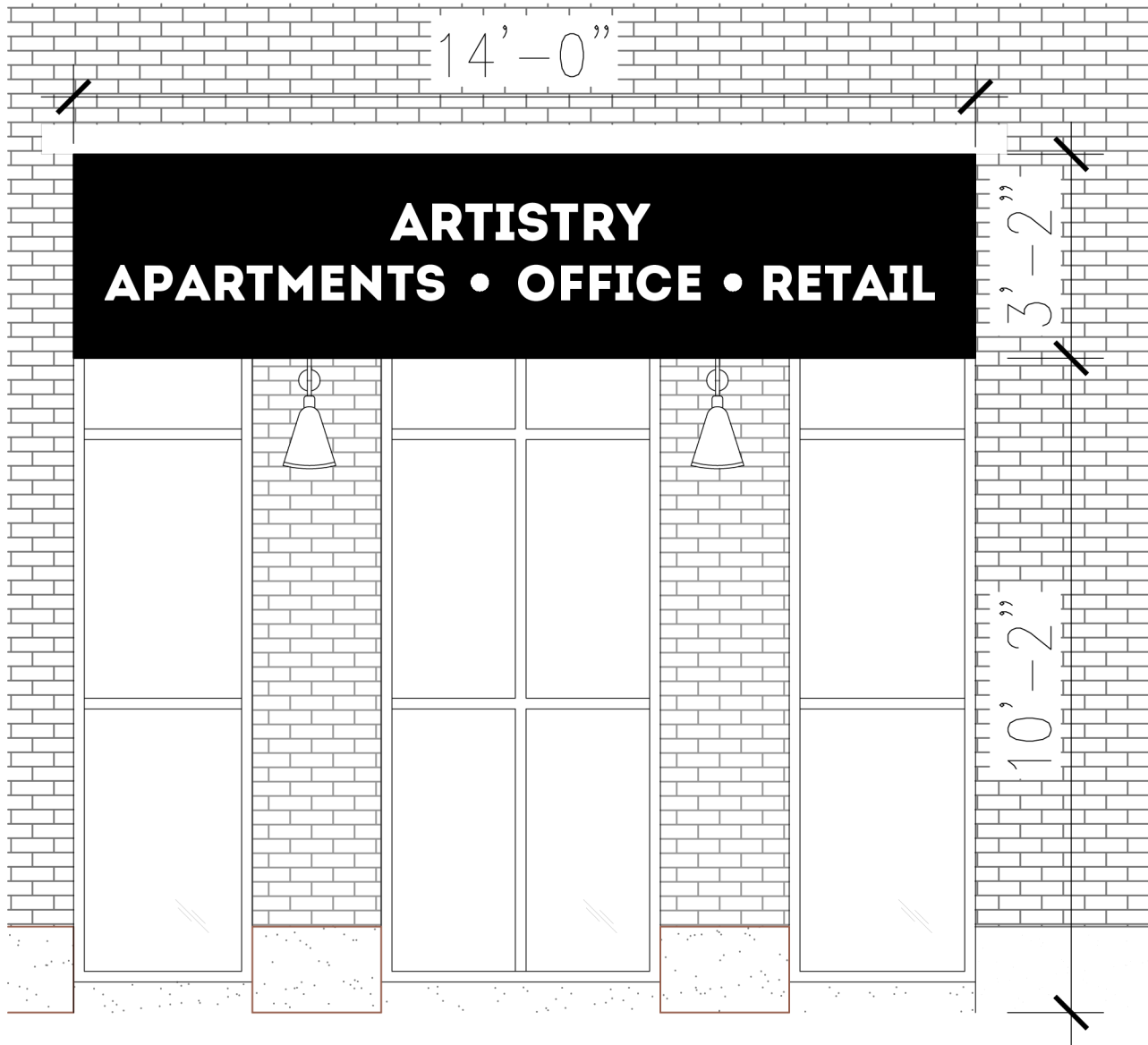




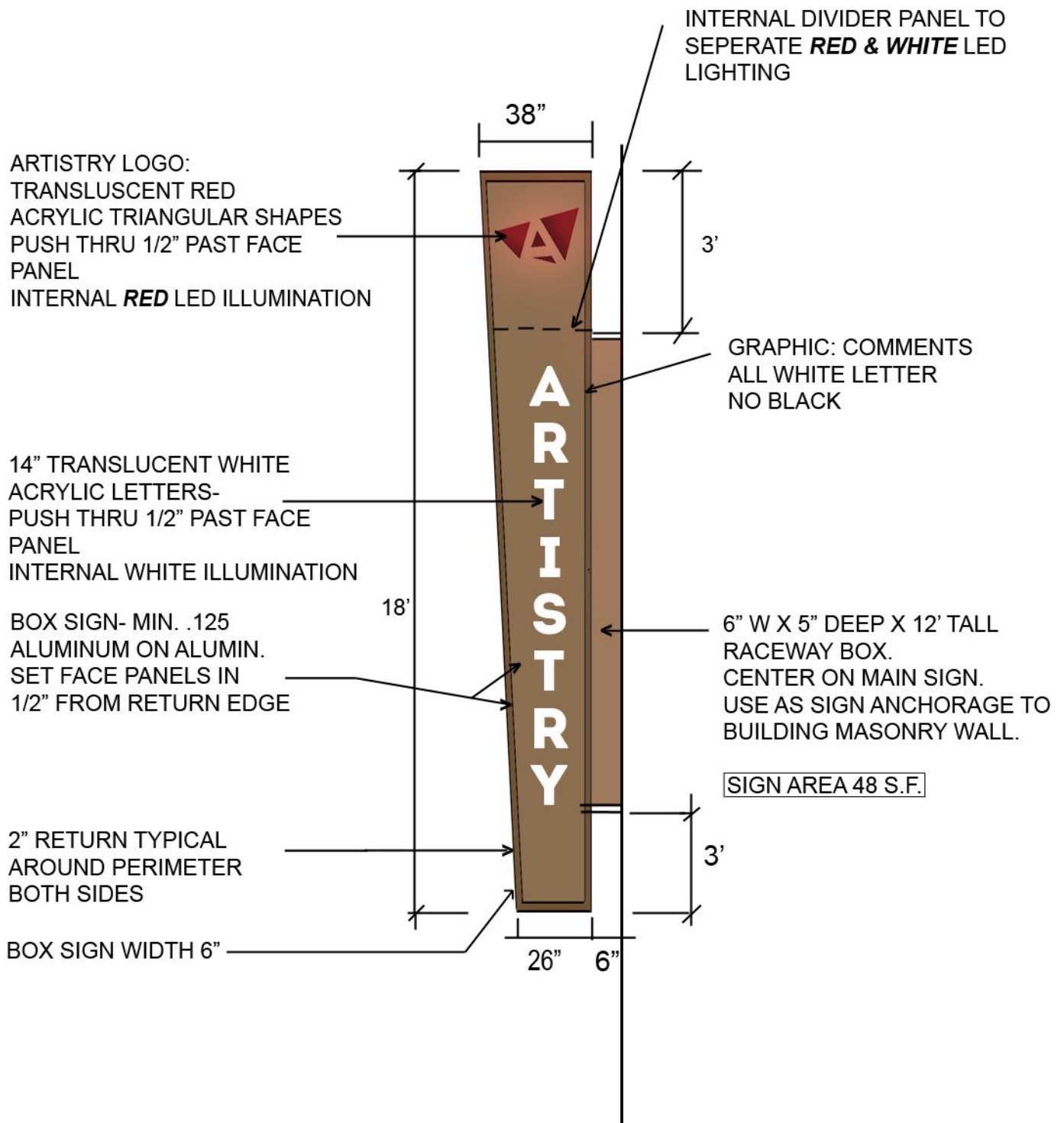










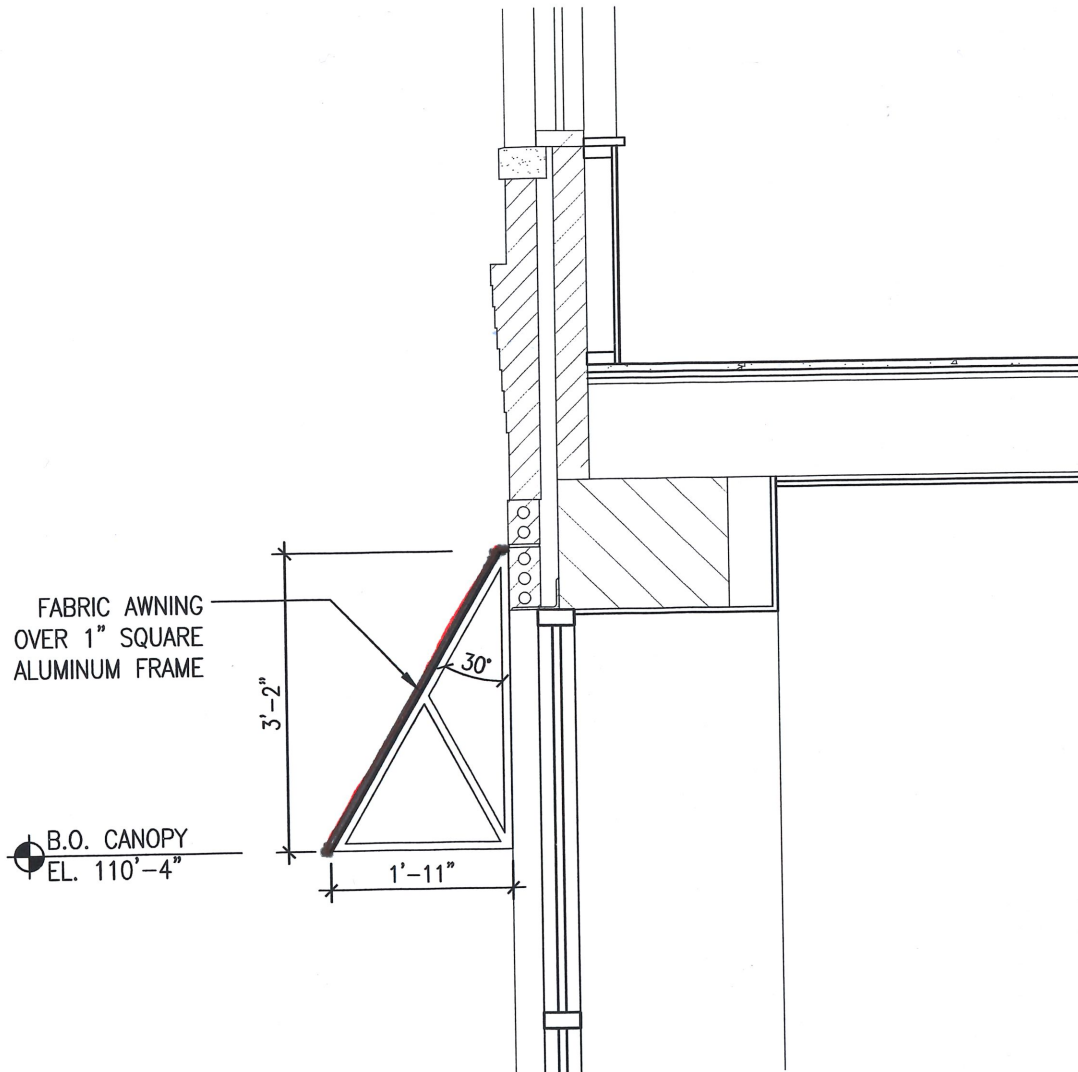


# BLADE SIGN 1 & 2 FOR ARTISTRY BLDG.

2 SIDED SIGN: SAME INFO FOR BOTH SIDES

7. 19. 2017





## 5 Fabric Canopy Section

1/2" = 1' - 0"



# WAREHOUSE SHADES

PREPARED BY: \_\_\_\_\_

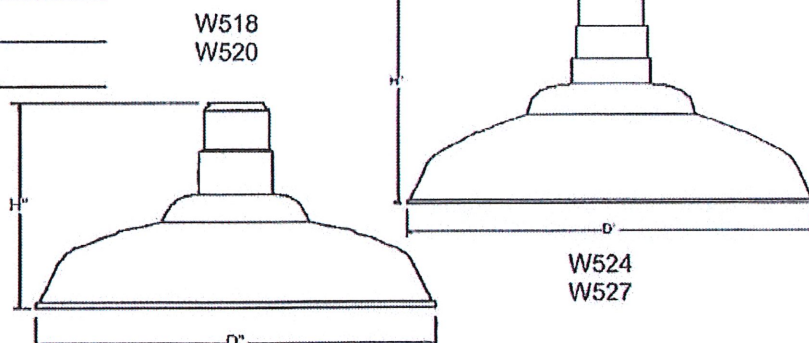
TYPE: \_\_\_\_\_

JOB NAME: \_\_\_\_\_

DATE: \_\_\_\_\_

CERTIFICATION: UL LISTED

MODEL#	D"	H"
W518	18	9
W520	20	10
W524	24	16
W527	27	16



**FINISH**-Five stage pretreatment process, coated with a lead free TGI C polyester powder coat finish. White is standard inside reflectors, Except #49-Galvanized, #62-Anodized Bronze and #63-Iron Rust, Unless specified. Custom colors and Marine are available upon request.

**MOUNTING**- 1/2" or 3/4" tapped hub is supplied. Top or side mount available. Fixtures are pre-wired with 48" or 96" leads. Available with cord or stem sets.

**REFLECTOR**- Spun from heavy gauge 1100-0 aluminum, ranging in thickness from .050 to .125. Galvanized is from 20 gauge sheets. Copper is spun from .040 gauge and 110 soft alloy.

**LAMP HOLDERS**- Accommodates **Incandescent** medium base porcelain socket, copper shell with nicked plate, rated 250V, 660W. **Compact Fluorescent** 4 pin heat resistant thermoplastic socket accommodates 26/32W (Gx24q-3 base) and 42W (Gx24q-4 base). Twist lock design provides for vibration and earthquake resistance, rated 75W, 600V. **High Intensity Discharge (H.I.D.)** medium base, 4KV pulse start socket, rated 660W/600V. **LED**. A minimum of 60,000 hours to 100,000 expected life depending on installation location and ambient temperature.

MODEL#	FINISH		LIGHT SOURCE				MOUNTING OPT.
			INC	CF <sup>1</sup>	HID <sup>1</sup>	LED <sup>1</sup>	
W518	40-copper w/ coat	52-patina	300W	26W, 32W, 42W	35W	57W	-Arm extension -Post Mts & Pole -Stem -Cord <sup>2</sup> -Cable & Chain -Hub
W520	41-black	53-rust		1X26W 1X32W 1X42W	50W	79W	
W524	42-dr. green	54-stucco			70W	93W	
W527	43-red	55-sage			100W	93W	
	44-white	57-polish alum w/ coat		2X26W 2X32W 2X42W			
	45-med. blue	58-satin alum. clear coat					
	46-yellow	59-coppertone					
	48-polish alum.	60-canal green					
	49-galvanized	61-anod. charcoal					
	50-navy blue	62-anod. bronze					
	51-arch. Bronze	63-iron rust					

<sup>1</sup>REMOTE BALLAST

<sup>2</sup>INC MAX WATTAGE 150W

CALL FACTORY FOR HIGHER WATTAGE

PHONE: 877-999-1990

FAX: 877-999-1955



12260 EAST END AVE. CHINO, CA 91710

MADE IN



U. S. A.





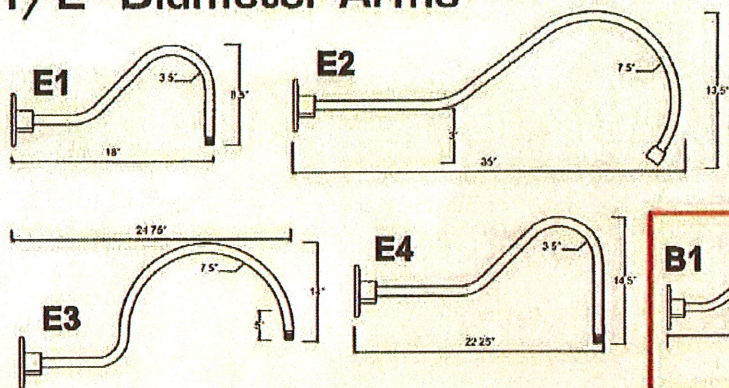
# Arm Extensions

TYPE WS

B1

ANOD. BRONZE Finish

## 1/2" Diameter Arms



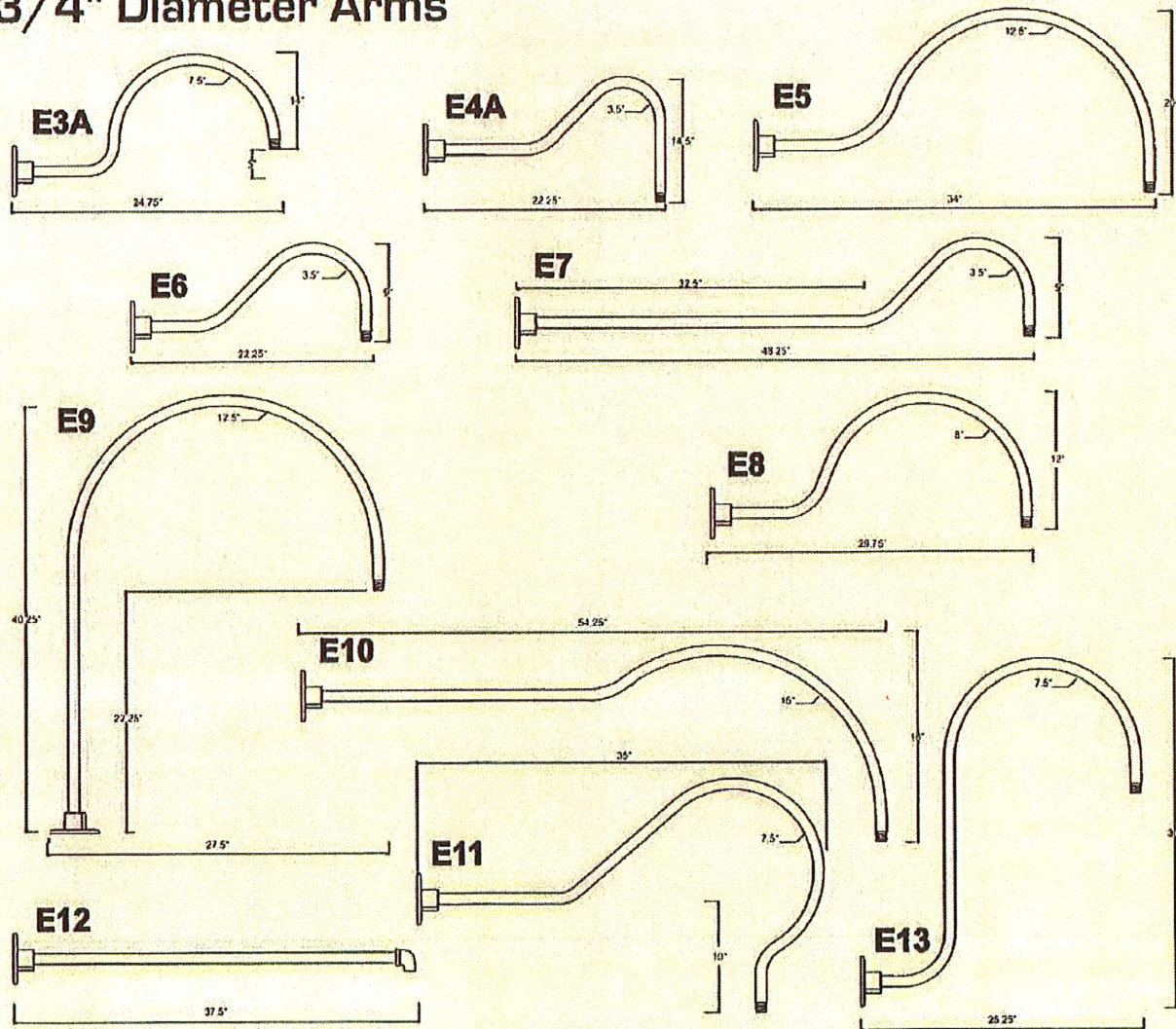
### E14 - Create Your Own



Baselite will take your sketch and fabricate a custom arm extension to meet your needs

All arms sold with Cast Backplate (CB)

## 3/4" Diameter Arms



Round Cast Backplates are standard with Arm Extensions that mount onto recessed 4" octagonal boxes.