

5TH FLOOR
EL. 154'-1½"

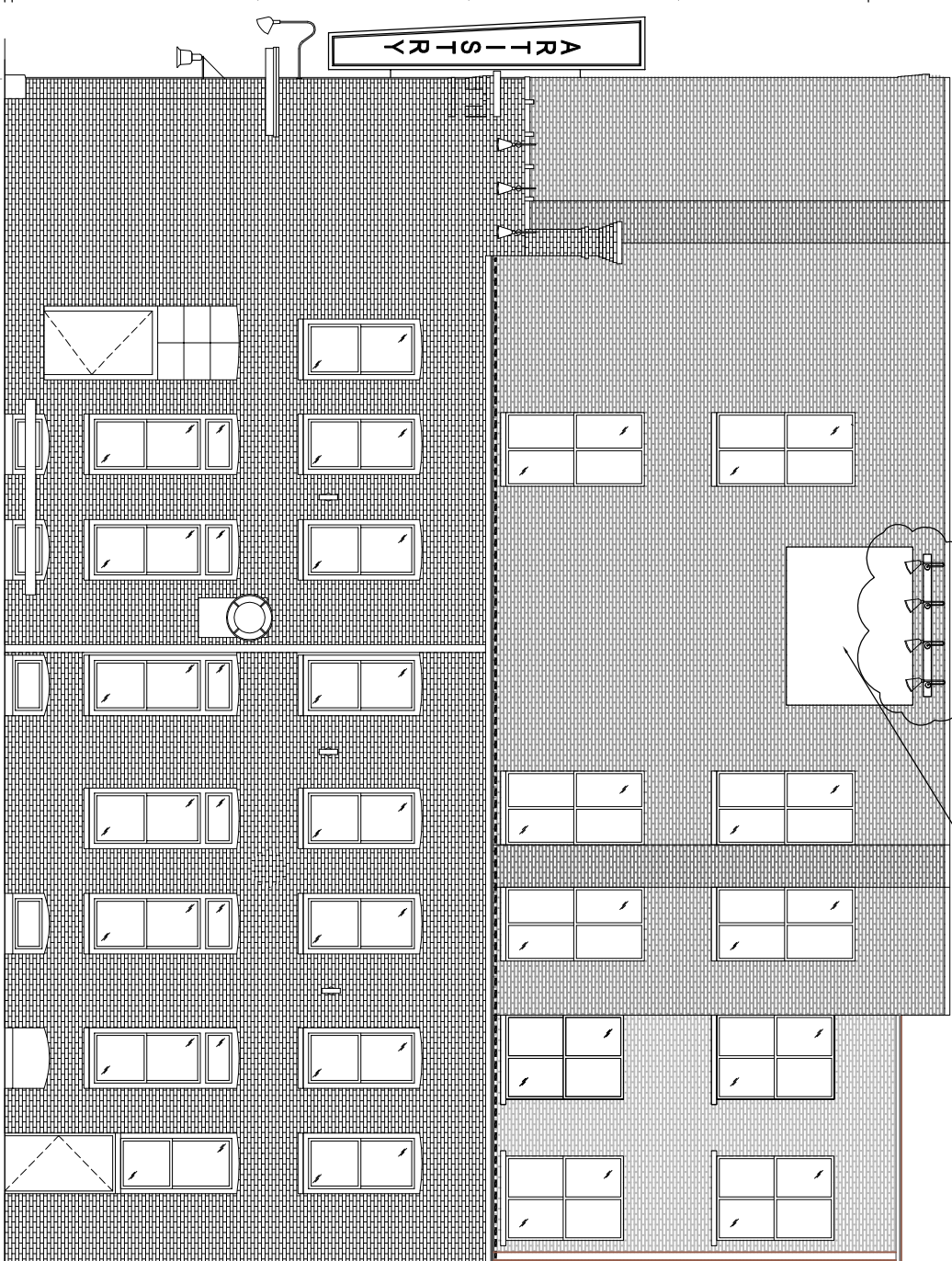
4TH FLOOR
EL. 142'-1½"

3RD FLOOR
EL. 128'-10½"

2ND FLOOR
EL. 115'-6½"

1ST FLOOR
EL. 100'-0"
(VARIES)

BASEMENT
EL. 89'-9"



5. ADDED GOOSE NECK SIGN LIGHTING AT PROPOSED SIGN LOCATION.

SOUTH ELEVATION

7-10-2017

Perimeter building modifications at level 1.



1. REMOVED CENTER COLUMN AND CREATED WIDER ENTRY ALCOVE AT SOUTH ENTRANCE
2. STAIR DOOR MOVED TO EAST FACE UNDER COVERED ALCOVE
3. ADDED PAINTED STEEL RAILING AT VERTICAL ELEVATION CHANGE OUT TO ALLEY
4. CHANGED DOOR LOCATION AND STOREFRONT IN RECESSED ALCOVE

WINDOW HEAD
EL. 164'-6" V.I.F.

EX. WINDOW HEAD
(V.I.F.)
WINDOW HEAD
EL. 152'-5½" V.I.F.

EX. WINDOW HEAD
(V.I.F.)
WINDOW HEAD
EL. 139'-9¾" V.I.F.

EX. WINDOW HEAD
(V.I.F.)
WINDOW HEAD
EL. 125'-10½" V.I.F.