



Certificate of Appropriateness

Milwaukee Historic Preservation Commission/200 E. Wells Street/Milwaukee, WI 53202/phone 414-286-5712/fax 414-286-3004

Property 2624 N. DOWNER AV. Downer Avenue Commercial HD
Description of work Install two signs as shown below with large sign on Downer façade and blade sign on Hackett facade. No anchors may be drilled into brick, drill into mortar joints only.
Date issued 7/14/2017 PTS ID 114315 COA: two signs

In accordance with the provisions of Section 320-21 (11) and (12) of the Milwaukee Code of Ordinances, the Milwaukee Historic Preservation Commission has issued a certificate of appropriateness for the work listed above. The work was found to be consistent with preservation guidelines. The following conditions apply to this certificate of appropriateness:

Anchors for signs may not be drilled into bricks. Drill attachment points into wood or mortar joints only.

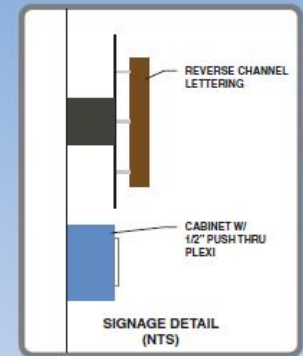
All work must be done in a craftsman-like manner, and must be completed within one year of the date this certificate was issued. Staff must approve any changes or additions to this certificate before work begins. Work that is not completed in accordance with this certificate may be subject to correction orders or citations. If you require technical assistance, please contact Tim Askin of the Historic Preservation staff as follows: Phone: (414) 286-5712 E-mail: HPC@milwaukee.gov.

If permits are required, you are responsible for obtaining them from the Milwaukee Development Center. If you have questions about permit requirements, please consult the Development Center's web site, www.milwaukee.gov/build, or call (414) 286-8210.

City of Milwaukee Historic Preservation Staff

Copies to: Development Center, Ald. Nik Kovac, Contractor

REVERSE CHANNEL LETTERING



ROBERT LAURENCE / REVERSE CHANNEL LETTERING

ONE (1) SET OF HALO ILLUMINATED, REVERSE CHANNEL LETTERING
"ROBERT LAURENCE & LOGO"

2" DEEP REVERSE CHANNEL LETTERING W/ MAP PAINTED FINISHES
ROUTED 1/8" ALUMINUM FACES W/ .063 ALUMINUM RETURNS
LETTERING STOOD OFF BACKER 1.5" W/ 1/4" STUDS

"BACKER"

ROUTED 1/8" ALUMINUM W/ MAP BRUSHED ALUMINUM FINISH
BACKER MOUNTED FLUSH TO 5"X5" ALUMINUM RACEWAY
RACEWAY MOUNTED FLUSH TO FASCIA

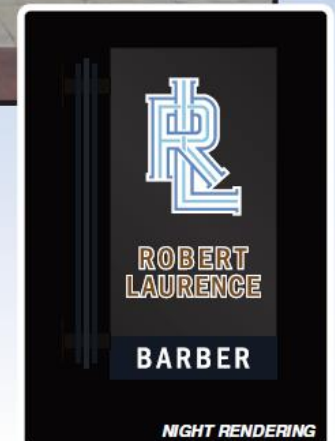
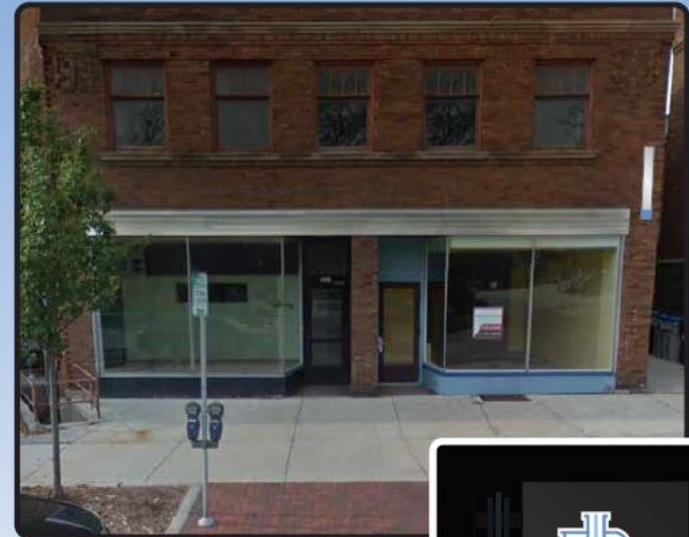
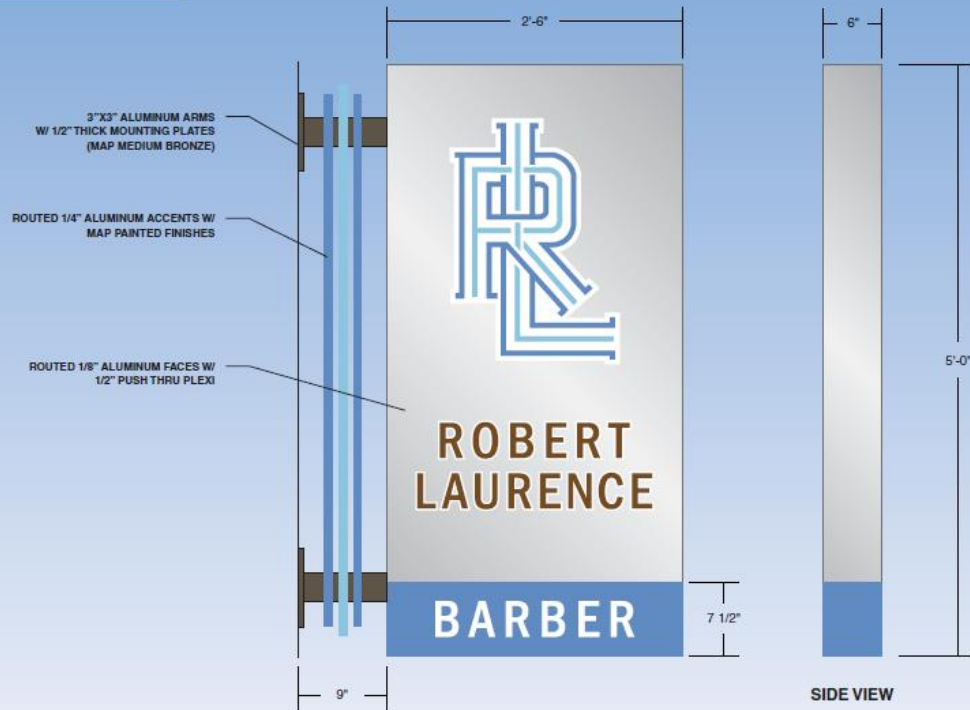
"ESTABLISHED 1994, SALON, SPA, BARBER"

5" DEEP ALUMINUM CABINETS W/ MAP PAINTED FINISH
ROUTED 1/8" ALUMINUM FACES W/ 1/2" CLEAR PUSH THRU PLEXI
CABINETS MOUNTED FLUSH TO FASCIA



Downer façade sign

BUILDING SIGN



ROBERT LAURENCE / BUILDING SIGN

ONE (1) DOUBLE SIDED, INTERNALLY ILLUMINATED BUILDING SIGN
 6" DEEP FABRICATED ALUMINUM SIGN CABINET W/ MAP PAINTED FINISHES
 ROUTED 1/8" ALUMINUM FACES W/ 1/2" PUSH THRU PLEXI
 SIGN INTERNALLY ILLUMINATED W/ WHITE LED ILLUMINATION

Hackett façade sign