



SIGN 2: PROJECTING SIGN

SCALE: 1" = 1'-0"

MANUFACTURE ONE (1) ILLUMINATED, DOUBLE SIDED PROJECTING SIGN



Neon Key

15mm Clear Red	Approx. L.F. = 44 (22 per side)
15mm Clear Gold	Approx. L.F. = 44 (22 per side)
10mm CL65 White	Approx. L.F. = 54 (27 per side)
15mm CL65 White	Approx. L.F. = 24 (12 per side)



Sales Representative: Andre Lucero

Designer: Dave Bumgarner

Date: 10/28/16

File Name: 9415 Pabst Sgn02v7

* Customer Approval x. _____

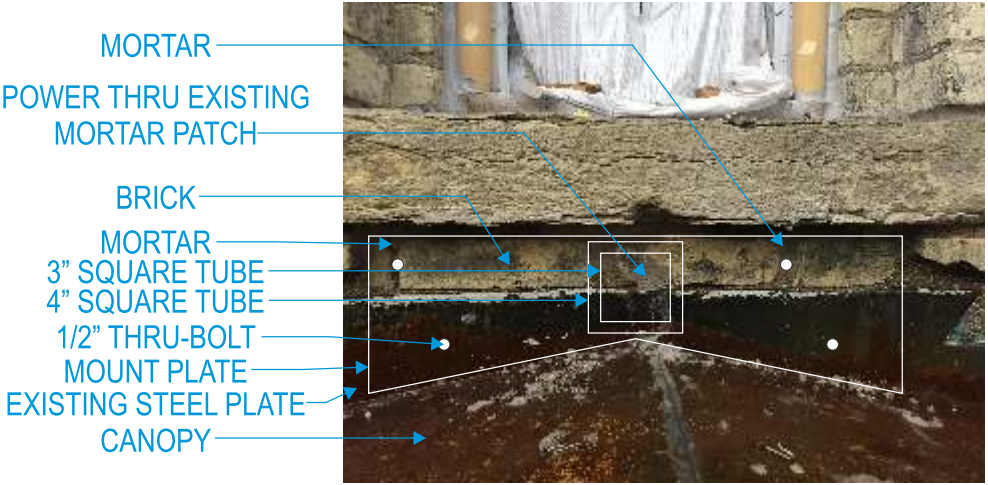
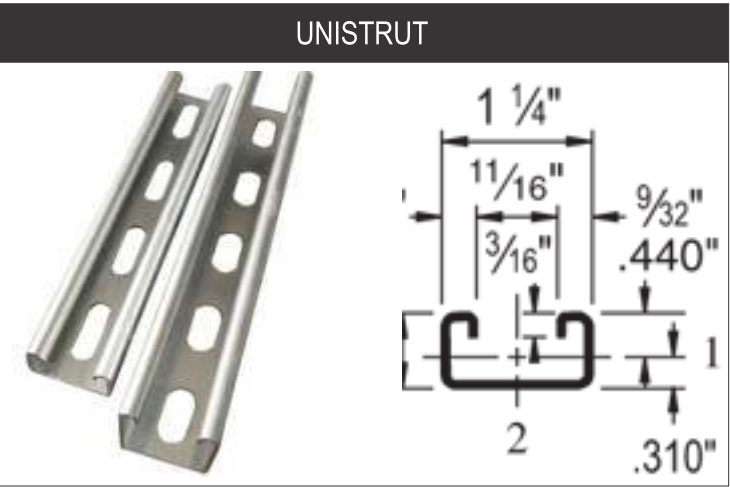
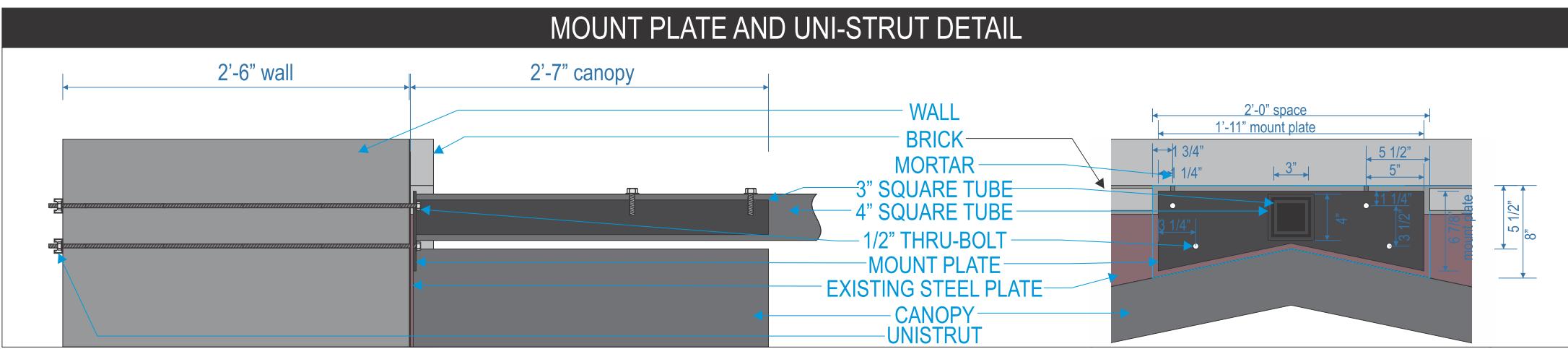
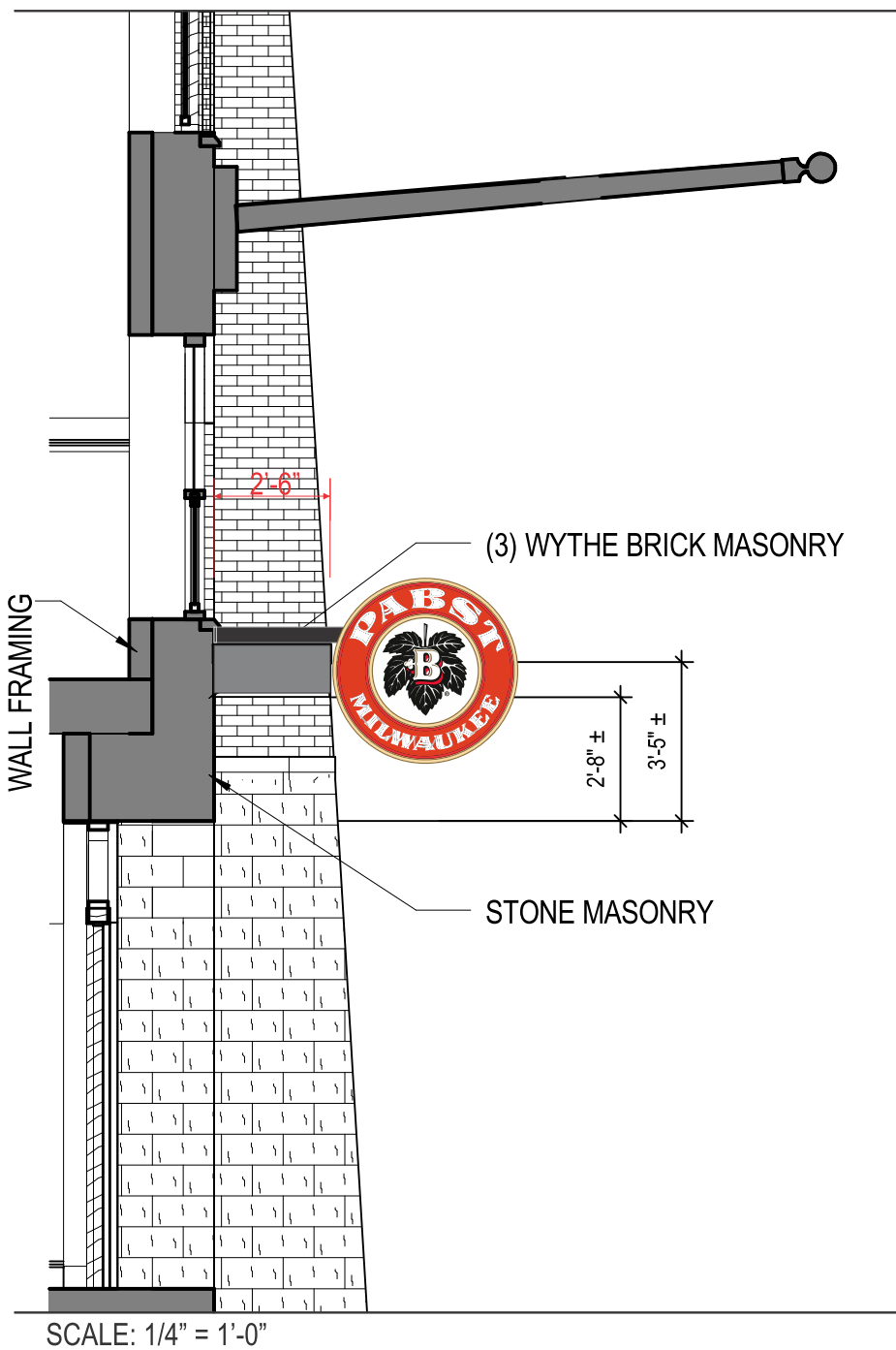
* Landlord Approval x. _____

*Signatures required to begin work

The design depicted herein is the sole property of Western Neon Inc., and may not be reproduced in whole or in part with out prior written consent. Actual color, letter sizes and graphic layout may vary slightly due to the properties of materials. Colors may vary depending on media substrate.

This sign is intended to be installed in accordance with the requirements of Article 600 og the National Electrical Code and/or other applicable local codes. This includes proper grounding and bonding of the sign





BACK OF WALL

