

Carlo Giombi

Marvin clad units

Quote #: 3F8RVFS

A Proposal for Window and Door Products prepared for:

Shipping Address:

LISBON STORM SCREEN & DOOR
5006 W LISBON AVE
MILWAUKEE, WI 53210-2853



ANDRE HAMMOND
LISBON STORM SCREEN & DOOR
5006 W LISBON AVE
MILWAUKEE, WI 53210
Phone: (414) 445-8899

Email: andre@lisbonstorm.com

This report was generated on 4/19/2017 8:41:24 AM using the Marvin Order Management System, version 0002.13.01 (Current). Price in USD. Unit availability and price are subject to change. Dealer terms and conditions may apply.

Featuring products from:



UNIT SUMMARY

The following is a schedule of the windows and doors for this project. For additional unit details, please see Line Item Quotes.

Additional charges, tax or Terms and Conditions may apply. Detail pricing is per unit.

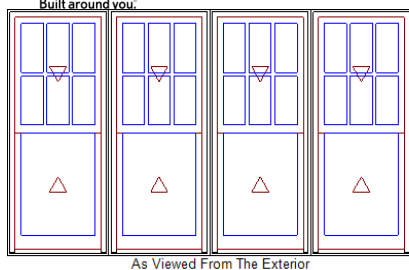
NUMBER OF LINES: 2		TOTAL UNIT QTY: 3		EXT NET PRICE: USD		10,825.86
LINE	MARK UNIT	BRAND	ITEM	NET PRICE	QTY	EXTENDED NET PRICE
3		Marvin	Clad Marvin Assembly RO 97" X 57 1/2" Entered as FS 96" X 57"	3,329.90	2	6,659.80
4		Marvin	Clad Marvin Assembly RO 121" X 57 1/2" Entered as FS 120" X 57"	4,166.06	1	4,166.06

quote only

LINE ITEM QUOTES

The following is a schedule of the windows and doors for this project. For additional unit details, please see Line Item Quotes. Additional charges, tax or Terms and Conditions may apply. Detail pricing is per unit.

Line #3	Mark Unit:	Net Price:	3,329.90
Qty: 2		Ext. Net Price:	USD 6,659.80



Entered As: FS
MO 96 1/2" X 57 1/4"
FS 96" X 57"
RO 97" X 57 1/2"
Egress Information A1, A2, A3, A4
Width: 20 13/32" Height: 23 7/16"
Net Clear Opening: 3.32 SqFt

Cashmere Clad Exterior
Stained Interior Finish Pine Interior
Honey Stained Interior Finish 592.28
4W1H - Rectangle Assembly
Assembly Frame Size
96" X 57"
Assembly Rough Opening
97" X 57 1/2"

Unit: A1 551.41
Clad Ultimate Double Hung - Next Generation 2.0
Basic Frame 24" X 57"
Rough Opening 25" X 57 1/2"
Top Sash
Cashmere Clad Sash Exterior
Stained Interior Finish Pine Sash Interior
Honey Stained Interior Finish
IG
Low E2 w/Argon
Stainless Perimeter and Spacer Bar
7/8" SDL - With Spacer Bar - Stainless 121.94
Rectangular - Special Cut 3W2H
Cashmere Clad Ext - Stained Interior Finish Pine Int
Honey Stained Interior Finish
Ogee Interior Glazing Profile
Bottom Sash
Cashmere Clad Sash Exterior
Stained Interior Finish Pine Sash Interior
Honey Stained Interior Finish
IG - 1 Lite
Low E2 w/Argon
Stainless Perimeter Bar
Ogee Interior Glazing Profile
Beige Interior Weatherstrip Package
Beige Exterior Weatherstrip Package
Satin Taupe Sash Lock
Satin Taupe Top Sash Strike Plate Assembly Color
Aluminum Screen
Charcoal Fiberglass Mesh
Cashmere Surround

Unit: A2 551.41
Clad Ultimate Double Hung - Next Generation 2.0
Basic Frame 24" X 57"
Rough Opening 25" X 57 1/2"
Top Sash
Cashmere Clad Sash Exterior
Stained Interior Finish Pine Sash Interior
Honey Stained Interior Finish
IG
Low E2 w/Argon
Stainless Perimeter and Spacer Bar
7/8" SDL - With Spacer Bar - Stainless 121.94
Rectangular - Special Cut 3W2H
Cashmere Clad Ext - Stained Interior Finish Pine Int
Honey Stained Interior Finish
Ogee Interior Glazing Profile
Bottom Sash
Cashmere Clad Sash Exterior
Stained Interior Finish Pine Sash Interior
Honey Stained Interior Finish
IG - 1 Lite
Low E2 w/Argon

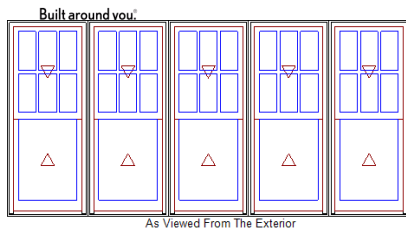
Stainless Perimeter Bar
Ogee Interior Glazing Profile
Beige Interior Weatherstrip Package
Beige Exterior Weatherstrip Package
Satin Taupe Sash Lock
Satin Taupe Top Sash Strike Plate Assembly Color
Aluminum Screen
Charcoal Fiberglass Mesh
Cashmere Surround

Unit: A3	551.41
Clad Ultimate Double Hung - Next Generation 2.0	
Basic Frame 24" X 57"	
Rough Opening 25" X 57 1/2"	
Top Sash	
Cashmere Clad Sash Exterior	
Stained Interior Finish Pine Sash Interior	
Honey Stained Interior Finish	
IG	
Low E2 w/Argon	
Stainless Perimeter and Spacer Bar	
7/8" SDL - With Spacer Bar - Stainless	121.94
Rectangular - Special Cut 3W2H	
Cashmere Clad Ext - Stained Interior Finish Pine Int	
Honey Stained Interior Finish	
Ogee Interior Glazing Profile	
Bottom Sash	
Cashmere Clad Sash Exterior	
Stained Interior Finish Pine Sash Interior	
Honey Stained Interior Finish	
IG - 1 Lite	
Low E2 w/Argon	
Stainless Perimeter Bar	
Ogee Interior Glazing Profile	
Beige Interior Weatherstrip Package	
Beige Exterior Weatherstrip Package	
Satin Taupe Sash Lock	
Satin Taupe Top Sash Strike Plate Assembly Color	
Aluminum Screen	
Charcoal Fiberglass Mesh	
Cashmere Surround	

Unit: A4	551.41
Clad Ultimate Double Hung - Next Generation 2.0	
Basic Frame 24" X 57"	
Rough Opening 25" X 57 1/2"	
Top Sash	
Cashmere Clad Sash Exterior	
Stained Interior Finish Pine Sash Interior	
Honey Stained Interior Finish	
IG	
Low E2 w/Argon	
Stainless Perimeter and Spacer Bar	
7/8" SDL - With Spacer Bar - Stainless	121.94
Rectangular - Special Cut 3W2H	
Cashmere Clad Ext - Stained Interior Finish Pine Int	
Honey Stained Interior Finish	
Ogee Interior Glazing Profile	
Bottom Sash	
Cashmere Clad Sash Exterior	
Stained Interior Finish Pine Sash Interior	
Honey Stained Interior Finish	
IG - 1 Lite	
Low E2 w/Argon	
Stainless Perimeter Bar	
Ogee Interior Glazing Profile	
Beige Interior Weatherstrip Package	
Beige Exterior Weatherstrip Package	
Satin Taupe Sash Lock	
Satin Taupe Top Sash Strike Plate Assembly Color	
Aluminum Screen	
Charcoal Fiberglass Mesh	
Cashmere Surround	

Factory Mull Charge 44.22
4 9/16" Jamb
Nailing Fin
***Note: This configuration is certified to AAMA 450. Mull certification ratings may vary from individual unit certification ratings.

Line #4	Mark Unit:	Net Price:		4,166.06
Qty: 1		Ext. Net Price:	USD	4,166.06



Entered As: FS
MO 120 1/2" X 57 1/4"
FS 120" X 57"
RO 121" X 57 1/2"

Egress Information A1, A2, A3, A4, A5
Width: 20 13/32" Height: 23 7/16"
Net Clear Opening: 3.32 SqFt

Cashmere Clad Exterior
Stained Interior Finish Pine Interior
Honey Stained Interior Finish 740.35
5W1H - Rectangle Assembly
Assembly Frame Size
120" X 57"
Assembly Rough Opening
121" X 57 1/2"
Unit: A1 551.41
Clad Ultimate Double Hung - Next Generation 2.0
Basic Frame 24" X 57"
Rough Opening 25" X 57 1/2"
Top Sash
Cashmere Clad Sash Exterior
Stained Interior Finish Pine Sash Interior
Honey Stained Interior Finish
IG
Low E2 w/Argon
Stainless Perimeter and Spacer Bar
7/8" SDL - With Spacer Bar - Stainless 121.94
Rectangular - Special Cut 3W2H
Cashmere Clad Ext - Stained Interior Finish Pine Int
Honey Stained Interior Finish
Ogee Interior Glazing Profile
Bottom Sash
Cashmere Clad Sash Exterior
Stained Interior Finish Pine Sash Interior
Honey Stained Interior Finish
IG - 1 Lite
Low E2 w/Argon
Stainless Perimeter Bar
Ogee Interior Glazing Profile
Beige Interior Weatherstrip Package
Beige Exterior Weatherstrip Package
Satin Taupe Sash Lock
Satin Taupe Top Sash Strike Plate Assembly Color
Aluminum Screen
Charcoal Fiberglass Mesh
Cashmere Surround

Unit: A2 551.41
Clad Ultimate Double Hung - Next Generation 2.0
Basic Frame 24" X 57"
Rough Opening 25" X 57 1/2"
Top Sash
Cashmere Clad Sash Exterior
Stained Interior Finish Pine Sash Interior
Honey Stained Interior Finish
IG
Low E2 w/Argon
Stainless Perimeter and Spacer Bar
7/8" SDL - With Spacer Bar - Stainless 121.94
Rectangular - Special Cut 3W2H
Cashmere Clad Ext - Stained Interior Finish Pine Int
Honey Stained Interior Finish
Ogee Interior Glazing Profile
Bottom Sash
Cashmere Clad Sash Exterior
Stained Interior Finish Pine Sash Interior
Honey Stained Interior Finish
IG - 1 Lite
Low E2 w/Argon

Stainless Perimeter Bar
Ogee Interior Glazing Profile
Beige Interior Weatherstrip Package
Beige Exterior Weatherstrip Package
Satin Taupe Sash Lock
Satin Taupe Top Sash Strike Plate Assembly Color
Aluminum Screen
Charcoal Fiberglass Mesh
Cashmere Surround

Unit: A3 551.41

Clad Ultimate Double Hung - Next Generation 2.0

Basic Frame 24" X 57"

Rough Opening 25" X 57 1/2"

Top Sash

Cashmere Clad Sash Exterior

Stained Interior Finish Pine Sash Interior

Honey Stained Interior Finish

IG

Low E2 w/Argon

Stainless Perimeter and Spacer Bar

7/8" SDL - With Spacer Bar - Stainless 121.94

Rectangular - Special Cut 3W2H

Cashmere Clad Ext - Stained Interior Finish Pine Int

Honey Stained Interior Finish

Ogee Interior Glazing Profile

Bottom Sash

Cashmere Clad Sash Exterior

Stained Interior Finish Pine Sash Interior

Honey Stained Interior Finish

IG - 1 Lite

Low E2 w/Argon

Stainless Perimeter Bar

Ogee Interior Glazing Profile

Beige Interior Weatherstrip Package

Beige Exterior Weatherstrip Package

Satin Taupe Sash Lock

Satin Taupe Top Sash Strike Plate Assembly Color

Aluminum Screen

Charcoal Fiberglass Mesh

Cashmere Surround

Unit: A4 551.41

Clad Ultimate Double Hung - Next Generation 2.0

Basic Frame 24" X 57"

Rough Opening 25" X 57 1/2"

Top Sash

Cashmere Clad Sash Exterior

Stained Interior Finish Pine Sash Interior

Honey Stained Interior Finish

IG

Low E2 w/Argon

Stainless Perimeter and Spacer Bar

7/8" SDL - With Spacer Bar - Stainless 121.94

Rectangular - Special Cut 3W2H

Cashmere Clad Ext - Stained Interior Finish Pine Int

Honey Stained Interior Finish

Ogee Interior Glazing Profile

Bottom Sash

Cashmere Clad Sash Exterior

Stained Interior Finish Pine Sash Interior

Honey Stained Interior Finish

IG - 1 Lite

Low E2 w/Argon

Stainless Perimeter Bar

Ogee Interior Glazing Profile

Beige Interior Weatherstrip Package

Beige Exterior Weatherstrip Package

Satin Taupe Sash Lock

Satin Taupe Top Sash Strike Plate Assembly Color

Aluminum Screen

Charcoal Fiberglass Mesh

Cashmere Surround

Unit: A5	551.41
Clad Ultimate Double Hung - Next Generation 2.0	
Basic Frame 24" X 57"	
Rough Opening 25" X 57 1/2"	
Top Sash	
Cashmere Clad Sash Exterior	
Stained Interior Finish Pine Sash Interior	
Honey Stained Interior Finish	
IG	
Low E2 w/Argon	
Stainless Perimeter and Spacer Bar	
7/8" SDL - With Spacer Bar - Stainless	121.94
Rectangular - Special Cut 3W2H	
Cashmere Clad Ext - Stained Interior Finish Pine Int	
Honey Stained Interior Finish	
Ogee Interior Glazing Profile	
Bottom Sash	
Cashmere Clad Sash Exterior	
Stained Interior Finish Pine Sash Interior	
Honey Stained Interior Finish	
IG - 1 Lite	
Low E2 w/Argon	
Stainless Perimeter Bar	
Ogee Interior Glazing Profile	
Beige Interior Weatherstrip Package	
Beige Exterior Weatherstrip Package	
Satin Taupe Sash Lock	
Satin Taupe Top Sash Strike Plate Assembly Color	
Aluminum Screen	
Charcoal Fiberglass Mesh	
Cashmere Surround	
Factory Mull Charge	58.96
4 9/16" Jambs	
Nailing Fin	
***Note: This configuration is certified to AAMA 450. Mull certification ratings may vary from individual unit certification ratings.	

Project Subtotal Net Price: USD	10,825.86
5.600% Sales Tax: USD	606.25
Project Total Net Price: USD	11,432.11

Product and Performance Information

NFRC energy ratings and values may vary depending on the exact configuration of glass thickness used on the unit. This data may change over time due to ongoing product changes or updated test results or requirements.

The National Fenestration Rating Council (NFRC) has developed and operates a uniform national rating system for the energy performance of fenestration products, including windows and doors. For additional information regarding this rating system, see www.nfrc.org/WindowRatings.

Review the map below to determine if your units meet ENERGY STAR for your location.

