

2691 N. Lake Drive: Roof and Porch Repair, Appropriate Application 2017

Supporting Documentation: Annotated Photographs

2691 N. Lake: All Sides of Building

West, North, East and South Faces



West Face



North Face



East Face



South Face

2691 N. Lake Drive: Flat Roof

Flat Roof, North Side: Black areas indicate patches for former leaks.



Facing East



Facing West



Facing West

2691 N. Lake Drive: Flat Roof

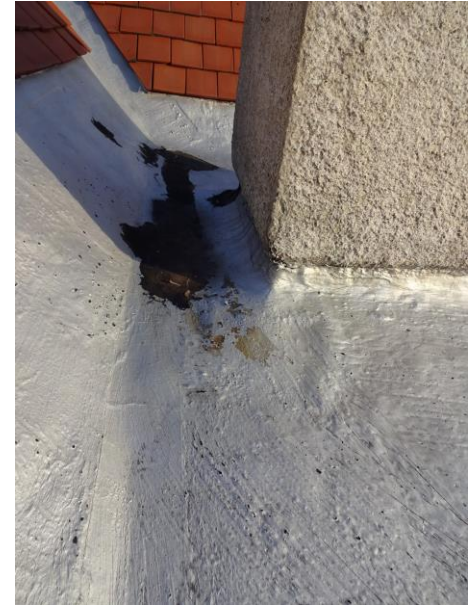
Flat Roof: South Side: Black areas indicate patches for former leaks.



Facing South East



Facing South East



Chimney Seam

2691 N. Lake Drive

Porch Views



Full porch view

South Face view:

View of replacement



Only a portion of the the brick

facing and concrete borders

were replaced In 2007 by



2691 N. Lake Drive

Porch Views



Close up of seam between
old and new concrete
crumbling mortar



Close ups of old and new brick facing, failing patched concrete,
and



2691 N. Lake Drive

Porch Views



Close up of east face of south porch column,
porch

Brick facing and crumbling mortar
crumbling mortar



Close up of south face of south
column, brick, and