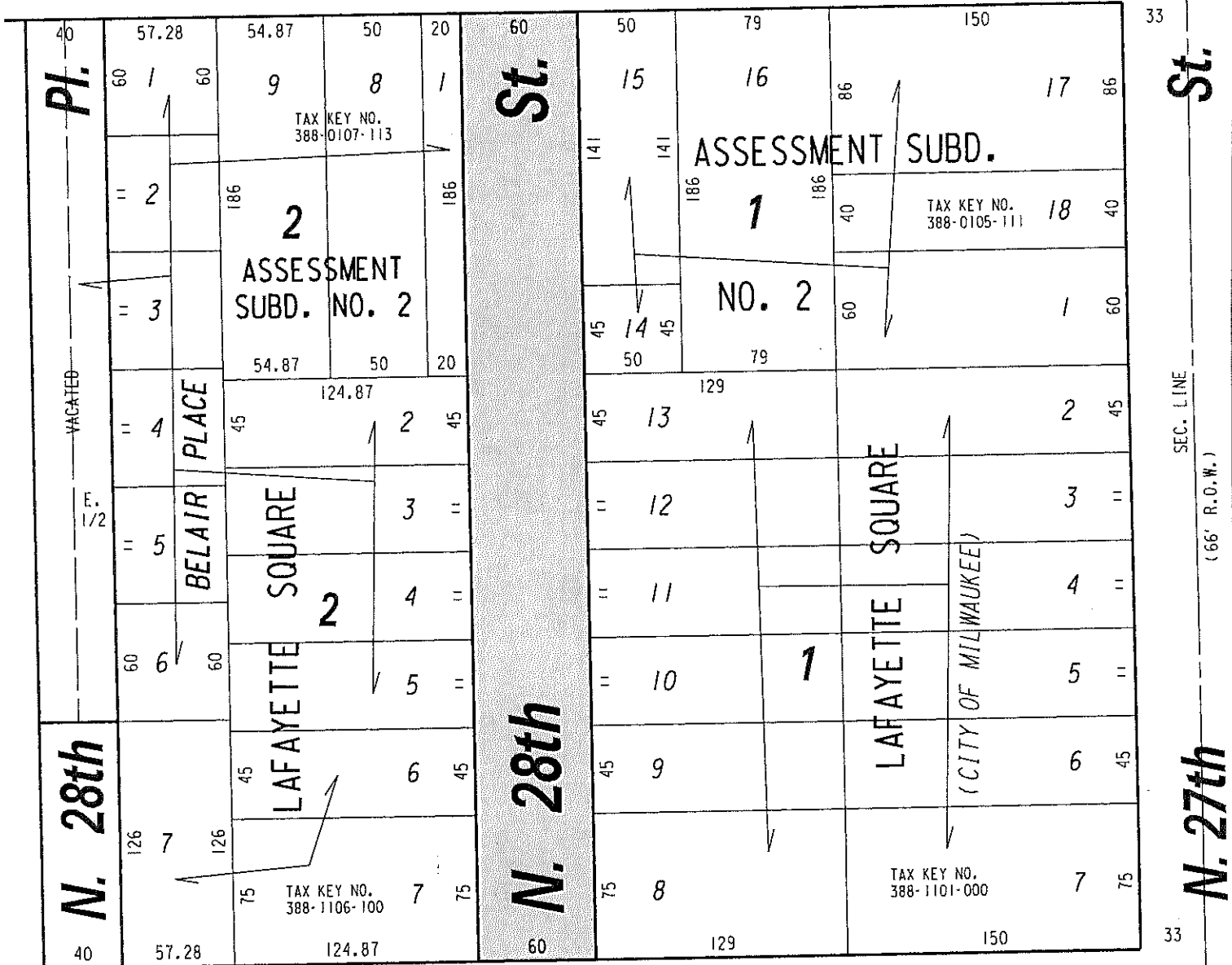


W. Wells

(70' R.O.W.)

St.



W. Wisconsin

1/4 SEC. LINE

Ave.

(100' R.O.W.)



PUBLIC STREET  
PROPOSED TO  
BE VACATED

EXHIBIT "A"  
FILE NO. 160472

INFRASTRUCTURE SERVICES DIVISION  
MILWAUKEE, WISCONSIN

ASSIGNED TO: W. FUCHS

CH'K'D. BY: W. FUCHS

DRAWN BY: W.F.

DATE: SEPT. 28, 2016

PROJECT/GRANT NO.: WK52337387

SCALE: 1" = 80'

APPROVED BY:

*John W. Fuchs*

*[Signature]*

CENTRAL DRAFTING & RECORDS MANAGER

CITY ENGINEER