



# Certificate of Appropriateness

Milwaukee Historic Preservation Commission/200 E. Wells Street/Milwaukee, WI 53202/phone 414-286-5712/fax 414-286-3004

**Property** 2415 E. WYOMING PL. North Point South Historic District  
**Description of work** Remove two ginkgo trees, remove one other tree as shown on aerial view, prune one large tree, and remove shrubs and small trees as needed in back yard.  
**Date issued** 4/17/2017 PTS ID 114257 COA: rear yard landscaping & tree removal

In accordance with the provisions of Section 320-21 (11) and (12) of the Milwaukee Code of Ordinances, the Milwaukee Historic Preservation Commission has issued a certificate of appropriateness for the work listed above. The work was found to be consistent with preservation guidelines. The following conditions apply to this certificate of appropriateness:

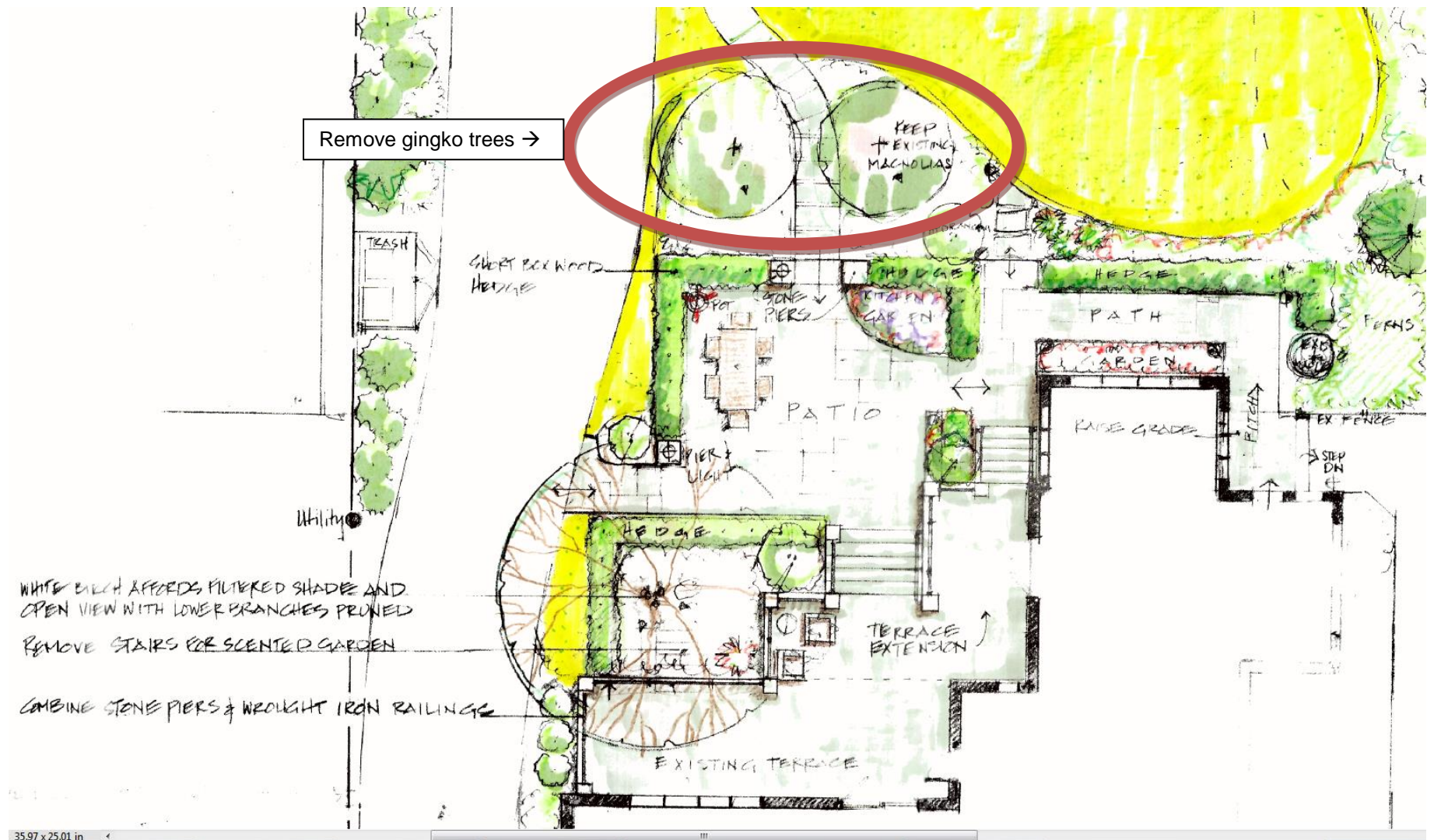
See below for images of trees to be removed. Pruning and shrub removal are granted as needed within the backyard.

All work must be done in a craftsman-like manner, and must be completed within one year of the date this certificate was issued. Staff must approve any changes or additions to this certificate before work begins. Work that is not completed in accordance with this certificate may be subject to correction orders or citations. If you require technical assistance, please contact Tim Askin of the Historic Preservation staff as follows: Phone: (414) 286-5712 E-mail: HPC@milwaukee.gov.

If permits are required, you are responsible for obtaining them from the Milwaukee Development Center. If you have questions about permit requirements, please consult the Development Center's web site, [city.milwaukee.gov/permits](http://city.milwaukee.gov/permits), or call (414) 286-8210.

City of Milwaukee Historic Preservation Staff

Copies to: Development Center, Ald. Nik Kovac, Contractor, Inspector Paul Wolfgramm (286-2590)



Rear yard future proposed landscape plan. This plan is for reference only. Handwritten notations in this plan are not approved.





Remove gingko trees in this photograph





Remove circled tree.





Remove tree at center of photograph .