

File: I:\Wangard Partners\15867- Freshwater Plaza Water Feature\060 CAD\IC - Civil\500 Production - Civil Plans\503-Site Dimension\Plan\15867 - Site Plan and Details.dwg

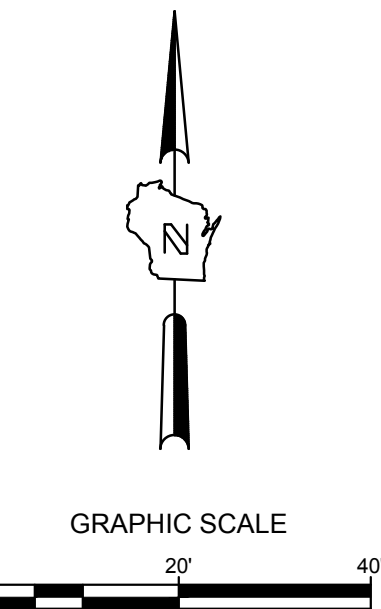
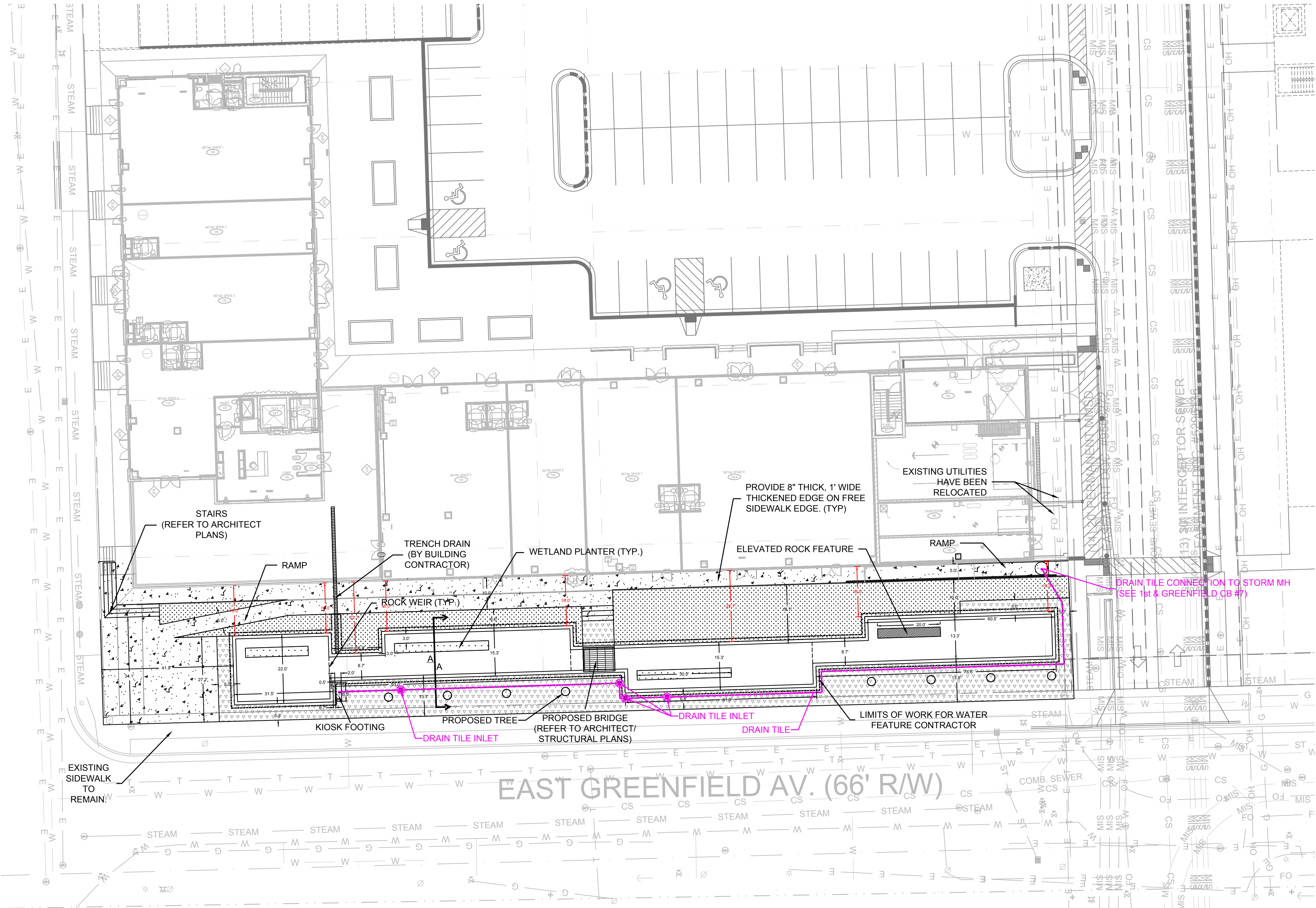


The images above are shown as an example of corten steel planter boxes that were used in a similar water feature context.



CALL DIGGERS HOTLINE
1-800-242-8511
TOLL FREE
WS STATUTE (96.076/97.074)
REQUIRES MIN. 3 WORK DAYS
NOTICE BEFORE YOU LOCATE
MILW. AREA 259-1181

THE UNDERGROUND UTILITY INFORMATION SHOWN ON THIS MAP IS BASED ON FIELD MARKINGS AND INFORMATION FURNISHED BY UTILITY COMPANIES AND THE LOCAL MUNICIPALITY. WHILE THIS INFORMATION IS BELIEVED TO BE RELIABLE, ITS ACCURACY AND COMPLETENESS CANNOT BE GUARANTEED.



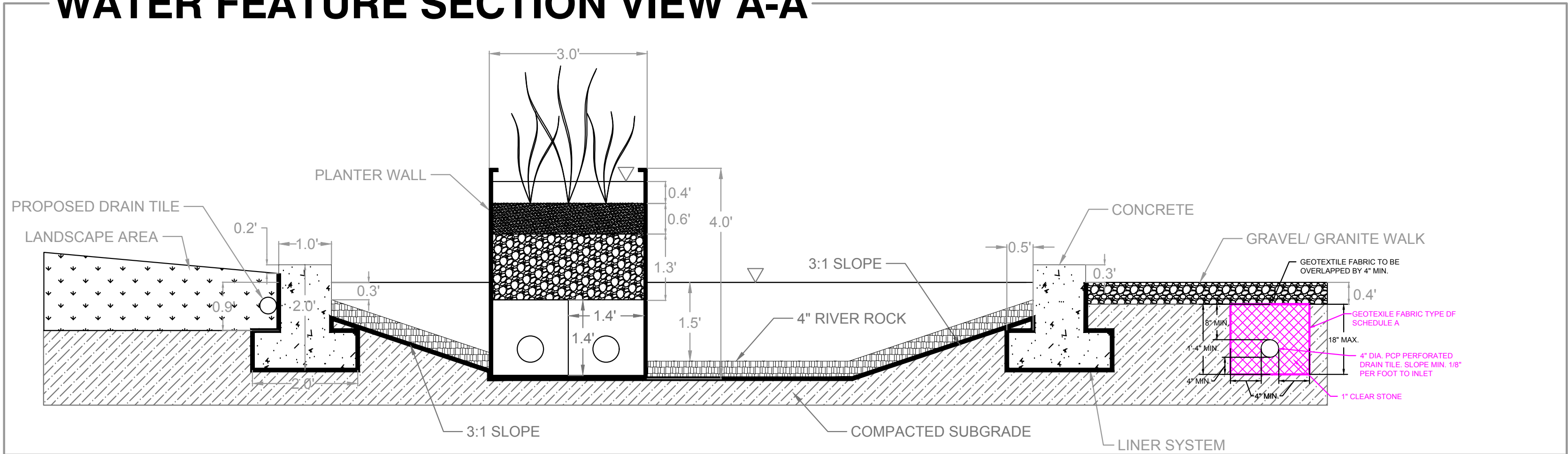
LEGEND:

- 5" THICK CONCRETE WALK
- OVERLAND PLANTER
- BRIDGE
- LANDSCAPE AREA (REFER TO ARCHITECT PLANS)
- GRAVEL/ GRANITE
- TREE
- DRAIN TILE
- DRAIN TILE INLET

GENERAL NOTES:

1. THE UNDERGROUND UTILITY INFORMATION SHOWN ON THIS DRAWING IS BASED ON FIELD LOCATIONS AND/OR RECORDS FURNISHED BY MUNICIPALITIES AND UTILITY COMPANIES. THE LOCATION AND ACCURACY OF WHICH CANNOT BE GUARANTEED. THERE MAY BE ADDITIONAL UNDERGROUND UTILITY INSTALLATIONS WITHIN THE PROJECT AREA THAT ARE NOT SHOWN.
2. VERIFY ACTUAL LOCATIONS AND INVERTS IN THE FIELD. ANY POTENTIAL ERRORS, OMISSIONS, OR DISCREPANCIES SHALL BE BROUGHT TO THE ATTENTION OF THE ENGINEER PRIOR TO PROCEEDING WITH CONSTRUCTION.
3. WORK TO BE COMPLETED IS INDICATED IN BOLD TYPE LINES AND EXISTING CONDITIONS ARE INDICATED BY LIGHT TYPE LINES.
4. ELECTRONIC CIVIL FILES ARE AVAILABLE UPON WRITTEN REQUEST. DO NOT USE ELECTRONIC CIVIL FILES TO LAYOUT FOUNDATIONS, COLUMN LINES, LIGHT POLES, OR OTHER NON CIVIL SITE WORK. REFER TO ARCHITECTURAL DRAWINGS FOR DIMENSIONS OF BUILDING AND ARCHITECTURAL FEATURES.
5. DIMENSIONS ARE FROM FACE OF CURB OR EDGE OF PAVEMENT.
6. WORK WITHIN THE PUBLIC RIGHT OF WAY, INCLUDING BUT NOT LIMITED TO DRIVEWAY OPENINGS, SIDEWALK AND RAMPS, PAVING, AND CURB AND GUTTER SHALL BE COMPLETED PER MUNICIPAL AND/OR COUNTY REQUIREMENTS AND STANDARDS.

WATER FEATURE SECTION VIEW A-A



FRESHWATER WATER FEATURE
1ST AND GREENFIELD
MILWAUKEE, WISCONSIN

SITE PLAN

CB #3 10-25-2016
CB #2 9-22-2016
ISSUED FOR CONSTRUCTION 8-31-2016
NO. REVISION DATE BY

DRAWING NO. 15867 - Site Plan and Details.dwg

DRAWN BY: JWK

DATE: 9-22-2016

PROJECT NO: 15867

CHECKED BY: CTC

APPROVED BY:

SHEET NO.:

C 100

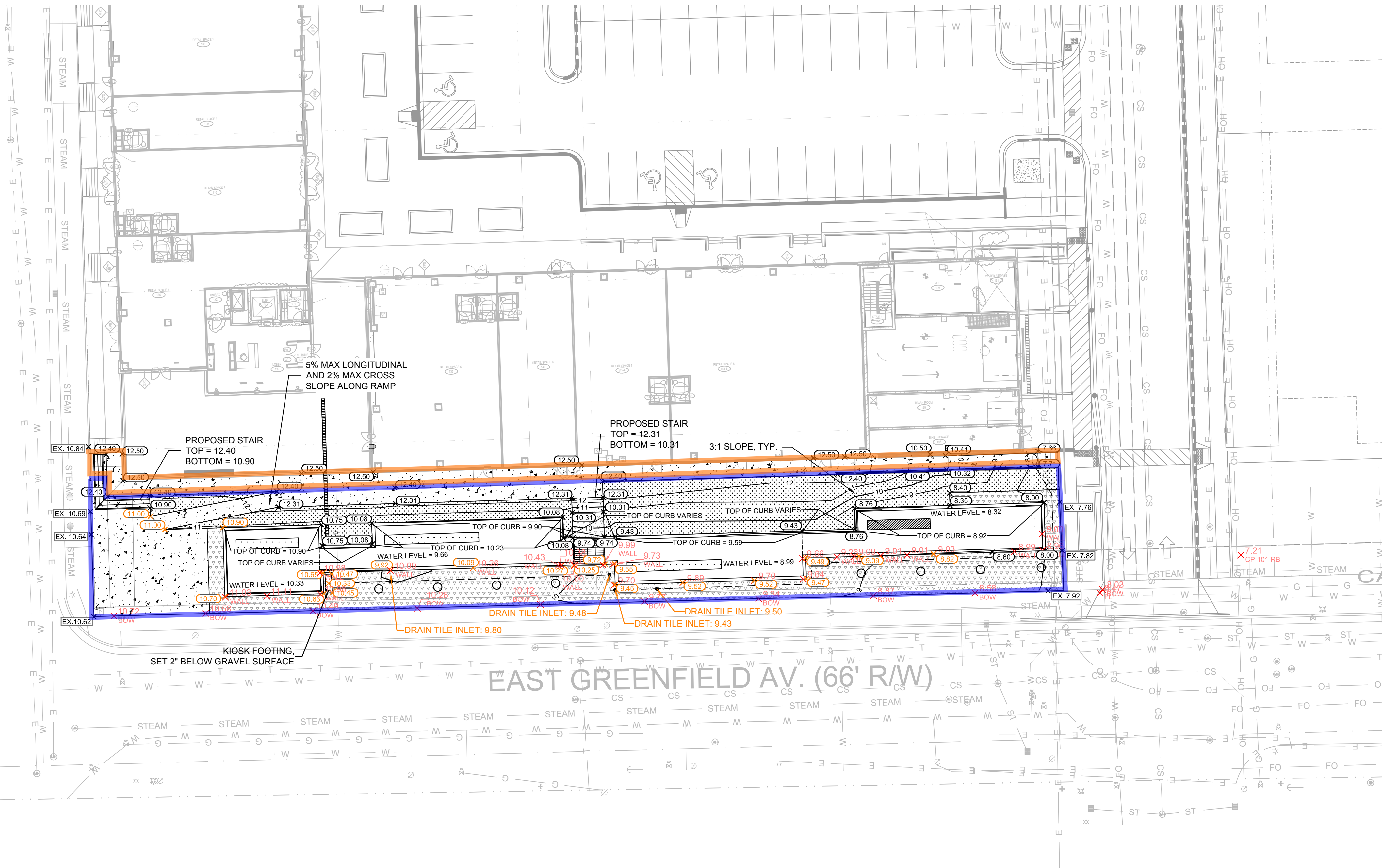
File: I:\Wangard Partners\15867- Freshwater Plaza Water Feature\060 CAD\IC - Civil\505-Grading Plan\15867 - SCHEME 2.dwg



CALL DIGGERS HOTLINE
1-800-242-8511
TOLL FREE

MS STATUTE 182.07(1)(a)
REQUIRES MIN. 3 WORK DAYS
NOTICE BEFORE YOU EXCAVATE
MILW. AREA 259-1181

THE UNDERGROUND UTILITY INFORMATION SHOWN ON THIS MAP IS BASED ON FIELD MARKINGS AND INFORMATION FURNISHED BY UTILITY COMPANIES AND THE LOCAL MUNICIPALITY. WHILE THIS INFORMATION IS BELIEVED TO BE RELIABLE, ITS ACCURACY AND COMPLETENESS CANNOT BE GUARANTEED.



- LEGEND:**
- 5" THICK CONCRETE WALK
 - LANDSCAPE AREA (REFER TO ARCHITECT PLANS)
 - GRAVEL/ GRANITE
 - EXISTING CONTOUR
 - PROPOSED CONTOUR
 - PROPOSED ASPHALT SPOT GRADE
 - SPOT GRADE CHANGED 10/24/2016
 - SPOT GRADES SHOT 10/21/2016

GENERAL NOTES:

- THE UNDERGROUND UTILITY INFORMATION SHOWN ON THIS DRAWING IS BASED ON FIELD LOCATIONS AND/OR RECORDS FURNISHED BY MUNICIPALITIES AND UTILITY COMPANIES. THE LOCATION AND ACCURACY OF WHICH CANNOT BE GUARANTEED. THERE MAY BE ADDITIONAL UNDERGROUND UTILITY INSTALLATIONS WITHIN THE PROJECT AREA THAT ARE NOT SHOWN.
- VERIFY ACTUAL LOCATIONS AND INVERTS IN THE FIELD. ANY POTENTIAL ERRORS, OMISSIONS, OR DISCREPANCIES SHALL BE BROUGHT TO THE ATTENTION OF THE ENGINEER PRIOR TO PROCEEDING WITH CONSTRUCTION.
- WORK TO BE COMPLETED IS INDICATED IN BOLD TYPE LINES AND EXISTING CONDITIONS ARE INDICATED BY LIGHT TYPE LINES.
- ELECTRONIC CIVIL FILES ARE AVAILABLE UPON WRITTEN REQUEST. DO NOT USE ELECTRONIC CIVIL FILES TO LAYOUT FOUNDATIONS, COLUMN LINES, LIGHT POLES, OR OTHER NON CIVIL SITE WORK. REFER TO ARCHITECTURAL DRAWINGS FOR DIMENSIONS OF BUILDING AND ARCHITECTURAL FEATURES.
- DIMENSIONS ARE FROM FACE OF CURB OR EDGE OF PAVEMENT.
- WORK WITHIN THE PUBLIC RIGHT OF WAY, INCLUDING BUT NOT LIMITED TO DRIVEWAY OPENINGS, SIDEWALK AND RAMPS, PAVING, AND CURB AND GUTTER SHALL BE COMPLETED PER MUNICIPAL AND/OR COUNTY REQUIREMENTS AND STANDARDS.
- EARTHWORK SHALL BE IN ACCORDANCE WITH GEOTECHNICAL ENGINEER'S RECOMMENDATIONS.

FRESHWATER WATER FEATURE
1ST AND GREENFIELD
MILWAUKEE, WISCONSIN

GRADING PLAN

CB #3 10-25-2016
CB #2 9-22-2016
CB #1 9-12-2016
ISSUED FOR CONSTRUCTION 8-31-2016
NO. REVISION DATE BY

DRAWING NO. 15867 - SCHEME 2.dwg

DRAWN BY: JWK

DATE: 9-22-2016

PROJECT NO: 15867

CHECKED BY: CTC

APPROVED BY:

SHEET NO.:

C 200



eppstein uhen : architects

milwaukee 333 East Chicago Street
Milwaukee, Wisconsin 53202
telephone 414.271.5350
madison 222 West Washington Ave, Suite 650
Madison, Wisconsin 53703
telephone 608.442.5350

PROJECT INFORMATION

Freshwater Plaza -
Mixed Use Building

1st and Greenfield
Milwaukee, Wisconsin

ISSUANCE AND REVISIONS

CONSTRUCTION DOCUMENTS

#	DATE	DESCRIPTION
1	08/09/16	CB#7
2	08/22/16	WATER FEATURE CONSTRUCTION DOCUMENTS

KEY PLAN

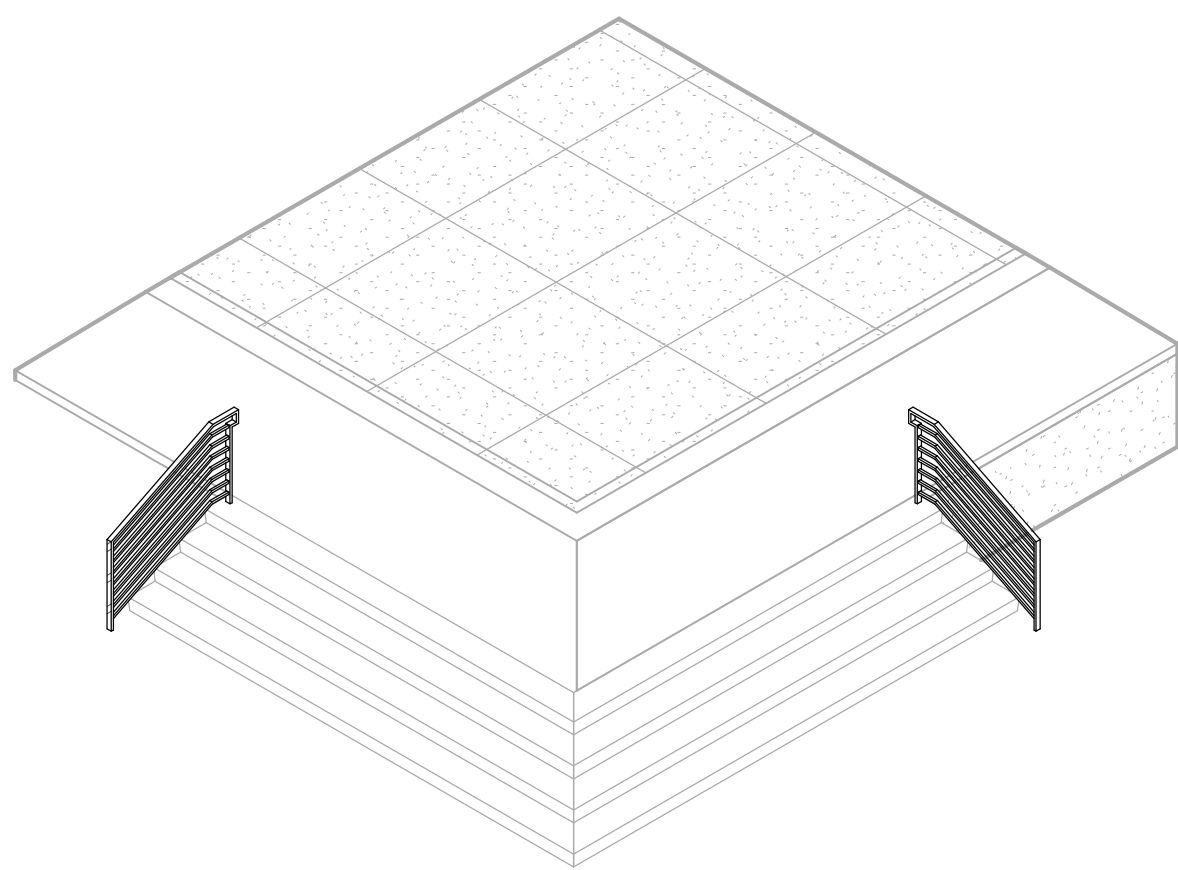
SHEET INFORMATION

PROJECT MANAGER	MO
PROJECT NUMBER	113247
DATE	11/13/2015

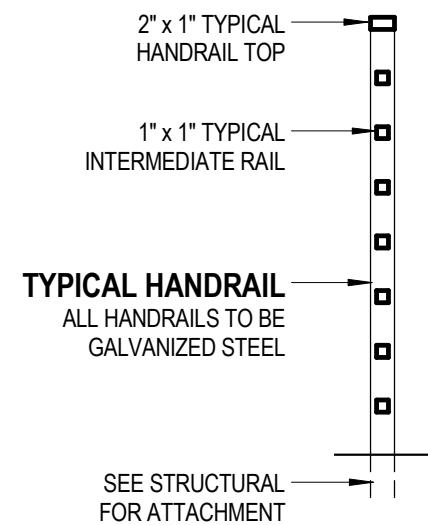
ARCH SITE PLAN

AS100

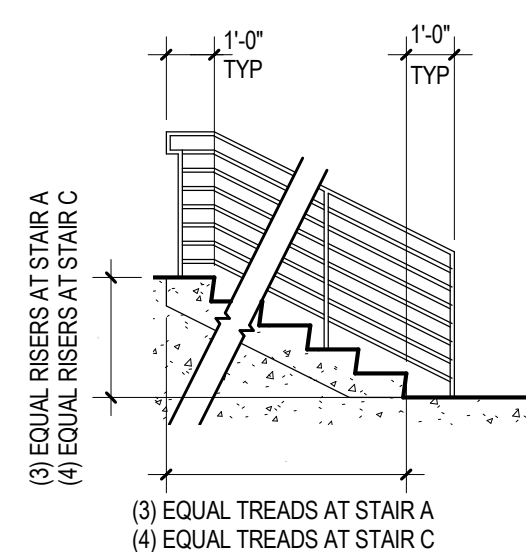
© Eppstein Uhen Architects, Inc.



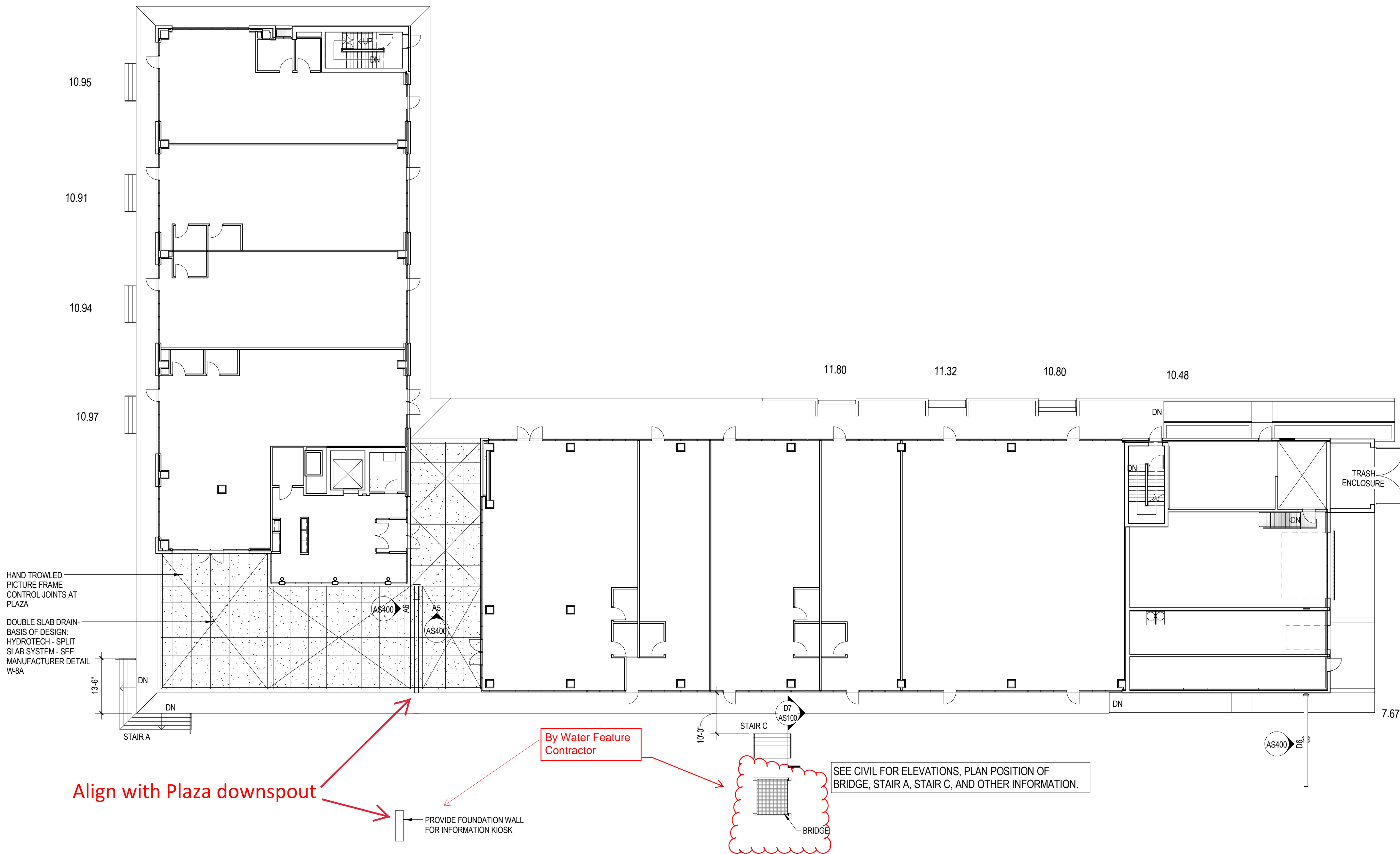
C1 RAILS AT PLAZA



D6 RAIL DETAIL
3/4" x 1'-0"



D7 TYPICAL STAIR SECTION
1/4" x 1'-0"



A4 ARCH SITE PLAN
1/16" = 1'-0"



eppstein uhen : architects
milwaukee 333 East Chicago Street
Milwaukee, Wisconsin 53202
telephone 414.271.5350
madison 222 West Washington Ave, Suite 650
Madison, Wisconsin 53703
telephone 608.442.5550

PROJECT INFORMATION

Freshwater Plaza -
Mixed Use Building

1st and Greenfield
Milwaukee, Wisconsin

ISSUANCE AND REVISIONS

CONSTRUCTION DOCUMENTS

#	DATE	DESCRIPTION
1	08/09/16	CB#7
2	08/22/16	WATER FEATURE CONSTRUCTION DOCUMENTS

KEY PLAN

SHEET INFORMATION

PROJECT MANAGER MO
PROJECT NUMBER 113247
DATE 11/13/2015

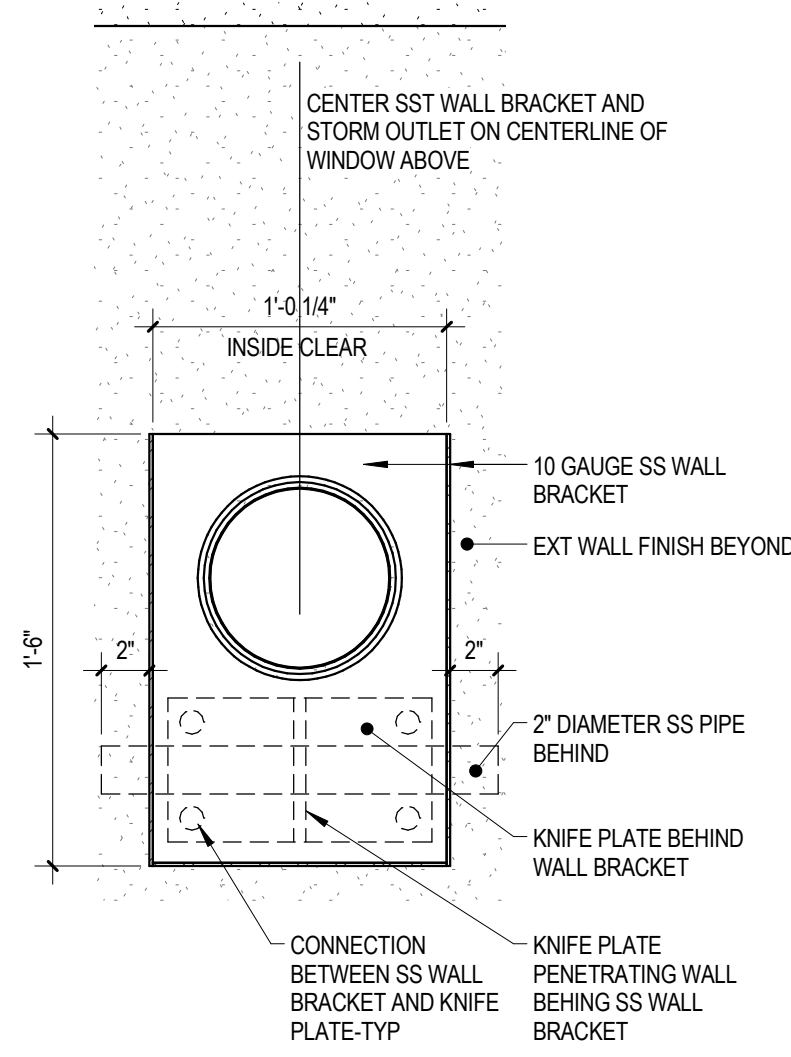
ARCH ENLARGED
SITE PLANS

AS400

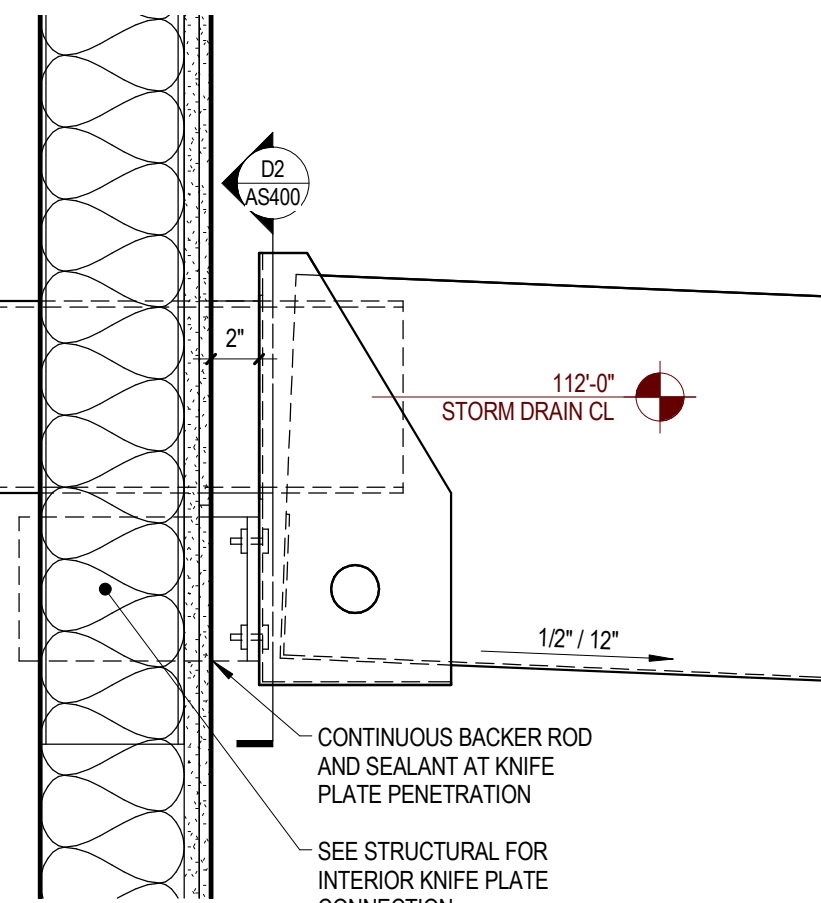
© Eppstein Uhen Architects, Inc.

FOR REFERENCE ONLY. ALL WORK ON THIS SHEET WILL BE COMPLETED BY OTHERS

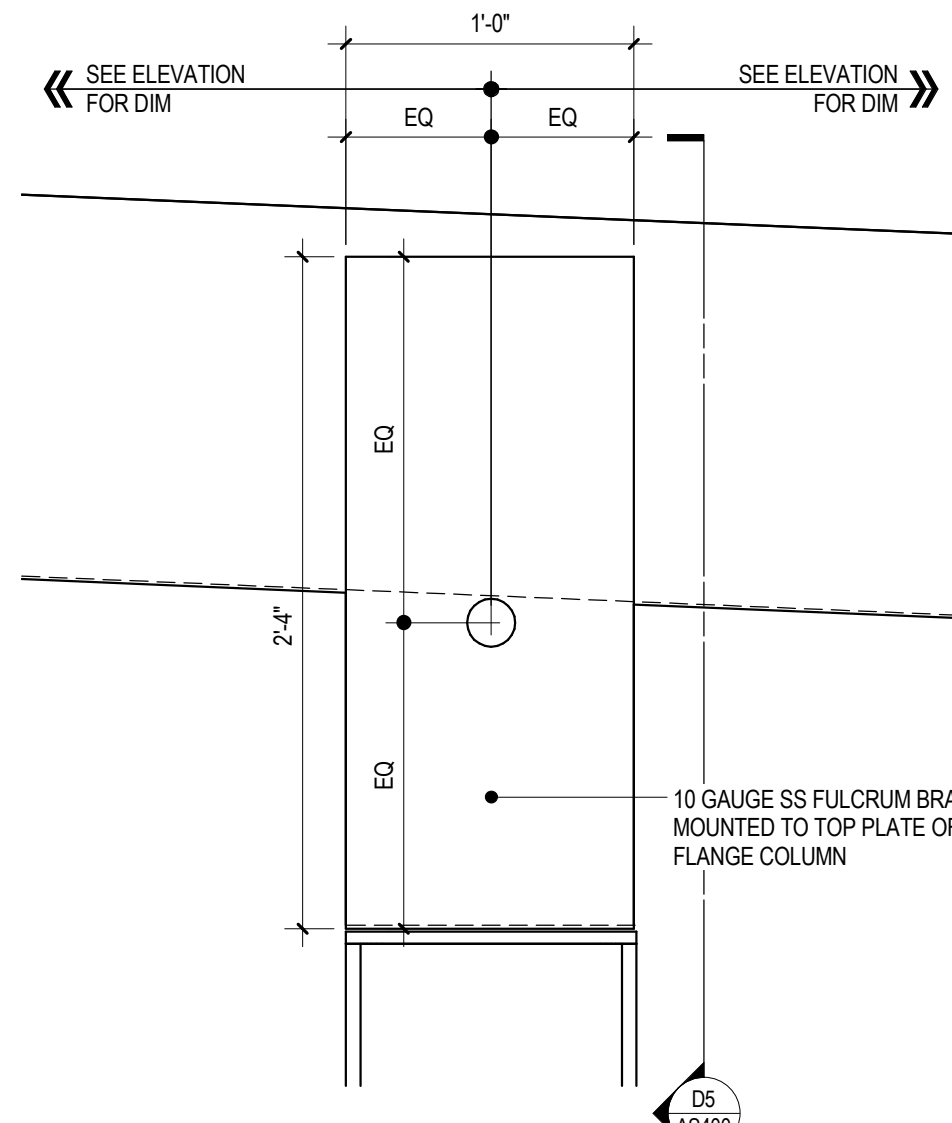
E



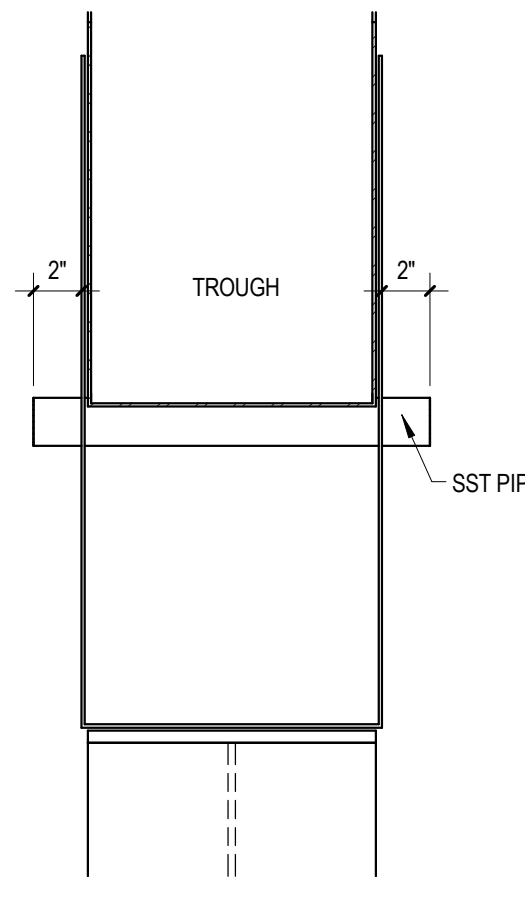
D2 WALL BRACKET ELEVATION
FOR REFERENCE ONLY



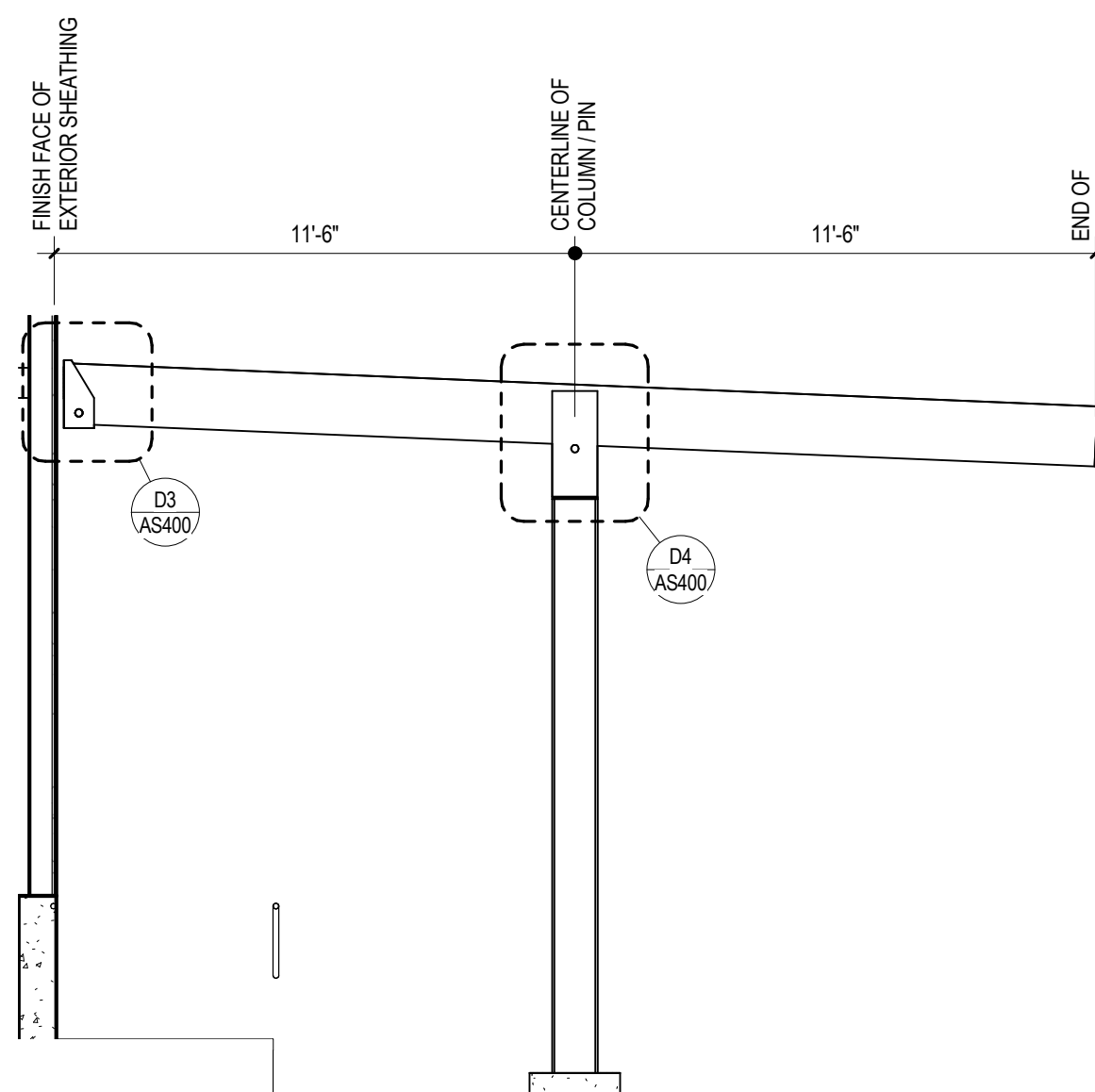
D3 WALL BRACKET DETAIL
FOR REFERENCE ONLY



D4 FULCRUM DETAIL
FOR REFERENCE ONLY

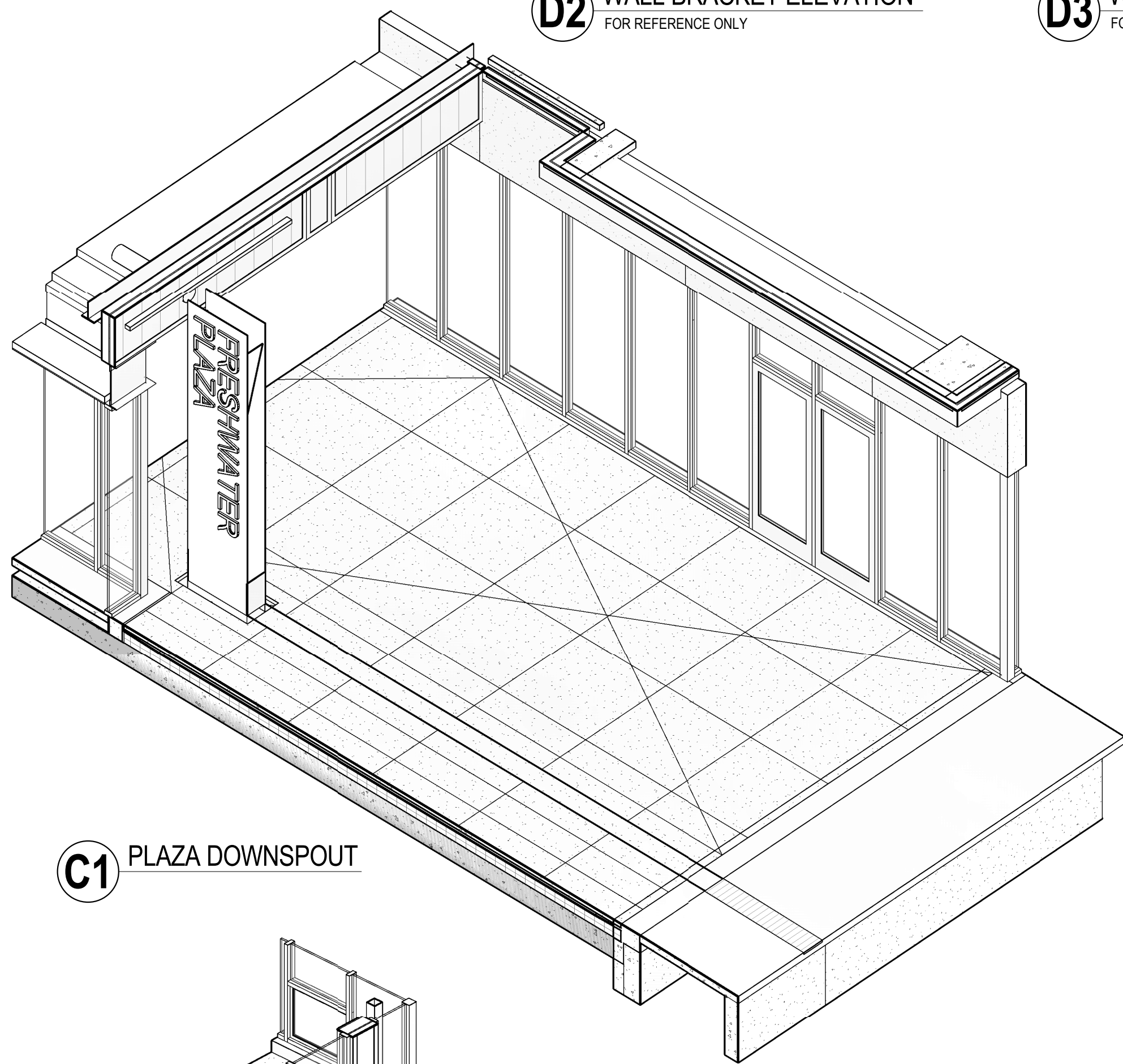


D5 FULCRUM PIN DETAIL
FOR REFERENCE ONLY



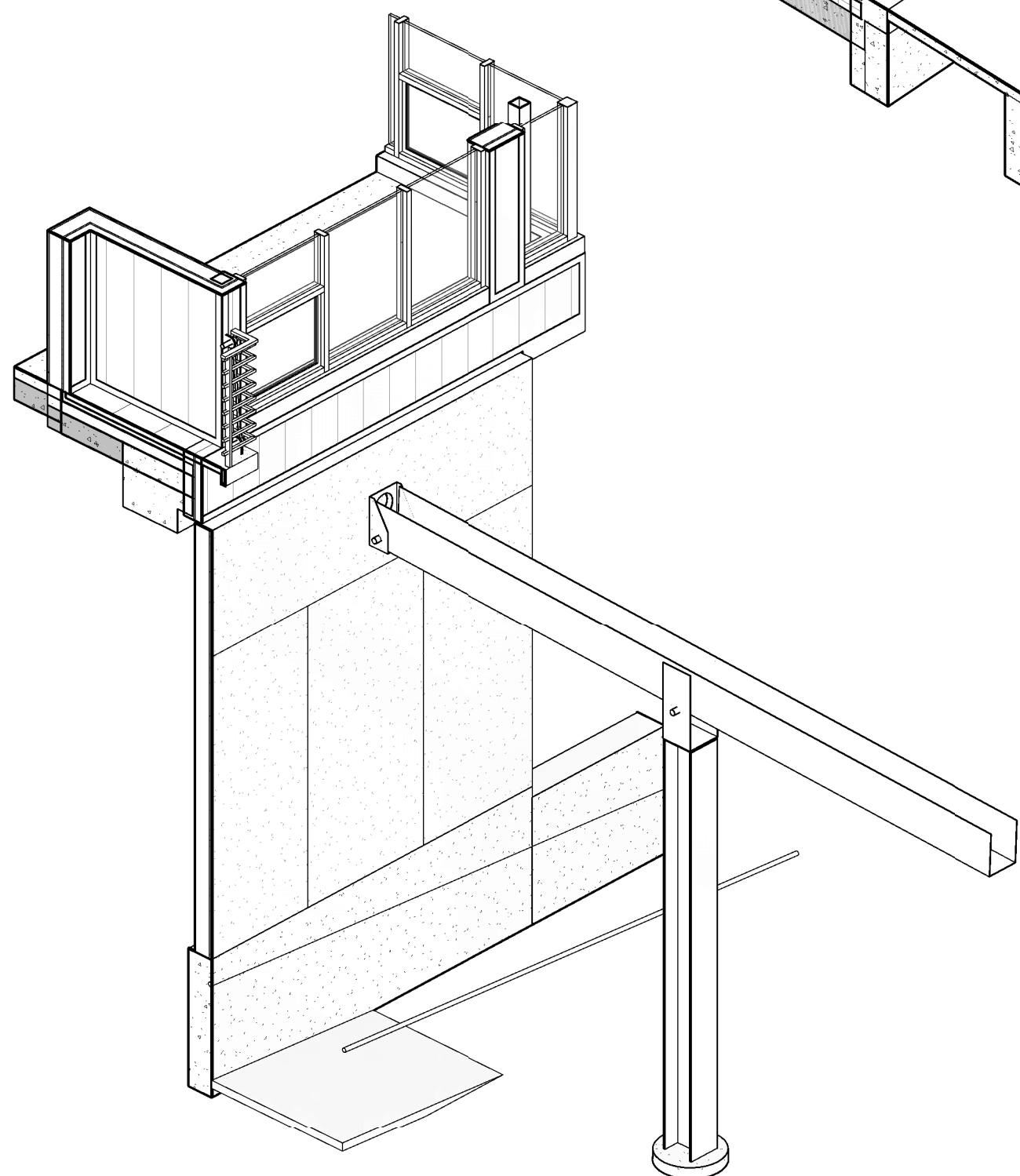
D6 ELEVATED DOWNSPOUT ELEVATION
FOR REFERENCE ONLY

D



C1 PLAZA DOWNSPOUT

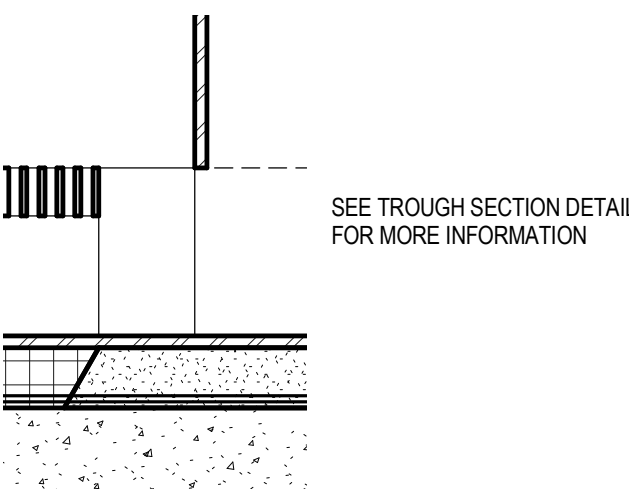
C



B1 ELEVATED DOWNSPOUT

B

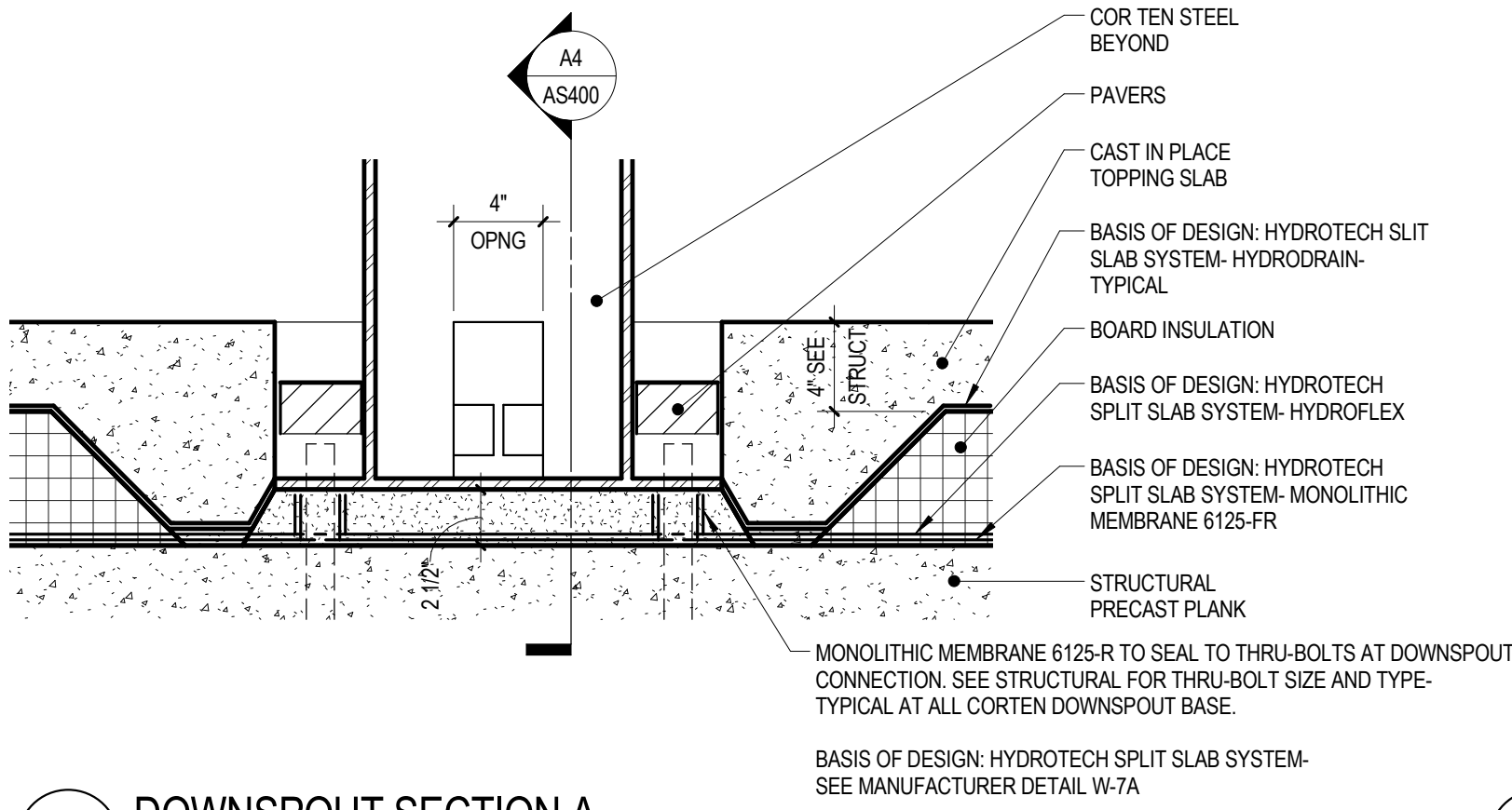
A



A1 TROUGH TO DOWNSPOUT DETAIL
FOR REFERENCE ONLY

1

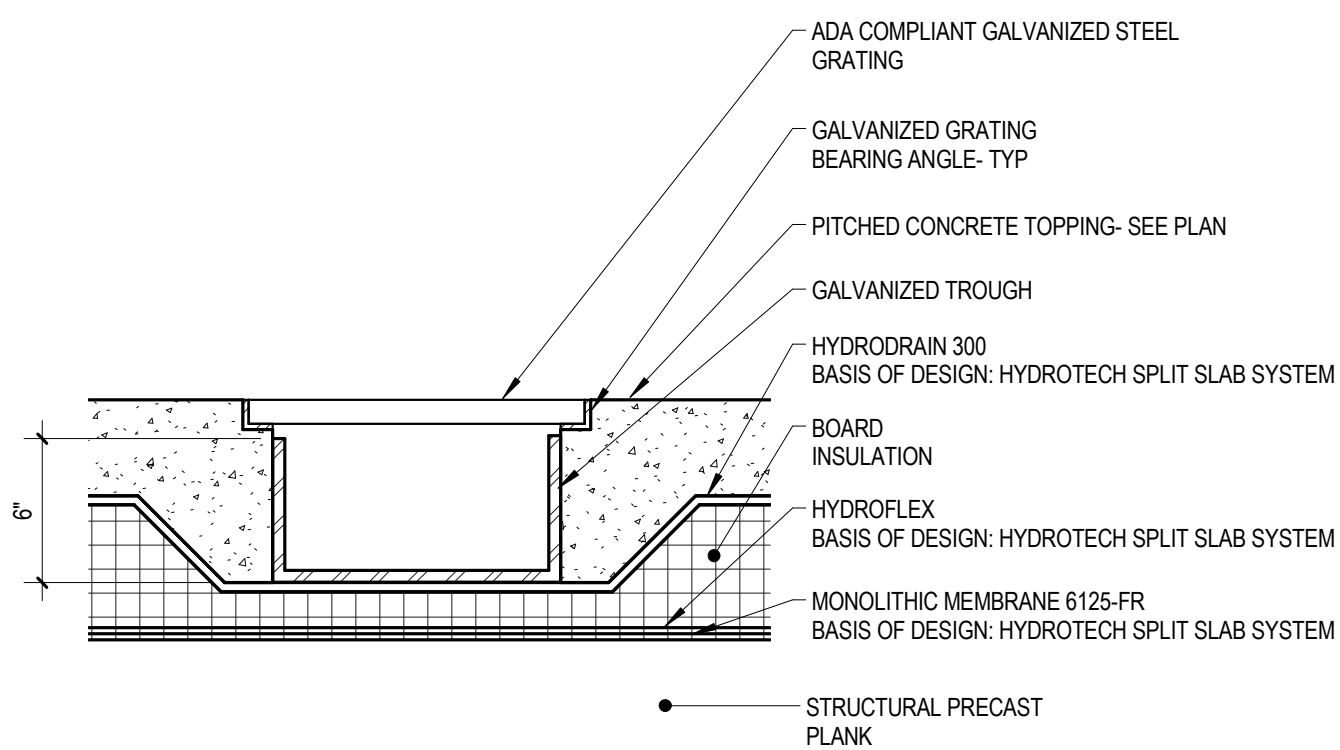
2



A2 DOWNSPOUT SECTION A
FOR REFERENCE ONLY

2

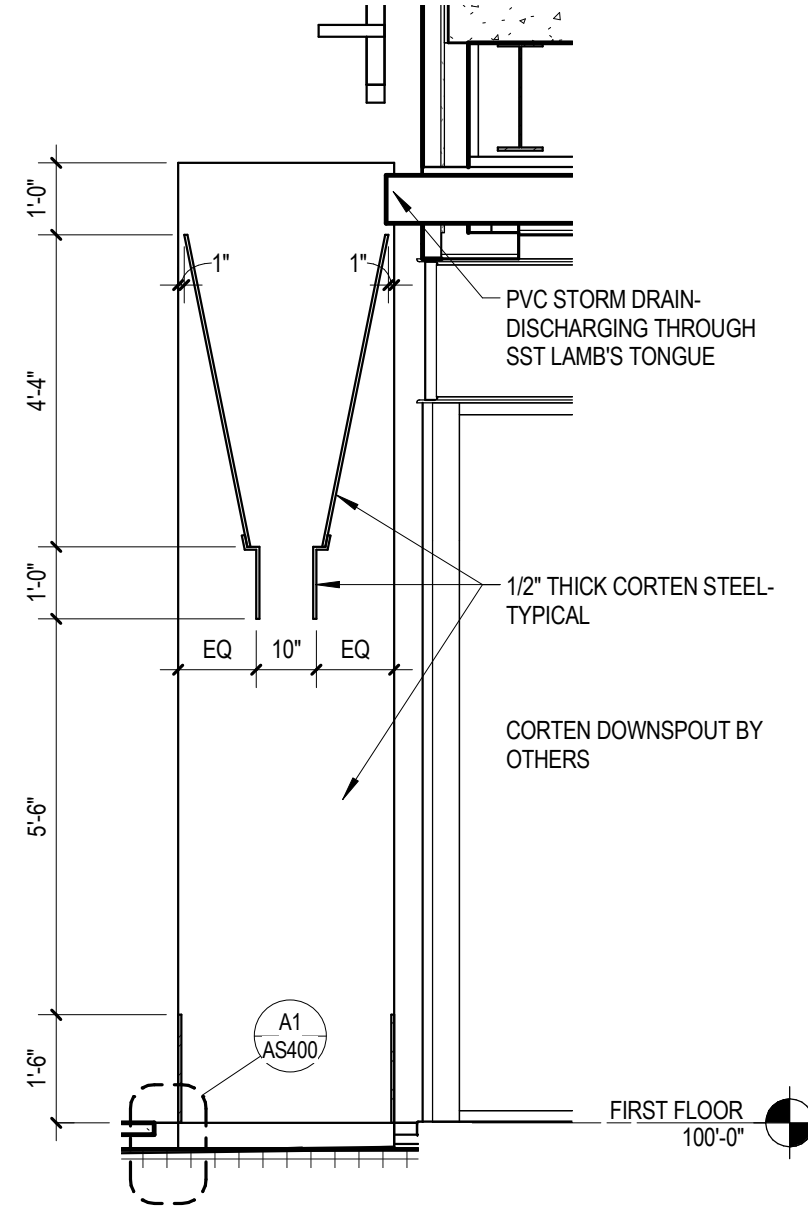
3



B3 TROUGH DETAIL
FOR REFERENCE ONLY

3

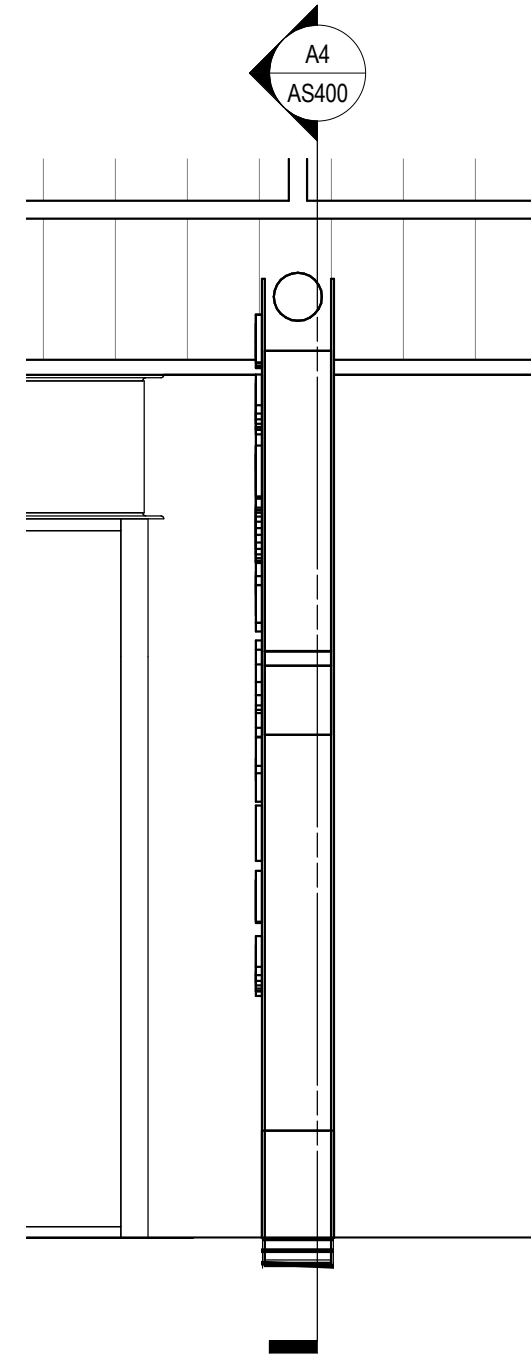
4



A4 DOWNSPOUT SECTION B
FOR REFERENCE ONLY

4

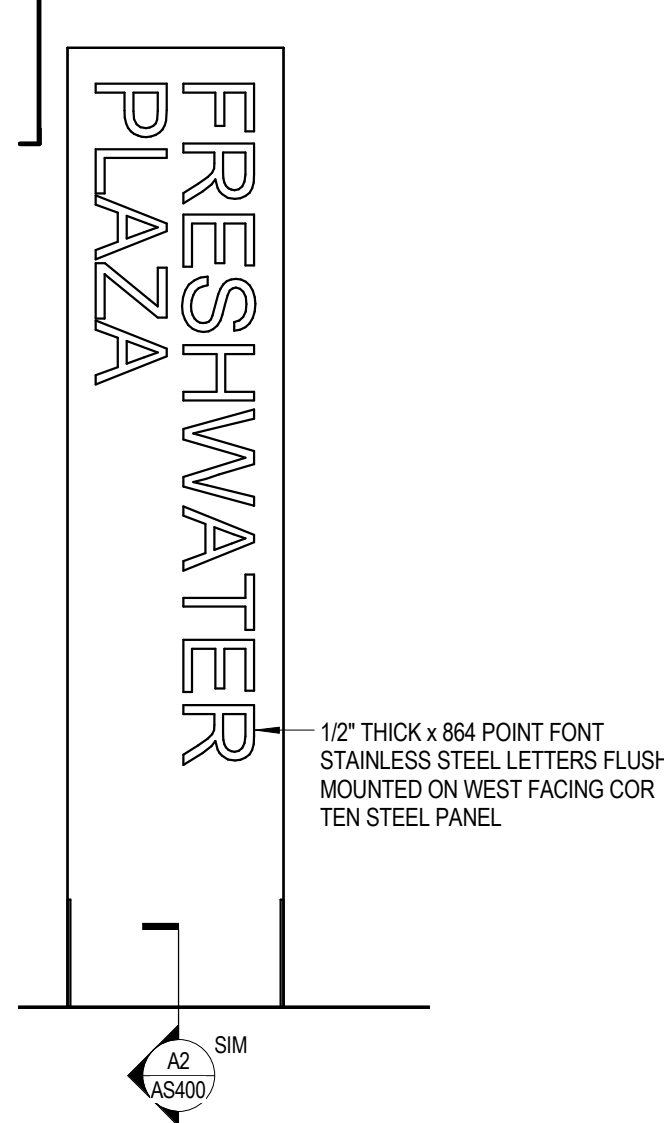
5



A5 DOWNSPOUT - SOUTH
FOR REFERENCE ONLY

5

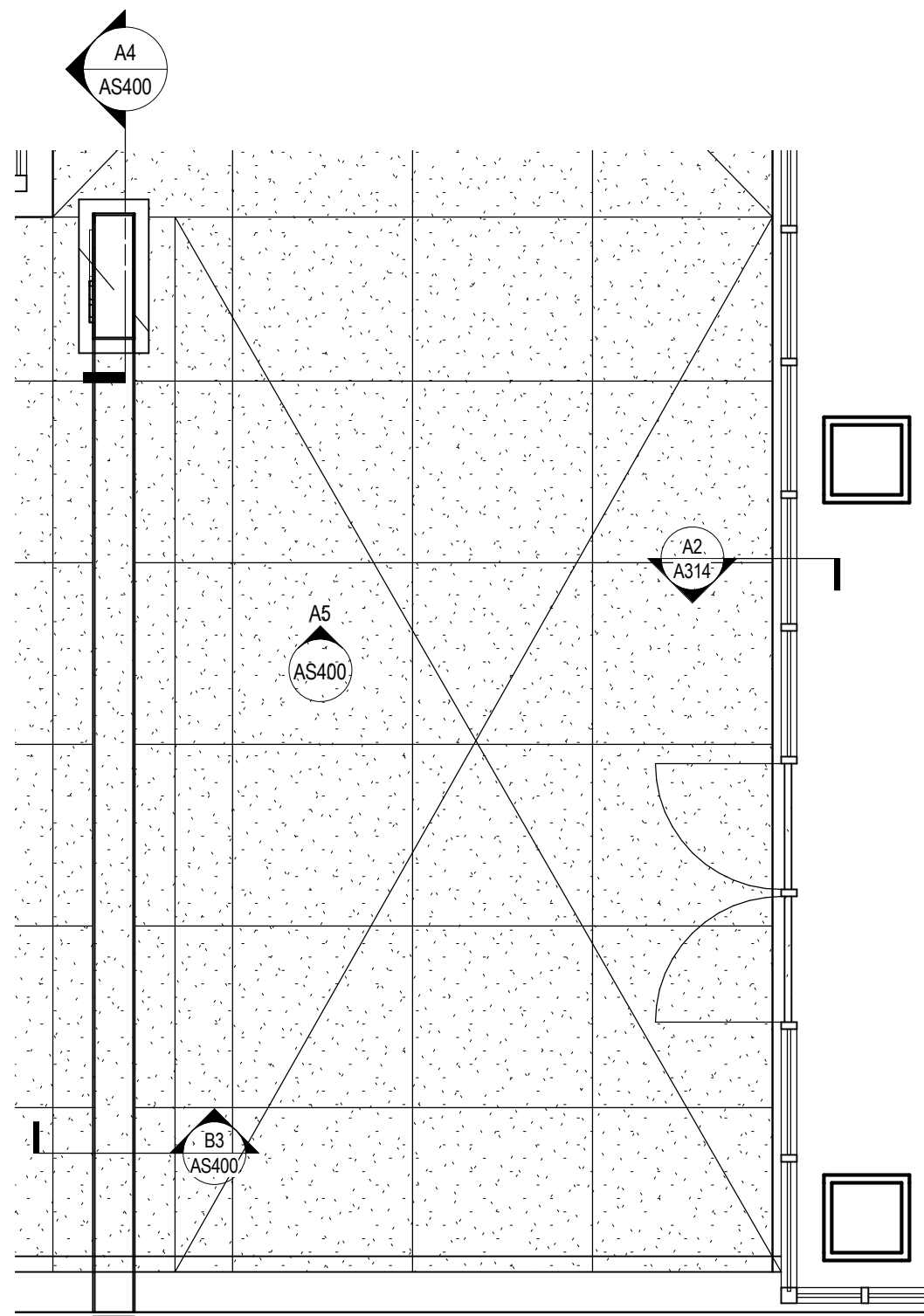
6



A6 DOWNSPOUT WEST
FOR REFERENCE ONLY

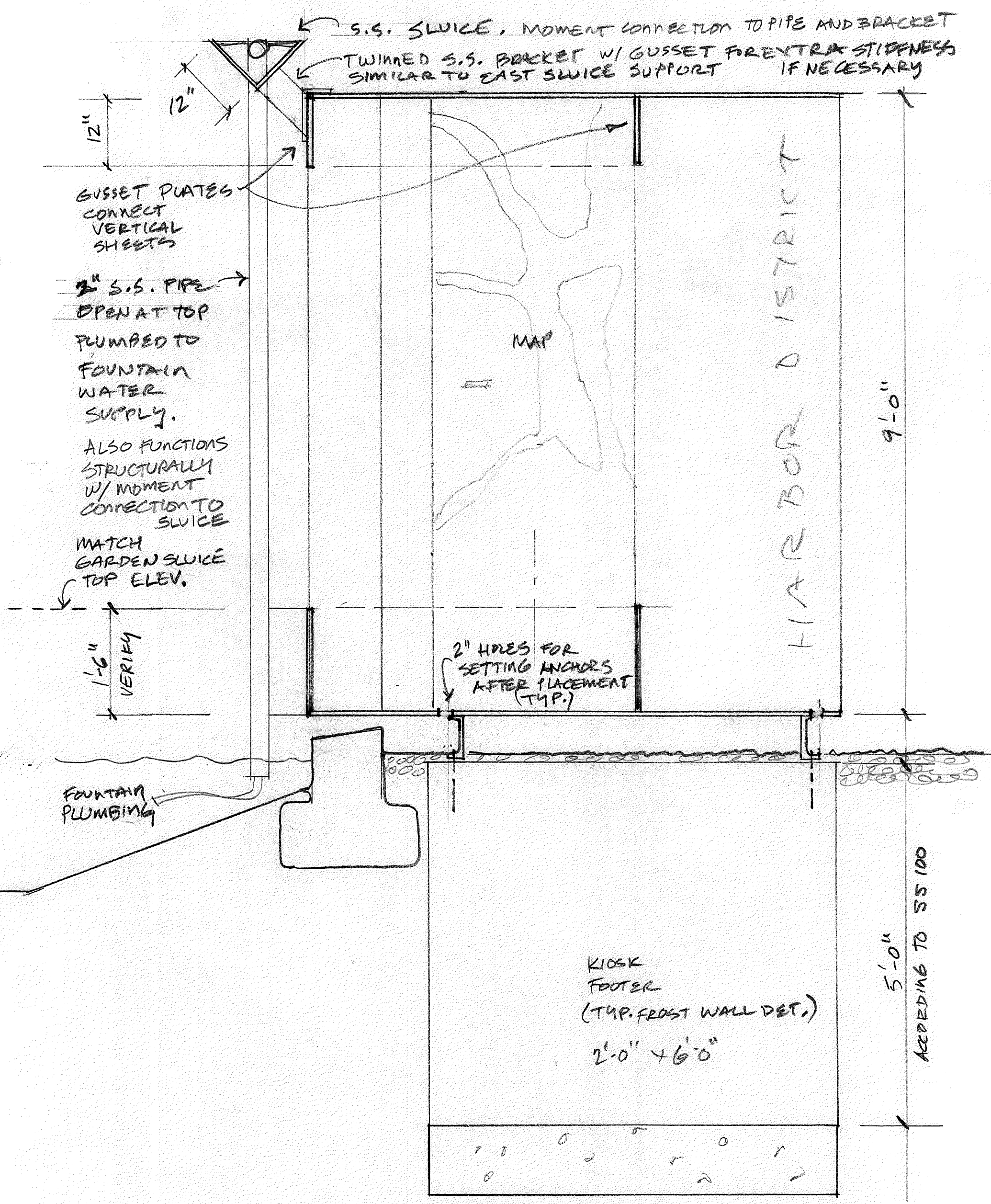
6

7



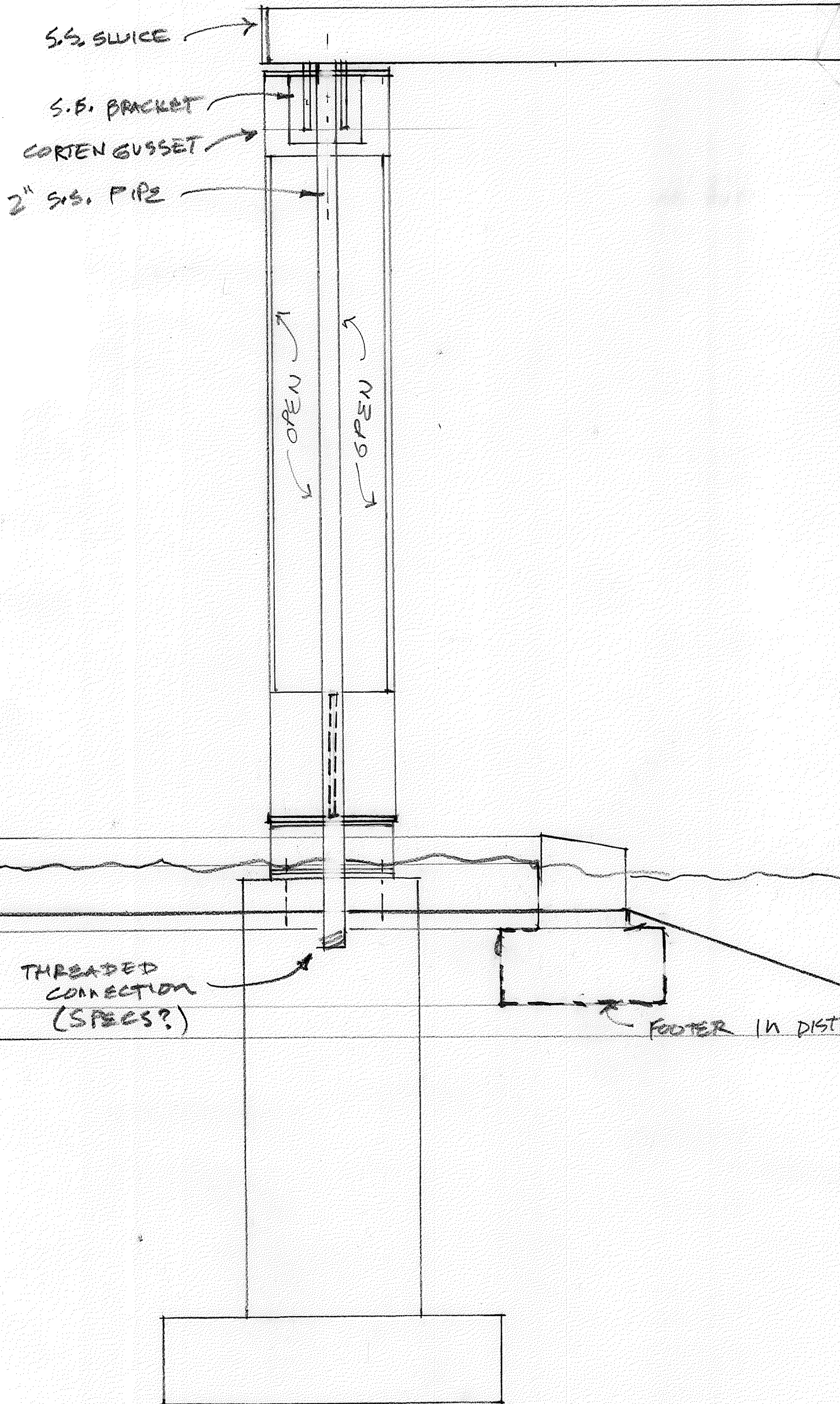
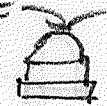
A7 ARCH SITE ENLARGED PLAN
FOR REFERENCE ONLY

7



KIOSK - SECTION FACING EAST
 3/4" = 1'-0" NW
 9/20/16

NOTE: LIGHT FIXTURE
TO BE DETAILED



POOL 1

FOOTER IN DISTANCE

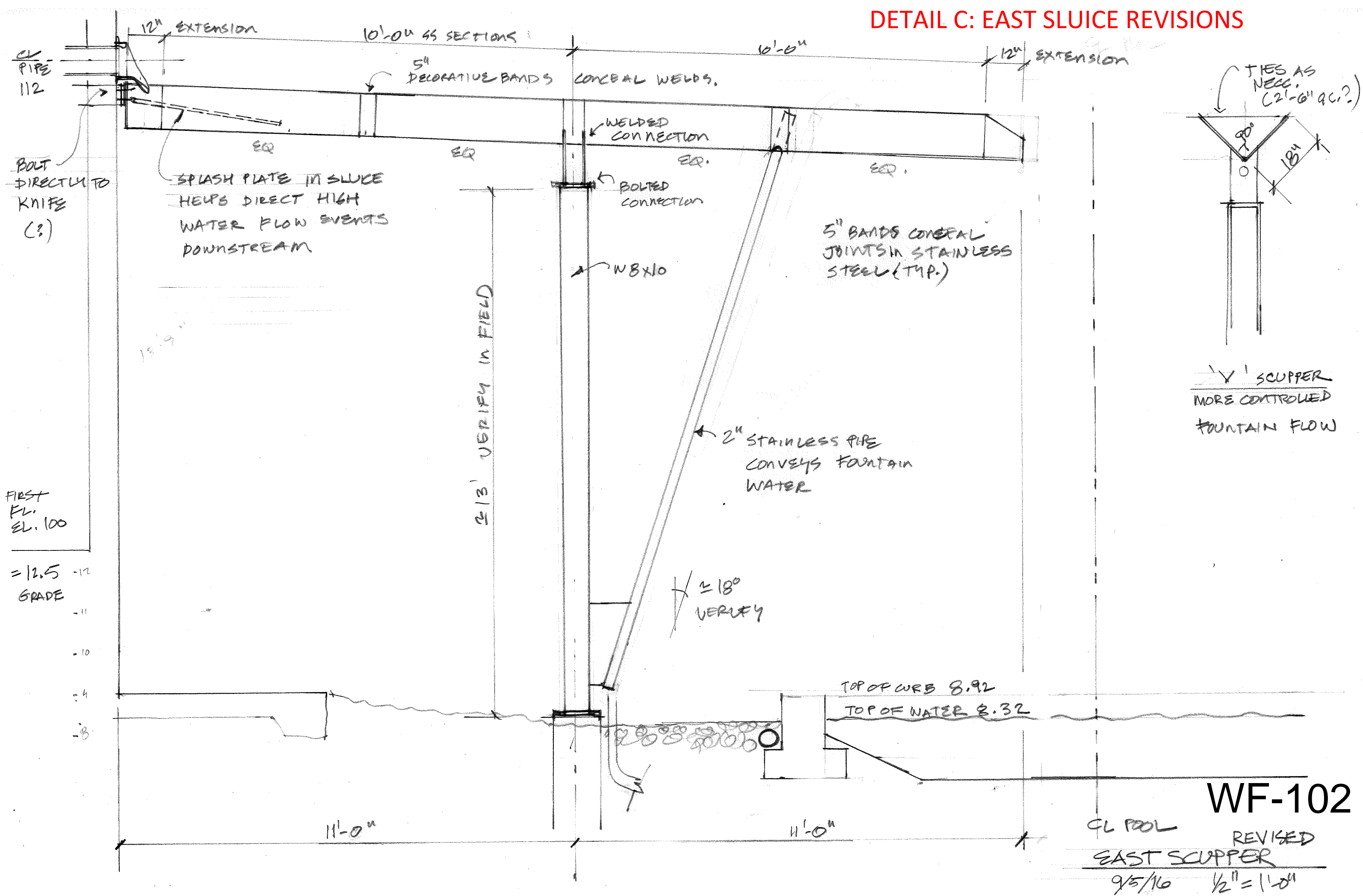
KIOSK - COMPOSITE SECT. STUDY

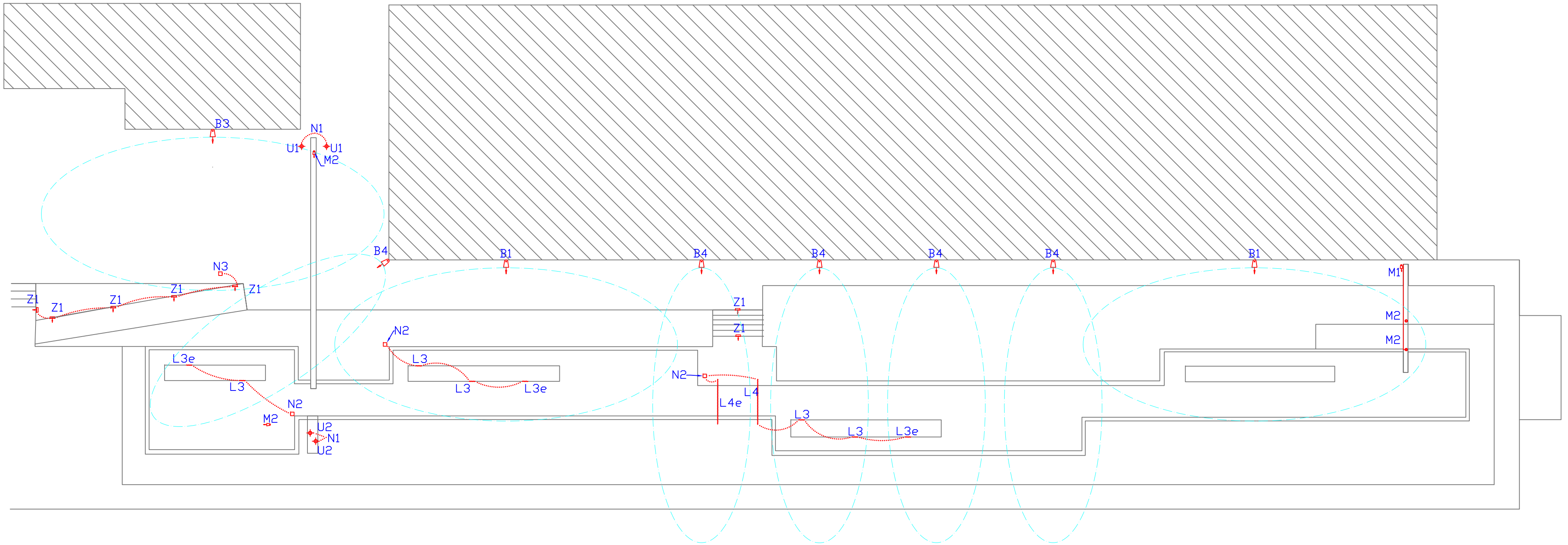
3/4" = 1'-0" SW

9/20/16

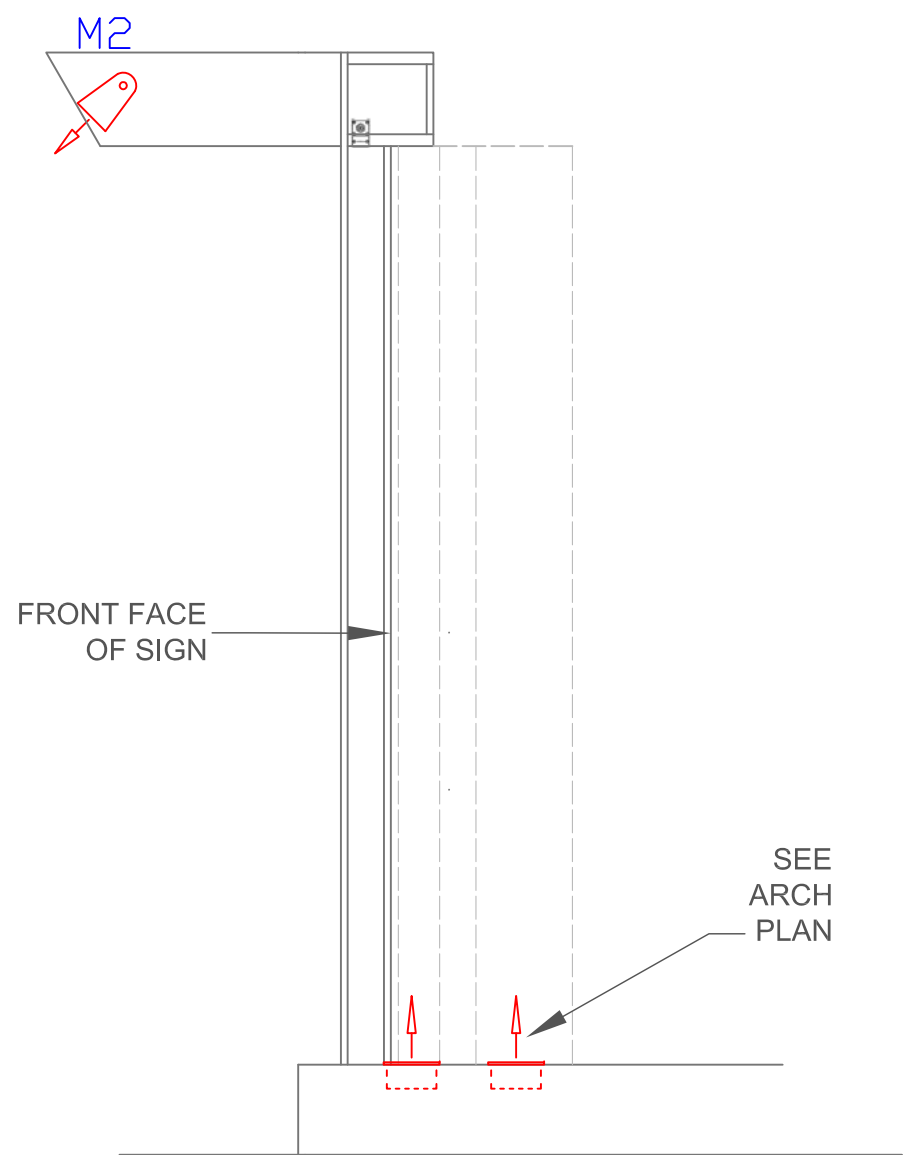
WF-101

DETAIL C: EAST SLUICE REVISIONS

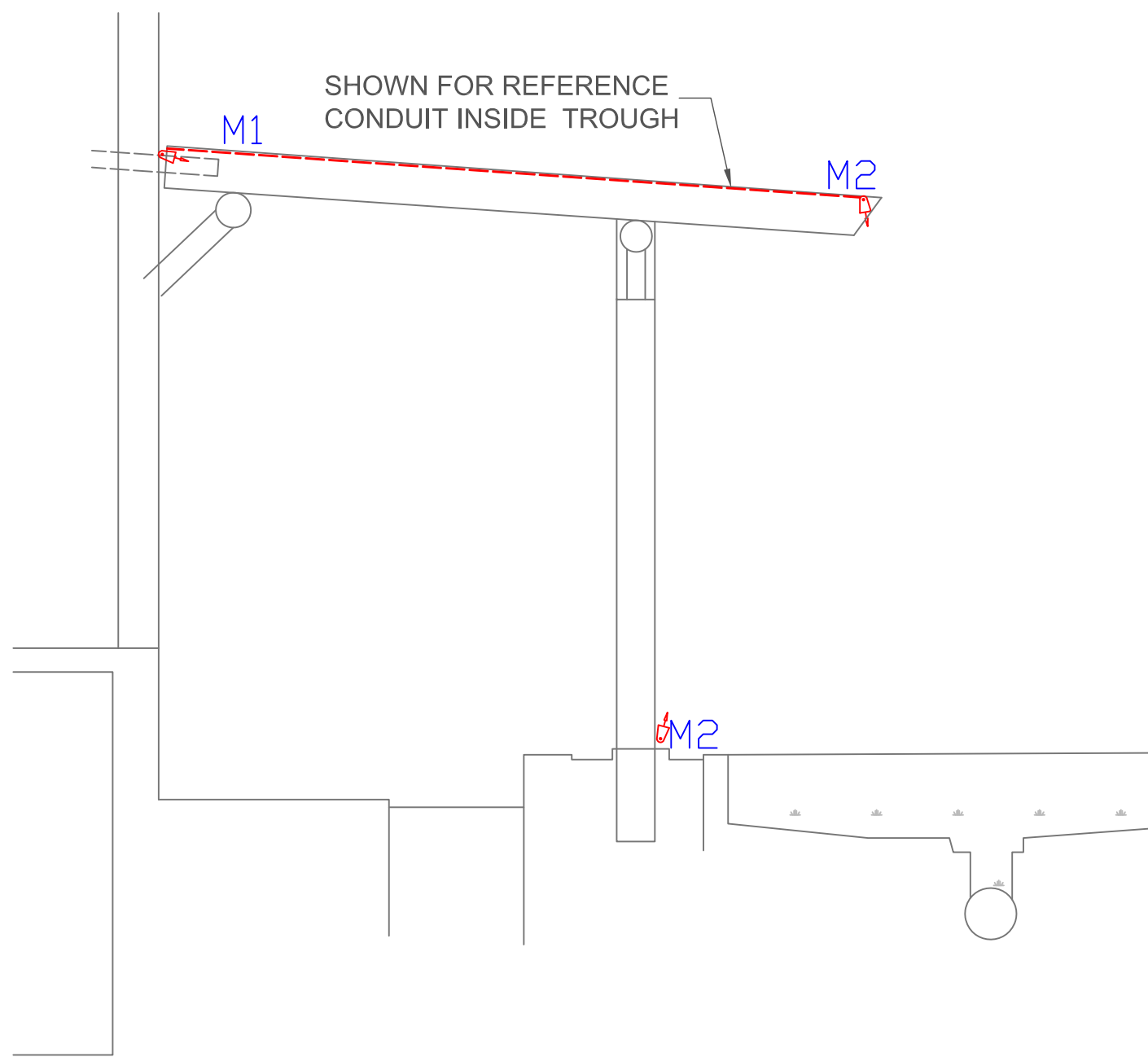




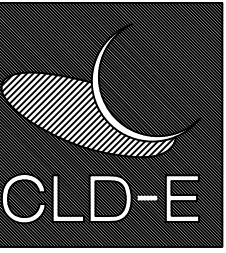
1 FRESHWATER PLAZA LIGHTING PLAN
NTS



2 FRESHWATER PLAZA LIGHTING - SIGN KIOSK SECTION
NTS



3 FRESHWATER PLAZA LIGHTING SECTION - TROUGH
NTS



CREATIVE LIGHTING
DESIGN & ENGINEERING
1140 W13843 CEDAR LANE
GERMANTOWN, WI 53022
PHONE 262 242 4432
FAX 262 242 1020
WWW.CLD-E.COM
INFO@CLD-E.COM

FRESHWATER PLAZA LIGHTING

CONSTRUCTION DOCUMENTS

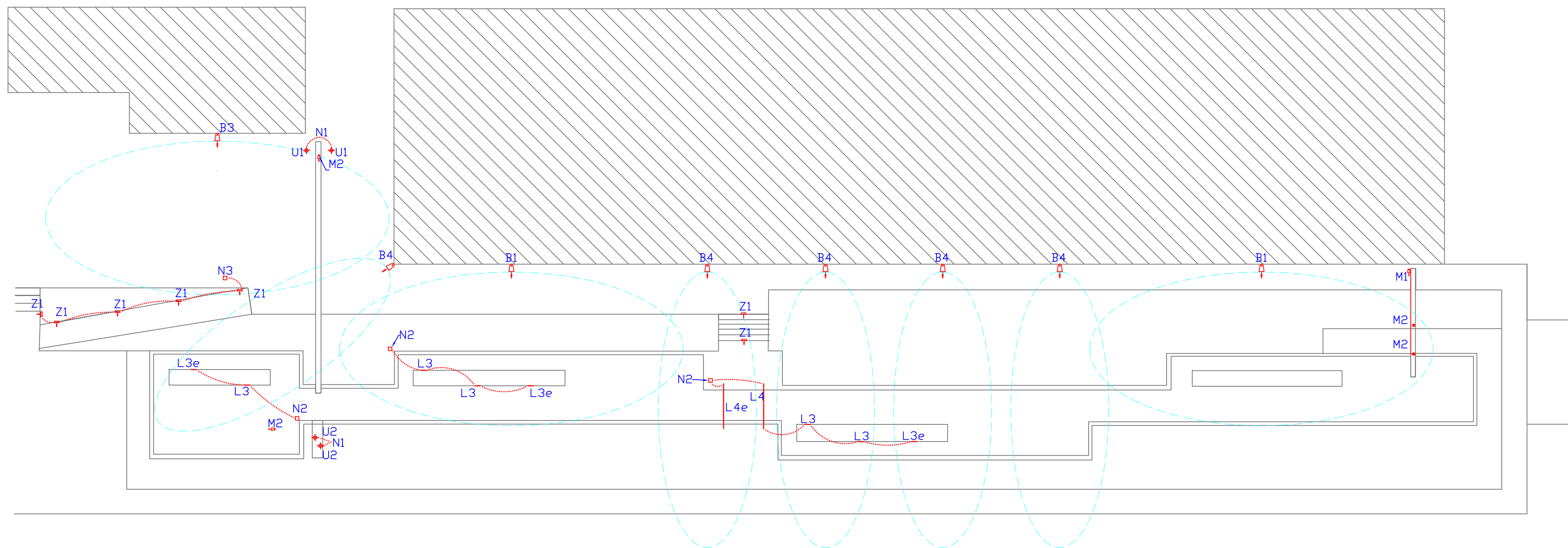
ARCHITECTURAL LIGHTING DESIGN

EL-01

1ST ST & GREENFIELD AVE
MILWAUKEE, WI

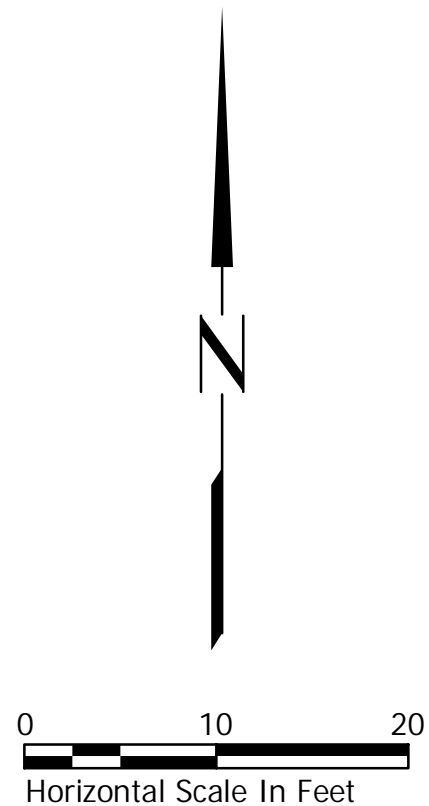
09/09/2016

NOT FOR CONSTRUCTION



CREATIVE LIGHTING DESIGN & ENGINEERING, LLC												
Freshwater Plaza												
LIGHTING FIXTURE SCHEDULE												
September 19, 2016												
											NOTES	
TYPE	LOCATION	EFFECT	FIXTURE DESCRIPTION	MANUFACTURER	PART #	WATTS	VOLTS	EST #	LAMPING	SPECF'N	INSTALL	
B1	Building Balconies	Blue Moonlight wash	Lumenbeam Large Blue LED 40d Floodlight, Visor, White Finish, Short Yoke, Horiz. Spread Lens	Lumenpulse	LBL-volts-BLUE-FL-LSLH-WH-NO-SY / LBL-VS-WH-BK	50	120-277	2	Included		1	
B3	Building Paraphet	White Plaza Seating Wash	Lumenbeam Large 2700K LED 40d Floodlight, Visor, White Finish, Horizontal Spread Lens	Lumenpulse	LBL-volts-27K-FL-LSLH-WH-NO-SY / LBL-VS-WH-BK	50	120-277	1	Included		1	
B4	Building Balconies	Blue Moonlight wash	Lumenbeam Medium Blue LED 20d Floodlight, Visor, White Finish, Short Yoke, Verti. Spread Lens	Lumenpulse	LBM-volts-BLUE-NF-LSLV-WH-NO-SY / LBM-VS-WH-BK	28	120-277	5	Included		1	
L1			Deleted									
L2			Deleted									
L3	At Planters	Highlight Water @ Planter	Linear LED Strip, 12" long, HO narrow beam, 2700K, Bronze finish, Screw Mnt, 24vdc	Luminii	BOSW-12"-27K-HO-Graze-S-BZ-F3 / F4 (see note)	6.5	24vdc	8	Included	A, C	5	
L4	Under edge of Bridge	Glow under bridge	Linear LED Strip, 72" long, SO wide beam, 2700K, Bronze finish, Screw Mnt, 24vdc	Luminii	BOSW-72"-27K-SO-F-S-BZ-F3 / F4 (see note)	19.2	24vdc	2	Included	A, C	9	
M1	At troughs	White Spotlights	6 Degree LED spot, 2700k, Bronze Finish, Non-dim, Canopy Cover Mnt., Visor	Lumenpulse	LBS-volts-27K-VN-BRZ-NO-CN / LBS-VS-BRZ-BK	14	120-277	1	Included		6	
M2	Trough Waterfall	White Spotlight	6 Degree LED spot, Vertical Spread Lens, 2700k, Bronze Finish, Non-dim,Yolk Mnt., Visor	Lumenpulse	LBS-volts-27K-VN-LSLV-BRZ-NO-CRC / LBS-VS-	14	120-277	4	Included		8	
N1	Kiosk J-Box	Power Supply	Power Supply for U1, U2, 20 watt, Enclosure Req'd.	BK Lighting	TRe20	1w-20w	120-277	3	na	C		
N2	12" Above Grade	Power Supply	96 watt max., 24vdc Power supply for L3, L4, Wet location enclosure.	Luminii	PSD-96-24-volt	71,68,68,68	120,240,277	3	na	A, C		
N3	12" Above Grade	Power Supply	Power Supply for Z1 (or U1), 60 watt, Wet location enclosure.	BK Lighting	TR-60-volt	25	120, 277	1	na	C		
U1	Exterior	Pipe/Trough Uplight	In-grade Uplight, Brass Mitique, AR-111 REMOTE Transformer, SORAA lamp	BK Lighting	B-C02-AR-RS-0-MIT-GM-R	15	12VAC	2	SR111-12-08D-927-03	C	3	
U2	Kiosk	Signage Uplight	In-grade Uplight, Brass Mitique, Integral LED, REMOTE Transformer,	BK Lighting	B-CO2-LED-RS-e64-WFL-MIT	7	12VAC	2	Included	C	2	
Z1	Walls @ steps	Wash onto steps	Step Light, Backbox Mnt, Rectangular, Brass Mitique Finish, 2700k LED, 12VAC	BK Lighting	B-SQ-LED-e100-A9-MIT	5	12VAC	7	Included	C	7	
GENERAL NOTES:												
<ul style="list-style-type: none">• This design includes plaza water feature only. Lighting for oher walk and step areas, including West steps, are to be designed by others.• Unless otherwise shown, lighting controls and zones by contractor, and to comply with Local Energy Code. All controls and switch locations to be verified with owner.• Fixture quantities are estimates only, contractor to verify actual quantities. Contractor to verify and include all lamps and accessories for a complete, operating system. Contractor to provide owner with lighting and control system that complies with all local, state and national codes and industry practice. Contractor to provide one-year warranty on all lighting and control equipment from date of turn over to owner.• Hide all controllers and transformers from view. Must be in accessible locations for possible maintenance• Contractor to verify Loads on all controllers. Confirm voltage and power connections to all dimmers prior to energizing.• Verify with Mfgr all fixture components for a complete system before ordering.• Dimming and Driver compatibility needs to be verified before ordering fixtures• Maintain voltage drop between remote transformers and fixtures to 3% or lower• Field Verify all measurements and run lengths before ordering fixtures.• Contractor to verify suitable UL or similar listing on all products												
SPECIFICATION NOTES:												
A	VERIFY LENGTHS and components for a complete system with mfgr. Exact length must be factory ordered. "e" Type letter suffix indicated end unit -order F3 single connector for end of runs, or F4 dual connector for middle of runs. 48" Joiner is p/n IP67-48, or supply wires may be custom ordered.											
B	Requires 0-10v dim Control. Other dimming control options acceptable.											
C	Requires Remote power supply. Two styles (PSV & PSD) and wattages available - Verify w/Mfgr. Locate N1 & N2 hidden in Bench vertical supports per architect.											
INSTALLATION NOTES:												
1	Locate and attach fixture B3 at front edge of roof as shown on plan, center B4 between balconies, Locate and attach B1 at front edge of roof, top left corner of the brick masonry wall, the front edge of the roof at the right corner of the window on the prefinished metal panel portion. Aim out for even coverage of plaza.											
2	Locate per architect detail at base of Kiosk signage, each side.											
3	Install so paver is flush w/ finish walk, center 6" in front of vertical trough. Aim onto trough 2/3r'ds up face.											
4	Install facing down to wash Kiosk face, 4"-6" in front of lettered side. Aim 2/3 up face. Hide supply wiring, if possible, or route supply wiring through base. Verify any exposed wiring w/ architect.											
5	Locate at and attach to Wier to illuminate water stream. Hide direct view of fixture. Route Wiring along planter hidden from view and route to accesable power supply.											
6	Locate M1 4-6" from surface to be illuminated and aim 2/3r'ds up/out along surface.											
7	Mount 12" min above steps or just under cap of wall at consistant height.											
8	Mount M2 above downspout 18" from building façade, or inside trough at end to aim down water. Align lens ribs perpendicular to trough. Center on downspout and aim down waterway.											
9	Mount L4 under bridge, approx. 2"-4" from outside edge, hide strip from direct view.											

Plot Date: 10/01/2016 - 11:37am
Drawing name: V:\1938\active\193803411\CAD\Drawings\193803411-L102.dwg
Xrefs: C:\100 SITE_14160-paving model_14160-v.csm C:\200-GRADING_15867 - PAVING



Plant Schedule						
Key	Botanical Name	Common Name	Qty.	Size	Root	Spacing
DECIDUOUS TREES						
BN	Betula nigra 'Heritage'	Heritage River Birch (single stem)	19	3' Cal.	B&B	as shown
PERENNIALS/GRASSES						
AG	Andropogon gerardi	Big Bluestem	15	1 Gal.	Container	30" o.c.
BA	Baptisia australis	Blue Wild Indigo	30	1 Gal.	Container	36" o.c.
EP	Echinacea purpurea	Purple Coneflower	45	1 Gal.	Container	30" o.c.
LP	Liatis punctata	Dotted Blazing Star	76	1 Gal.	Container	24" o.c.
MD	Monarda didyma	Bee Balm	18	1 Gal.	Container	24" o.c.
PV	Panicum virgatum	Switch Grass	72	1 Gal.	Container	30" o.c.
RP	Ratibida pinnata	Yellow Coneflower	29	1 Gal.	Container	30" o.c.
RH	Rudbeckia hirta	Black-Eyed Susan	61	1 Gal.	Container	24" o.c.
SN	Sorghastrum nutans	Indian Grass	46	1 Gal.	Container	30" o.c.
SH	Sporobolus heterolepis	Prairie Dropseed Grass	26	1 Gal.	Container	24" o.c.
VV	Veronicastrum virginicum	Culvers Root	11	1 Gal.	Container	30" o.c.
FORCED WETLAND PERENNIALS						
AC	Acorus calamus	Sweet Flag	270	2.5"	Container	7" O.C.
AP	Alisma plantago aquatica	Water Plantain	135	2.5"	Container	7" O.C.
IV	Iris versicolor	Blue Flag Iris	135	2.5"	Container	7" O.C.
PC	Pontederia cordata	Pickeral Weed	186	2.5"	Container	7" O.C.
SL	Sagataria latifolia	Arrowhead	180	2.5"	Container	7" O.C.
SA	Scirpus acutus	Hardstem Bulrush	45	2.5"	Container	7" O.C.