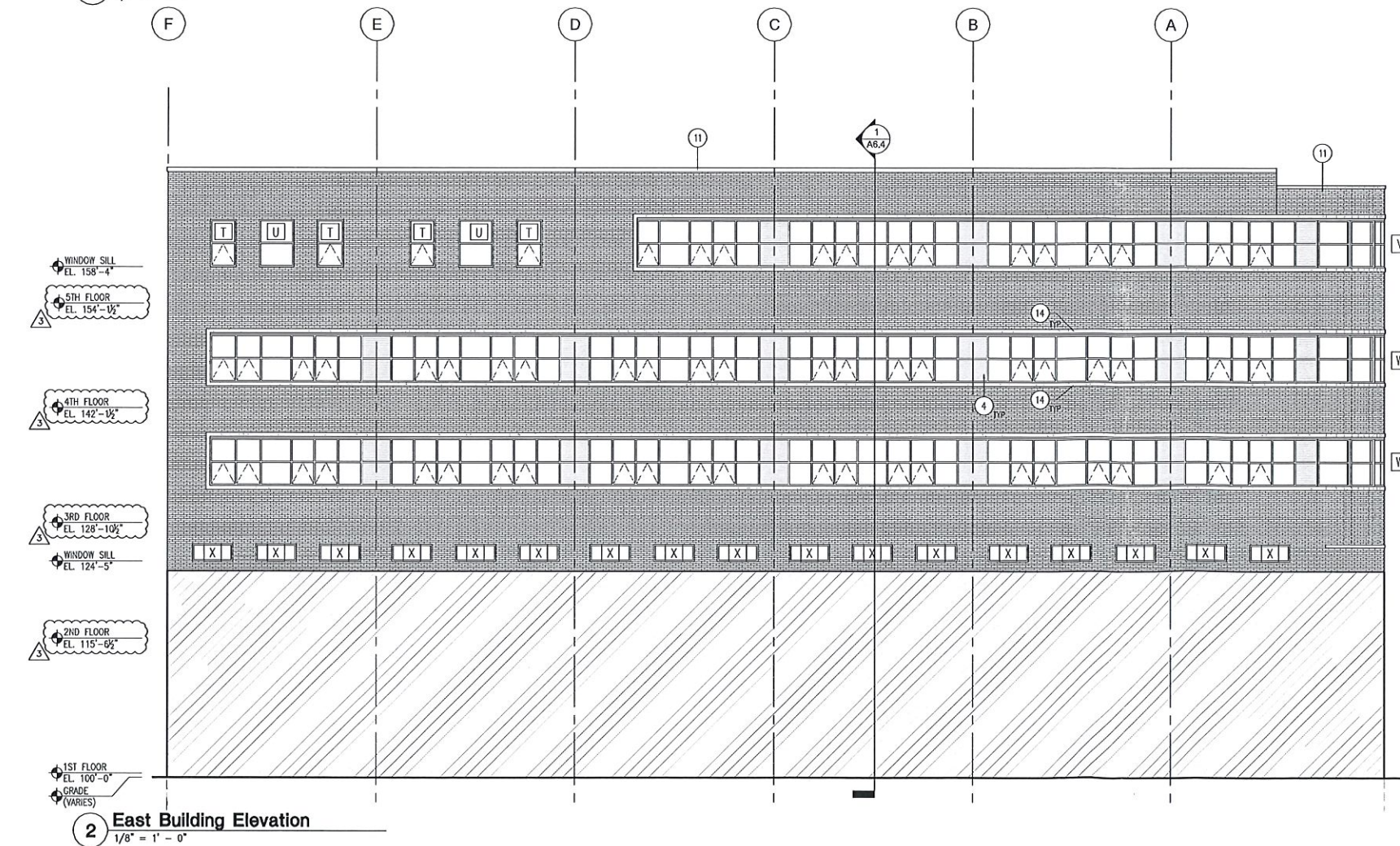




1 South Building Elevation

1/8" = 1' - 0"



2 East Building Elevation

1/8" = 1' - 0"

#### ELEVATION KEY NOTES:

##### SCOPE PACKAGE 2 - SHELL & CORE RECONSTRUCTION

- 1 PAINTED BRICK - COLOR T.B.D.
- 2 NEW BRONZE ANODIZED STOREFRONT GLAZING SYSTEM.
- 3 OPERABLE AWING-STYLE STOREFRONT WINDOW COMPONENT.
- 4 ALUMINUM SPANDREL PANEL TO MATCH ALUMINUM STOREFRONT.
- 5 NEW PREFINISHED ALUMINUM GUTTER/DOWNSPOUT.
- 6 NEW MASONRY WALL INFILL - REUSE EXISTING MASONRY AS NECESSARY.
- 7 NEW BUILDING EXPANSION JOINT - SEE STRUCTURAL DRAWINGS.
- 8 NEW ACCESSIBLE ENTRANCE.
- 9 BUILDING NOT IN PROJECT SCOPE.
- 10 EXTERIOR LIGHTING FIXTURE - SEE LIGHTING PLANS.
- 11 NEW PREFIN. ALUM. COPING & MASONRY PARAPET TO MATCH EXISTING DESIGN. SEE STRUCT. DRAWINGS.
- 12 INTEGRALLY COLORED EIFS SYSTEM ON METAL FURRING OVER EXISTING MASONRY - COLOR T.B.D.
- 13 NEW EXTERIOR DOOR TO FUTURE SKY BRIDGE FROM FUTURE PARKING STRUCTURE.
- 14 NEW CONCRETE HEAD/SILL BANDING AT RIBBON WINDOWS.
- 15 NEW 48" X 48" MECH. LOUVERS. SEE MECH. DRAWINGS.
- 16 NEW 36"n x 6"dia CONCRETE FILLED BOLLARD PAINTED SAFETY YELLOW.

**zimmerman**  
ARCHITECTURAL STUDIOS, INC.

2122 W Mount Vernon Ave | Milwaukee, WI 53233 | zstudios.com  
TELEPHONE [414] 476.9500  
FACSIMILE [414] 476.9582



Project:  
The Artistry at Walker's Point

Location:  
133 W. Pittsburgh Ave.  
Milwaukee, WI 53204

#### BID PACKAGE #2

Sheet:  
Building Elevations

Scale:

#### Revisions:

No.	Date	Description
6/7/16	BID SET #2	
6/28/16	ADDENDUM #1	
8/10/16	CONSTRUCTION BULLETIN #1	
10/10/16	CONSTRUCTION BULLETIN #2	

Date:

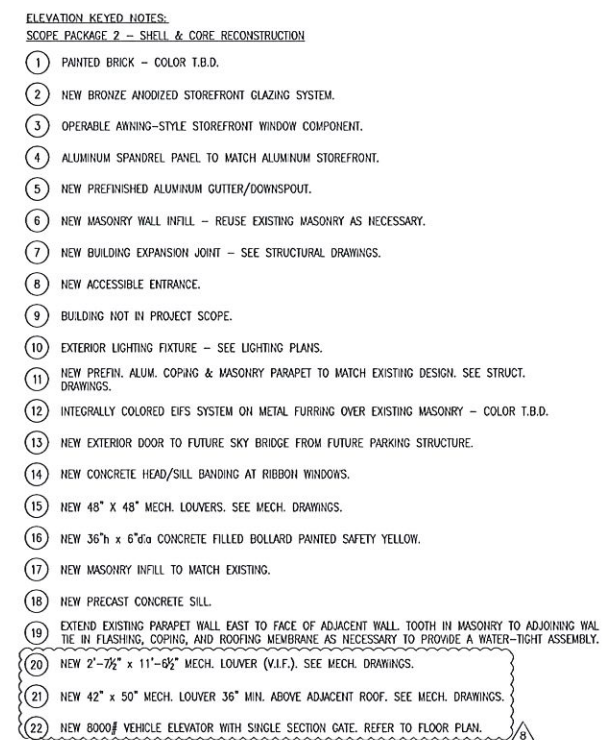
6/7/16

Project No.:  
160055.00

Sheet No.:

A4.1 original









Project:  
The Artistry at Walker's  
Point

Location:  
133 W. Pittsburgh Ave.  
Milwaukee, WI 53204

BID PACKAGE #2

Sheet:  
Building Elevations

Scale:

Revisions:		
No.	Date:	Description:
	6/7/16	BID SET #2
	6/28/16	ADDENDUM #1
	8/19/16	CONSTRUCTION BULLETIN #1
	10/10/16	CONSTRUCTION BULLETIN #2
	10/24/16	RFI 001
	11/04/16	RFI 002
	1/17/17	CONSTRUCTION BULLETIN #4

Date: \_\_\_\_\_

6/7/16

Project No.:

160055.00

Sheet No.:

A4.1 proposed