

SIGN SPECIFICATIONS

[A] - ILLUMINATED LETTERS

Lighting: White LED
Voltage: [TBD]
Description: Back-lit; fabricated aluminum
Face Color: Paint black
Return Color: Same as face
Installation: Stool off 2" from pan with spacers

[B] - MOUNTING PAN

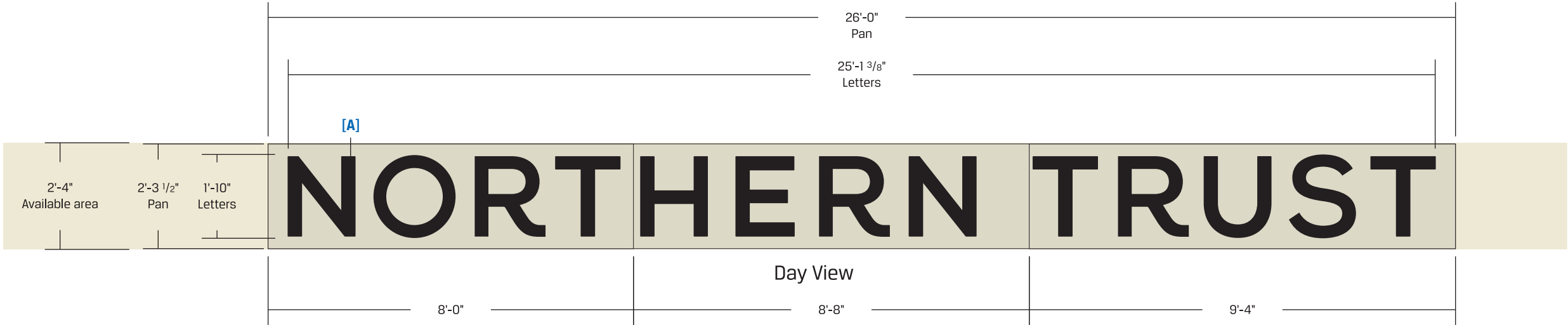
Description: Fabricated aluminum
Color: Paint to match building facade [TBD]



Existing conditions - NTS



Proposed signage (east elevation) - NTS



***Note: Poblocki Sign Company LLC is responsible for restoring any existing penetrations as close as possible to original wall condition**



922 S. 70th St., West Allis, WI 53214
414.453.4010 • www.poblocki.com

This document is owned by and the information contained in it is proprietary to Poblocki Sign Company, LLC. By receipt hereof, the holder agrees not to use the information, disclose it to any third party or reproduce this document without the prior written consent of Poblocki Sign Company, LLC. Holder also agrees to immediately return this document upon request by Poblocki Sign Company, LLC.
This document represents only an approximation of material colors specified. Actual product colors may vary from this print or digital image.

Project

Northern Trust

526 E Wisconsin
Milwaukee, WI

Scale: 3/8"=1'-0"
Original Page Size: 11" x 17"

Notes

.

Revisions

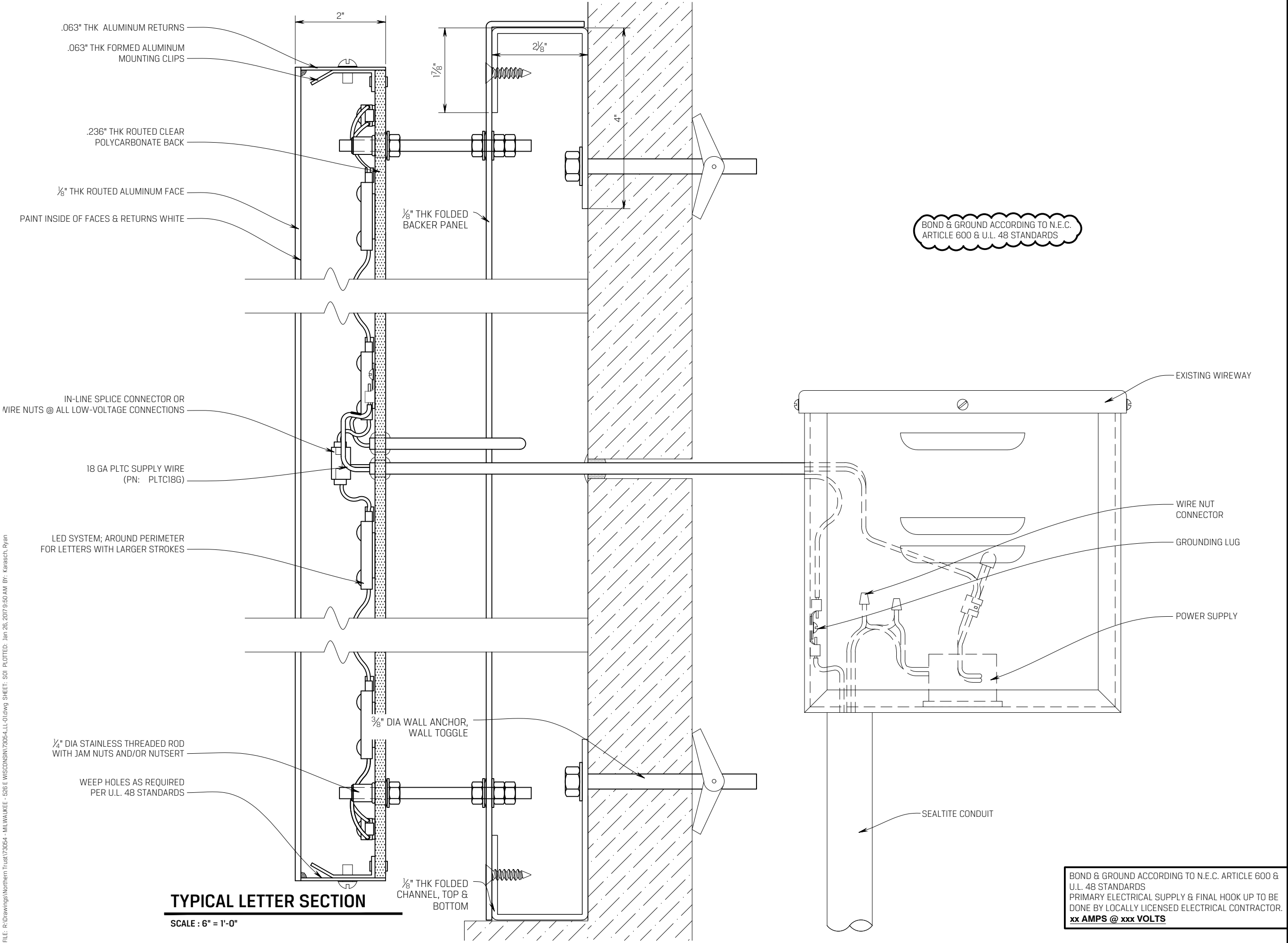
REV	DESCRIPTION	BY	DATE
01	Update	JJ	12/06/16
02	mounting pan	RAK	12.9.16
03	pan size, note	RAK	1.26.17

Rep.: Chuck Admundson
Drawn By: Ryan Karasch Orig. Date: 7.19.16

Sign Loc.No. East

LL-01
Lit Letters
Sign. Type

FILE: R:\Drawings\Northern Trust\73054 - MILWAUKEE - 526 E WISCONSIN\73054-LL-01.dwg SHEET: S01 PLOTTED: Jan 26, 2017 9:50 AM BY: Karasch, Ryan



TYPICAL LETTER SECTION

SCALE : 6" = 1'-0"



922 S. 70th St., West Allis, WI 53214
414.453.4010 • www.poblocki.com

This document is owned by and the information contained in it is proprietary to Poblocki Sign Company, LLC. By receipt hereof, the holder agrees not to use the information, disclose it to any third party or reproduce this document without the prior written consent of Poblocki Sign Company, LLC. Holder also agrees to immediately return this document upon request by Poblocki Sign Company, LLC.

This document represents only an approximation of material colors specified. Actual product colors may vary from this print or digital image

Project
NORTHERN TRUST

526 E WISCONSIN AVE
MILWAUKEE, WI

Scale: **AS NOTED**
Original Page Size: **11" X 17"**

Notes

.

Revisions

REV	DESCRIPTION	BY	DATE
01	FACE-LIT->BACK-LIT	RAK	7.19.16
02	PAN MOUNT	RAK	12.9.16
03	PAN CONST	RAK	1.26.17

Rep.: **C AMUNDSEN** Orig. Date: **7.19.16**
Drawn By: **RYAN KARASCH**

Sign Loc. No. SOUTH & EAST

LL-01

LIT LETTERS
Sign Type

73054

OPP-Project-Job No.

S01

Sheet