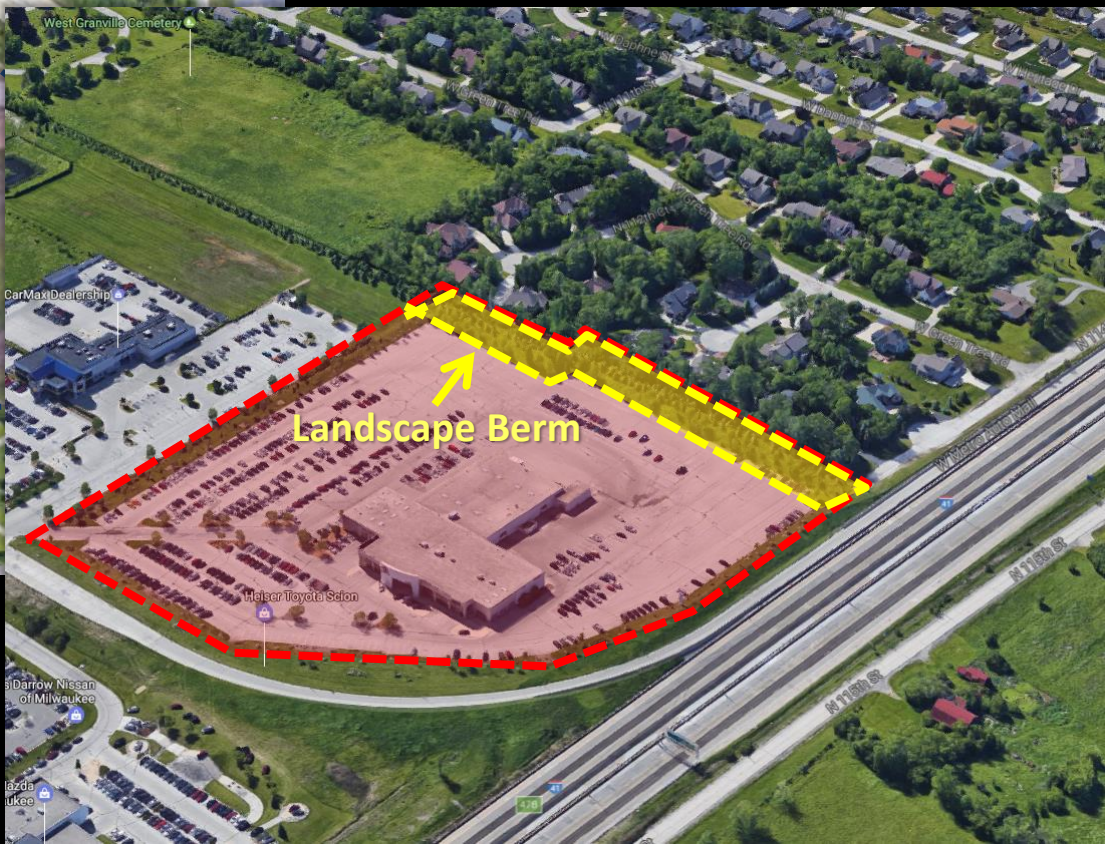


File No. 160693. Substitute resolution relating to a Minor Modification to the Detailed Planned Development known as Metro Center, Phase 5, for revisions to the landscape plan for Heiser Toyota located at 11301 West Metro Auto Mall, on the south side of West Metro Auto Mall, east of North 114th Street, in the 5th Aldermanic District.





## A wide-angle photograph of a modern car dealership building. The building is a long, single-story structure with a light gray facade and large glass windows. On the left side, the Toyota logo and the word "TOYOTA" are visible. In the center, the name "WEISER" is displayed above a set of glass doors. On the right side, the "SCION" logo is visible above another set of glass doors. A large parking lot in front of the building is filled with various cars, including sedans and SUVs. The sky is overcast with heavy, gray clouds. In the foreground, there is a grassy area with some small, bare trees and shrubs. The entire image is framed by a thick green border.

A wide-angle photograph of a Toyota dealership parking lot. Numerous cars are parked in rows. In the background, the dealership building is visible with the Toyota logo on its facade. The sky is overcast and grey.

A photograph showing a grassy area with a chain-link fence. In the foreground, there is a concrete barrier. In the background, there are trees and a building. Two blue arrows point to a small orange object on the fence.





File No. 160693. Existing Landscaping Photos.





File No. 160693. Existing Landscaping Photos.





File No. 160693. Proposed Changes to Landscape Plan.

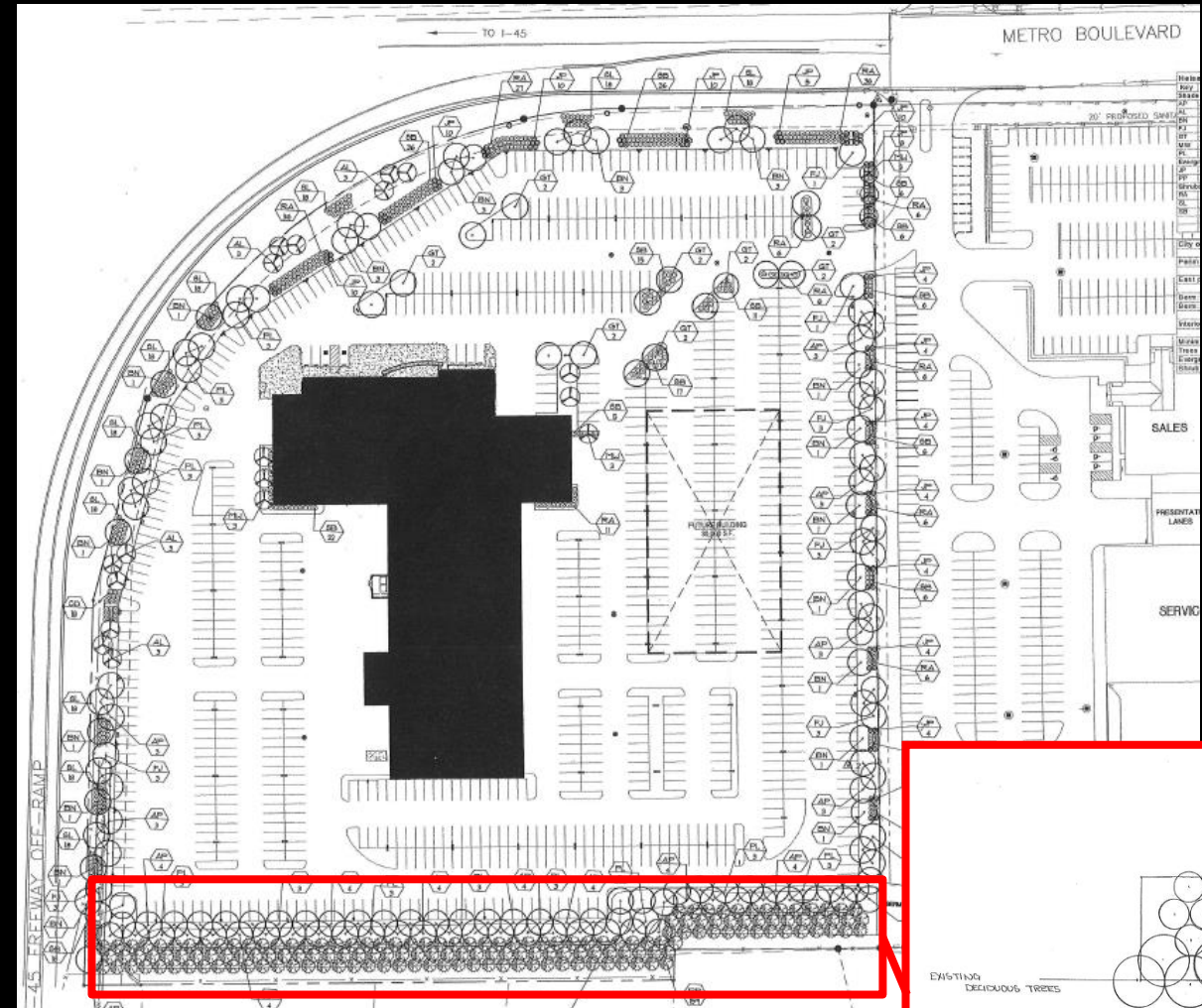


Photo © John M. Hagstrom

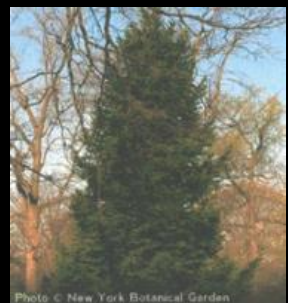
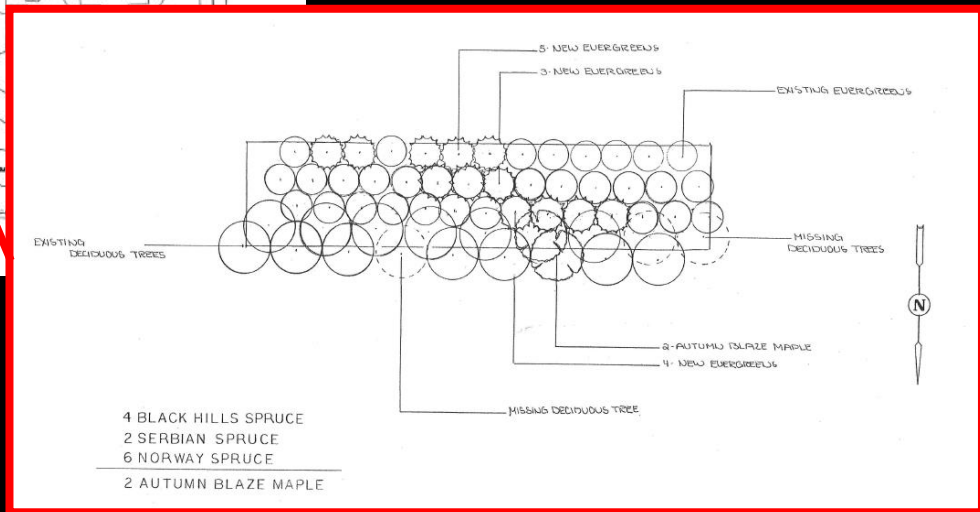


Photo © New York Botanical Garden



Landscape Berm






### Gro-Low Fragrant Sumac

*Rhus aromatica* 'Gro-Low'

Item #6989    USDA Hardiness Zone: 4 - 9



Availability

