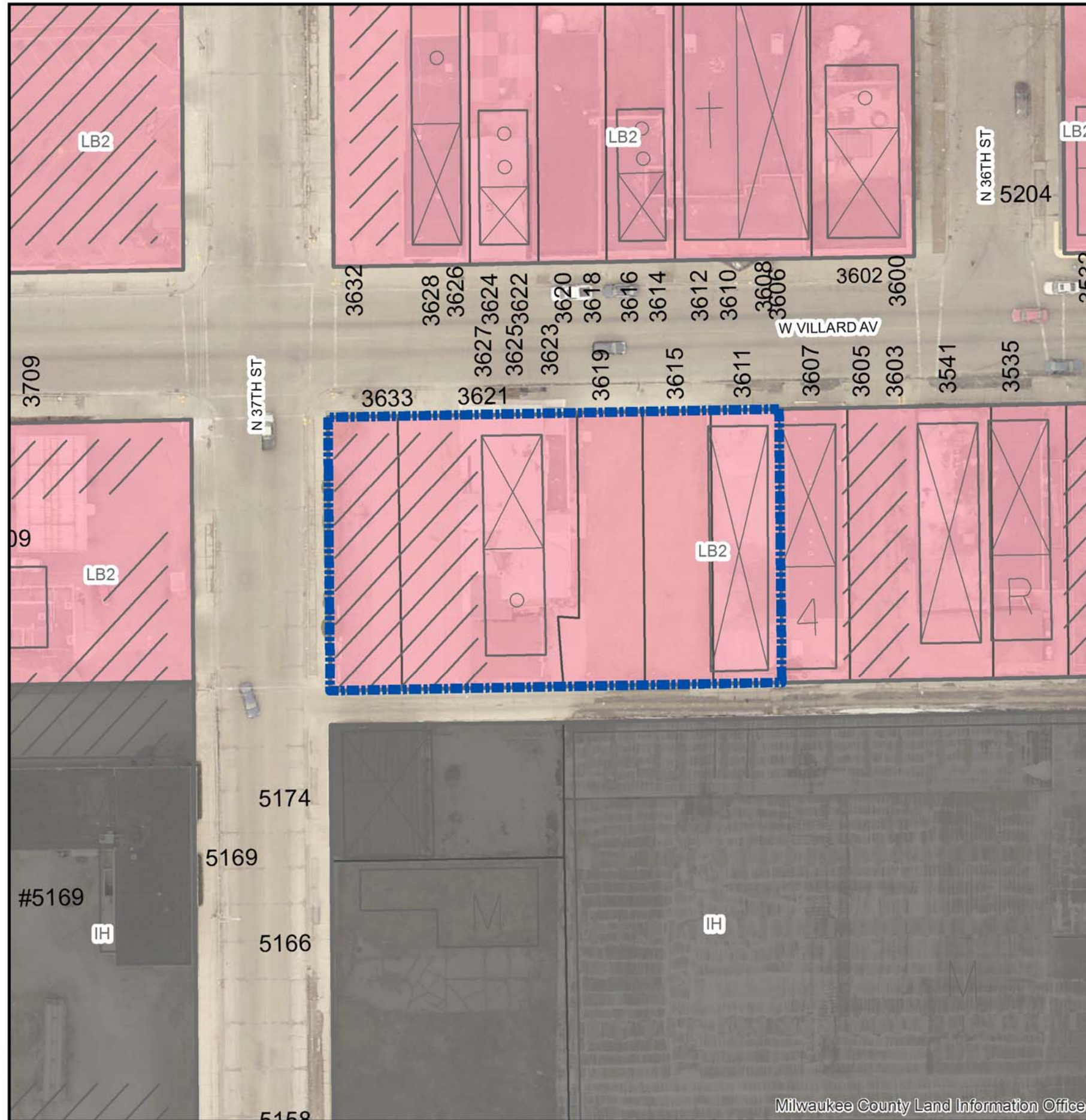


File No. 160917
 LB2 to DPD
 3611 - 3633 W. Villard Ave.
 December 2016



Legend

-  Zoning Change Boundary
- Zoning**
-  Commercial - Commercial Service
-  Commercial - Neighborhood Shopping
-  Commercial - Local Business
-  Commercial - Regional Business
-  Downtown
-  Industrial - Office
-  Industrial - Light
-  Industrial - Mixed
-  Industrial - Heavy
-  Residential - Single Family
-  Residential - Two Family
-  Residential - Multi-Family
-  Residential - Residence and Office
-  Special - Parks
-  Special - Institutional
-  Special - Planned Development
-  Special - Redevelopment District

