



Certificate of Appropriateness

Milwaukee Historic Preservation Commission/200 E. Wells Street/Milwaukee, WI 53202/phone 414-286-5712/fax 414-286-3004

Property 1037 W. JUNEAU AV.
Description of work Contractor to install one aluminum sign cabinet with vinyl graphics and neon design over main entrance on Juneau Avenue. Diameter of sign shall be four feet. Details in attached drawings.
Date issued 12/9/2016 PTS ID 114182 COA neon sign for new business

In accordance with the provisions of Section 320-21 (11) and (12) of the Milwaukee Code of Ordinances, the Milwaukee Historic Preservation Commission has issued a certificate of appropriateness for the work listed above. The work was found to be consistent with preservation guidelines. The following conditions apply to this certificate of appropriateness:

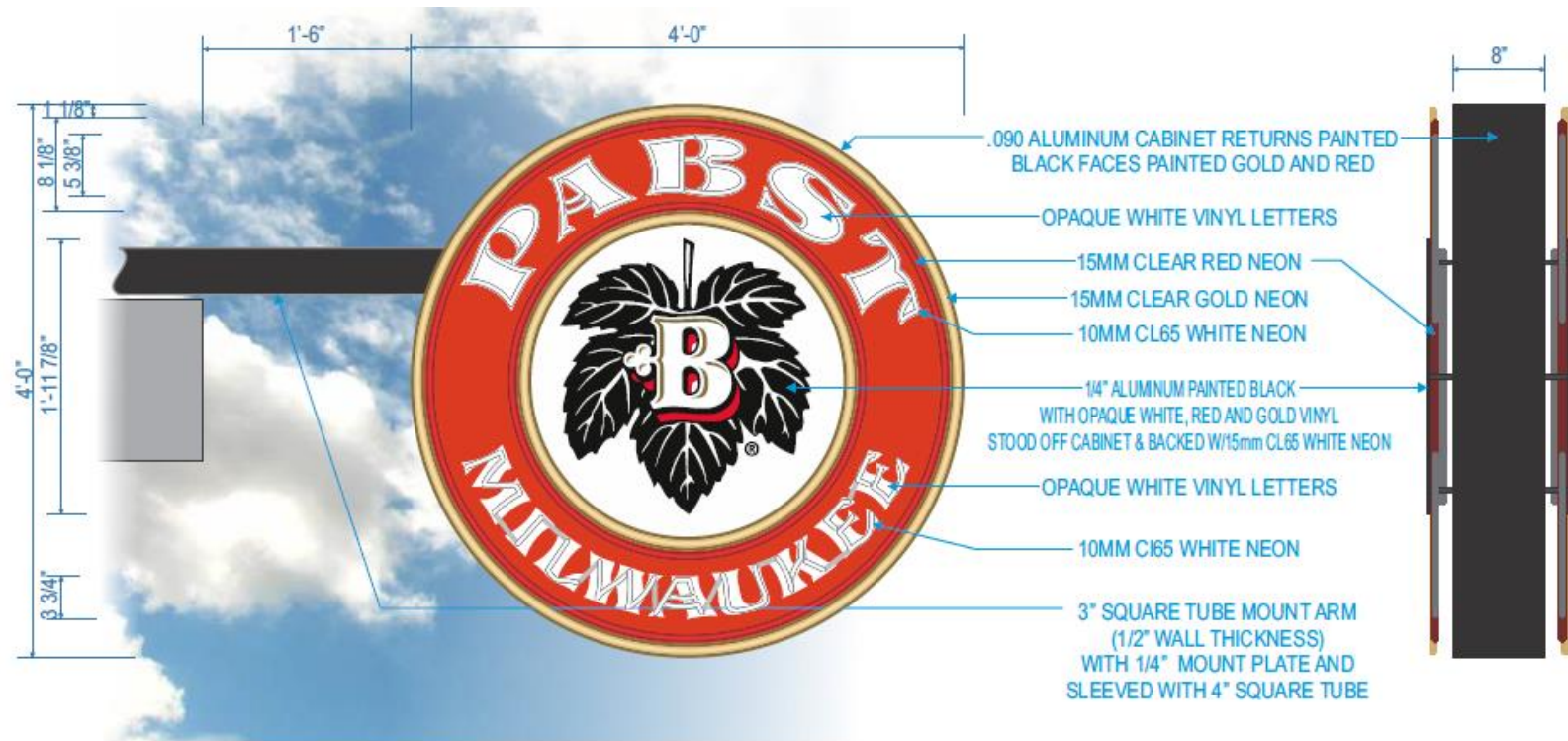
Design is approved exactly as in supplied drawing with no deviation. The minimally invasive mounting technique shown must also be used as shown.

All work must be done in a craftsman-like manner, and must be completed within one year of the date this certificate was issued. Staff must approve any changes or additions to this certificate before work begins. Work that is not completed in accordance with this certificate may be subject to correction orders or citations. If you require technical assistance, please contact Tim Askin of the Historic Preservation staff as follows: Phone: (414) 286-5712 Fax: (414) 286-3004 E-mail: tim.askin@milwaukee.gov.

If permits are required, you are responsible for obtaining them from the Milwaukee Development Center. If you have questions about permit requirements, please consult the Development Center's web site, www.milwaukee.gov/build, or call (414) 286-8210.

City of Milwaukee Historic Preservation Staff

Copies to: Development Center, Ald. Robert Bauman, Contractor, Inspector Dave Pedersen (286-2540)



SIGN 2: PROJECTING SIGN

SCALE: 1" = 1'-0"

MANUFACTURE ONE (1) ILLUMINATED, DOUBLE SIDED PROJECTING SIGN



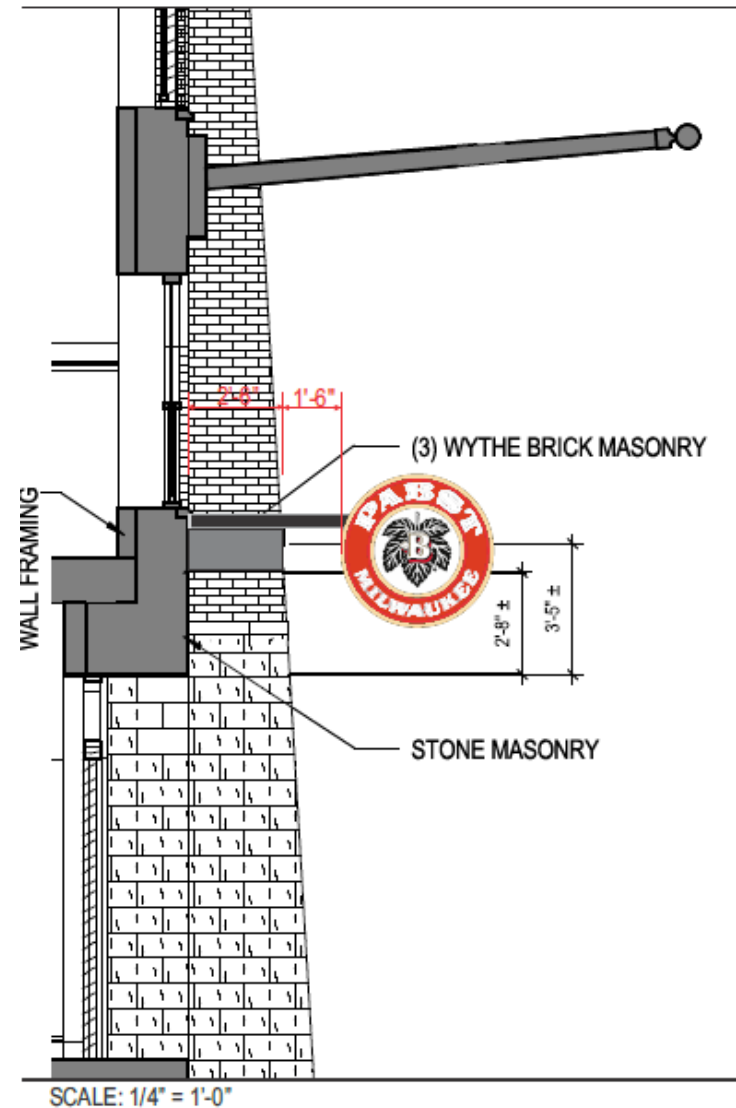
Neon Key

- 15mm Clear Red
Approx. L.F.=44 (22 per side)
- 15mm Clear Gold
Approx. L.F.=44 (22 per side)
- 10mm CL65 White
Approx. L.F.= 54 (27 per side)
- 15mm CL65 White
Approx. L.F.=24 (12 per side)

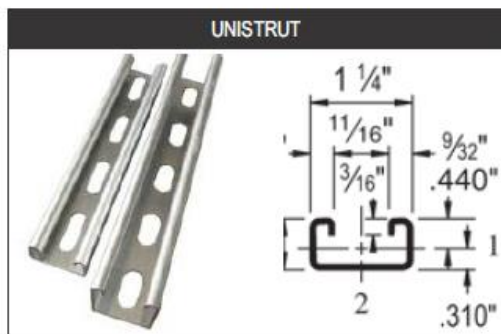
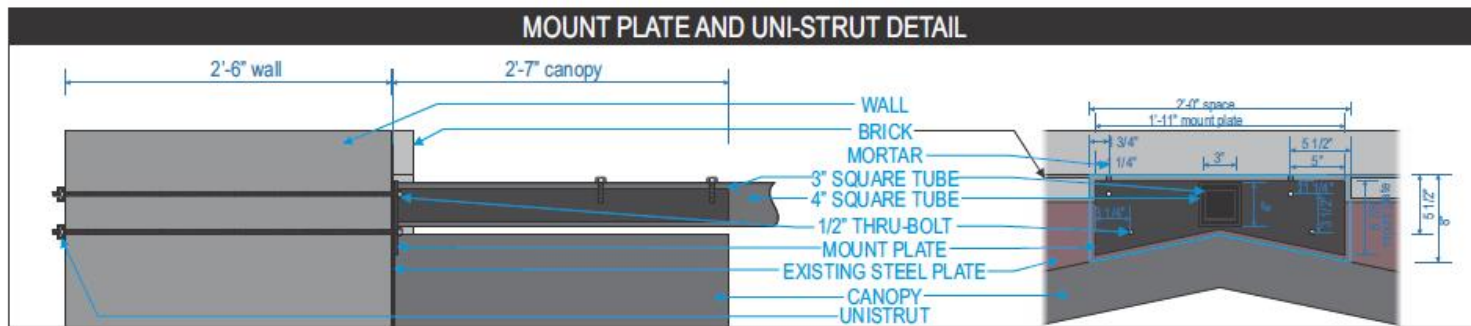




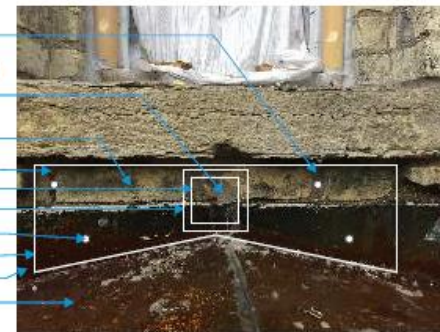
Mockup of Mounting Location



Installation in Section, disregard written scale



MORTAR
POWER THRU EXISTING
MORTAR PATCH
BRICK
MORTAR
3" SQUARE TUBE
4" SQUARE TUBE
1/2" THRU-BOLT
MOUNT PLATE
EXISTING STEEL PLATE
CANOPY



BACK OF WALL



Installation Details