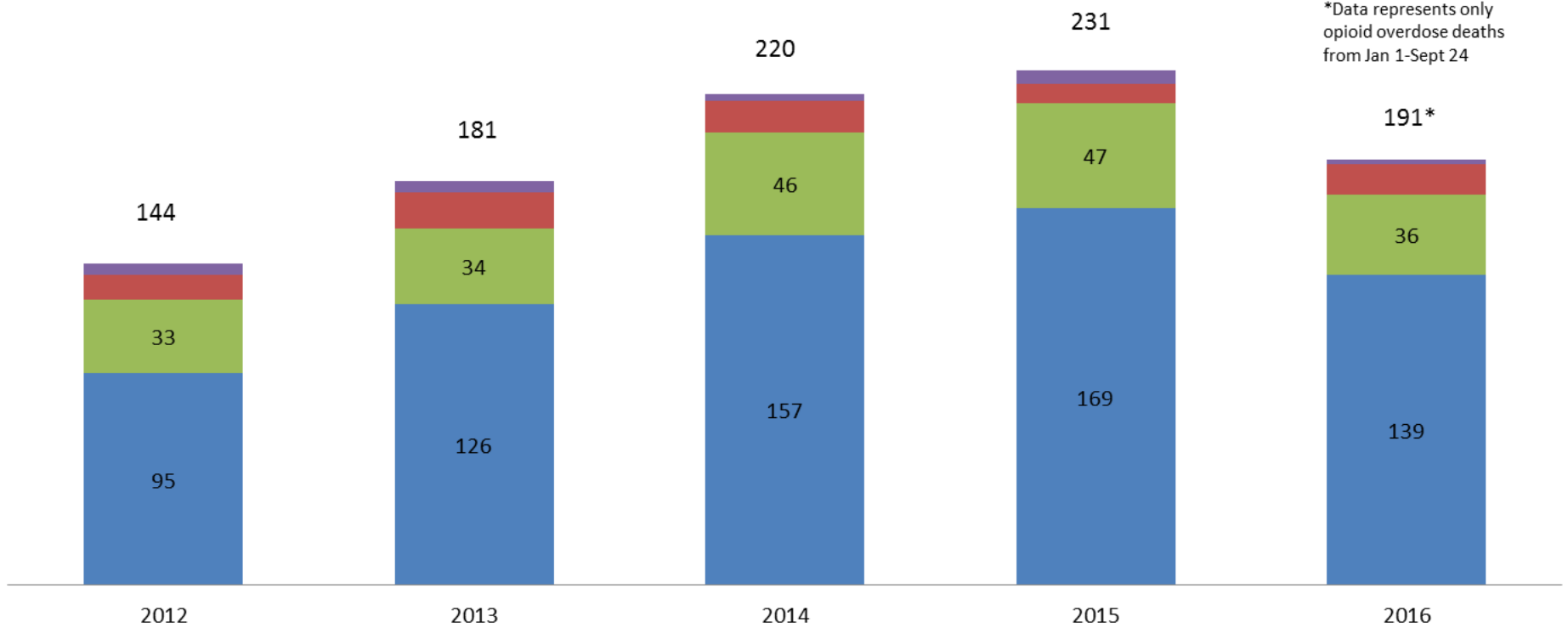


Opioid-Related Overdose Deaths in Milwaukee County January 1, 2012 – September 24, 2016

Opioid Overdose Deaths by Year and Race/Ethnicity

January, 2012 – September, 2016

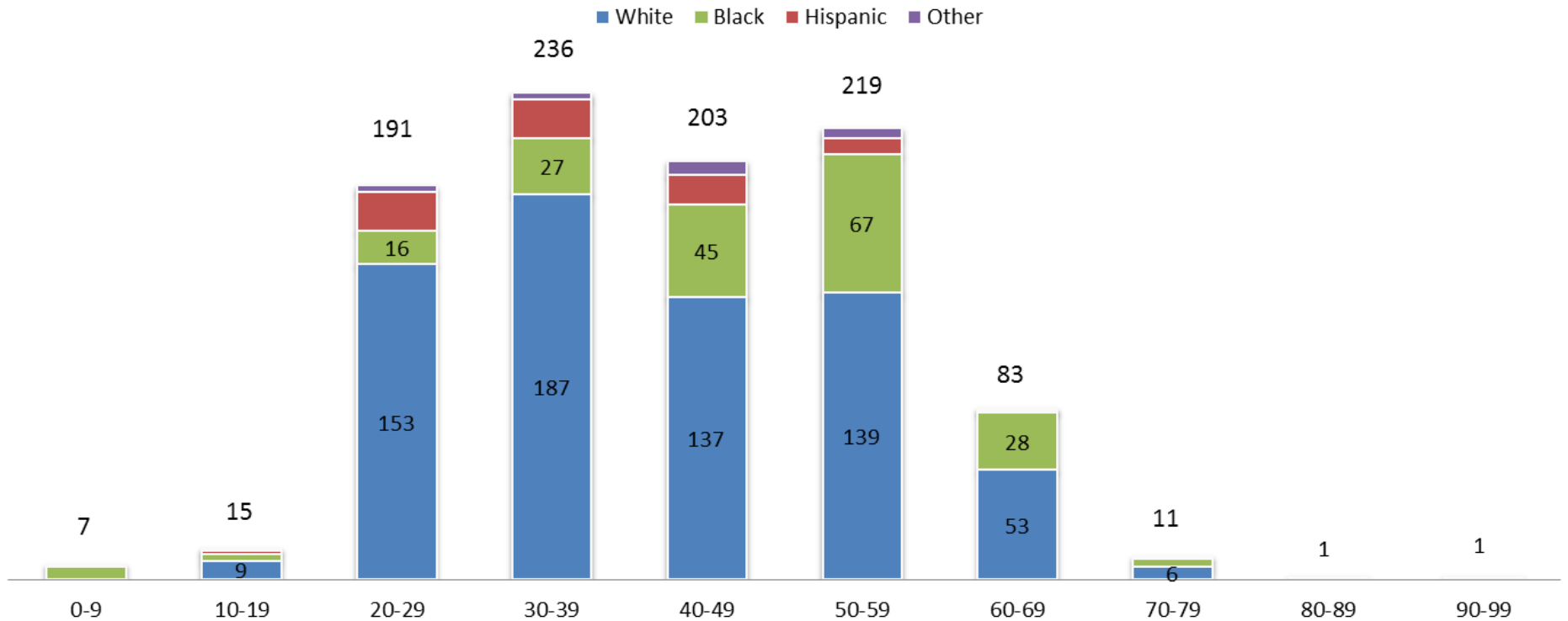
■ White ■ Black ■ Hispanic ■ Other



*Data represents only opioid overdose deaths from Jan 1-Sept 24

Opioid Overdose Deaths by Age Range and Race/Ethnicity

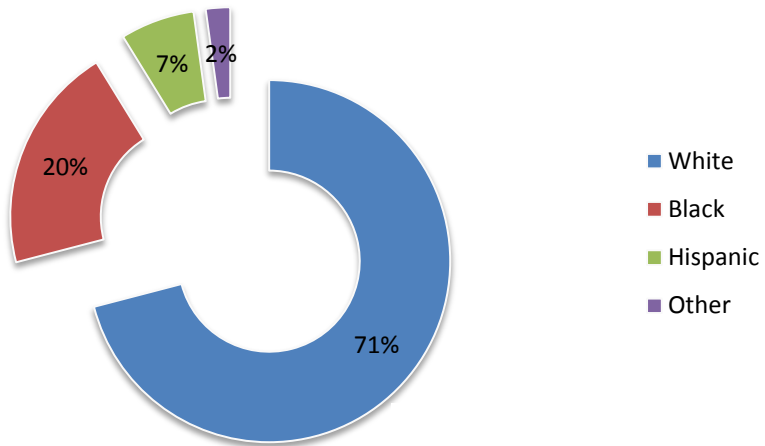
January, 2012 – September, 2016



Almost 50% of all opioid-related overdose deaths occurred among white victims between the ages of 20-49. While the distribution of white overdose deaths mirrors the overall distribution, black overdose deaths skew older with 45% occurring between the ages of 40-59.

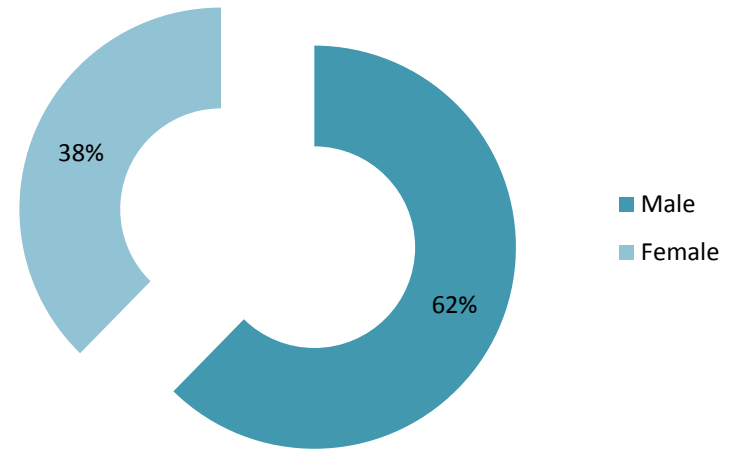
Opioid Overdose Deaths by Race/Ethnicity

January, 2012 – September, 2016



Opioid Overdose Deaths by Sex

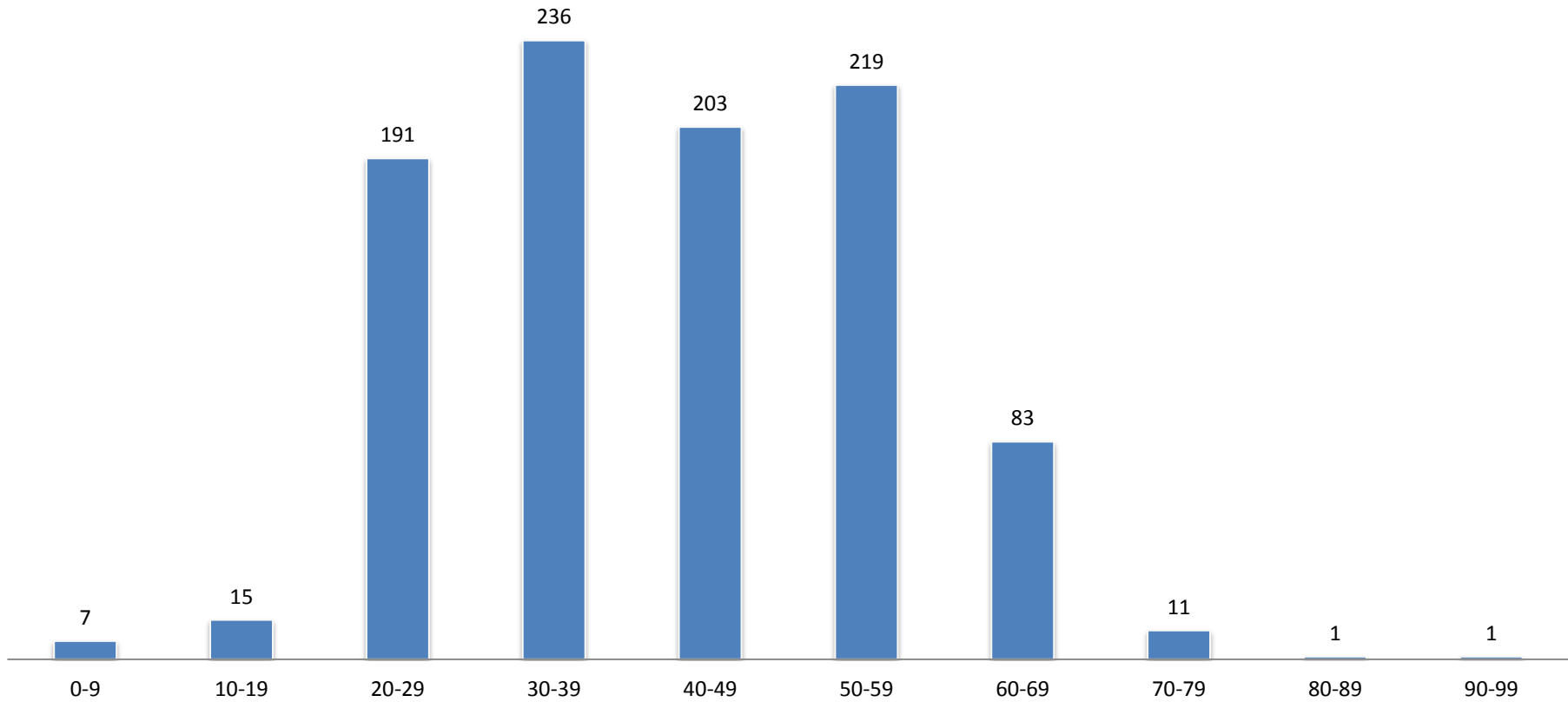
January, 2012 – September, 2016



Of the 967 opioid-related overdose deaths between January 1, 2012 and September 24, 2016, 71% were white and 62% were male.

Opioid Overdose Deaths by Age Range

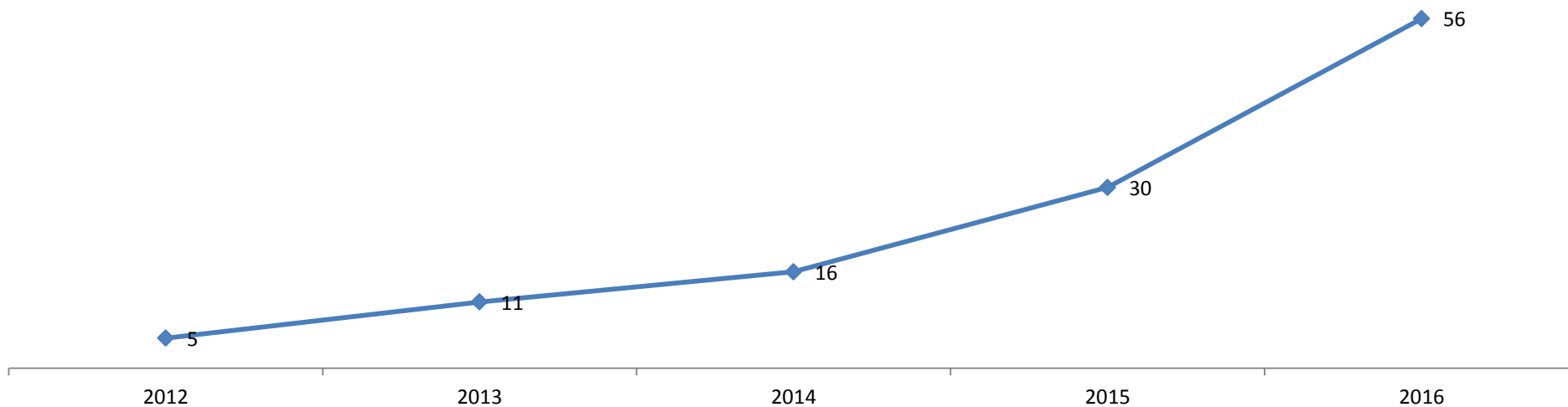
January, 2012- September, 2016



Nearly half, 45%, of opioid-related overdose deaths occur between 30-49 years of age.

Fentanyl-Related Overdose Deaths

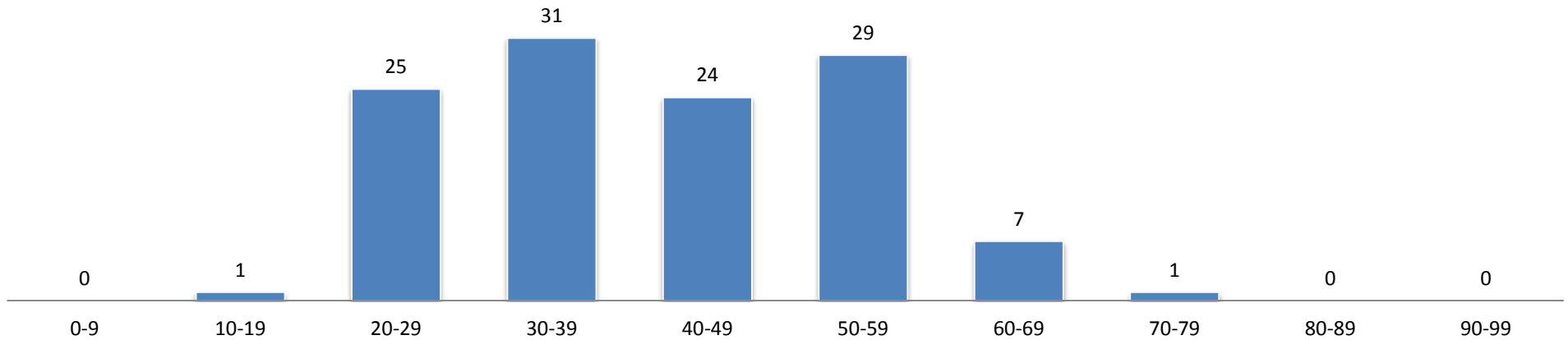
January, 2012-September, 2016



Of the 191 opioid-related overdose deaths between January 1, 2016 and September 24, 2016, 29% involved the drug fentanyl. In 2015, only 13% of opioid-related overdose deaths involved fentanyl; the rate of overdose deaths involving fentanyl for the first nine months of 2016 alone already surpasses the rate for all of 2015.

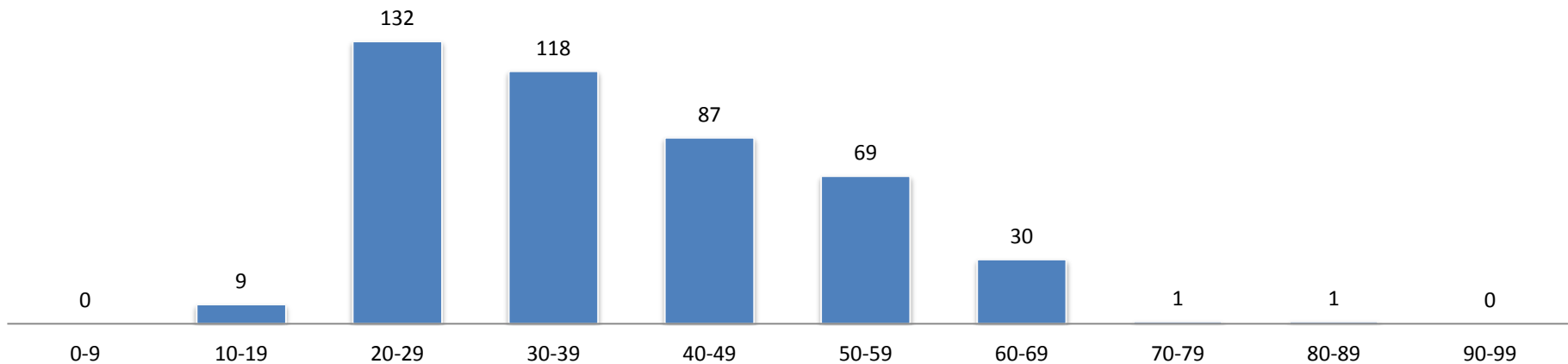
Fentanyl-Related Overdose Death by Age Group

January, 2012-September, 2016



Heroin-Related Overdose Deaths by Age Group

January 2012-September 2016



Fentanyl-related deaths stay relatively steady from ages 20-59, while heroin-related deaths affect younger groups, with 20-29 year olds having the highest incidence.

Opioid-Related Overdose Deaths in Milwaukee County

	All Opioid Overdoses 2012-2016		2012		2013		2014		2015		2016	
Total	967		144		181		220		231		191	
	Frequency	Percent	Frequency	Percent	Frequency	Percent	Frequency	Percent	Frequency	Percent	Frequency	Percent
Sex												
Male	602	62%	87	60%	102	56%	133	60%	149	65%	131	69%
Female	364	38%	57	40%	79	44%	87	40%	81	35%	60	31%
Age Range												
under 9	7	1%	0	0%	2	1%	0	0%	1	0%	4	2%
10-19	15	2%	2	1%	5	3%	1	0%	4	2%	3	2%
20-29	191	20%	23	16%	35	19%	50	23%	45	19%	38	20%
30-39	236	24%	36	25%	32	18%	48	22%	64	28%	56	29%
40-49	203	21%	30	21%	53	29%	44	20%	46	20%	30	16%
50-59	219	23%	42	29%	42	23%	49	22%	42	18%	44	23%
60-69	83	9%	9	6%	9	5%	24	11%	26	11%	15	8%
70-79	11	1%	2	1%	3	2%	3	1%	3	1%	0	0%
80-89	1	0%	0	0%	0	0%	1	0%	0	0%	0	0%
90-99	1	0%	0	0%	0	0%	0	0%	0	0%	1	1%
Race/Ethnicity												
White	686	71%	95	66%	126	70%	157	71%	169	73%	139	73%
Black	196	20%	33	23%	34	19%	46	21%	47	20%	36	19%
Hispanic	64	7%	11	8%	16	9%	14	6%	9	4%	14	7%
Other	18	2%	5	3%	5	3%	3	1%	5	2%	2	1%
Drug Type*												
Heroin	447	46%	53	37%	69	38%	116	53%	110	48%	99	52%
Oxycodone	305	32%	60	42%	64	35%	82	37%	59	26%	40	21%
Methadone	132	14%	26	18%	26	14%	23	10%	39	17%	18	10%
Morphine	159	16%	24	16%	37	20%	31	14%	48	21%	19	10%
Fentanyl	118	12%	5	3%	11	6%	16	7%	30	13%	56	29%

Not mutually exclusive

**Heroin metabolizes to 6-monoacetylmorphine and is detectable in the blood for up to two hours in a living person. 6-monoacetylmorphine is then metabolized to morphine. When 6-monoacetylmorphine is found on a toxicology screen, the Medical Examiner can identify heroin as the cause of the overdose. However, if 6-monoacetylmorphine is not detected, morphine is identified as the cause of death.

Opioid-Related Overdose Deaths in Milwaukee County

Death at Victim's Residence

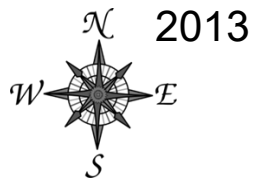
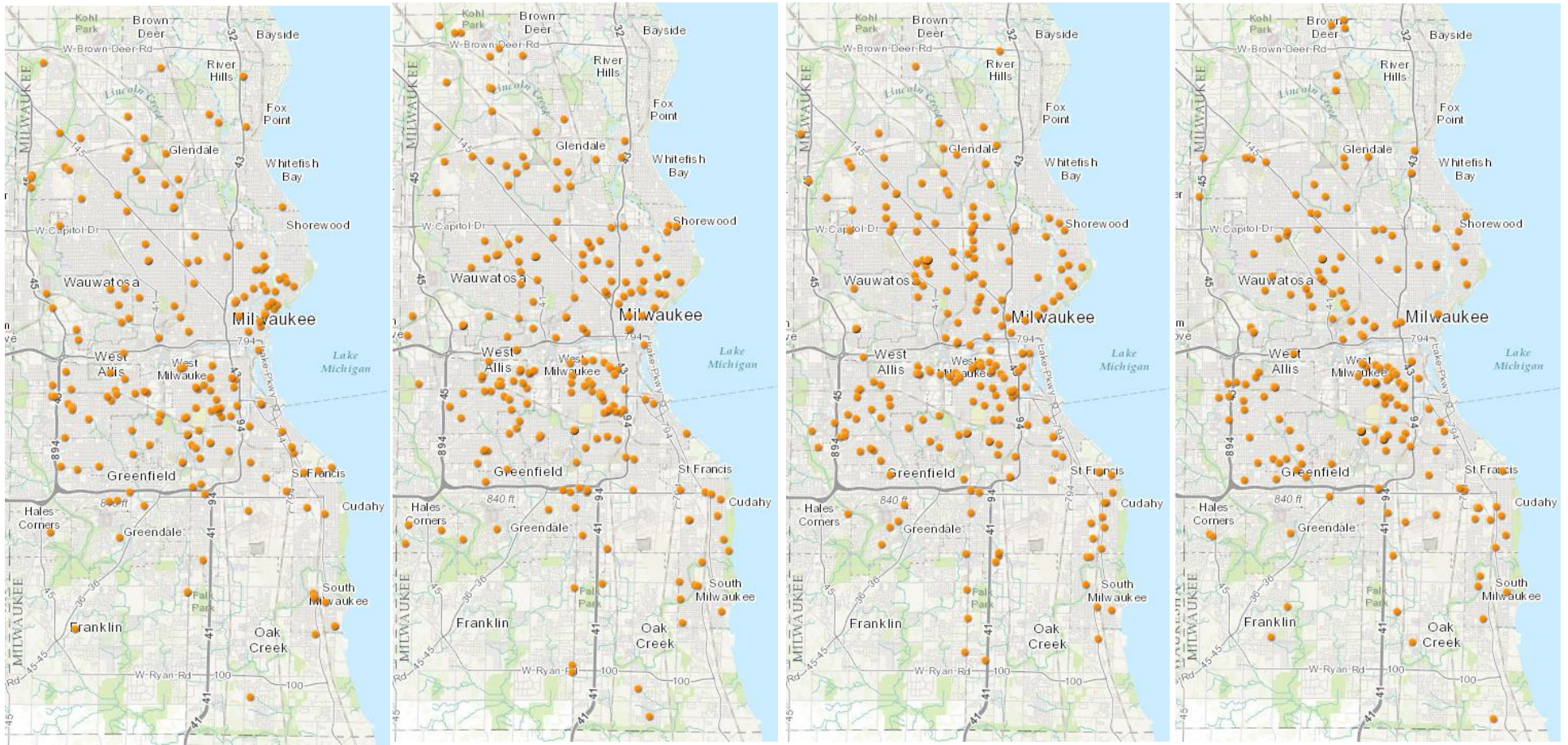
January, 2012-September, 2016

Year	2012	2013	2014	2015	2016*
Death at Residence	106	131	150	162	123
Total opioid deaths	144	181	220	231	191
Percent	74%	72%	68%	70%	64%

From January, 2012 through September, 2016, 69% of people who experienced a fatal opioid-related overdose died in their place of residence.

Location of Opioid-Related Overdose Death in Milwaukee County by Year

January 2013-September 2016



2013

2014

2015

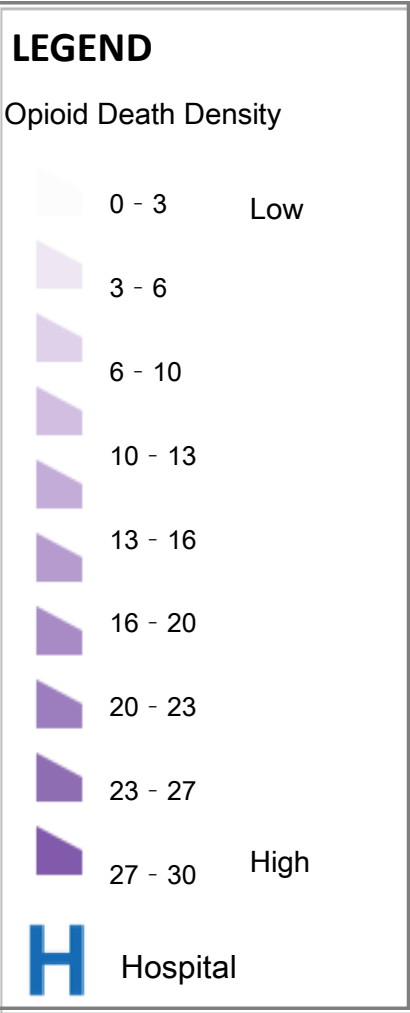
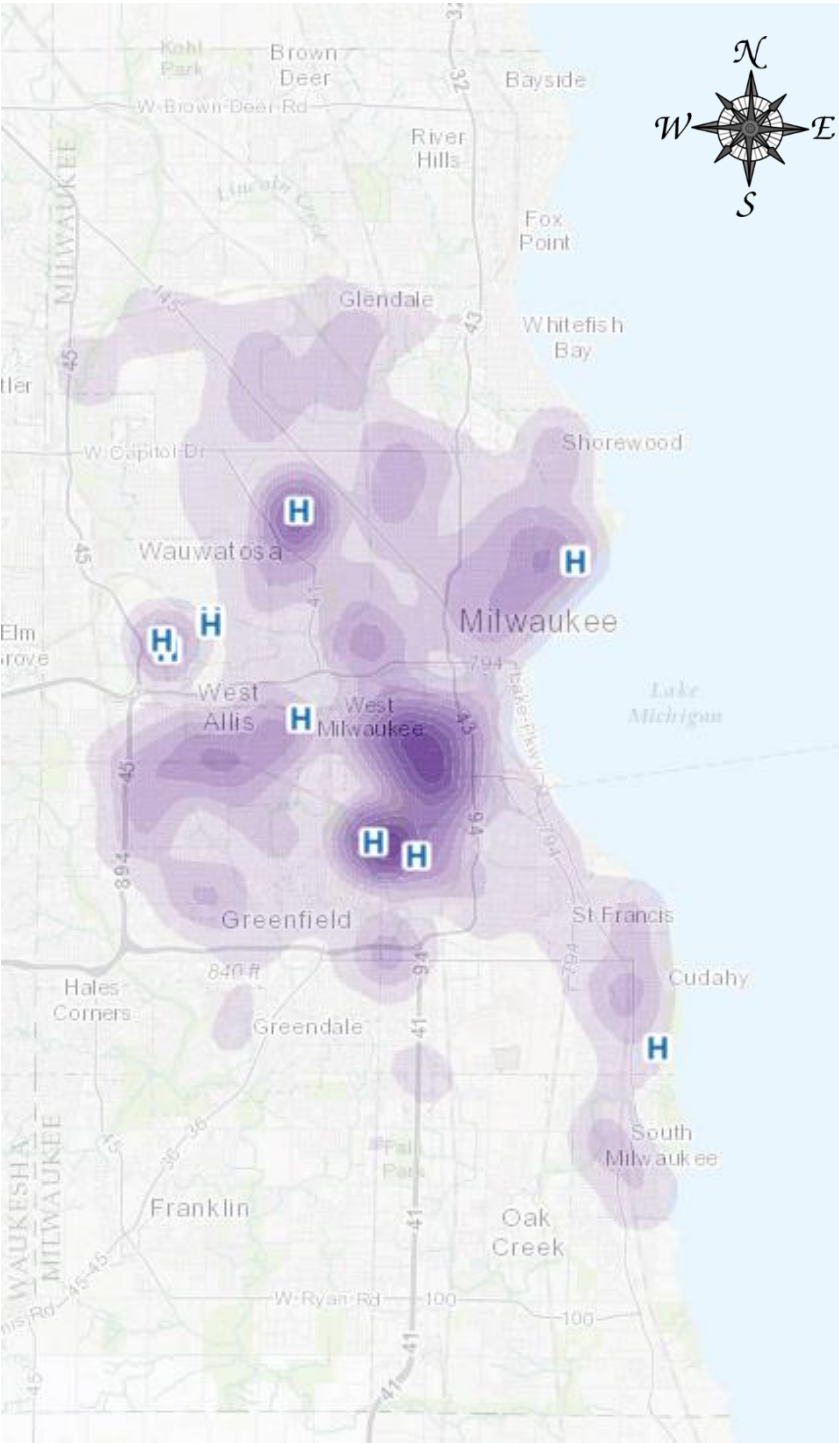
LEGEND

 Death

Data source: Milwaukee County Medical Examiner – Opioid-related overdose deaths January 1, 2012 - September 24, 2016.

Density of Opioid-Related Deaths in Milwaukee County

January 2012-September 2016



This map represents the location of overdose deaths including those who died at a hospital.

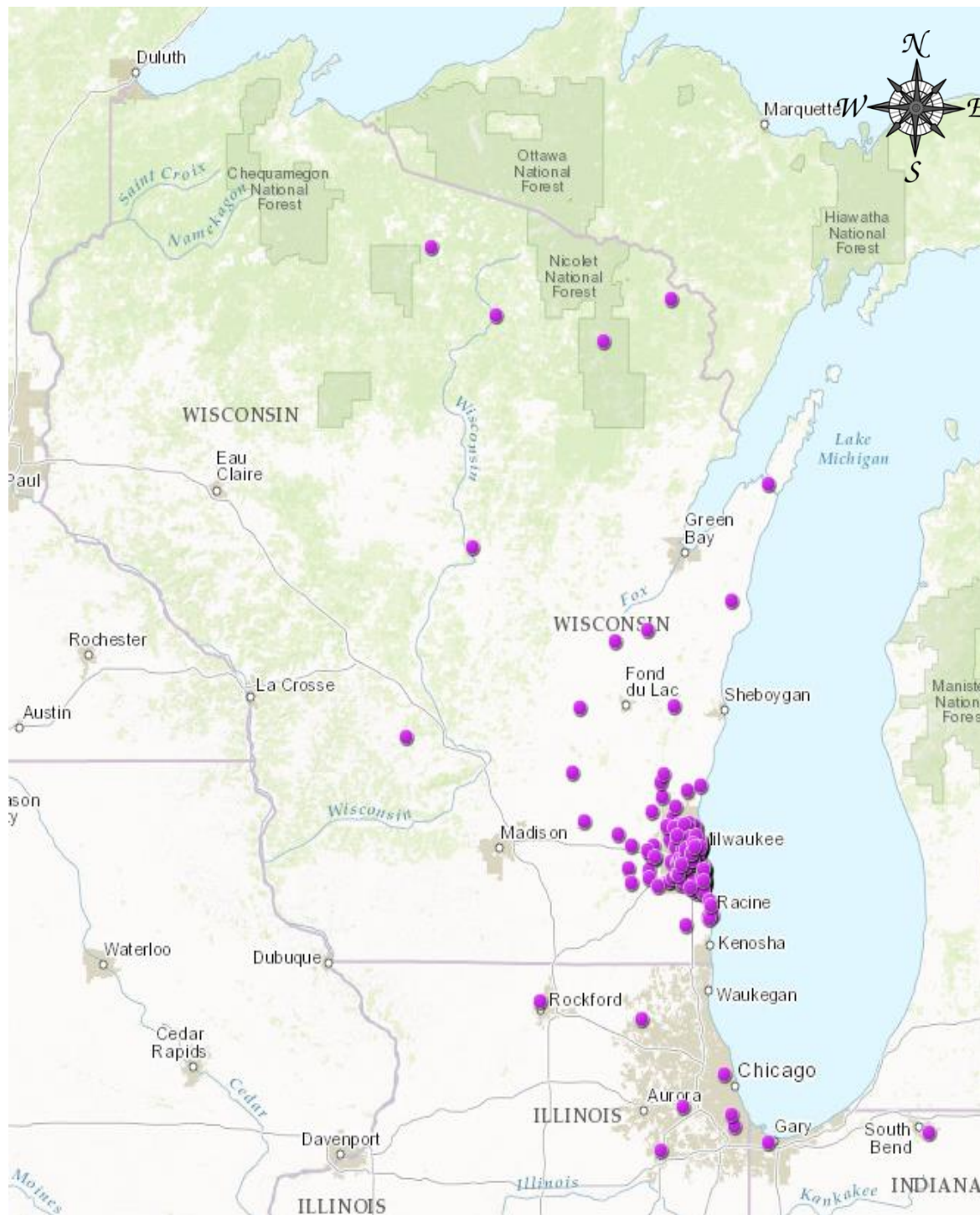
Data source: Milwaukee County Medical Examiner – Opioid-related overdose deaths January 1, 2012 - September 24, 2016.

Residence of Opioid-Related Overdose Victims Who Died in Milwaukee County

January 2012– September 2016

Approximately 60 opioid-related deaths in Milwaukee County had a residence outside of the county.

Additionally, four residences are not in this map's range.



Data source: Milwaukee County Medical Examiner – Opioid-related overdose deaths January 1, 2012 - September 24, 2016.