



Certificate of Appropriateness

Milwaukee Historic Preservation Commission/200 E. Wells Street/Milwaukee, WI 53202/phone 414-286-5712/fax 414-286-3004

Property 2525 N. SHERMAN BL. Sherman Boulevard Historic District Washington High School
Description of work MPS proposes to replace windows at Washington High School and to replace all of the existing doors, historic and non-historic. The former main entrance at Sherman Boulevard will be returned to a close approximation of its original appearance.
Date issued 12:00:00 AM PTS ID 100937 COA

In accordance with the provisions of Section 320-21 (11) and (12) of the Milwaukee Code of Ordinances, the Milwaukee Historic Preservation Commission has issued a certificate of appropriateness for the work listed above. The work was found to be consistent with preservation guidelines. The following conditions apply to this certificate of appropriateness:

MPS will restore/rehabilitate the 190 historic wood windows on the front elevation facing Sherman Boulevard.

Rear wood windows fronting on 44th Street will be replaced with new metal single hung windows. The windows will be double paned, have fixed muntins on both the interior and exterior of the sash and the spacers will be black. The new windows will have simulated divided lites to match the existing muntin pattern and the muntin profiles will match the existing historic windows. The laminated and tempered glass will be clear. THIS APPROVAL FOR METAL WINDOWS IS LIMITED TO THE CIRCUMSTANCES OF WASHINGTON HIGH SCHOOL. IT DOES NOT CONSTITUTE BLANKET APPROVAL OF METAL WINDOWS IN OTHER INSTALLATIONS.

The front entry will have smooth finish fiberglass doors. There will be glass in the upper portion of the doors, divided into nine lites. In the transom above this entrance the 1930 art glass memorial window will be restored and re-installed.

The remainder of the doors around the school will be replaced with new fiberglass doors that will have a textured, sparkly appearance. The doors will fall into several main types as shown attached.

All work must be done in a craftsman-like manner, and must be completed within one year of the date this certificate was issued. Staff must approve any changes or additions to this certificate before work begins. Work that is not completed in accordance with this certificate may be subject to correction orders or citations. If you require technical assistance, please contact of the Historic Preservation staff as follows:
Phone: (414) 286-5722 Fax: (414) 286-3004 E-mail: carlen.hatala@milwaukee.gov.

If permits are required, you are responsible for obtaining them from the Milwaukee Development Center. If you have questions about permit requirements, please consult the Development Center's web site, www.milwaukee.gov/build, or call (414) 286-8210.

A handwritten signature in black ink, reading "Carlen Hatala". The signature is written in a cursive, flowing style. The first name "Carlen" is followed by a diagonal slash, and then the last name "Hatala" is written.

City of Milwaukee Historic Preservation Staff

Copies to: Development Center, Ald. Russell Stamper II, Contractor, Inspector Bob McInnes (286-2518)



EAST ELEVATION

The 190 six-over six wood double hung windows at the front / Sherman Boulevard façade will be restored/repaired.



This is the rear or North 44th Street elevation. The original wood windows will be replaced with metal windows.



This is a close up of an original sash. New metal replacement must match this muntin profile, as well as dimensions of rails and stiles.



The new replacement windows must match exterior muntin profiles as well.

Attachment B



Series 601 Single Hung • Series 6615 Fixed • 6740 Fixed
3 7/8" Heavy Commercial Hung Thermal Window



CONFIGURATIONS

Single Hung • Fixed

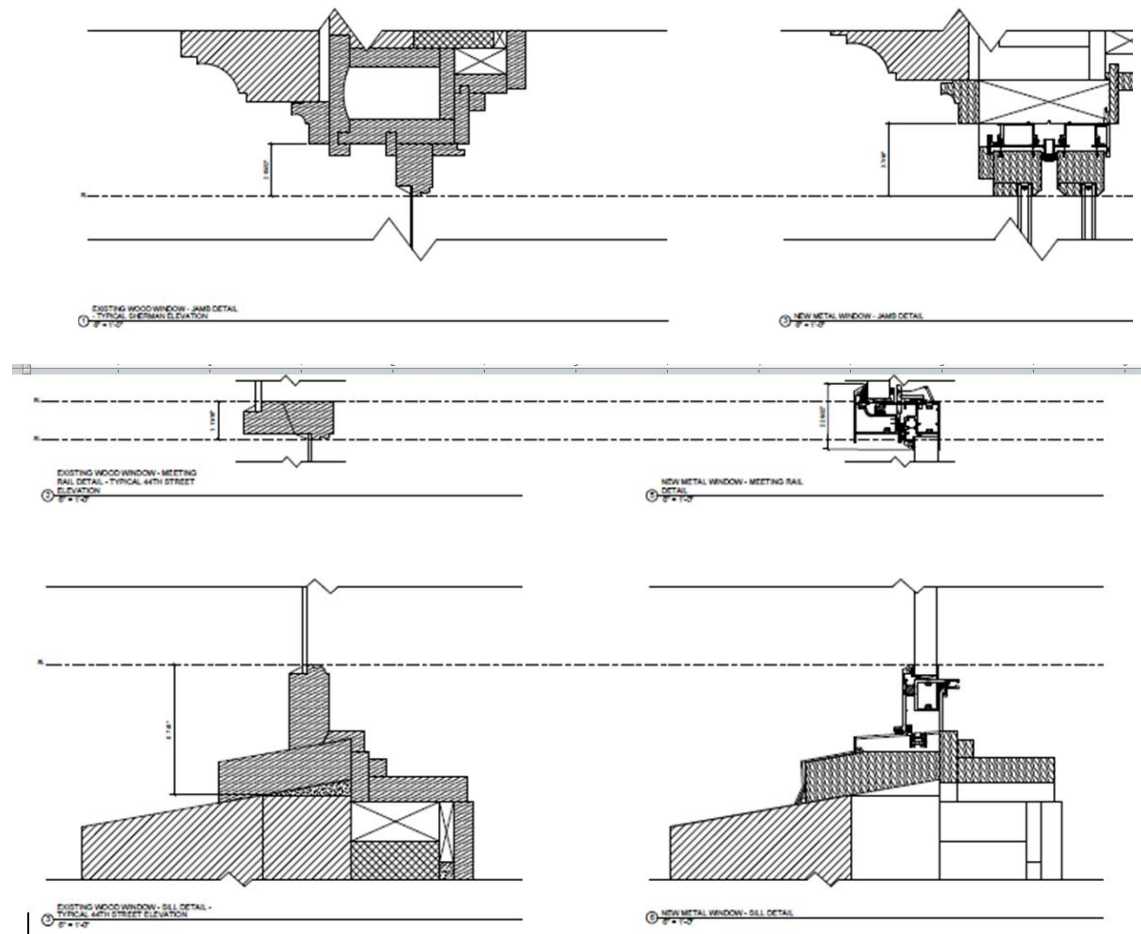
This product family of hung windows retains a heavy commercial and architectural rating to meet the most demanding specifications and is designed for projects ranging from historical replication to new construction. This hung window series is an attractive and economical product for a wide range of applications. Multiple glazing options offer flexibility to meet specific design requirements. With removable putty glaze frame and snap-in-grid outside of the glazing pocket. A thermal barrier in the frame and sash improves thermal performance enhancing energy saving potential. Offered with a complete line of sub frames, mullions and architectural sills, this product family provides the complete solution for fenestration needs.

Features

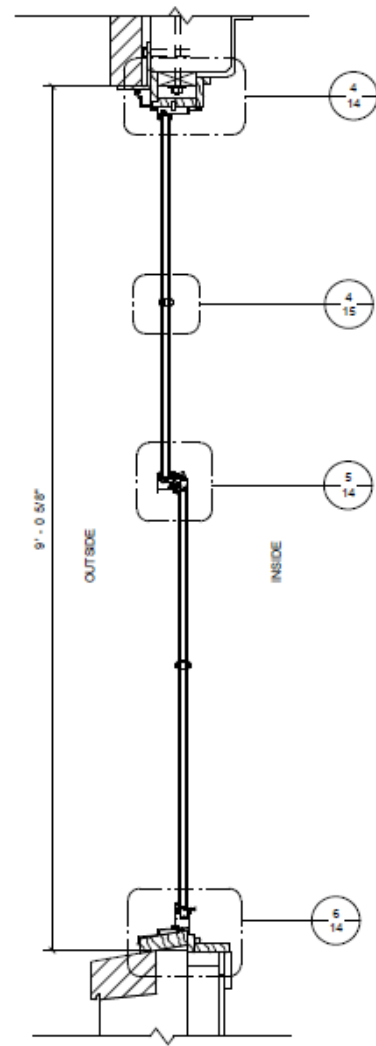
Benefits

Thermal barrier in vent and frame	Improves U-Factor performance Enhances energy saving potential
Weather-stripped sash and sill	Provides superior air and water performance
Continuous interlock meeting rails	Improves air infiltration resistance
Accommodates glazing from 1/8" to 1" depth	Expands design and energy saving options
Inside or outside glazed sash	Flexibility in design requirements for glazing
Exterior snap-in-grid	Easily removable grid for glass cleaning
Automatic sash locks available	Increased convenience
Screen frames of extruded aluminum alloy are available	Stronger, more durable screens
Trim-All™ panning available	Allows matching of existing sight lines in restoration projects
Accessory line of subframes, mullions, and architectural sills	Allows custom designs with standard product
Anodized or painted finishes available	Multiple options to answer economic and aesthetic concerns

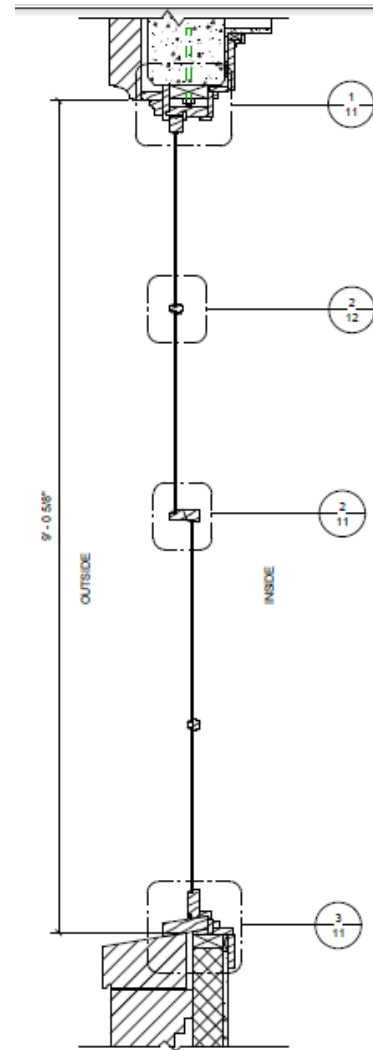
EFCO Windows were one of the manufacturers looked at by the Milwaukee Public Schools.



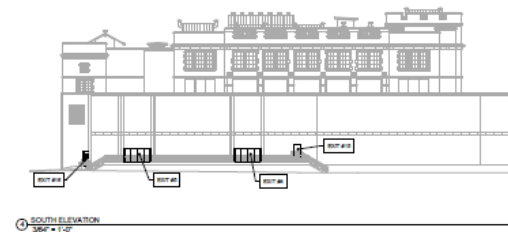
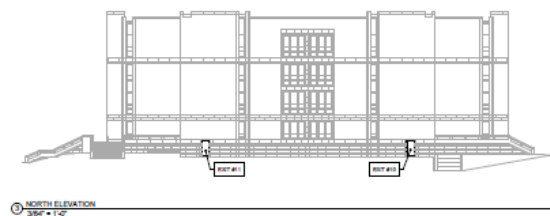
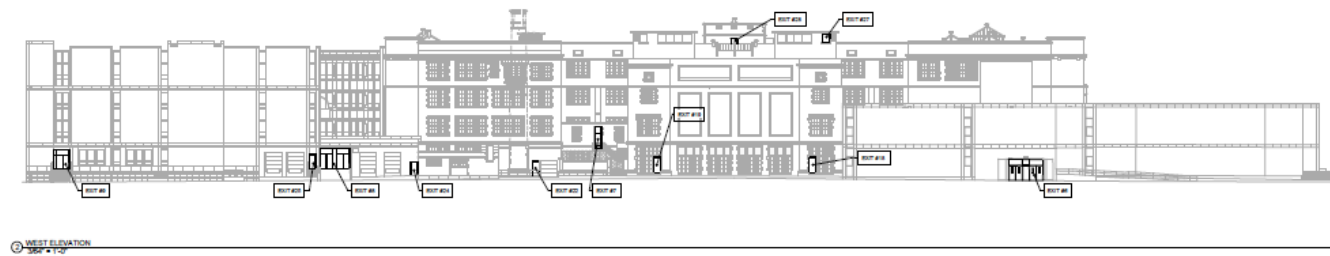
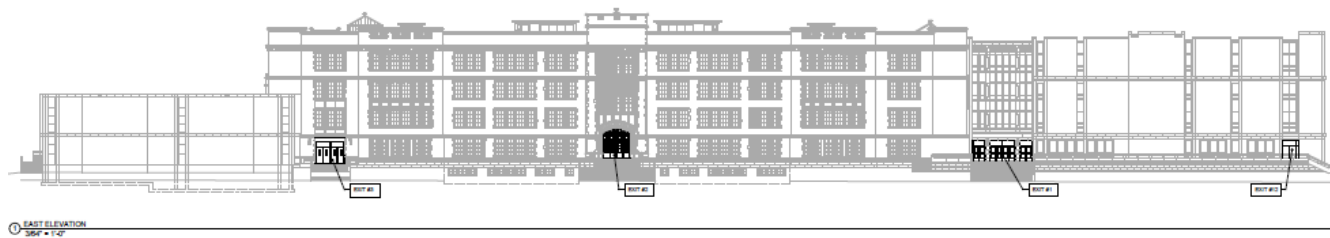
Comparison between existing wood window profiles and metal replacement windows.



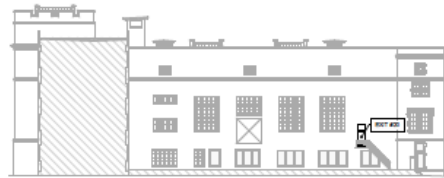
④ NEW METAL WINDOW SECTION
1" = 1'-0"



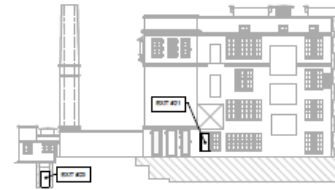
③ EXISTING WOOD WINDOW SECTION
1" = 1'-0"



Locations where replacement doors will be installed.



⑩ NORTH COURTYARD-NORTH ELEVATION
3/64" = 1'-0"



⑪ NORTH COURTYARD-SOUTH ELEVATION
3/64" = 1'-0"



⑫ NORTH ELEVATION AT MAIN ENTRANCE
3/64" = 1'-0"



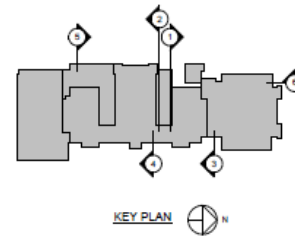
⑬ NORTH ELEVATION AT FRONT
ENTRANCE
3/64" = 1'-0"



⑭ 44TH STREET AT RECREATION CENTER
3/64" = 1'-0"



⑮ 44TH STREET AT ATHLETIC EQUIPMENT
3/64" = 1'-0"



KEY PLAN

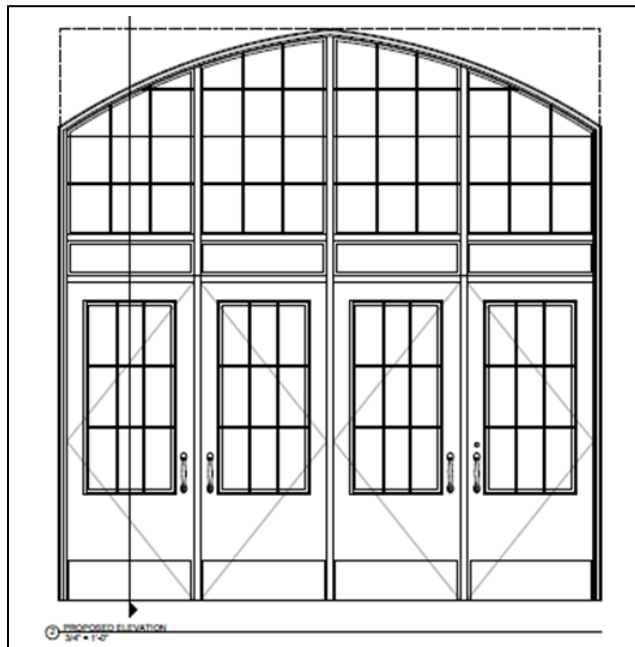
Locations where new doors will be installed.



ORIGINAL MAIN ENTRANCE, 1916



ORIGINAL MAIN ENTRANCE, 1930



ORIGINAL MAIN ENTRANCE, 2015

New multi-lite doors will replace the current condition at the former main entrance.



The memorial window is being restored and installed at the transom above the former main entrance.



Current metal entry doors represent alterations to and some replacements of earlier original doors.



SpecLite 3® FRP

Standard Color Selections

PEBBLE GRAIN FRP

Special-Lite's exclusive SpecLite 3® Fiberglass Reinforced Polyester (FRP) face sheets are available in 12 standard through-molded colors. Non-SpecLite 3® pebble grain FRP face sheets are available painted to match any of our 20 established Kynar 500® colors, or any custom color. Color selections are subject to change without notice.

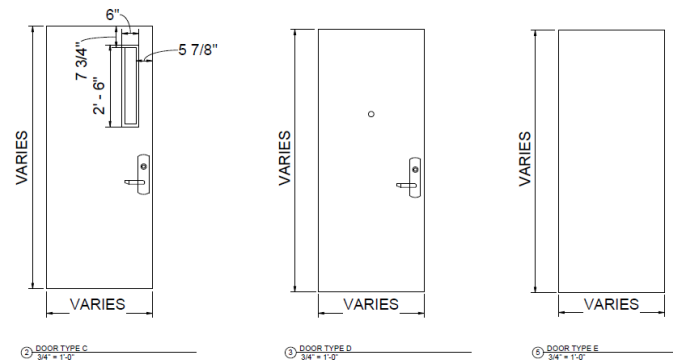
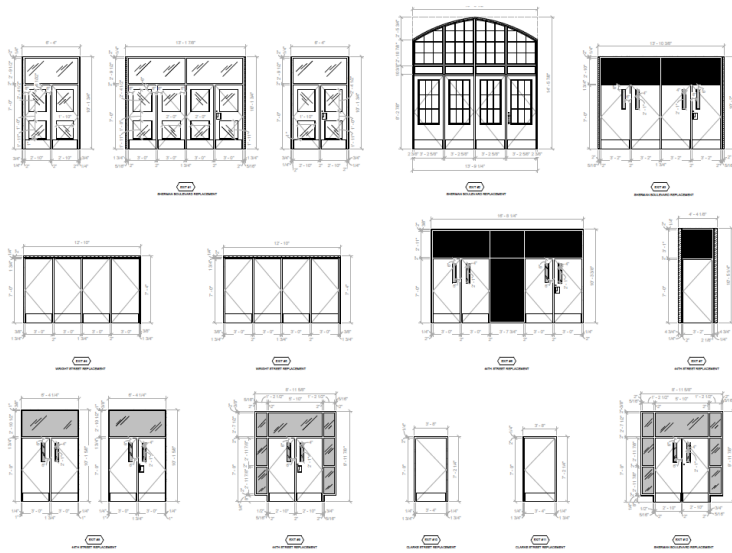
These color charts are intended for general reference only. Final decisions should be made from actual material samples, which can be ordered directly from our website by using our online order form at www.special-lite.com.



Kynar 500® is a registered trademark of Akzo, Inc.

Special-Lite, Inc.
P.O. Box 6, Decatur, MI 49045
Ph: 800.821.6531 • Fax: 800.423.7610 • www.special-lite.com

Rev. #150185
15M 10/14



Replacement doors will be made of fiberglass with a textured, sparkly finish. The doors at the former main entrance will have a smooth finish.