

15th & North Housing Development



Development Team Introductions

- Legacy Midwest Renewal Corporation
- Evergreen Real Estate Group
- Continuum Architects
- Greenfire Management Services
- HN Development (Sharon and Larry Adams)

Why this location?

- ★ HISTORIC PRESERVATION
- ★ MIXED INCOME
- ★ INVESTMENT
- ★ WALK-ABLE NEIGHBORHOOD
- ★ CORRIDOR ACTIVITY
- ★ JOBS



Mixed-Income | Mixed-Use

64 Total Apartments

- Unit mix includes 39 one-bedroom units, 15 two-bedroom units, 8 three-bedroom units, and 2 four-bedroom units
- 36 units will be in the Blommer Building and 28 units will be in the new building
- 16 units are set-aside as Wisconsin Housing and Development Authority (WHEDA) Supportive Housing units

Over 2,000 SF of Commercial Space

- General office
- Other TBD use as allowed under LB2

Development Amenities

- Community room and outdoor patio
- On-site property management office
- Sustainability elements
- In-unit washer/dryer and dishwashers
- Maximize accessibility for rehabilitated building, new building, and site
- Major bus line directly outside building
- Proximity to Outpost, Social Development Commission, YMCA, St. Ann's Intergenerational Center

Existing Building and Site



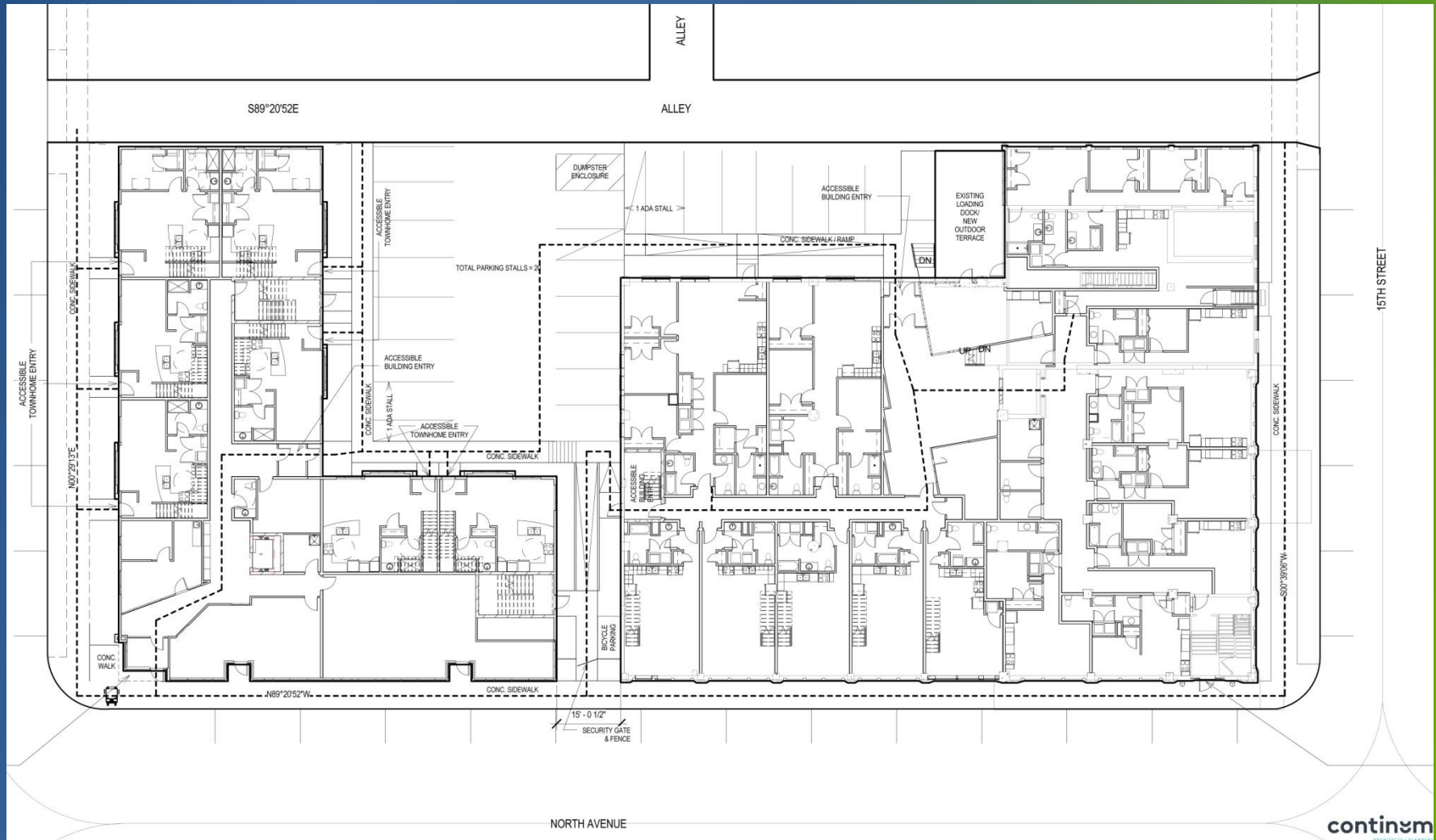
New Development Plans | Exterior



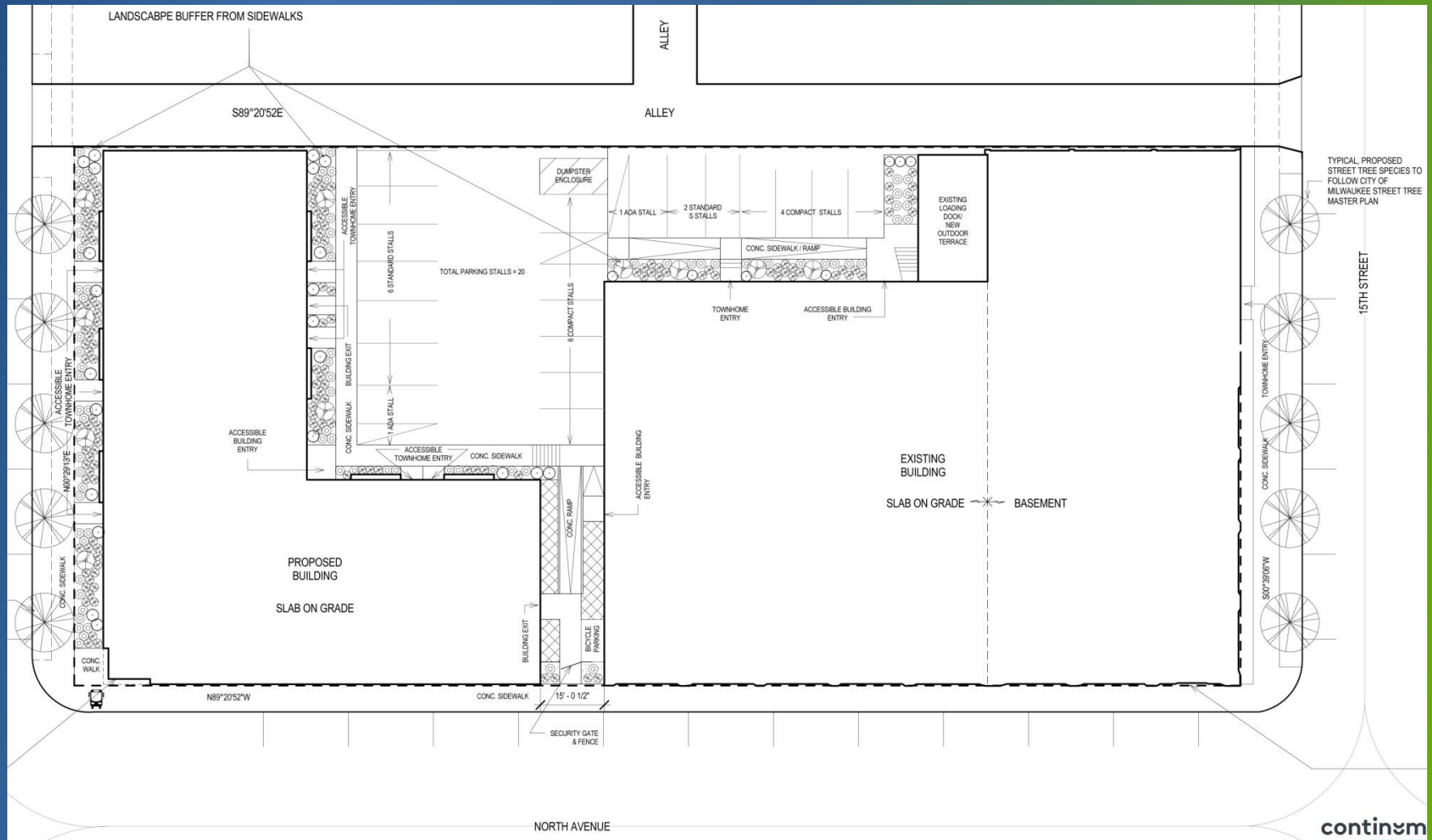
New Development Plans | Exterior

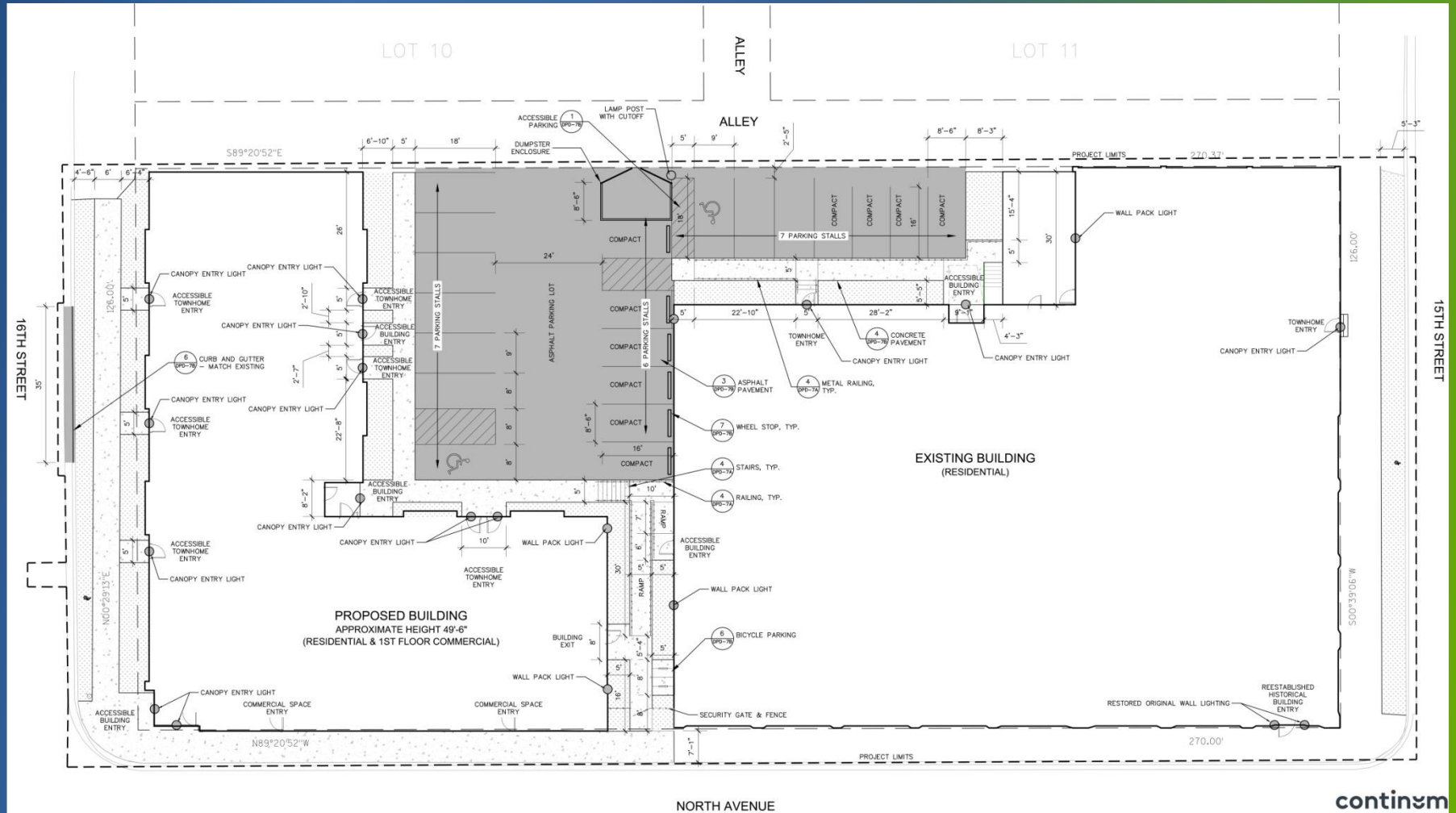


New Development Plans | Site Plans



New Development Plans | Site Plans





New Development Plans | Aerial View



New Development Plans | Aerial View

