

City of Milwaukee Department of Public Works

FLEET REPORT August 2008



This report is printed on recycled paper.

Managing the Effects of Change:

Fleet/equipment services impact the delivery and cost of nearly every service provided to the public, impact the productivity of nearly every employee, support emergency services making the difference between life and death, and support the maintenance of public infrastructure which helps support local economy and quality of life.

Fleet management is a vital but often under-appreciated and over-simplified area of endeavor. Managing the effects of change, while maximizing fleet effectiveness in supporting government services, is the main goal of the department.

Every effort is being made in extending vehicle usage and in lowering the total cost of ownership for taxpayers. As the largest city in Wisconsin, the City Fleet has taken the leadership role for improving air quality with the use of alternative fuels such as bio-diesel and sustainable practices.

As Superintendent, I take great pride in our highly skilled vehicle technicians and other talented individuals operating behind the scenes, providing proficient fleet repairs maintenance, driver training and dispatch services for the City of Milwaukee.



Venu J. Gupta
Superintendent, Buildings and Fleet
August, 2008

leadership role for improving air quality with the use of alternative fuels such as bio-diesel and sustainable practices.

As Superintendent, I take great pride in our highly skilled vehicle technicians and other talented individuals operating behind the scenes, providing proficient fleet repairs maintenance, driver training and dispatch services for the City of Milwaukee.



Venu J. Gupta
Superintendent, Buildings and Fleet
August, 2008

Fleet Services Overview

- Fleet Repairs – 4 garages
 - » CENTRAL
 - » NW GARAGE
 - » LINCOLN GARAGE
 - » DPW FIELD HQTRS
- Vehicle Acquisition and Disposal
- Dispatching – 400+ drivers
- Stockroom and Tire Shop –
\$1 million in parts, \$111,000 in tires
- Driver Training/CDL/Accident
Investigations/400 Training Sessions
- 17 Fuel Facilities



Central Repair Garage

From
Page 2
Fleet Report



Tire Shop 123 N. 25th St

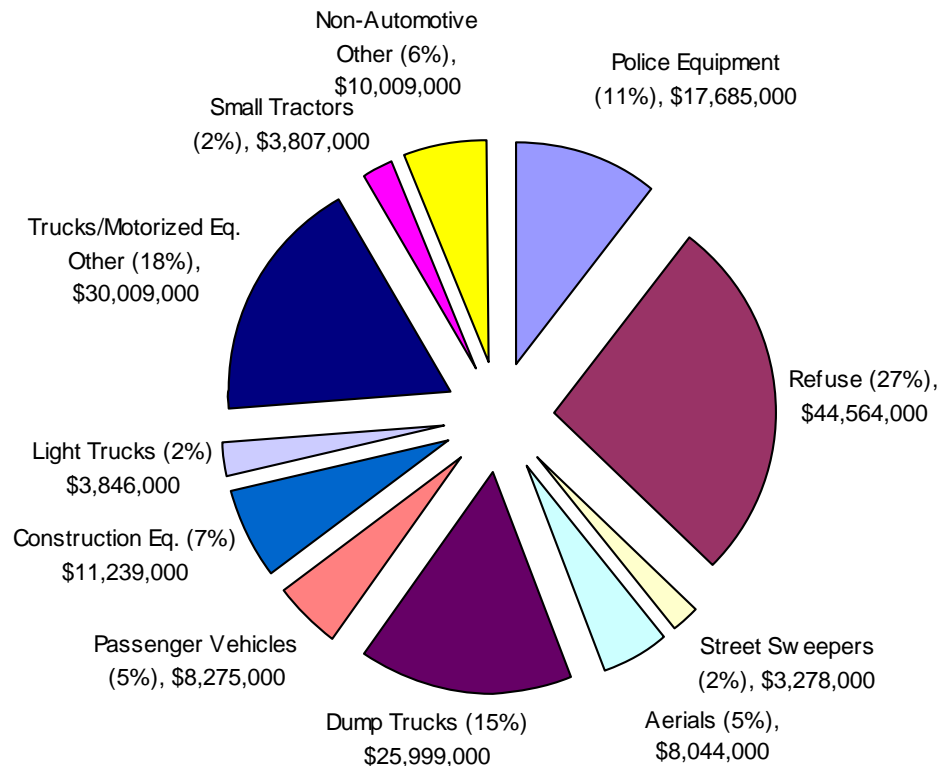


Lincoln Yard Fuel Island

Equipment Maintained by Fleet Services

Equipment Maintained by Fleet Services
(% of Fleet Value), \$ Replacement Value

**From
Page 4
Fleet Report**



Equipment Types - Quantities

Police Equipment	675
Refuse Collection-All Types	201
Street Sweepers	22
Aerials, Equipment	53
Dump Truck - All Types	266
Passenger Vehicles	365
Construction Equipment	493
Light Trucks	158
Trucks and Motorized Equipment - Other	497
Small Tractors	56
Non-Automotive Equipment - Other	1,258

FLEET INITIATIVES

GREENING THE FLEET

Balancing Fleet Efficiency, Cost, and the Environment

Clean Diesel, DOC's (Diesel Oxidation Catalyst) & Idle Reduction

- Ultra-Low sulfur Diesel (15ppm Sulfur)
- Bio-Diesel
- DOC (Diesel Oxidation Catalyst) muffler
- Idle Reduction Program

CMAQ Grant \$264,476 (2008-2009)

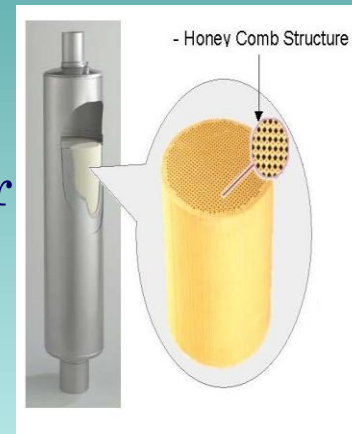
- Increases Bio-Diesel use
- DOC's on 28 Packers
Diesel Oxidation Catalyst
- Reprogram idle shut-off (73 Packers)

WDNR Grant \$105,000 (2007-2008)

- DOCs retrofit 110 Refuse Packers & dump trucks

EPA Grant \$89,000 (2005-2007)

- Retrofitted 50 Refuse packers w/ DOCs



Diesel Oxidation Catalyst

From
Page 6
Fleet Report



FLEET INITIATIVES

GREENING THE FLEET

Balancing Fleet Efficiency, Cost, and the Environment

From
Page 7
Fleet Report

Idle Reduction Program

- Education, Training & Monitoring
- Automatic Shut Down of Engines on Heavy Vehicles

Eco-Driving Pilot Project

Partnership Project (1st of it's kind)

- (1st fleet in the state) (September 2008)
- Wisconsin Clean Cities
- MATC
- City of Milwaukee

UNLEADED

Feb 2002 \$0.96/gal
June 2007 \$3.01/gal
June 2008 \$3.90/gal

DIESEL

Feb 2002 \$0.88/gal
June 2007 \$2.60/gal
June 2008 \$4.53/gal

CRUDE OIL

Feb 2002 \$ 22.81/barrel
June 2007 \$ 56.08/barrel
June 2008 \$140.00/barrel

Tires

- Recapped 885 tires – 2007
- 65.3 tons of tires recycled – 2007
- Nitrogen filled tires (pilot program)
- tires run cooler and hold pressure longer

Batteries

624 used batteries Recycled by vendor
(LEAD)

Oil & Coolant Filters (new program)

- Filter crushing machine – November 2008

Vehicle Wash Chemicals

- 30% Biodegradable Chemicals
- (increase to 60% in 2009)

Salvage Old Catalytic Converters

- To recycle platinum and palladium
- (program just initiated)



FLEET INITIATIVES

GREENING THE FLEET

Balancing Fleet Efficiency, Cost, and the Environment

Used Oil

- Sold to recycle vendor
- Percentage of drain oil is used as fuel for boiler, to provide supplement heat



From
Page 8
Fleet Report



Flex Fuel Vehicles

78 vehicles purchased in 2007



On Site Oil Changes
No Shuttling vehicles to other locations
500 Vehicles on site

7

Reduce Frequency of Oil Changes – 2009

- Increase use of synthetic oil
- Oil testing of regular oil to reduce oil changes



Hybrid Aerial Bucket Truck
(On Order) Operates on Batteries
Reduces noise, emissions and Fuel
Payback = 6 years



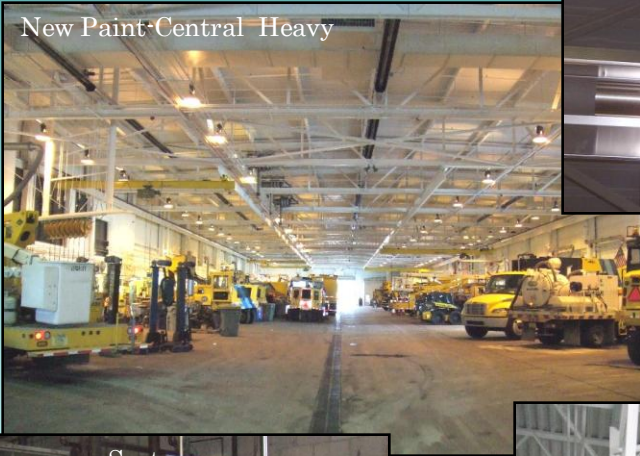
Hybrid Vehicles
Ford Escape
29 MPG vs. 19 MPG
Payback = 5 years

Fleet Initiatives

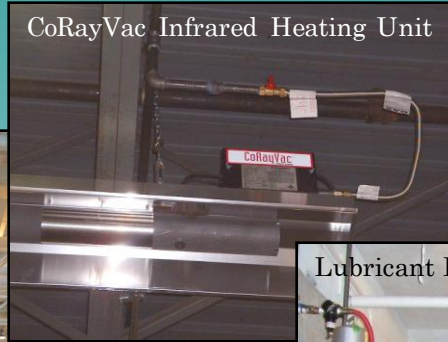
Improving Fleet Repair Facilities

From
Page 9
Fleet Report

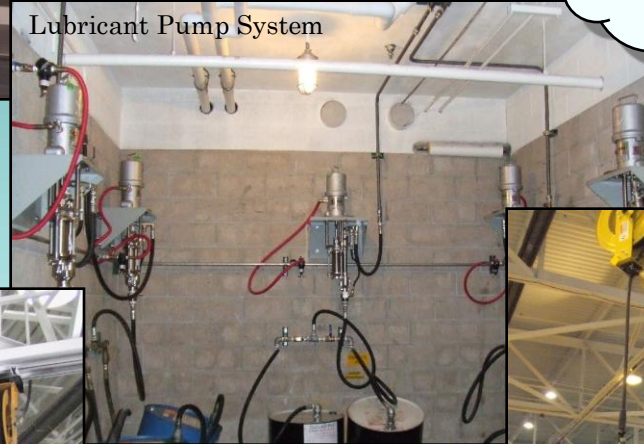
New Paint-Central Heavy



CoRayVac Infrared Heating Unit



Lubricant Pump System



Air Compressor System



Light Side Lubricant Distribution



Heavy Side Lubricant Distribution

Status Update of the Comptroller's Fleet Report

BUILDINGS & FLEET/DPW



**FLEET
MAINTENANCE
MANUAL**

AUGUST, 2008

**From
Page 9
Fleet Report**

- 2008 Fleet Maintenance Manual
- 2008 Fleet Report
- DPW Operations Division
Major Work Rules
- Quarterly Mileage Reports
- Snow and Ice Control Manual

Status Update of the Comptroller's Fleet Report

"develop and report fleet management performance indicators"

Fleet Vehicles

From
Page 26
Fleet Report

Exceeding Availability Goals	Police Vehicles	Light Vehicles	Heavy Equipment
Goals	95%	95%	90%
2008 Availability	96.5%	94.8%	92.1%

Status Update of the Comptroller's Fleet Report

On Time Preventative Maintenance

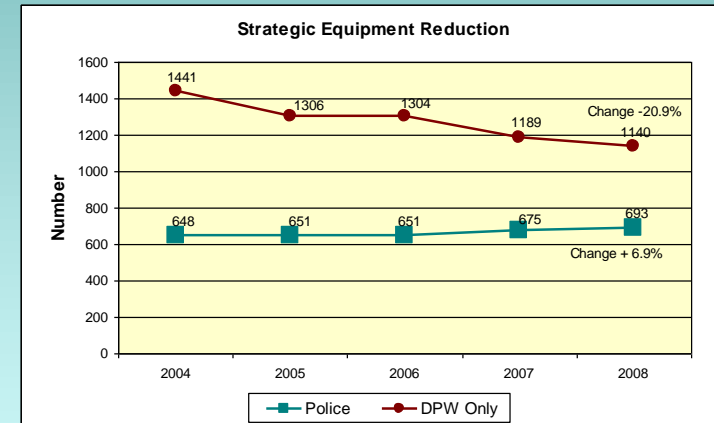
From
Page 23
Fleet Report

- 59% (2006) to 73% (2007) to 79% (2008 Jan – Jun)

Vehicle Reduction Overall 12.3% Since 2004

- DPW (-22%), Passenger (-40%), Police (+7%)

From
Page 20
Fleet Report



Light Vehicles: Tracking 363 (including 43 Special Purpose Vehicles)

- 24 Low Mileage Vehicles (8%) Under Scrutiny
- CPW March 2008 Policy
- 28% Reduction Since 2004 (505 to 363)

From
Page 10
Fleet Report

Other Fleet Activities

- Wheel Checks

From
Page 27
Fleet Report



• Tire Pressure Monitors



ACCU-PRESSURE SAFETY CAPS are a new tire pressure monitor product which will help drivers know when their tire pressure is too low.

Maintaining Proper Tire Pressure Will:

- Reduce the risk of accidental roll over and hydroplaning.
- Increase fuel economy.
- Reduce wear on tires.



SAFE



CAUTION



DANGER

Thank you!

Venu J. Gupta