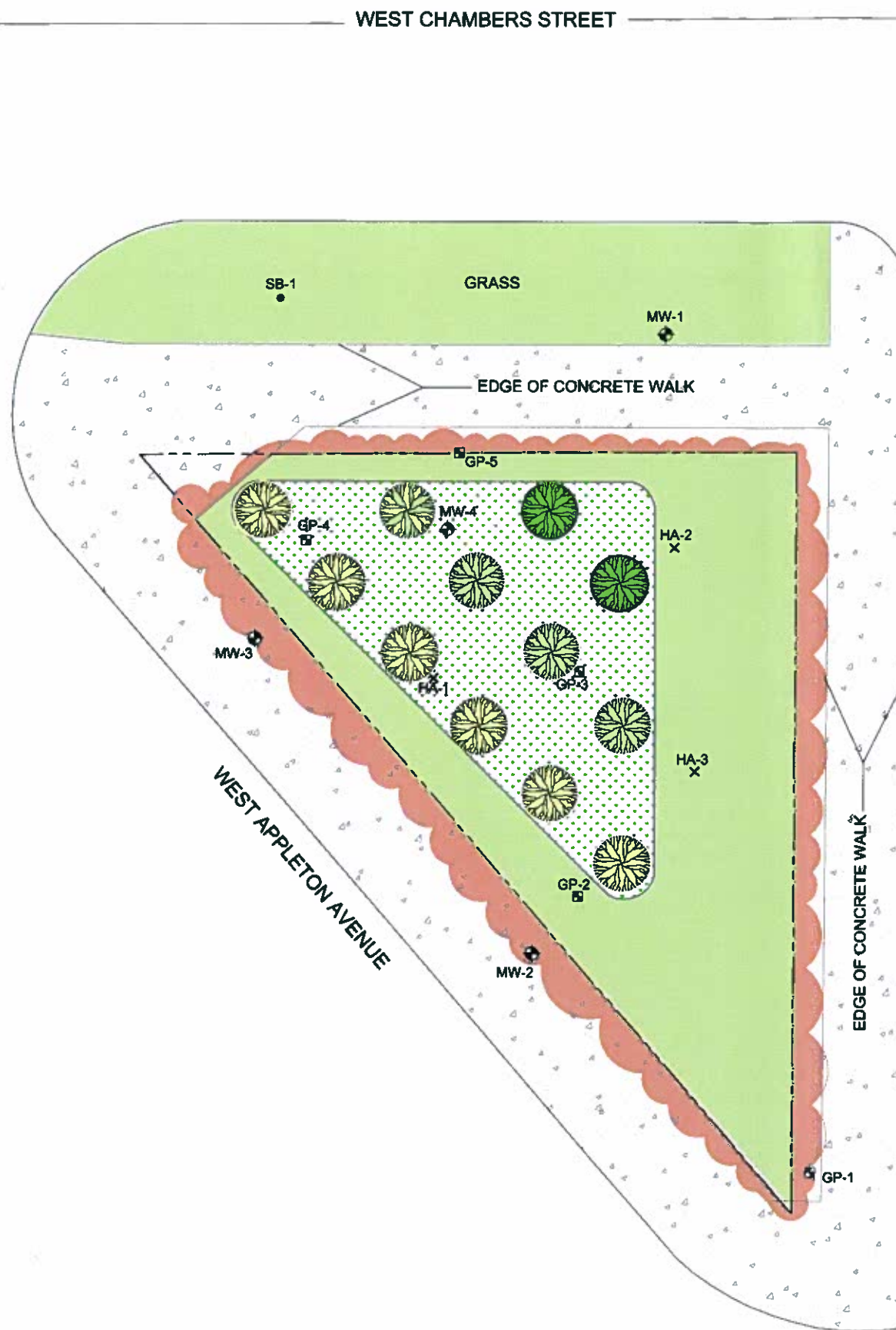


P:\GED\25688245 Milw-Appleton Ave Cleanup\Figures\FIG2 Planting Plan MOD 070908.dwg User: ramesh\_rlink Jul 17, 2008 12:56pm



NORTH



SCALE IN FEET

### LEGEND

- ◆ GEOPROBE SOIL BORING (INSTALLED BY SIGMA)
- GEOPROBE SOIL BORING / TEMPORARY MONITORING WELL (INSTALLED BY SIGMA)
- + SOIL BORING
- ◆ MONITORING WELL
- ✕ HAND AUGER BORING



Quaking Aspen  
*Populus X tremuloides*



Hybrid Poplar  
*Populus X*



Bitternut Hickory  
*Carya cordiformis*



Wild Rose  
*Rosa blanda*



Grass mix within the trees:  
*Lolium multiflorum* (Annual Ryegrass) and  
*Andropogon scoparium* (Little Bluestem)



Interior with no trees, add to the above grasses:  
*Elymus virginicus* (Virginia Wild Rye)  
*Carex vulpinoidea* (Fox Sedge)

NOTE: THIS PLANTING MAY CHANGE BASED ON SOIL AND GROUNDWATER DATA CURRENTLY BEING COLLECTED.

CITY OF MILWAUKEE  
6024 W. APPLETON AVE.  
MILWAUKEE, WI

### FIGURE 2 SITE PLAN PLANTING PLAN

DESIGNED BY	DM
ORN. BY	RF
PROJ. NO.	25688245
DATE	7/14/08

**URS**