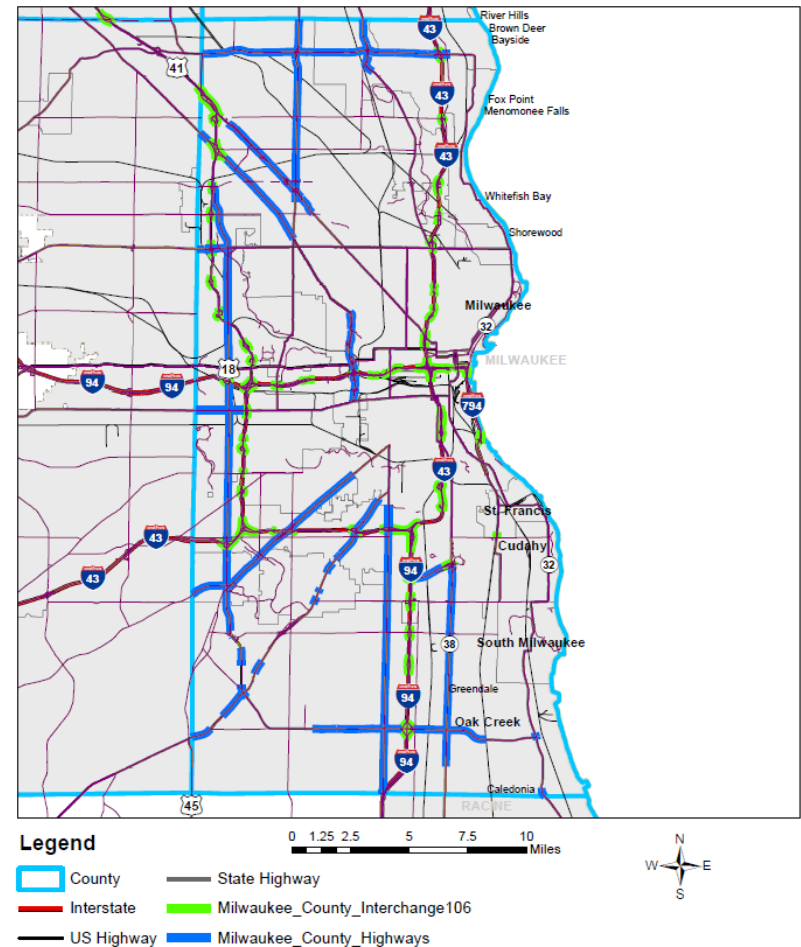


Intergovernmental Mowing Policies State Highways Located in Milwaukee

Milwaukee County



David Sivyer
Forestry Services Manager

Background

- ▶ Milwaukee County – WisDOT Contractor for Highway Maintenance
- ▶ Mowing not line item in Highway Maintenance budget – Viewed as lower priority than street maintenance

Background

- ▶ Reduction in mowing frequencies implemented by WisDOT Transportation Director (Busalacchi) met with stiff resistance and high complaints in urban areas
- ▶ WisDOT adopted **Urban Mowing Policy** in June 2015 (Waukesha “urban” representative)

WisDOT Urban Mowing Policy

- ▶ Urban State Highway
 - Traditionally medians or areas with curb and gutter
 - “Up to” 10 mowing cycles/season
 - Begin when vegetation reaches 9” high
- ▶ Urban State Highway Interchanges
 - “Up to” 6 mowing cycles/season
 - Begin when vegetation reaches 18” high
 - Minimum mowed height of 6” high
- ▶ Long-line Mowing
 - One time per year to be completed by July 1 (NR 40 compliance)
 - Single mower pass
- ▶ Safety Mowing (as needed)

Differential Mowing Services

| Mowing Type/Location | City Property DPW-Forestry | WisDOT/County |
|------------------------|--|--|
| Urban STH | Expanded role in mowing local ROW abutting STH | Up to 10X cuttings annually. 3-4 week cycle beginning at 9" |
| Urban STH Interchanges | None | Up to 6X cuttings annually beginning at 18" |
| STH Long-Line Mowing | NA | Mow 1 pass 1X annually by July 1 (NR 40 compliance). Mow to 6" |
| STH Safety Mowing | NA | As needed |
| Local Boulevards | 26 mowing cycles per year beginning in April | Up to 10X cuttings annually |
| Parcels/Vacant | Up to 16 mowing cycles annually beginning in May | Monthly/Real Estate Excess Parcel Mowing frequency? |

DPW Forestry Mowing

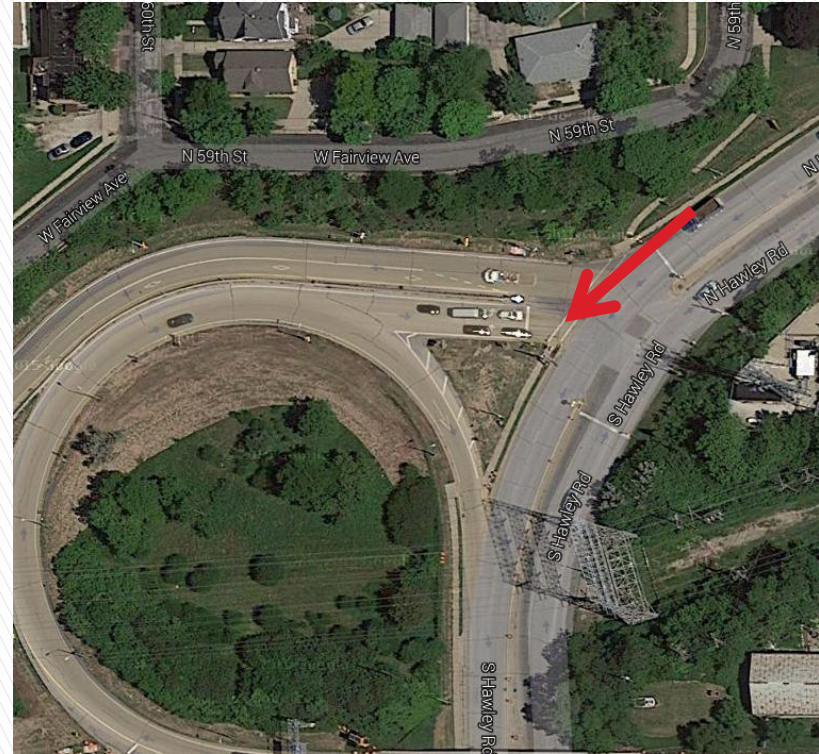


City Boulevards




City Lot Mowing

WisDOT/County Mowing

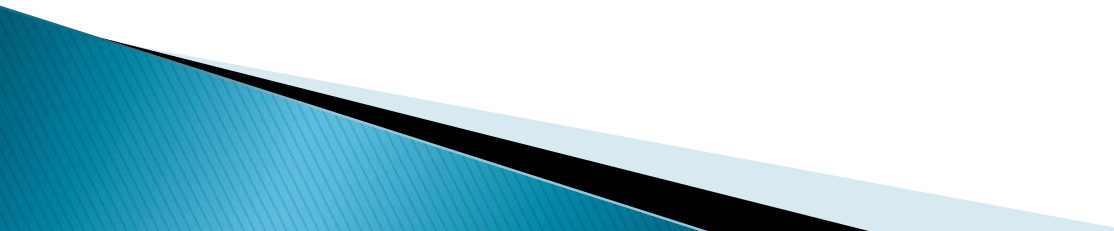


Hawley Off-Ramp at I-94

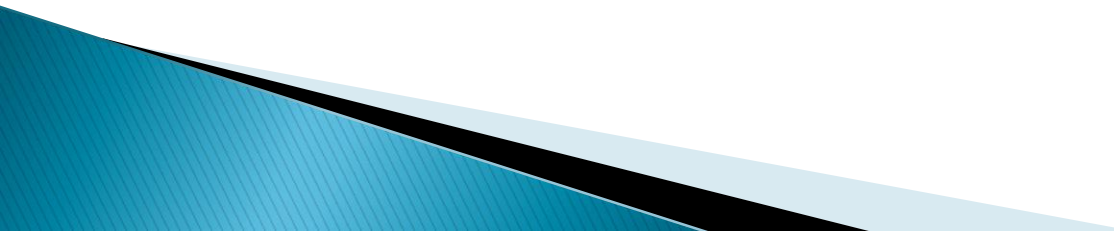
Intergovernmental Mowing Work Group

- ▶ Workgroup “Charter” prepared by WisDOT
 - ▶ Mowing Work Group convened April 2016
 - ▶ Representatives
 - WisDOT SE Region–Bureau of Highway Maintenance
 - Milwaukee County – Highway Maintenance
 - City of Milwaukee – DPW/Forestry
- 

Intergovernmental Mowing Work Group Charter

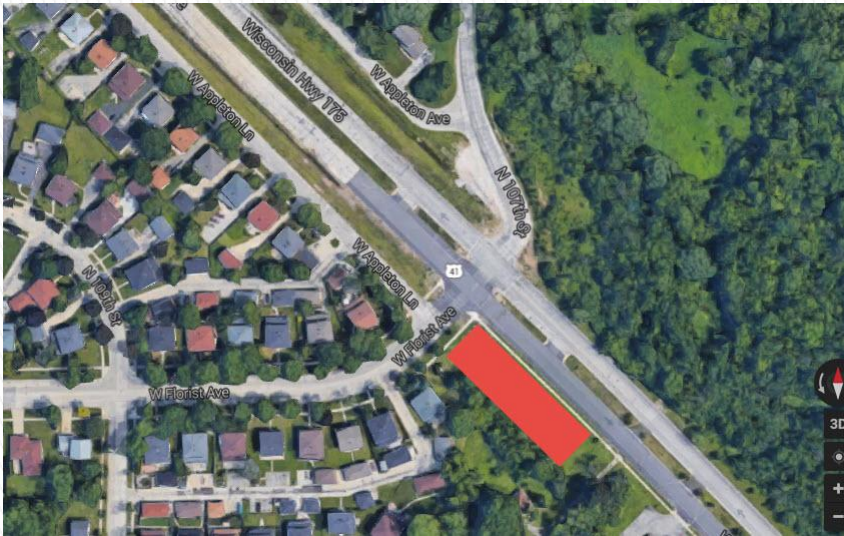
- ▶ Identify (map) existing mowing areas/agency responsibility/shared services efficiency
 - ▶ Identify service gaps (locations and differences between WisDOT Urban Mowing Policy and local municipality mowing standards)
- 

Intergovernmental Mowing Work Group Charter

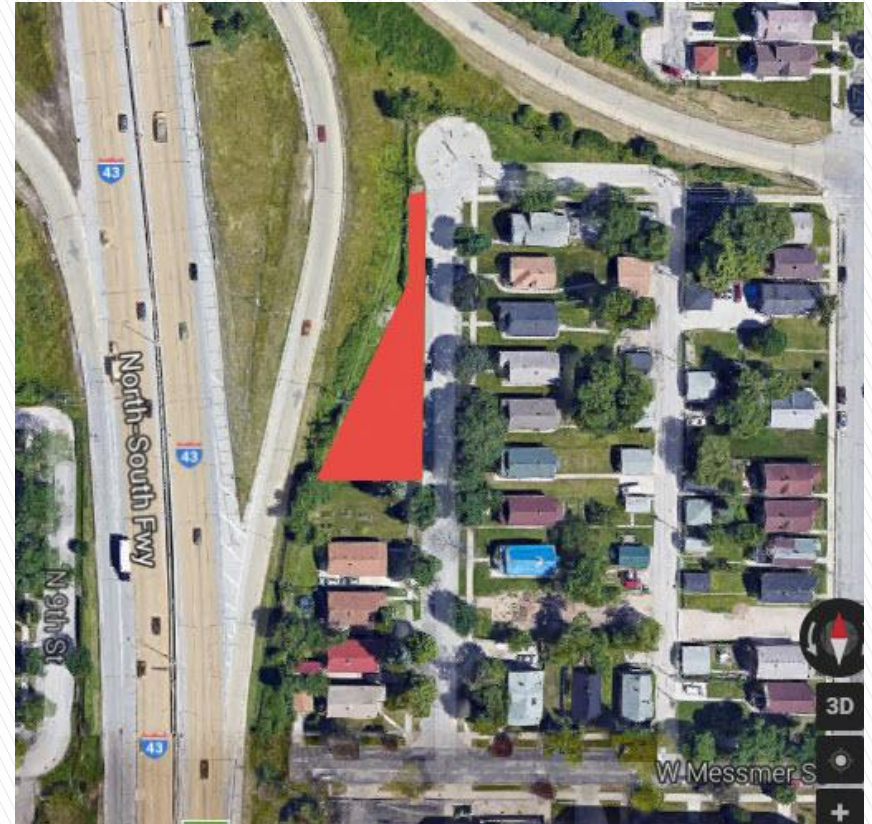
- ▶ Identify opportunities for amendment to Urban Mowing policy
 - ▶ Improve accuracy of messaging to public and public officials regarding intergovernmental mowing policies
- 

Service Gap Types

Remnant State Parcels



W Florist Ave at STH 175



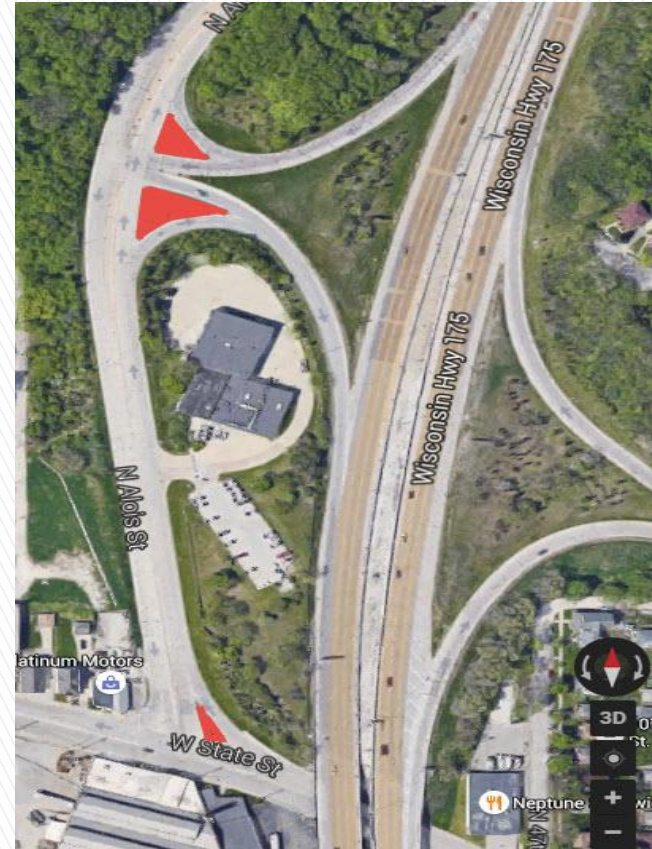
NB I-43 Ramp at Green Bay Ave

Service Gap Types

Local STH Interchange Parcels



I-43 @ Capitol Interchange
– Exit Ramp Vision Triangle



SB Access Ramp to STH
175 from N. Alois St

Service Gap Types

Local street ROW adjoining State HWY



Park Hill ROW



Park Hill ROW
Street View

Service Gap Types

Local street ROW adjoining State HWY



5th Street Local St ROW
Adjoining I-94/43 ROW



Woody Vegetation
encroachment into 5th St ROW

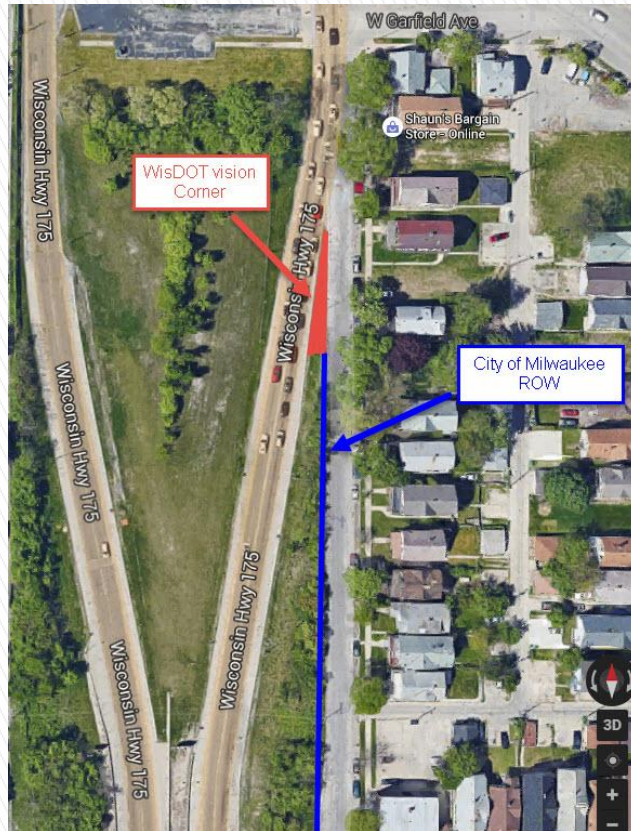
Service Gap Types

Local street alleys ending at STH



Service Gap Types

Local street ROW adjoining State HWY



NB State Highway 175 –
W side of N 46th St. ROW

Service Gap Types

Local street ROW adjoining State HWY



115th Street ROW N of Florist,
adjoining I-45 mowed by Forestry

Prospective Interagency Mowing



S 4th St at Lincoln – Freeway
Parcel outside I-94 ROW fence



Vision triangle mowing at S 14th
and W Parnell (Airport Spur bridge)

Prospective Interagency Mowing



W. Clybourn at 20th St
adjoining I-94

10' ROW previously
mowed by County

Mowing Work Group

Charter Progress

- ▶ Identify (map) existing mowing areas/agency responsibility/work sharing efficiencies
 - Ongoing joint GIS mapping project (State/County/City) projected completion Fall 2016
 - Assessment and resolution of complaints Summer 2016
 - Increased State/County accountability
 - Forestry CBO contract mowing
 - Identify additional City mowing acreage and estimated costs for 2017 budget request.
 - Identify scope of work (mow frequency, equipment requirements) for contract mowing

Mowing Work Group

Charter Progress

- ▶ Identify service gaps (locations and differences between WisDOT Urban Mowing Policy and local municipality mowing standards)
 - Differential service standards identified
 - Ongoing efforts to identify service gap locations
 - ▶ Identify opportunities for amendment to WisDOT Urban Mowing policy
 - Ongoing
 - ▶ Improve accuracy of messaging to public and public officials regarding policies intergovernmental mowing policies
 - Ongoing/aided by GIS mapping project
- 