



CIMC: Governing Open Data in Milwaukee

AGENDA

Introductions

Defining Open Data

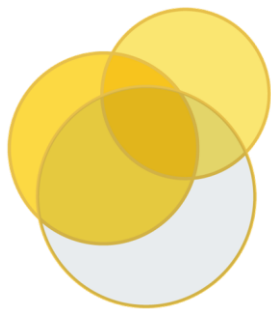
Benefits of Open Data

Milwaukee's Work with WWC

Committee Responsibilities

Next Steps and Discussion



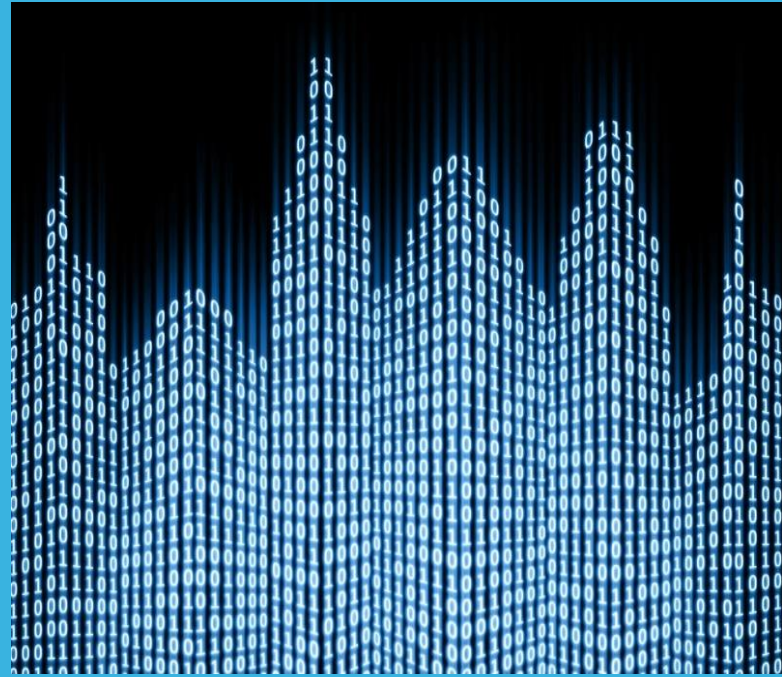


SUNLIGHT
FOUNDATION

What Works Cities

- 100 mid-sized cities
- Technical support, access to expertise, peer-to-peer learning to help cities to better use data and evidence to engage the public, improve services, evaluate progress and invest in “what works”
- <http://whatworkscities.bloomberg.org/>


DEFINING OPEN DATA



OPEN DATA IN MILWAUKEE SHOULD BE...

Public	Published datasets live in the public domain.
Machine readable	Datasets are available in formats that computers can understand.
Up-to-date	Datasets contain current information to encourage maximum use.
Accessible	Datasets are accessible to the broadest range of users to use for varying purposes.
Automated	When datasets are created or updated, they are automatically uploaded to relevant systems.

BENEFITS FOR INTERNAL USERS

- Saves time
 - Creates opportunities for collaboration
 - Smarter decisions
 - Adds capacity
- 
- Decorative geometric shapes at the bottom of the slide, including a large blue triangle and an orange triangle.

INTER-DEPARTMENTAL COLLABORATION

Open data makes it easier for departments to use each other's data

The District of Columbia uses the cross referencing of data from different agencies to manage child welfare cases.

DISTRICT OF COLUMBIA
CHILD AND FAMILY SERVICES AGENCY

FACES.NET

Referral Case Client Provider

Last Refresh
date and time.

Last Refresh: 11/08/2012, 10:17 AM

Performance Measures

Measure	Current Month	Prior Month
Visits to Children/Families In-home	11	11
Court Reports	1	0
Social Worker to Child Visits - Out of Home	0	0
Child Case Plan Status	1	1
Parent to Child Visits	1	1
Weekly Visits in First Four Weeks of Placement	1	1
Family Case Plan Status	2	2
Initial Parent Assessment	2	1

Child Case Plan Status

ID	Name	Last Case Plan	Date Case Plan Due	Case Plan Type Required	Indicator
1205	[Name]	04/30/12	10/27/12	Family Case Plan	R
1323	[Name]	04/30/12	10/27/12	Family Case Plan	R
2479	[Name]	10/12/12	10/12/12	Family Case Plan	R
3277	[Name]	10/29/12	10/29/12	Family Case Plan	R
3974	[Name]	11/24/12	11/24/12	Family Case Plan	Y
1985	[Name]	05/25/12	11/21/12	Family Case Plan	Y
2326	[Name]	10/11/12	04/09/13	Child Case Plan	G

Legend: 30+ Days Until Due (Green), Due in Less than 30 Days (Yellow), Overdue/Non-Applicable (Red)

BENEFITS FOR EXTERNAL USERS

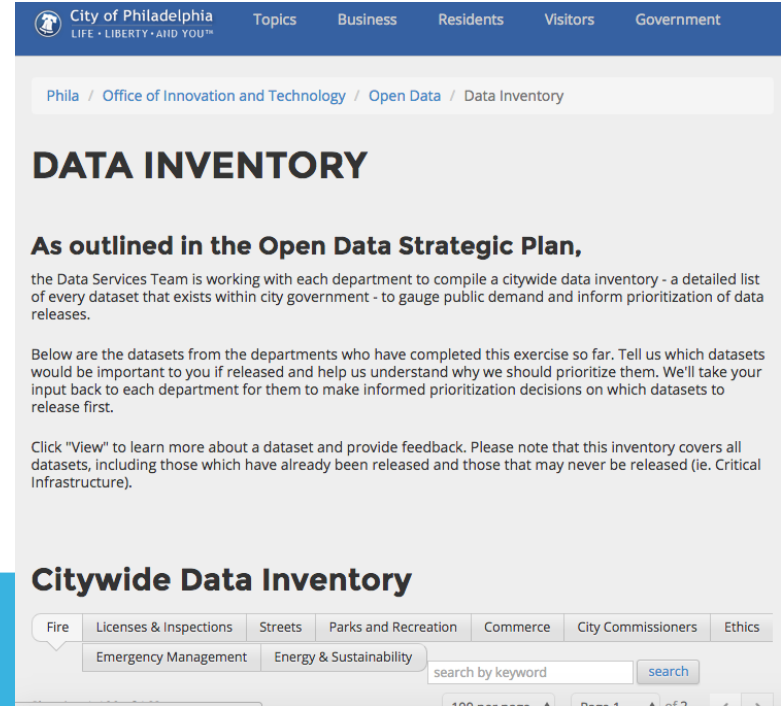
- Easier access to up-to-date information
- Nonprofits, academic institutions, media can use data to drive research
- Create business opportunities
- Increase transparency and accountability




PUBLIC ENGAGEMENT

Open data helps city employees
engage with the public

Philadelphia asked the public for
input on dataset release, and
received many comments on value
and potential use cases



DISCUSSION POINT

- What datasets are most frequently used and/or requested of your department/office?
 - What barriers have you encountered in accessing city data? What data do you currently use in your work?
 - What problems can you solve with open data?
What questions can you answer?
- 



OPEN DATA IN MILWAUKEE

MILWAUKEE IS BECOMING A DATA DRIVEN CITY!

- Connected with the What Works Cities network – Bloomberg Philanthropies, The Center for Government Excellence at Johns Hopkins University, and Sunlight
- Goal: Strengthen open data practices and governance by codifying and standardizing processes and policies to inventory, prioritize and release data for internal and public consumption.
- Outcomes:
 - Establish governance team
 - Develop open data policy
 - Make data available to the public in a more useful, responsive way

PROGRESS SO FAR:

- Open Data Portal
- Open Data Policy
- Meet-ups and Hackathons


COMMITTEE RESPONSIBILITIES

Oversee implementation of open data program and policy, including:

- Identify open data coordinators for each department, who will manage that department's participation in the program
- Oversee the creation of citywide data inventory
- Develop and implement a process for determining the relative level of risk and public benefit associated datasets to be published



COMMITTEE RESPONSIBILITIES (CONT.)

- Develop a process for prioritizing the release of datasets (taking into account records request, strategic priorities, cost, and public interest)
 - Establish a process for publishing datasets onto an online, central location
 - Ensure datasets meet quality standards (up-to-date, proper formatting, no privacy/security concerns)
 - Oversee dataset publication
 - Participate in development of annual report toward goals for city open data
- 

NEXT STEPS

- Review Policy
- Complete data inventory process
- Clarify roles and responsibilities
- Establish process for prioritizing datasets for release

DISCUSSION POINT

- What projects would you like to create using city data?
- What datasets would you like to see that would support your work?
- What questions do you have about your role in open data as a member of the CIMC?

