

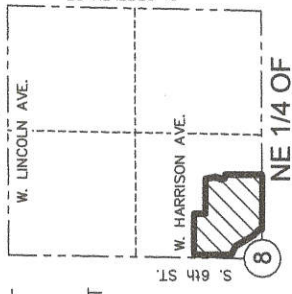


CERTIFIED SURVEY MAP NO.

Sheet 1 of 6

VICINITY MAP

1" = 2000'



BEING A REDIVISION OF ALL OF LOTS 1-14, ALL OF LOTS 29-41, PART OF LOTS 15-19, PART OF LOT 28, INCLUDING ALL OF THE VACATED NORTH-SOUTH ALLEY AND PART OF THE EAST-WEST ALLEY, ALL WITHIN PART OF BLOCK 3 OF CONTINUATION OF SOBIESKI PARK, ALSO ALL OF LOTS 1-23, ALL OF LOTS 26-46, PART OF LOTS 24-25, INCLUDING ALL OF THE VACATED NORTH-SOUTH ALLEY WITHIN BLOCK 4 OF CONTINUATION OF SOBIESKI PARK, ALSO INCLUDING PART OF VACATED SOUTH 5TH PLACE BETWEEN SAID BLOCKS 3 AND 4 OF CONTINUATION OF SOBIESKI PARK, ALSO ALL OF LOTS 11-19, PART OF LOT 20, AND VACATED SOUTH 4TH STREET ADJACENT TO BLOCK 3 OF CLIFFORD CHASE'S SUBDIVISION NO. 1, ALSO ALL OF LOTS 2-32, PART OF LOT 1, ALL OF THE VACATED NORTH-SOUTH AND EAST-WEST ALLEYS IN BLOCK 4 OF CLIFFORD CHASE'S SUBDIVISION NO. 1, EXTENDED WESTERLY TO THE WESTERLY LINE OF SAID SOUTH 5TH STREET, ALSO VACATED WEST KLONDIKE PLACE BETWEEN BLOCKS 3 AND 4 OF CLIFFORD CHASE'S SUBDIVISION NO. 1, ALSO VACATED SOUTH 5TH STREET BETWEEN THE SOUTH LINE OF THE EAST-WEST ALLEY IN BLOCK 3 OF CLIFFORD CHASE'S SUBDIVISION NO. 1 AND THE NORTH LINE OF VACATED WEST CLEVELAND AVENUE, ALSO THE WEST HALF OF VACATED SOUTH 4TH STREET ADJACENT TO THE EAST LINE OF BLOCK 4 OF CLIFFORD CHASE'S SUBDIVISION NO. 1, AND PART OF VACATED WEST CLEVELAND AVE. SAID STREETS VACATED PER CITY OF MILWAUKEE RESOLUTION NO 150183, ALL LANDS BEING THAT PART OF THE SOUTHWEST 1/4 OF THE NORTHEAST 1/4 OF SECTION 8, TOWNSHIP 6 NORTH, RANGE 22 EAST, CITY OF MILWAUKEE, MILWAUKEE COUNTY, WISCONSIN.

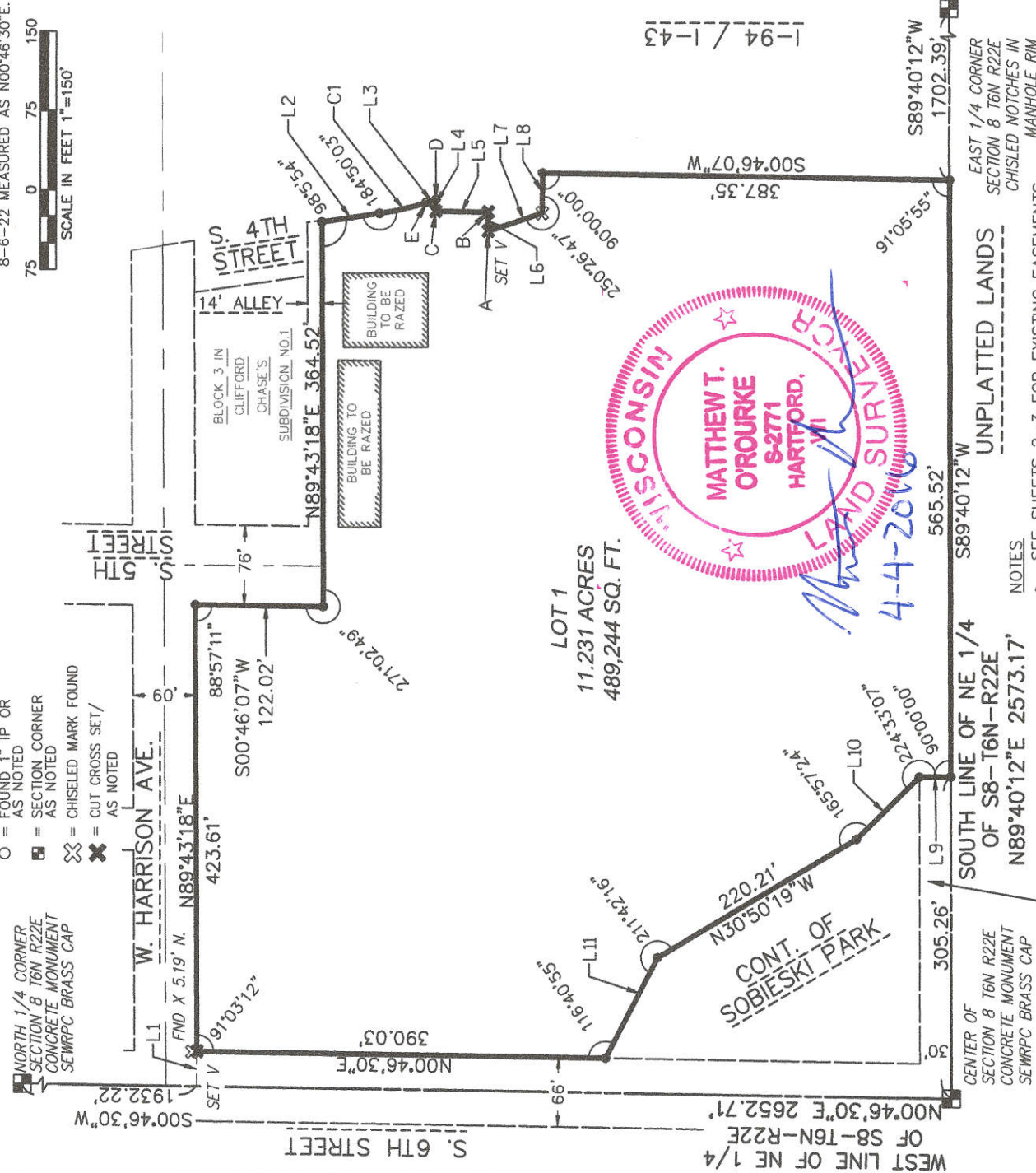
TAX KEYS:
498-0310-113
498-0807-112

LEGEND:

- = 1.315" O.D. X 24" LONG IRON PIPE SET, WEIGHING 1.68 LBS./FT.
- = FOUND T.I.P. OR AS NOTED
- = SECTION CORNER AS NOTED
- ⊗ = CHISELED MARK FOUND
- ✕ = CUT CROSS SET/AS NOTED

HORIZONTAL DATUM IS THE WISCONSIN COUNTY COORDINATE SYSTEM MILWAUKEE COUNTY ZONE NAD83 (2011). NORTH IS REFERENCED TO THE W. LINE OF THE NE 1/4 OF SECTION 8-6-22 MEASURED AS N00°46'30"E.

SCALE IN FEET 1"=150'



UNPLATTED LANDS
EAST 1/4 CORNER SECTION 8 T6N R22E CHISELED NOTCHES IN MANHOLE RIM

NOTES:
• SEE SHEETS 2-3 FOR EXISTING EASEMENTS.
• SEE SHEET 2 FOR LINE, CURVE, AND INT. ANG. TABLES

INFRASTRUCTURE - CLEVELAND AVE.

SERVICES DIVISION

CENTRAL DRAFTING & RECORDS-MANAGER

ENGR. IN CHARGE ENVIRON. ENGR.

CITY ENGINEER APPROVED

CORRECT

4/15/16

DEPARTMENT OF CITY DEVELOPMENT
CITY OF MILWAUKEE

MAR 10 2016
STAFF APPROVED



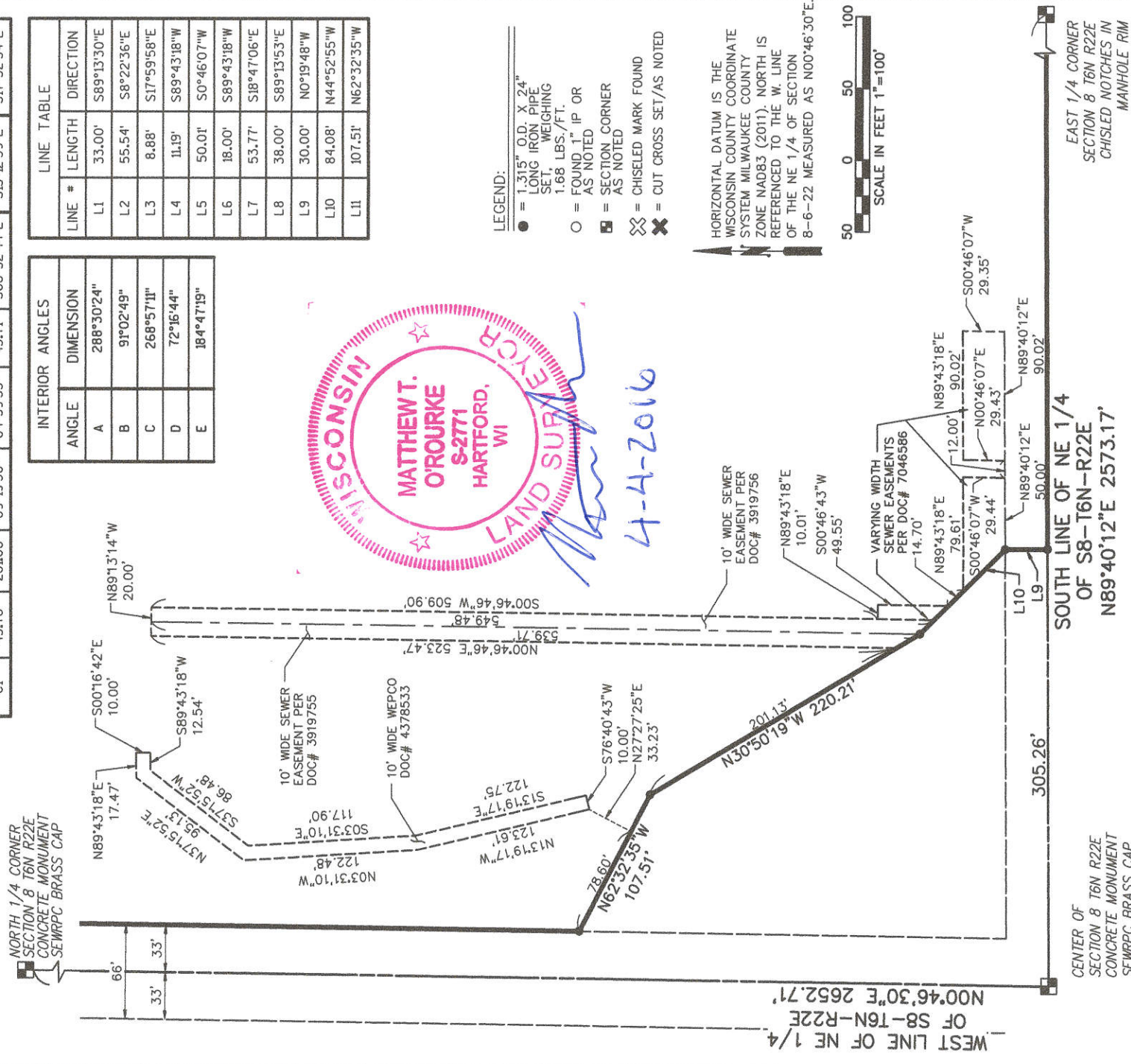
CERTIFIED SURVEY MAP NO.

BEING A REDIVISION OF ALL OF LOTS 1-14, ALL OF LOTS 29-41, PART OF LOTS 15-19, PART OF LOT 28, INCLUDING ALL OF THE VACATED NORTH-SOUTH ALLEY AND PART OF THE EAST-WEST ALLEY, ALL WITHIN PART OF BLOCK 3 OF CONTINUATION OF SOBIESKI PARK, ALSO ALL OF LOTS 1-23, ALL OF LOTS 26-46, PART OF LOTS 24-25, INCLUDING ALL OF THE VACATED NORTH-SOUTH ALLEY WITHIN BLOCK 4 OF CONTINUATION OF SOBIESKI PARK, ALSO INCLUDING PART OF VACATED SOUTH 5TH PLACE BETWEEN SAID BLOCKS 3 AND 4 OF CONTINUATION OF SOBIESKI PARK, ALSO ALL OF LOTS 11-19, PART OF LOT 20, AND VACATED SOUTH 4TH STREET ADJACENT TO BLOCK 3 OF CLIFFORD CHASE'S SUBDIVISION NO. 1, ALSO ALL OF LOTS 2-32, PART OF LOT 1, ALL OF THE VACATED NORTH-SOUTH AND EAST-WEST ALLEYS IN BLOCK 4 OF CLIFFORD CHASE'S SUBDIVISION NO. 1, EXTENDED WESTERLY TO THE WESTERLY LINE OF SAID SOUTH 5TH STREET, ALSO VACATED WEST KLONDIKE PLACE BETWEEN BLOCKS 3 AND 4 OF CLIFFORD CHASE'S SUBDIVISION NO. 1, ALSO VACATED SOUTH 5TH STREET BETWEEN THE SOUTH LINE OF THE EAST-WEST ALLEY IN BLOCK 3 OF CLIFFORD CHASE'S SUBDIVISION NO. 1 AND THE NORTH LINE OF VACATED WEST CLEVELAND AVENUE, ALSO THE WEST HALF OF VACATED SOUTH 4TH STREET ADJACENT TO THE EAST LINE OF BLOCK 4 OF CLIFFORD CHASE'S SUBDIVISION NO. 1, AND PART OF VACATED WEST CLEVELAND AVE. SAID STREETS VACATED PER CITY OF MILWAUKEE RESOLUTION NO 150183, ALL LANDS BEING THAT PART OF THE SOUTHWEST 1/4 OF THE NORTHEAST 1/4 OF SECTION 8, TOWNSHIP 6 NORTH, RANGE 22 EAST, CITY OF MILWAUKEE, MILWAUKEE COUNTY, WISCONSIN.

CURVE	LENGTH	RADIUS	DELTA	D/2	CHORD	TANGENT IN	CH BEARING	TANGENT OUT
C1	45.76'	281.00	09°19'50"	04°39'55"	45.71	S08°32'44"E	S13°12'39"E	S17°52'34"E

ANGLE	DIMENSION
A	288°30'24"
B	91°02'49"
C	268°57'11"
D	72°16'44"
E	184°47'19"

LINE #	LENGTH	DIRECTION
L1	33.00'	S89°13'30"E
L2	55.54'	S8°22'36"E
L3	8.88'	S17°59'58"E
L4	11.19'	S89°43'18"W
L5	50.01'	S0°46'07"W
L6	18.00'	S89°43'18"W
L7	53.77'	S18°47'06"E
L8	38.00'	S89°13'53"E
L9	30.00'	N0°19'48"W
L10	84.08'	N44°52'55"W
L11	107.51'	N62°32'35"W



- LEGEND:
- = 1.315" O.D. X 24" LONG IRON PIPE SET, WEIGHING 1.68 LBS./FT.
 - = FOUND 1" IP OR AS NOTED
 - = SECTION CORNER AS NOTED
 - ⊗ = CHISELED MARK FOUND
 - ✕ = CUT CROSS SET/AS NOTED

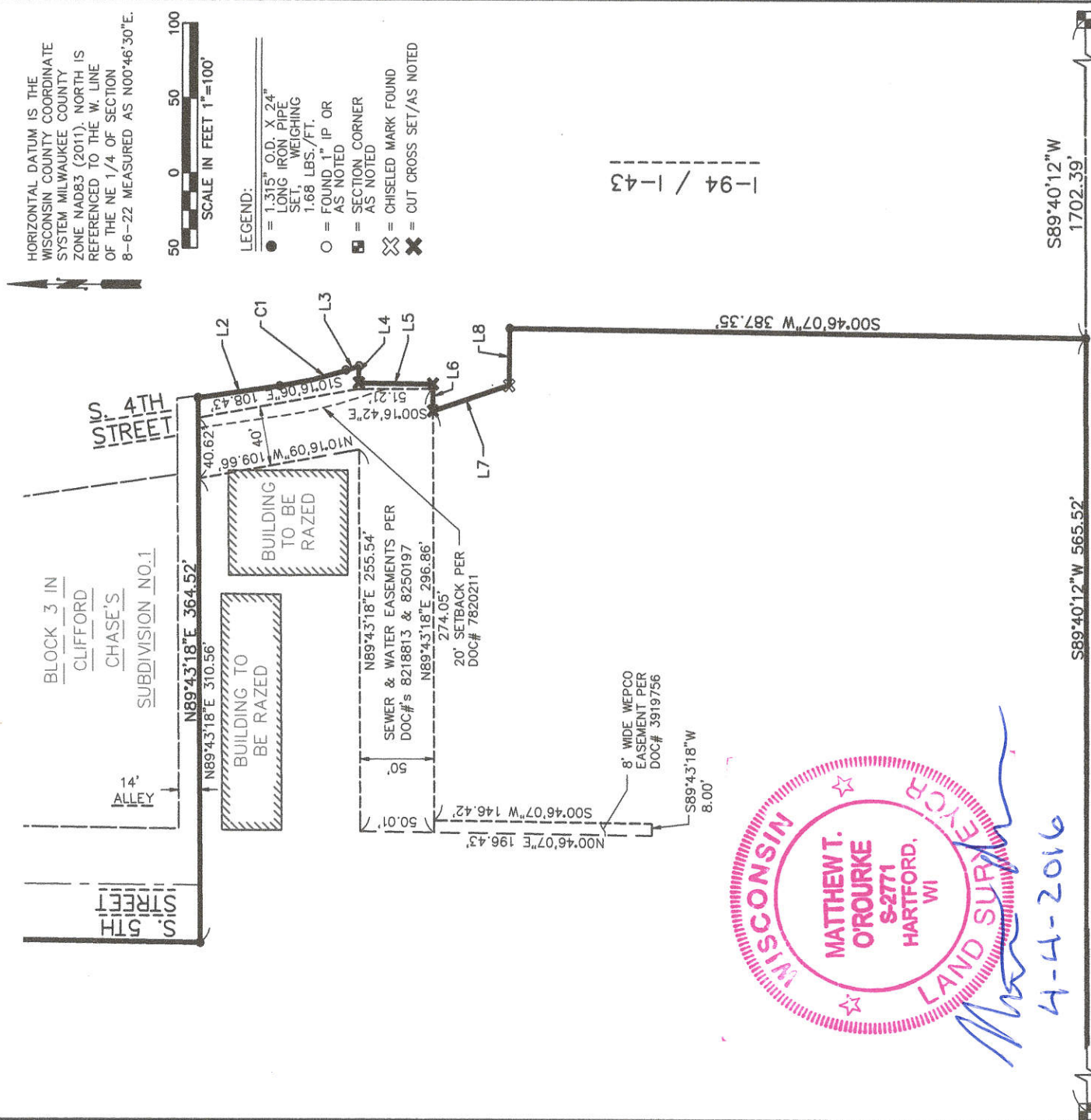
HORIZONTAL DATUM IS THE WISCONSIN COUNTY COORDINATE SYSTEM MILWAUKEE COUNTY ZONE NAD83 (2011). NORTH IS REFERENCED TO THE W. LINE OF THE NE 1/4 OF SECTION 8-6-22 MEASURED AS N00°46'30"E.

SCALE IN FEET 1"=100'



CERTIFIED SURVEY MAP NO.

BEING A REDIVISION OF ALL OF LOTS 1-14, ALL OF LOTS 29-41, PART OF LOTS 15-19, PART OF LOT 28, INCLUDING ALL OF THE VACATED NORTH-SOUTH ALLEY AND PART OF THE EAST-WEST ALLEY, ALL WITHIN PART OF BLOCK 3 OF CONTINUATION OF SOBIESKI PARK, ALSO ALL OF LOTS 1-23, ALL OF LOTS 26-46, PART OF LOTS 24-25, INCLUDING ALL OF THE VACATED NORTH-SOUTH ALLEY WITHIN BLOCK 4 OF CONTINUATION OF SOBIESKI PARK, ALSO INCLUDING PART OF VACATED SOUTH 5TH PLACE BETWEEN SAID BLOCKS 3 AND 4 OF CONTINUATION OF SOBIESKI PARK, ALSO ALL OF LOTS 11-19, PART OF LOT 20, AND VACATED SOUTH 4TH STREET ADJACENT TO BLOCK 3 OF CLIFFORD CHASE'S SUBDIVISION NO. 1, ALSO ALL OF LOTS 2-32, PART OF LOT 1, ALL OF THE VACATED NORTH-SOUTH AND EAST-WEST ALLEYS IN BLOCK 4 OF CLIFFORD CHASE'S SUBDIVISION NO. 1, EXTENDED WESTERLY TO THE WESTERLY LINE OF SAID SOUTH 5TH STREET, ALSO VACATED WEST KLONDIKE PLACE BETWEEN BLOCKS 3 AND 4 OF CLIFFORD CHASE'S SUBDIVISION NO. 1, ALSO VACATED SOUTH 5TH STREET BETWEEN THE SOUTH LINE OF THE EAST-WEST ALLEY IN BLOCK 3 OF CLIFFORD CHASE'S SUBDIVISION NO. 1 AND THE NORTH LINE OF VACATED WEST CLEVELAND AVENUE, ALSO THE WEST HALF OF VACATED SOUTH 4TH STREET ADJACENT TO THE EAST LINE OF BLOCK 4 OF CLIFFORD CHASE'S SUBDIVISION NO. 1, AND PART OF VACATED WEST CLEVELAND AVE. SAID STREETS VACATED PER CITY OF MILWAUKEE RESOLUTION NO. 150183, ALL LANDS BEING THAT PART OF THE SOUTHWEST 1/4 OF THE NORTHEAST 1/4 OF SECTION 8, TOWNSHIP 6 NORTH, RANGE 22 EAST, CITY OF MILWAUKEE, MILWAUKEE COUNTY, WISCONSIN.



4-4-2016

CENTER OF SECTION 8 T6N R22E CONCRETE MONUMENT SE WRPC BRASS CAP

SOUTH LINE OF NE 1/4 OF S8-T6N-R22E N89°40'12"E 2573.17'

S89°40'12"W 1702.39'

EAST 1/4 CORNER SECTION 8 T6N R22E CHISELED NOTCHES IN MANHOLE RIM

UNPLATTED LANDS

S00°46'07"W 387.35'

S89°43'18"E 310.56'

N89°43'18"E 364.52'

14' ALLEY

SOUTH 5TH STREET

SOUTH 4TH STREET

CLIFFORD CHASE'S SUBDIVISION NO.1

BUILDING TO BE RAZED

BUILDING TO BE RAZED

SEWER & WATER EASEMENTS PER DOC#s 8218813 & 8250197

N89°43'18"E 255.54'

N89°43'18"E 296.86'

274.05'

20' SETBACK PER DOC# 7820211

8' WIDE WPCO EASEMENT PER DOC# 3919756

50.01'

50.01'

500°46'07"W 146.42'

500°16'42"E

51.21'

40.62'

107°16'09"W 109.66'

107°16'06"E 108.43'

L1 L2 L3 L4 L5 L6 L7 L8

1-94 / 1-43



CERTIFIED SURVEY MAP NO.

Sheet 4 of 6

BEING A REDIVISION OF ALL OF LOTS 1-14, ALL OF LOTS 29-41, PART OF LOTS 15-19, PART OF LOT 28, INCLUDING ALL OF THE VACATED NORTH-SOUTH ALLEY AND PART OF THE EAST-WEST ALLEY, ALL WITHIN PART OF BLOCK 3 OF CONTINUATION OF SOBIESKI PARK, ALSO ALL OF LOTS 1-23, ALL OF LOTS 26-46, PART OF LOTS 24-25, INCLUDING ALL OF THE VACATED NORTH-SOUTH ALLEY WITHIN BLOCK 4 OF CONTINUATION OF SOBIESKI PARK, ALSO INCLUDING PART OF VACATED SOUTH 5TH PLACE BETWEEN SAID BLOCKS 3 AND 4 OF CONTINUATION OF SOBIESKI PARK, ALSO ALL OF LOTS 11-19, PART OF LOT 20, AND VACATED SOUTH 4TH STREET ADJACENT TO BLOCK 3 OF CLIFFORD CHASE'S SUBDIVISION NO. 1, ALSO ALL OF LOTS 2-32, PART OF LOT 1, ALL OF THE VACATED NORTH-SOUTH AND EAST-WEST ALLEYS IN BLOCK 4 OF CLIFFORD CHASE'S SUBDIVISION NO. 1, EXTENDED WESTERLY TO THE WESTERLY LINE OF SAID SOUTH 5TH STREET, ALSO VACATED WEST KLONDIKE PLACE BETWEEN BLOCKS 3 AND 4 OF CLIFFORD CHASE'S SUBDIVISION NO. 1, ALSO VACATED SOUTH 5TH STREET BETWEEN THE SOUTH LINE OF THE EAST-WEST ALLEY IN BLOCK 3 OF CLIFFORD CHASE'S SUBDIVISION NO. 1 AND THE NORTH LINE OF VACATED WEST CLEVELAND AVENUE, ALSO THE WEST HALF OF VACATED SOUTH 4TH STREET ADJACENT TO THE EAST LINE OF BLOCK 4 OF CLIFFORD CHASE'S SUBDIVISION NO. 1, AND PART OF VACATED WEST CLEVELAND AVE. SAID STREETS VACATED PER CITY OF MILWAUKEE RESOLUTION NO 150183, ALL LANDS BEING THAT PART OF THE SOUTHWEST 1/4 OF THE NORTHEAST 1/4 OF SECTION 8, TOWNSHIP 6 NORTH, RANGE 22 EAST, CITY OF MILWAUKEE, MILWAUKEE COUNTY, WISCONSIN.

SURVEYOR'S CERTIFICATE:

STATE OF WISCONSIN)
 COUNTY OF MILWAUKEE)SS

I, MATTHEW T. O'ROURKE, PROFESSIONAL LAND SURVEYOR S-2771, HEREBY CERTIFY THAT I HAVE SURVEYED, DIVIDED AND MAPPED A REDIVISION OF ALL OF LOTS 1-14, ALL OF LOTS 29-41, PART OF LOTS 15-19, PART OF LOT 28, INCLUDING ALL OF THE VACATED NORTH-SOUTH ALLEY AND PART OF THE EAST-WEST ALLEY, ALL WITHIN PART OF BLOCK 3 OF CONTINUATION OF SOBIESKI PARK, ALSO ALL OF LOTS 1-23, ALL OF LOTS 26-46, PART OF LOTS 24-25, INCLUDING ALL OF THE VACATED NORTH-SOUTH ALLEY WITHIN BLOCK 4 OF CONTINUATION OF SOBIESKI PARK, ALSO INCLUDING PART OF VACATED SOUTH 5TH PLACE BETWEEN SAID BLOCKS 3 AND 4 OF CONTINUATION OF SOBIESKI PARK, ALSO ALL OF LOTS 11-19, PART OF LOT 20, AND VACATED SOUTH 4TH STREET, ADJACENT TO BLOCK 3 OF CLIFFORD CHASE'S SUBDIVISION NO. 1, ALSO ALL OF LOTS 2-32, PART OF LOT 1, ALL OF THE VACATED NORTH-SOUTH AND EAST-WEST ALLEYS IN BLOCK 4 OF CLIFFORD CHASE'S SUBDIVISION NO. 1, EXTENDED WESTERLY TO THE WESTERLY LINE OF SAID SOUTH 5TH STREET, ALSO VACATED WEST KLONDIKE PLACE BETWEEN BLOCKS 3 AND 4 OF CLIFFORD CHASE'S SUBDIVISION NO. 1, ALSO VACATED SOUTH 5TH STREET BETWEEN THE SOUTH LINE OF THE EAST-WEST ALLEY IN BLOCK 3 OF CLIFFORD CHASE'S SUBDIVISION NO. 1 AND THE NORTH LINE OF VACATED WEST CLEVELAND AVENUE, ALSO THE WEST HALF OF VACATED SOUTH 4TH STREET ADJACENT TO THE EAST LINE OF BLOCK 4 OF CLIFFORD CHASE'S SUBDIVISION NO. 1, AND PART OF VACATED WEST CLEVELAND AVE. SAID STREETS VACATED PER CITY OF MILWAUKEE RESOLUTION NO 150183, ALL LANDS BEING THAT PART OF THE SOUTHWEST 1/4 OF THE NORTHEAST 1/4 OF SECTION 8, TOWNSHIP 6 NORTH, RANGE 22 EAST, CITY OF MILWAUKEE, MILWAUKEE COUNTY, WISCONSIN.

COMMENCING AT THE EAST QUARTER CORNER OF SAID SECTION 8; THENCE S89° 40' 12"W, COINCIDENT WITH THE SOUTH LINE OF SAID NORTHEAST 1/4, 1702.39 FEET TO A POINT ON THE C/L OF VACATED 4TH STREET AND THE POINT OF BEGINNING; THENCE CONTINUING, S89° 40' 12"W, COINCIDENT WITH SAID SOUTH LINE, 565.52 FEET; THENCE N0° 19' 48"W, 30.00 FEET TO THE NORTH LINE OF VACATED WEST CLEVELAND AVENUE; THENCE N44° 52' 55"W, 84.08 FEET TO A POINT ON THE CENTERLINE OF VACATED SOUTH 5TH PLACE; THENCE N30° 50' 19"W, 220.21 FEET, TO THE NORTHWEST CORNER OF LOT 15, BLOCK 3, CONTINUATION OF SOBIESKI PARK; THENCE N62° 32' 35"W, 107.51 FEET, TO THE SOUTHWEST CORNER OF LOT 29, BLOCK 3, CONTINUATION OF SOBIESKI PARK AND THE EAST RIGHT OF WAY LINE OF SOUTH 6TH STREET; THENCE N0° 46' 30"E, COINCIDENT WITH SAID EAST RIGHT OF WAY LINE, 390.03 FEET TO THE SOUTH RIGHT OF WAY LINE OF WEST HARRISON AVENUE; THENCE N89° 43' 18"E, COINCIDENT WITH SAID SOUTH RIGHT OF WAY LINE, 423.61 FEET TO THE WEST RIGHT OF WAY LINE OF SOUTH 5TH STREET; THENCE S0° 46' 07"W, COINCIDENT WITH SAID WEST RIGHT OF WAY LINE, 122.02 FEET TO A POINT BEING ON THE WESTERLY EXTENSION OF THE SOUTH RIGHT OF WAY LINE OF THE EAST-WEST ALLEY IN BLOCK 3 OF CLIFFORD CHASE'S SUBDIVISION NO. 1; THENCE, N89° 43' 18"E, COINCIDENT WITH THE EXTENSION OF AND WITH SAID SOUTH RIGHT OF WAY LINE OF SAID ALLEY, 364.52 FEET TO THE WEST RIGHT OF WAY OF INTERSTATE I-43; THENCE S8° 22' 36"E, COINCIDENT WITH SAID WEST RIGHT OF WAY, 55.54' TO A POINT OF CURVATURE; THENCE SOUTHEASTERLY, COINCIDENT WITH SAID WEST RIGHT OF WAY LINE, AND ALSO COINCIDENT WITH A NON-TANGENT CURVE TO THE LEFT, 45.76 FEET, SAID CURVE CONTAINING A RADIUS OF 281.00 FEET, A CENTRAL ANGLE OF 9° 19' 50", AND WHOSE CHORD BEARS S13° 12' 39"E, 45.71 FEET; THENCE S17° 59' 58"E, COINCIDENT WITH SAID WEST RIGHT OF WAY, 8.88 FEET TO THE EASTERLY EXTENSION OF THE SOUTH LINE OF BLOCK 3 OF CLIFFORD CHASE'S SUBDIVISION NO. 1; THENCE S89° 43' 18"W, COINCIDENT WITH SAID EASTERLY EXTENSION OF THE SOUTH LINE OF SAID BLOCK 3, 11.19' FEET TO THE SOUTHEAST CORNER OF LOT 20 OF SAID BLOCK 3 AND THE EAST LINE OF VACATED WEST KLONDIKE PLACE; THENCE S0° 46' 07"W, COINCIDENT WITH SAID EAST LINE OF VACATED WEST KLONDIKE PLACE, 50.01 FEET TO THE SOUTH LINE OF SAID VACATED WEST KLONDIKE PLACE; THENCE S89° 43' 18"W, COINCIDENT WITH SAID SOUTH LINE, 18.00 FEET; THENCE S18° 47' 06"E, COINCIDENT WITH THE WEST LINE OF INTERSTATE I-43 53.77 FEET TO THE WEST LINE OF VACATED SOUTH 4TH STREET; THENCE S89° 13' 53"E, 38.00' TO THE CENTERLINE OF VACATED SOUTH 4TH STREET; THENCE S0° 46' 07"W, COINCIDENT WITH SAID CENTERLINE AND ITS SOUTHERLY EXTENSION, 387.35' TO THE POINT OF BEGINNING.

SAID LANDS AS DESCRIBED CONTAINING 489,244 SQUARE FEET OR 11.231 ACRES MORE OR LESS.

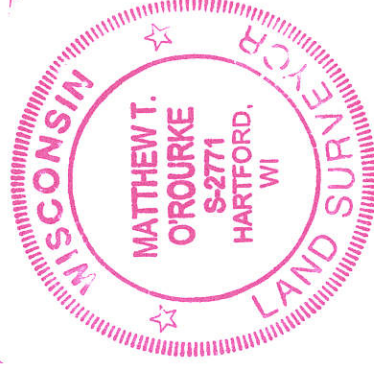
THAT I HAVE MADE THE SURVEY, LAND DIVISION, AND MAP BY THE DIRECTION OF AEE, LLC/SOU, OWNER OF SAID LAND, THAT THE MAP IS A CORRECT REPRESENTATION OF ALL THE EXTERIOR BOUNDARIES OF THE LAND SURVEYED AND THE LAND DIVISION THEREOF MADE, THAT I HAVE FULLY COMPLIED WITH S.236.34 OF THE WISCONSIN STATUTES AND CHAPTER 119 OF THE MILWAUKEE CODE OF ORDINANCES.

Matthew T. O'Rourke

4-4-2016

MATTHEW T. O'ROURKE S-2771

DATE





CERTIFIED SURVEY MAP NO. _____

BEING A REDIVISION OF ALL OF LOTS 1-14, ALL OF LOTS 29-41, PART OF LOTS 15-19, PART OF LOT 28, INCLUDING ALL OF THE VACATED NORTH-SOUTH ALLEY AND PART OF THE EAST-WEST ALLEY, ALL WITHIN PART OF BLOCK 3 OF CONTINUATION OF SOBIESKI PARK, ALSO ALL OF LOTS 1-23, ALL OF LOTS 26-46, PART OF LOTS 24-25, INCLUDING ALL OF THE VACATED NORTH-SOUTH ALLEY WITHIN BLOCK 4 OF CONTINUATION OF SOBIESKI PARK, ALSO INCLUDING PART OF VACATED SOUTH 5TH PLACE BETWEEN SAID BLOCKS 3 AND 4 OF CONTINUATION OF SOBIESKI PARK, ALSO ALL OF LOTS 11-19, PART OF LOT 20, AND VACATED SOUTH 4TH STREET ADJACENT TO BLOCK 3 OF CLIFFORD CHASE'S SUBDIVISION NO. 1, ALSO ALL OF LOTS 2-32, PART OF LOT 1, ALL OF THE VACATED NORTH-SOUTH AND EAST-WEST ALLEYS IN BLOCK 4 OF CLIFFORD CHASE'S SUBDIVISION NO. 1, EXTENDED WESTERLY TO THE WESTERLY LINE OF SAID SOUTH 5TH STREET, ALSO VACATED WEST KLONDIKE PLACE BETWEEN BLOCKS 3 AND 4 OF CLIFFORD CHASE'S SUBDIVISION NO. 1, ALSO VACATED SOUTH 5TH STREET BETWEEN THE SOUTH LINE OF THE EAST-WEST ALLEY IN BLOCK 3 OF CLIFFORD CHASE'S SUBDIVISION NO. 1 AND THE NORTH LINE OF VACATED WEST CLEVELAND AVENUE, ALSO THE WEST HALF OF VACATED SOUTH 4TH STREET ADJACENT TO THE EAST LINE OF BLOCK 4 OF CLIFFORD CHASE'S SUBDIVISION NO. 1, AND PART OF VACATED WEST CLEVELAND AVE. SAID STREETS VACATED PER CITY OF MILWAUKEE RESOLUTION NO 150183, ALL LANDS BEING THAT PART OF THE SOUTHWEST 1/4 OF THE NORTHEAST 1/4 OF SECTION 8, TOWNSHIP 6 NORTH, RANGE 22 EAST, CITY OF MILWAUKEE, MILWAUKEE COUNTY, WISCONSIN.

OWNER'S CERTIFICATE

AEE, LLC, A CORPORATION, DULY ORGANIZED AND EXISTING UNDER AND BY VIRTUE OF THE LAWS OF THE STATE OF WISCONSIN, AS OWNER, HEREBY CERTIFIES THAT SAID CORPORATION CAUSED THE LAND DESCRIBED ON THIS CERTIFIED SURVEY MAP, TO BE SURVEYED, DIVIDED, AND MAPPED AS REPRESENTED ON THIS CERTIFIED SURVEY MAP IN ACCORDANCE WITH THE REQUIREMENTS OF CHAPTER 119 OF THE MILWAUKEE CODE OF ORDINANCES.

MILWAUKEE COUNTY FURTHER CERTIFIES THAT THIS CERTIFIED SURVEY MAP IS REQUIRED BY S.236.10 OF THE WISCONSIN STATUTES TO BE SUBMITTED TO THE FOLLOWING FOR APPROVAL:
THE CITY OF MILWAUKEE

IN CONSIDERATION OF THE APPROVAL OF THE MAP BY THE COMMON COUNCIL AND IN ACCORDANCE WITH CHAPTER 119 OF THE CITY OF MILWAUKEE CODE OF ORDINANCES, THE UNDERSIGNED AGREES:

THAT ALL UTILITY LINES PROVIDING ELECTRIC POWER AND TELEPHONE SERVICES AND CABLE TELEVISION OR COMMUNICATIONS SYSTEMS LINES OR CABLES TO ALL LOTS IN THE CERTIFIED SURVEY MAP SHALL BE INSTALLED UNDERGROUND IN EASEMENTS PROVIDED THEREFORE, WHERE FEASIBLE.

IN WITNESS WHEREOF, AEE, LLC, HAS CAUSED THESE PRESENTS TO BE SIGNED BY MICHAEL M. GREBE, AT Waukesha, WISCONSIN AND ITS CORPORATE SEAL TO BE HEREUNTO AFFIXED ON THIS 5th DAY OF APRIL, 2016.



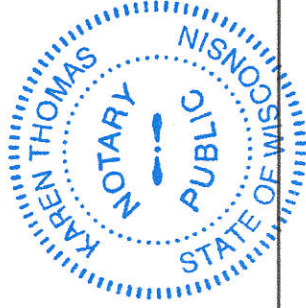
AEE, LLC

MICHAEL M. GREBE, SECRETARY

STATE OF WISCONSIN) SS
COUNTY OF MILWAUKEE)

PERSONALLY CAME BEFORE ME THIS 5th DAY OF APRIL, 2016, THE ABOVE-NAMED MICHAEL M. GREBE OF THE ABOVE NAMED AEE, LLC, TO ME KNOWN TO BE THE PERSON WHO EXECUTED THE FOREGOING INSTRUMENT, AND TO ME KNOWN TO BE SUCH SECRETARY OF SAID CORPORATION AND ACKNOWLEDGED THAT HE/SHE EXECUTED THE FOREGOING INSTRUMENT AS SUCH OFFICER AS THE DEED OF SAID CORPORATION, BY ITS AUTHORITY.

MY COMMISSION EXPIRES 3/16/19





CERTIFIED SURVEY MAP NO.

BEING A REDIVISION OF ALL OF LOTS 1-14, ALL OF LOTS 29-41, PART OF LOTS 15-19, PART OF LOT 28, INCLUDING ALL OF THE VACATED NORTH-SOUTH ALLEY AND PART OF THE EAST-WEST ALLEY, ALL WITHIN PART OF BLOCK 3 OF CONTINUATION OF SOBIESKI PARK, ALSO ALL OF LOTS 1-23, ALL OF LOTS 26-46, PART OF LOTS 24-25, INCLUDING ALL OF THE VACATED NORTH-SOUTH ALLEY WITHIN BLOCK 4 OF CONTINUATION OF SOBIESKI PARK, ALSO INCLUDING PART OF VACATED SOUTH 5TH PLACE BETWEEN SAID BLOCKS 3 AND 4 OF CONTINUATION OF SOBIESKI PARK, ALSO ALL OF LOTS 11-19, PART OF LOT 20, AND VACATED SOUTH 4TH STREET ADJACENT TO BLOCK 3 OF CLIFFORD CHASE'S SUBDIVISION NO. 1, ALSO ALL OF LOTS 2-32, PART OF LOT 1, ALL OF THE VACATED NORTH-SOUTH AND EAST-WEST ALLEYS IN BLOCK 4 OF CLIFFORD CHASE'S SUBDIVISION NO. 1, EXTENDED WESTERLY TO THE WESTERLY LINE OF SAID SOUTH 5TH STREET, ALSO VACATED WEST KLONDIKE PLACE BETWEEN BLOCKS 3 AND 4 OF CLIFFORD CHASE'S SUBDIVISION NO. 1, ALSO VACATED SOUTH 5TH STREET BETWEEN THE SOUTH LINE OF THE EAST-WEST ALLEY IN BLOCK 3 OF CLIFFORD CHASE'S SUBDIVISION NO. 1 AND THE NORTH LINE OF VACATED WEST CLEVELAND AVENUE, ALSO THE WEST HALF OF VACATED SOUTH 4TH STREET ADJACENT TO THE EAST LINE OF BLOCK 4 OF CLIFFORD CHASE'S SUBDIVISION NO. 1, AND PART OF VACATED WEST CLEVELAND AVE. SAID STREETS VACATED PER CITY OF MILWAUKEE RESOLUTION NO 150183, ALL LANDS BEING THAT PART OF THE SOUTHWEST 1/4 OF THE NORTHEAST 1/4 OF SECTION 8, TOWNSHIP 6 NORTH, RANGE 22 EAST, CITY OF MILWAUKEE, MILWAUKEE COUNTY, WISCONSIN.

CERTIFICATE OF CITY OF TREASURER

STATE OF WISCONSIN)
MILWAUKEE COUNTY)

I, SPENCER COGGS, BEING THE DULY ELECTED, QUALIFIED, AND ACTING TREASURER OF THE CITY OF MILWAUKEE, DO HEREBY CERTIFY THAT IN ACCORDANCE WITH THE RECORDS IN THE OFFICE OF THE CITY TREASURER OF THE CITY OF MILWAUKEE, THERE ARE NO UNPAID TAXES OR UNPAID SPECIAL ASSESSMENTS ON THE LAND INCLUDED IN THIS CERTIFIED SURVEY MAP.

James F. Kaybar, DEPUTY

for SPENCER COGGS
CITY OF MILWAUKEE TREASURER

04/19/2016

DATE

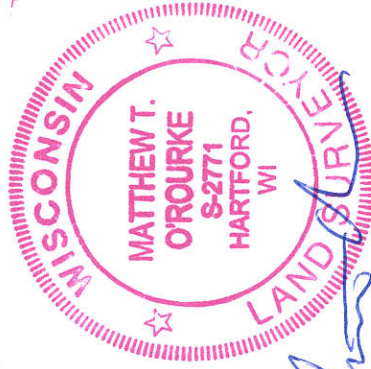
CITY OF MILWAUKEE COMMON COUNCIL CERTIFICATE OF APPROVAL

I HEREBY CERTIFY THAT THIS CERTIFIED SURVEY MAP WAS APPROVED UNDER RESOLUTION FILE NO. 160019.

ADOPTED BY THE COMMON COUNCIL OF THE CITY OF MILWAUKEE ON May 24, 2016.

[Signature]
JAMES R. OWCZARSKI, CLERK, CITY OF MILWAUKEE

[Signature]
TOM BARRETT, MAYOR, CITY OF MILWAUKEE



[Signature]
4-4-2016