
2016 Overview: Port of Milwaukee

Finance & Personnel Committee
October 16, 2015

Community Goals and Objectives

Increasing investment and economic vitality throughout the city.

- Provide land for businesses.
- Stimulate trade and business.

Community Goals and Objectives

Measure	2013 Actual	2014 Projected	2014 Planned
Percentage of total expenses covered by revenues.	132%	100%	100%
Port related job growth.	624 (direct jobs) 792 (indirect)	624 (direct jobs) 792 (indirect)	624 (direct jobs) 792 (indirect)

Budget Data

	2013 ADOPTED BUDGET	2014 PROPOSED BUDGET	DIFFERENCE (amount, %)
FTEs – O&M	20	20	(0%)
FTEs - Other			
Salaries & Wages	\$1,213,689	\$1,228,156	+\$14,467 (+1.2%)
Fringe Benefits	546,160	589,515	+\$43,355(+7.9%)
Operating Expenditures	923,000	933,000	+\$10,000 (+1.1%)
Special Funds	2,130,000	2,051,000	-\$79,000(-3.7%)
TOTAL	\$4,812,849	\$4,801,671	-\$11,178 (-.02%)

Budget Changes

■ Summary

- Overall budget decreased by .02%
 - Salaries increased by 1.2%
 - Operating Expenditures decreased by 1.1%
 - Special Funds decreased by 3.7%

Port Updates

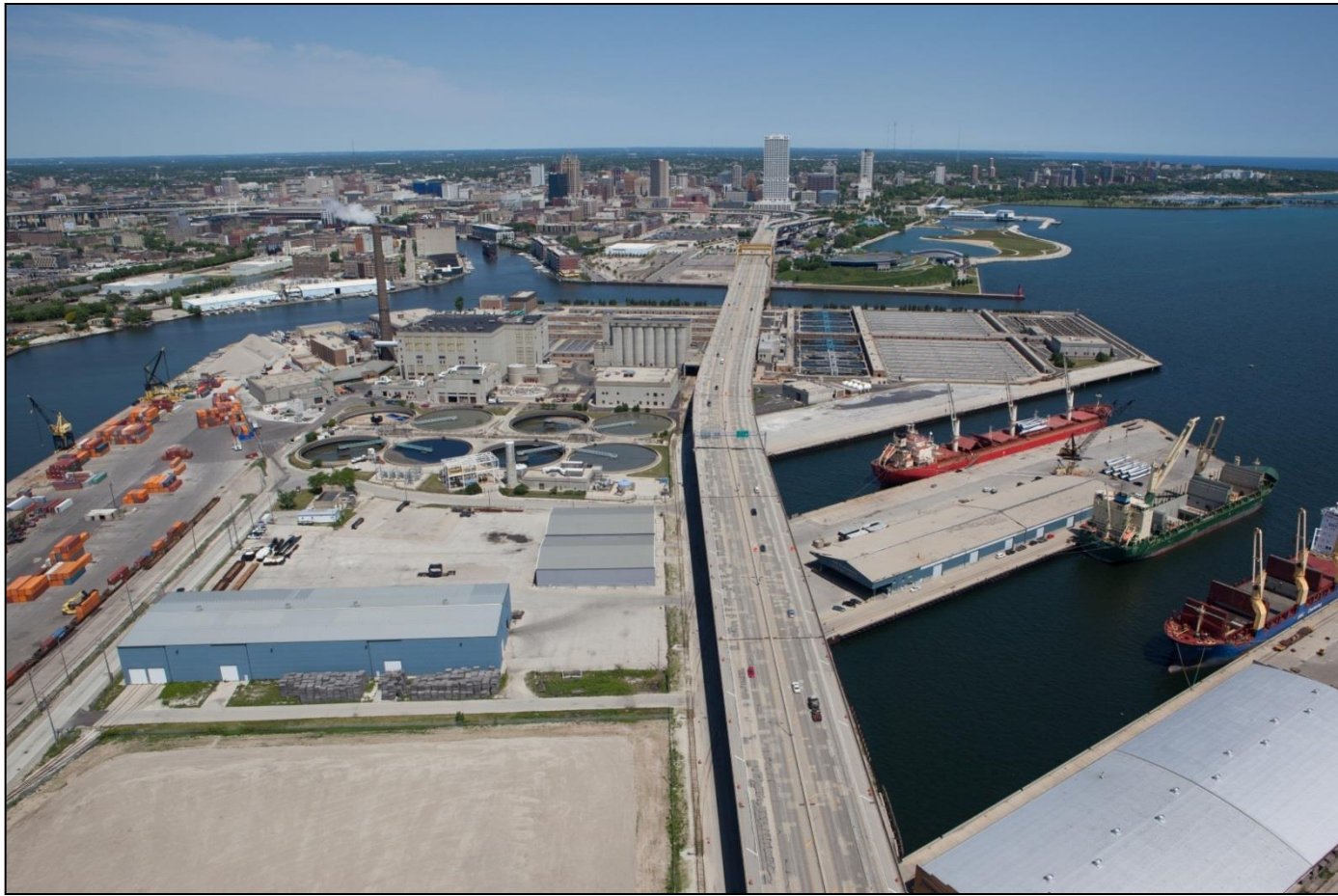
- Facility Maintenance and Upgrade
 - \$2.1 million included for ongoing maintenance and improvement of Port facilities
 - \$4 million RACM financing for crane replacement
 - Port revenues will be used for loan repayment
 - \$400,000 included for capital improvements
 - Allocated for rail track improvement
 - 4th year of 5 year rail track upgrade program

Port Updates

■ Revenues

- Annual Port revenues exceed expenditures by approximately \$1 million
 - Transferred to general city revenue
 - Will be used to support RACM financing

Port of Milwaukee 2016 Budget



FTZ No. 41 -2014



FTZ #41 – 2014 BY THE NUMBERS

In 2014, Generac completed the activation process and became an active operator in Foreign Trade Zone #41. Generac is headquartered in Waukesha, WI and joins Mercury Marine and CNH as major Wisconsin manufacturers using Foreign Trade Zone #41 to help remain competitive in the global marketplace. With Generac's FTZ activation in 2014, Foreign Trade Zone #41 saw an increase of people working in the Zone of over 600 people over 2013.

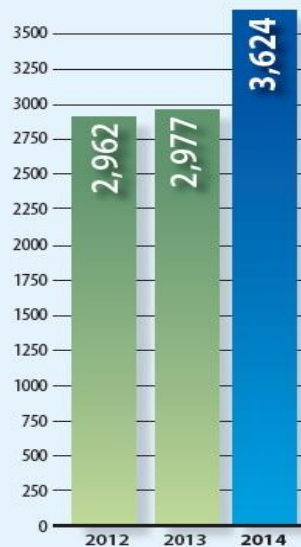
In addition to an increase in employment in the Zone, 2014 also saw an increase in merchandise brought through FTZ #41 by its operators. 2013 was the first year that FTZ exceeded the \$1 Billion threshold for total value of merchandise brought through the Zone, and in 2014 the total value was increased by over \$100 million.

2014 STATISTICS

Activated Zones: 5
Approved Zones: 7
Percent exported: 15%
Activated Acreage: 273.55



EMPLOYEES IN ZONE FTZ #41



MERCHANDISE VALUE BROUGHT THROUGH FTZ #41 \$



BENTLEY
WORLDWIDE PACKAGING LTD.

BORGAN
NuTone

CNH

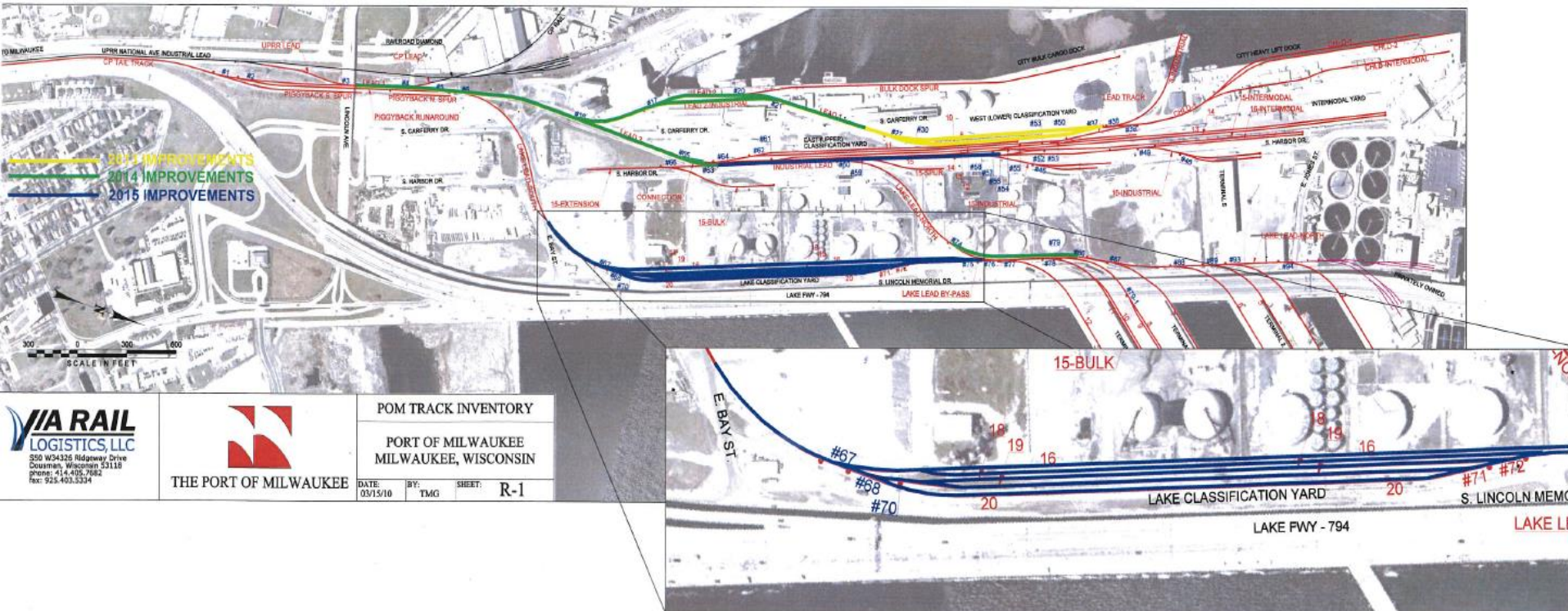
Hospira

GENERAC

MERCURY

SIGMA-ALDRICH

RAIL IMPROVEMENTS



LIQUID CARGO PIER



Oversize High Wide Move



Hamburg Visit 2015



Before- Storage Domes



After- Storage Domes



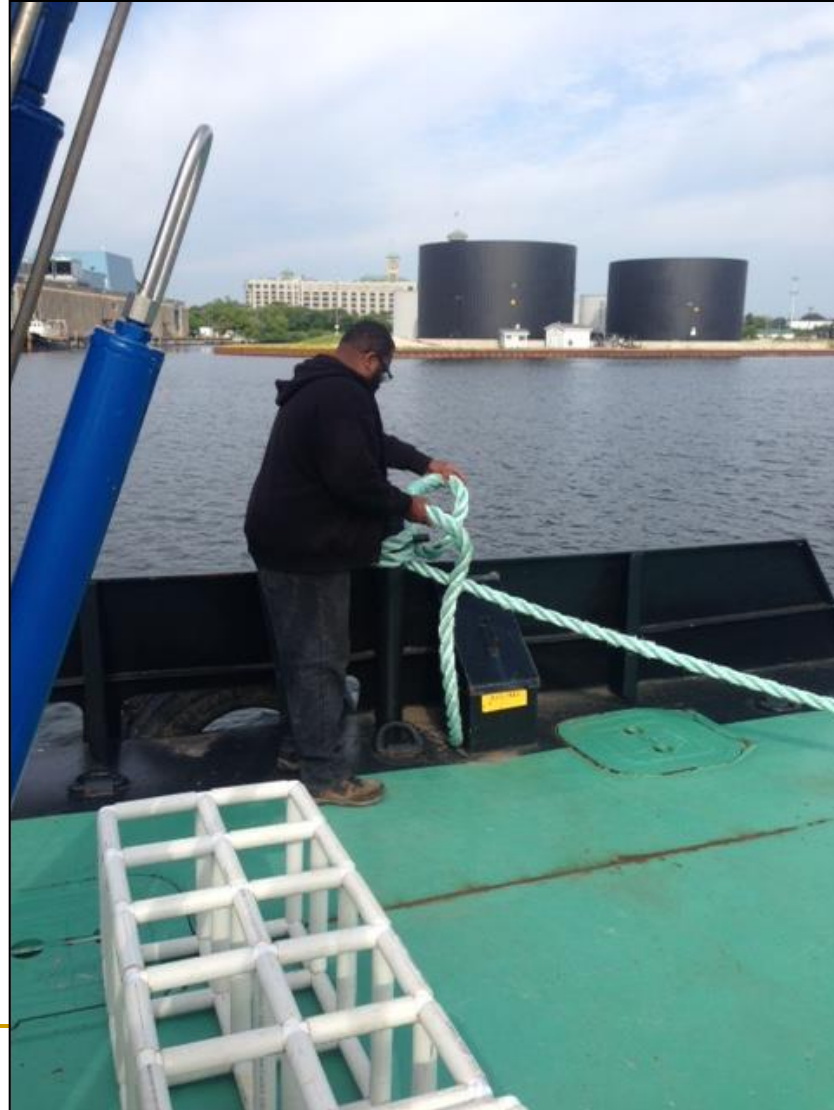
Liquid Cargo Tanks



2015 Summer Youth Interns



2015 Compete Milwaukee



Common Council Harbor Tour



Thank You

